

Lighting calculation

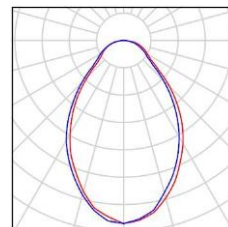
Table of contents

Lighting calculation	
Project Cover	1
Table of contents	2
Luminaire parts list	3
AF88XH252BSBL Formed aluminum housing, clear glass lens	
Luminaire Data Sheet	4
Tennis+Basketball Court	
Planning data	5
Sport Luminaires (Coordinates List)	6
3D Rendering	8
False Color Rendering	9
Exterior Surfaces	
Total court area	
Isolines (E, Perpendicular)	10
Value Chart (E, Perpendicular)	11
Light Trespass area	
Isolines (E, Perpendicular)	12
Value Chart (E, Perpendicular)	13
Court	
Summary	14
Value Chart (E, Perpendicular)	15
Court + 10 ft above	
Summary	16
Value Chart (E, Perpendicular)	17

Lighting calculation / Luminaire parts list

8 Pieces AF88XH252BSBL Formed aluminum housing, clear glass lens
Article No.: AF88XH252BSBL
Luminous flux (Luminaire): 53022 lm
Luminous flux (Lamps): 53022 lm
Luminaire Wattage: 378.0 W
Luminaire classification according to CIE: 100
CIE flux code: 64 86 97 100 100
Fitting: 1 x 252 LEDs. LUMINAIRE OUTPUT: 36917 Lms. (Correction Factor 1.000).

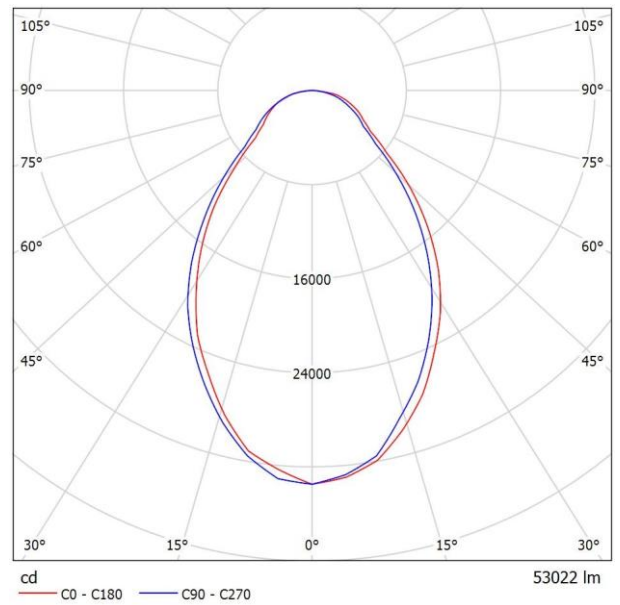
See our luminaire catalog for an image of the luminaire.



AF88XH252BSBL Formed aluminum housing, clear glass lens / Luminaire Data Sheet

See our luminaire catalog for an image of the luminaire.

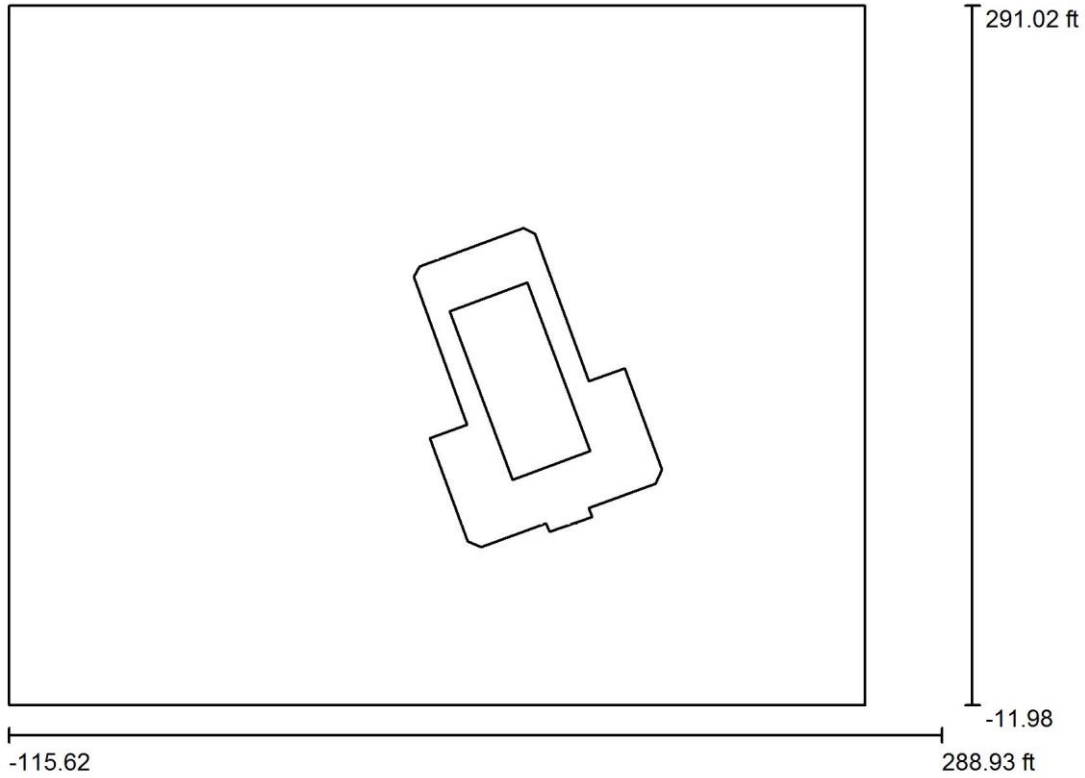
Luminous emittance 1:



Luminaire classification according to CIE: 100
CIE flux code: 64 86 97 100 100

Due to missing symmetry properties, no UGR table can be displayed for this luminaire.

Tennis+Basketball Court / Planning data



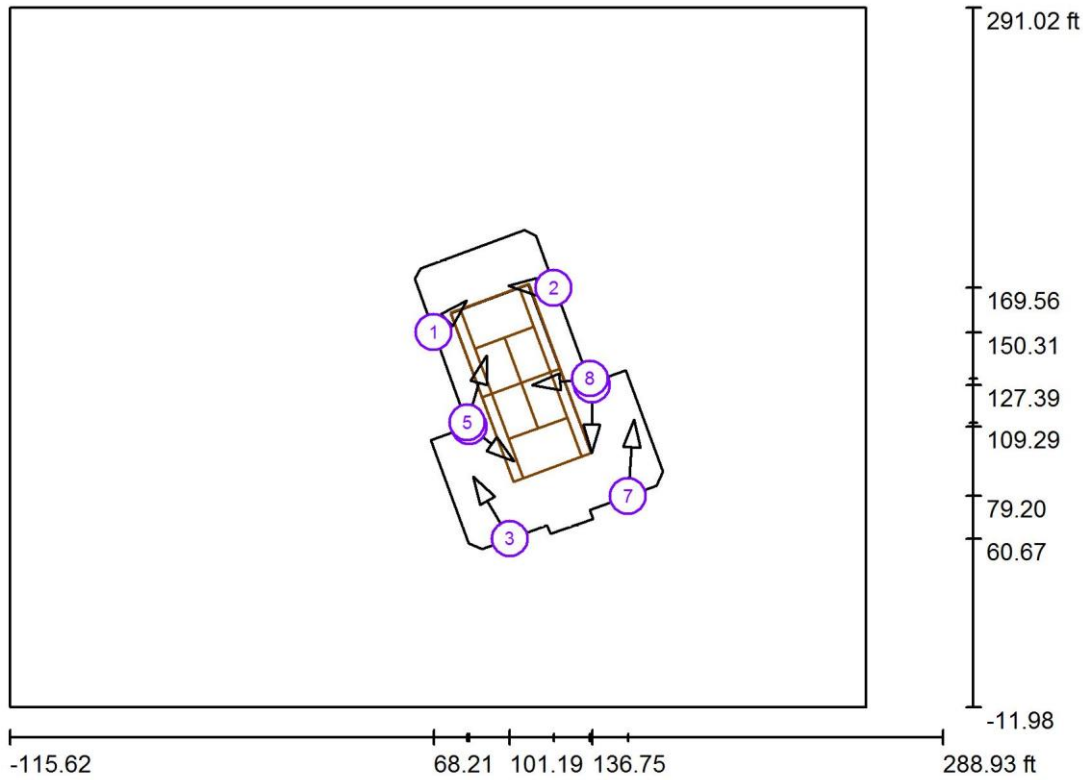
Maintenance factor: 0.80, ULR (Upward Light Ratio): 9.0%

Scale 1:1000

Luminaire Parts List

No.	Pieces	Designation (Correction Factor)	Φ (Luminaire) [lm]	Φ (Lamps) [lm]	P [W]
1	8	AF88XH252BSBL Formed aluminum housing, clear glass lens (1.000)	53022	53022	378.0
Total:			424175	Total: 424175	3024.0

Tennis+Basketball Court / Sport Luminaires (Coordinates List)



Scale 1 : 1000

List of the Sport Luminaires

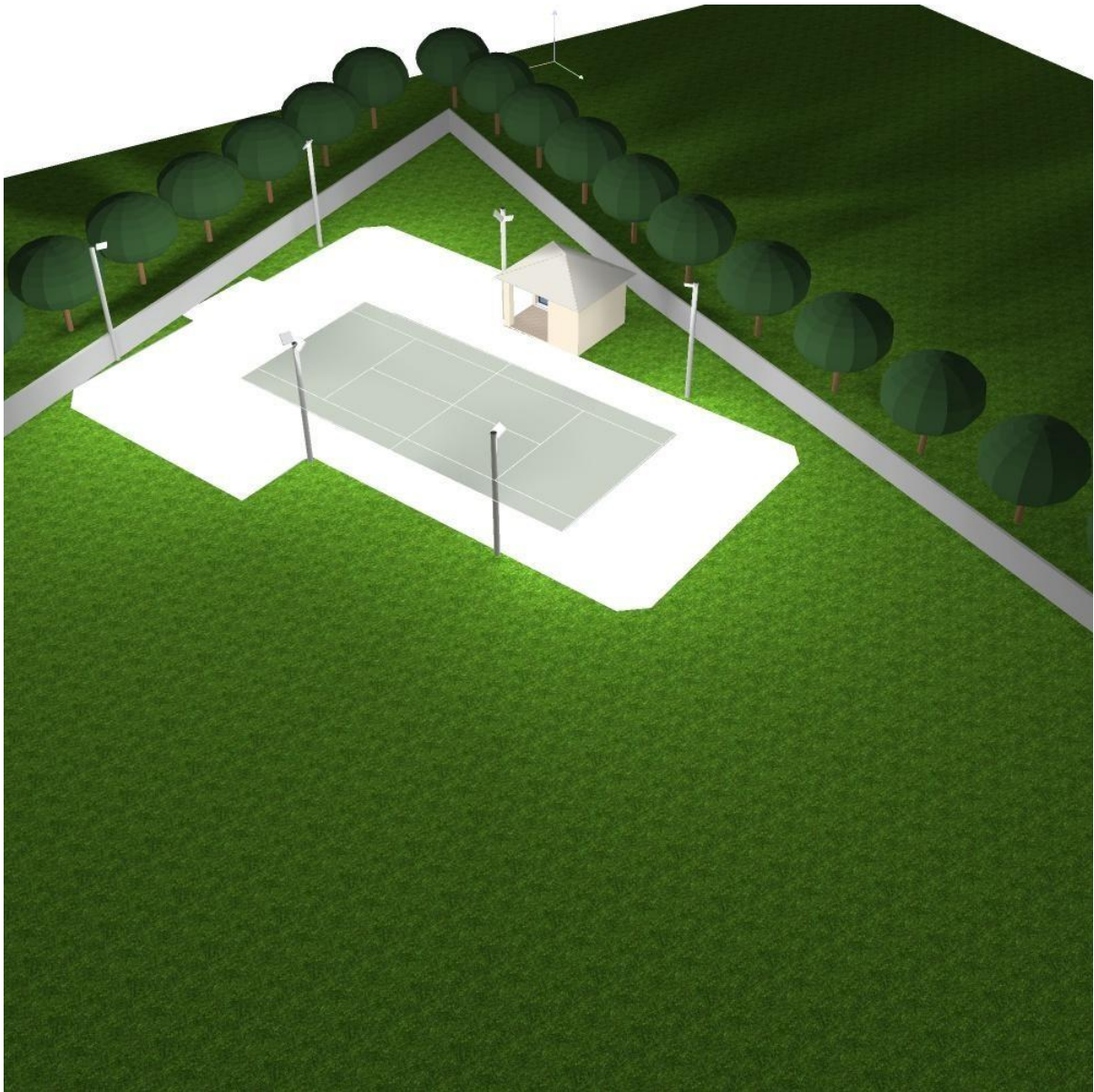
Luminaire	Index	Position [ft]			Aiming Point [ft]			Angle [°]	Alignment	Pole
		X	Y	Z	X	Y	Z			
AF88XH252BSBL Formed aluminum housing, clear glass lens	1	68.214	150.313	25.000	82.535	163.955	0.000	51.7	(C 90, G IMax)	/
AF88XH252BSBL Formed aluminum housing, clear glass lens	2	120.172	169.555	25.000	100.420	170.578	0.000	51.7	(C 90, G IMax)	/
AF88XH252BSBL Formed aluminum housing, clear glass lens	3	101.187	60.667	25.000	85.235	87.689	0.000	38.5	(C 90, G IMax)	/
AF88XH252BSBL Formed aluminum housing, clear glass lens	4	83.611	109.295	25.000	103.007	94.421	0.000	45.6	(C 90, G IMax)	/

Tennis+Basketball Court / Sport Luminaires (Coordinates List)

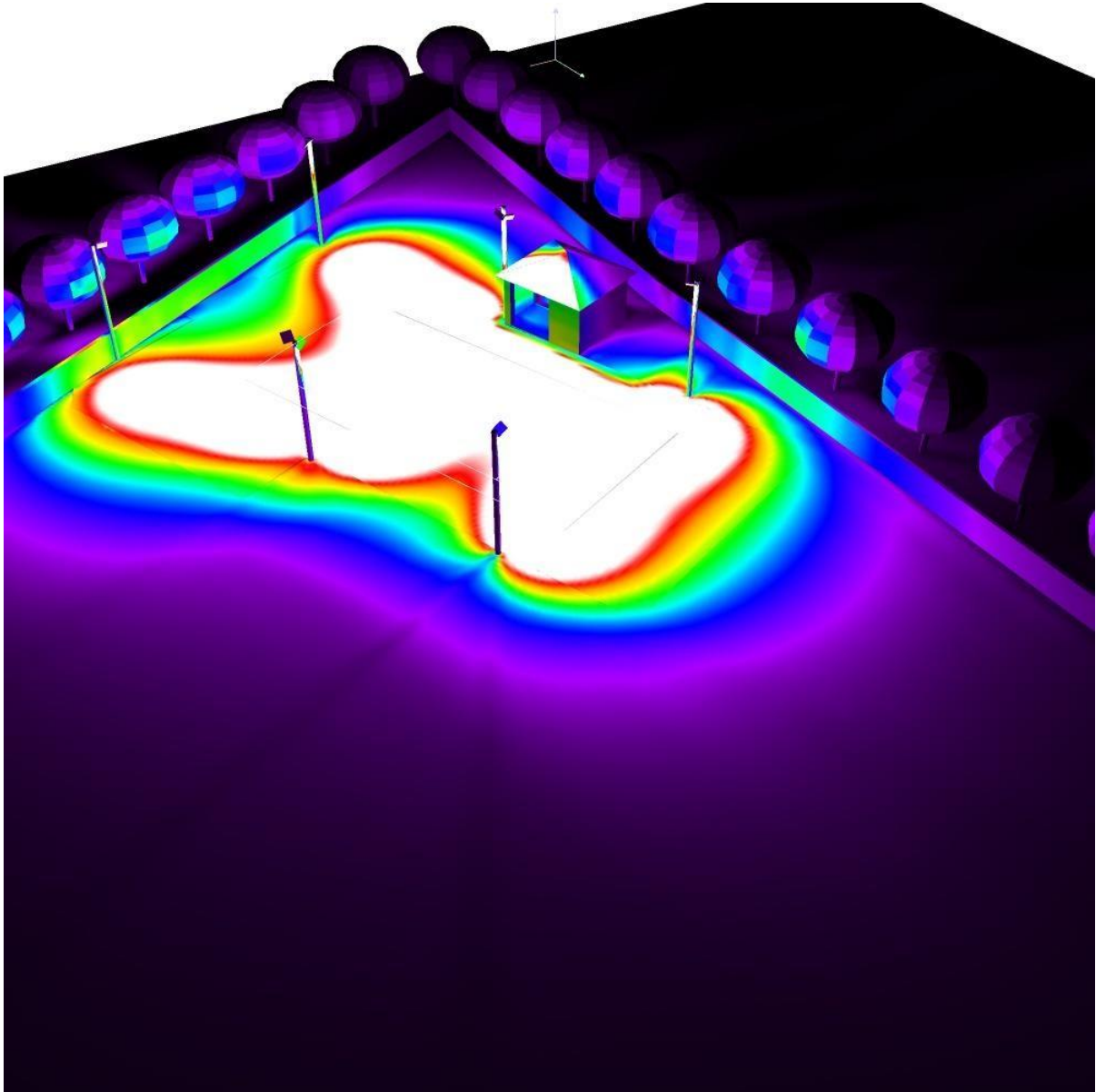
List of the Sport Luminaires

Luminaire	Index	Position [ft]			Aiming Point [ft]			Angle [°]	Alignment	Pole
		X	Y	Z	X	Y	Z			
AF88XH252BSBL Formed aluminum housing, clear glass lens	5	82.688	111.125	25.000	91.019	140.103	0.000	39.7	(C 90, G IMax)	/
AF88XH252BSBL Formed aluminum housing, clear glass lens	6	136.750	127.386	25.000	136.563	98.102	0.000	40.5	(C 90, G IMax)	/
AF88XH252BSBL Formed aluminum housing, clear glass lens	7	152.379	79.203	25.000	154.873	112.482	0.000	36.8	(C 90, G IMax)	/
AF88XH252BSBL Formed aluminum housing, clear glass lens	8	135.845	130.185	25.000	110.872	127.441	0.000	44.9	(C 90, G IMax)	/

Tennis+Basketball Court / 3D Rendering

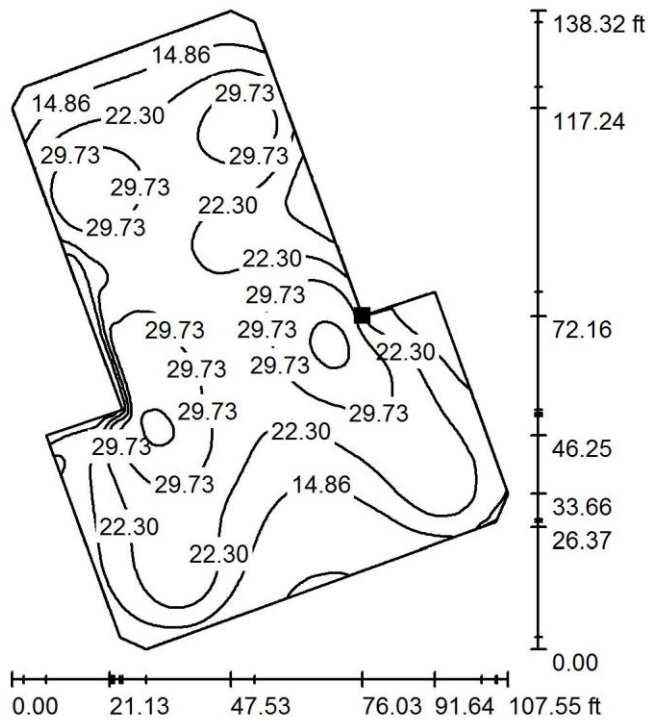


Tennis+Basketball Court / False Color Rendering



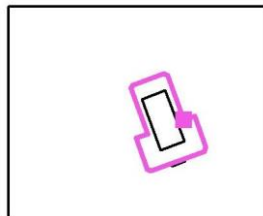
0 2.50 5.00 7.50 10.00 12.50 15.00 17.50 20.00 fc

Tennis+Basketball Court / Total court area / Isolines (E, Perpendicular)



Values in Footcandles, Scale 1 : 500

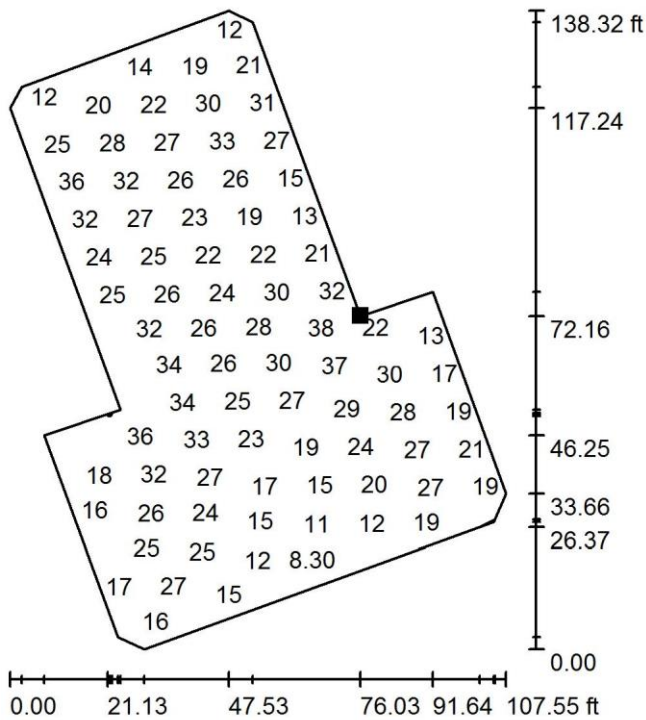
Position of surface in external scene:
 Marked point:
 (135.845 ft, 128.414 ft, 0.000 ft)



Grid: 128 x 128 Points

E_{av} [fc]	E_{min} [fc]	E_{max} [fc]	u0	E_{min} / E_{max}
23	5.12	40	0.223	0.130

Tennis+Basketball Court / Total court area / Value Chart (E, Perpendicular)



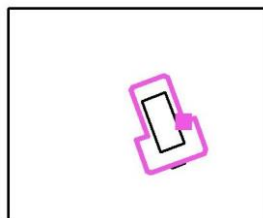
Values in Footcandles, Scale 1 : 500

Not all calculated values could be displayed.

Position of surface in external scene:

Marked point:

(135.845 ft, 128.414 ft, 0.000 ft)



Grid: 128 x 128 Points

E_{av} [fc]
23

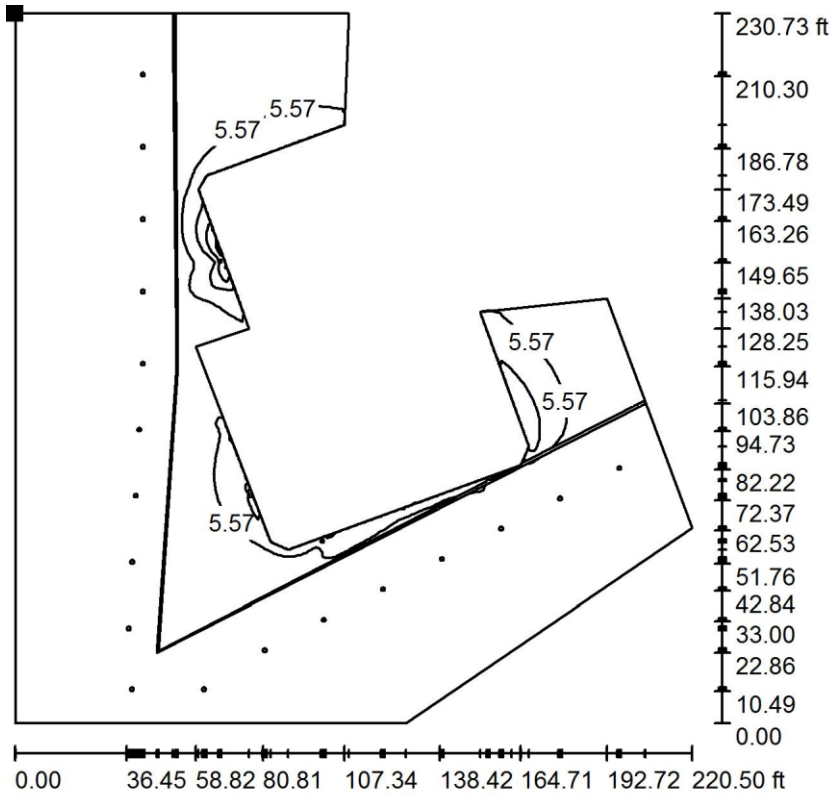
E_{min} [fc]
5.12

E_{max} [fc]
40

u_0
0.223

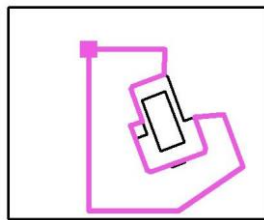
E_{min} / E_{max}
0.130

Tennis+Basketball Court / Light Trespass area / Isolines (E, Perpendicular)



Values in Footcandles, Scale 1 : 750

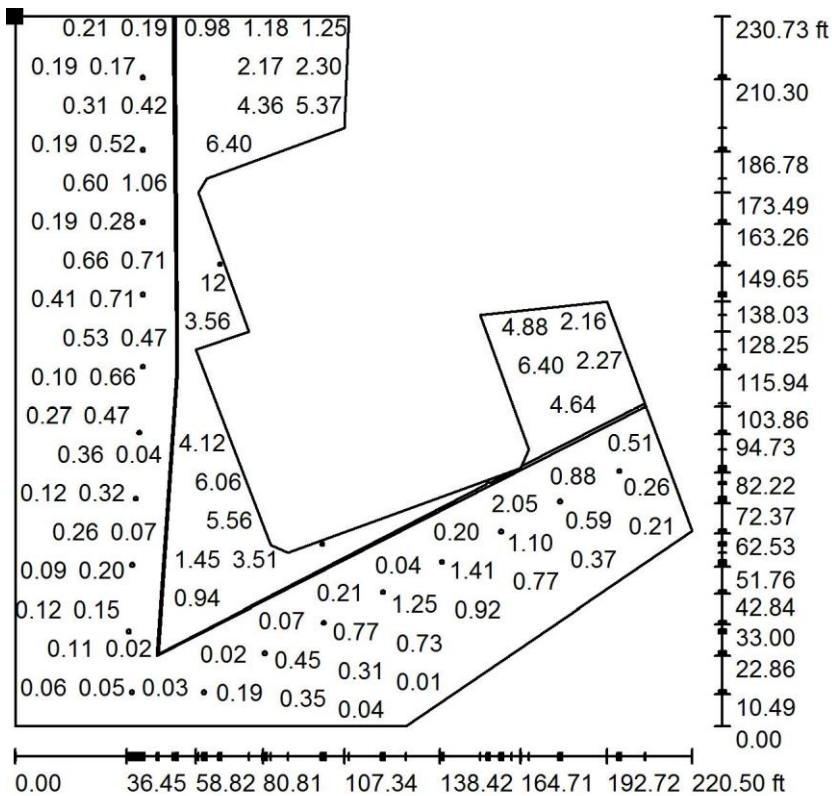
Position of surface in external scene:
 Marked point:
 (0.222 ft, 230.729 ft, 0.000 ft)



Grid: 128 x 128 Points

E_{av} [fc]	E_{min} [fc]	E_{max} [fc]	u0	E_{min} / E_{max}
1.48	0.00	26	0.002	0.000

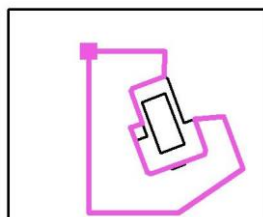
Tennis+Basketball Court / Light Trespass area / Value Chart (E, Perpendicular)



Values in Footcandles, Scale 1 : 750

Not all calculated values could be displayed.

Position of surface in external scene:
 Marked point:
 (0.222 ft, 230.729 ft, 0.000 ft)



Grid: 128 x 128 Points

E_{av} [fc]
1.48

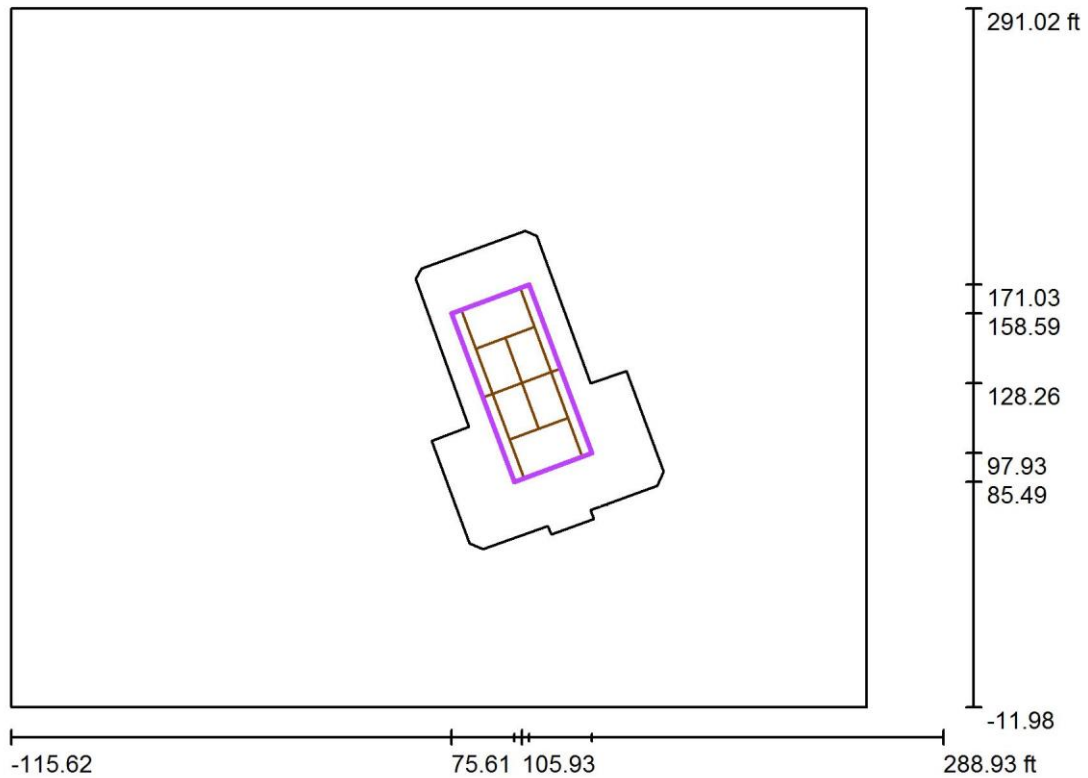
E_{min} [fc]
0.00

E_{max} [fc]
26

u0
0.002

E_{min} / E_{max}
0.000

Tennis+Basketball Court / Court / Summary



Scale 1 : 1000

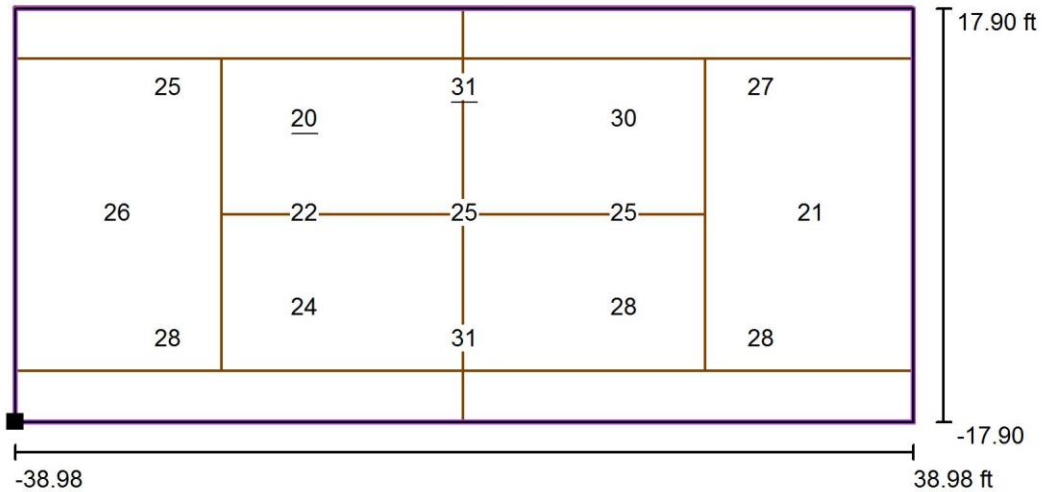
Position: (105.934 ft, 128.261 ft, 0.000 ft)
 Size: (77.955 ft, 35.808 ft)
 Rotation: (0.0°, 0.0°, -69.7°)
 Type: User defined, Quantity Points: 15
 Belongs to the following sport arena: Tennis 1

Results overview

No.	Type	E_{av} [fc]	E_{min} [fc]	E_{max} [fc]	u0	E_{min}/E_{max}	$E_{h,m}/E_m$	H [ft]	Camera
1	perpendicular	26	20	31	0.77	0.63	/	0.000	/

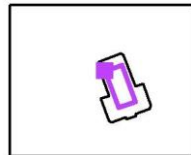
$E_{h,m}/E_m$ = Relationship between middle horizontal and vertical illuminance, H = Measuring Height

Tennis+Basketball Court / Court / Value Chart (E, Perpendicular)



Values in Footcandles, Scale 1 : 200

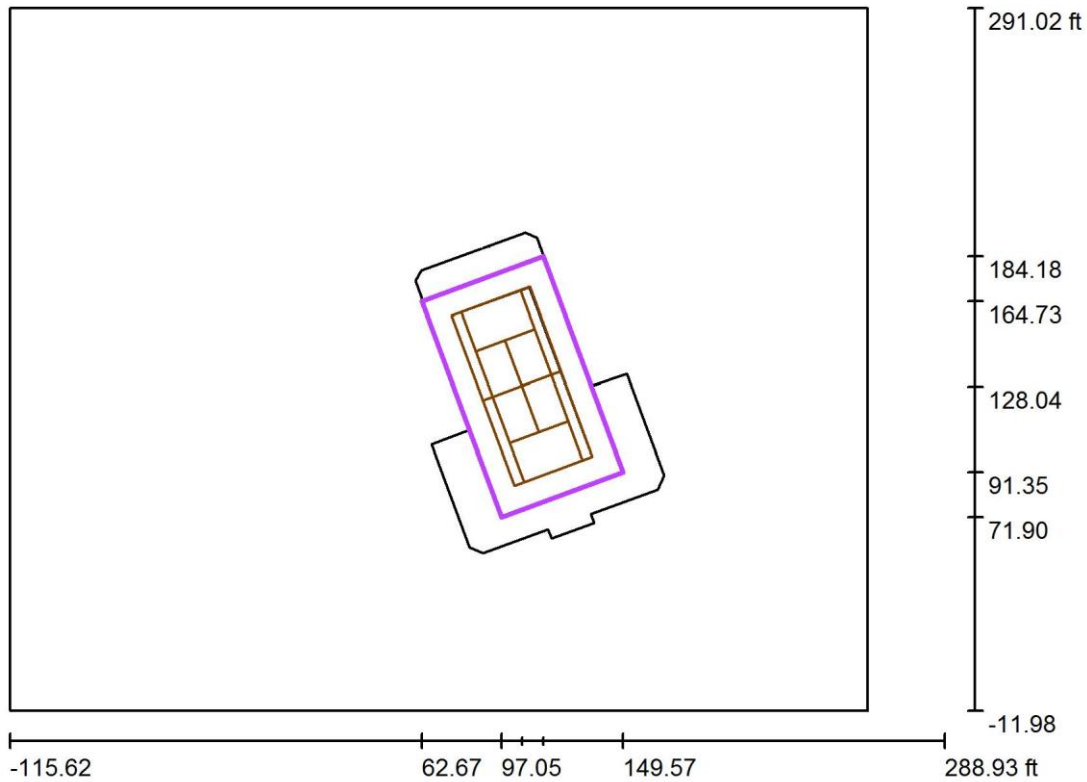
Position of surface in external scene:
 Marked point: (75.607 ft, 158.595 ft,
 0.000 ft)



Grid: 15 Points

E_{av} [fc]	E_{min} [fc]	E_{max} [fc]	u0	E_{min} / E_{max}
26	20	31	0.77	0.63

Tennis+Basketball Court / Court + 10 ft above / Summary



Scale 1 : 1000

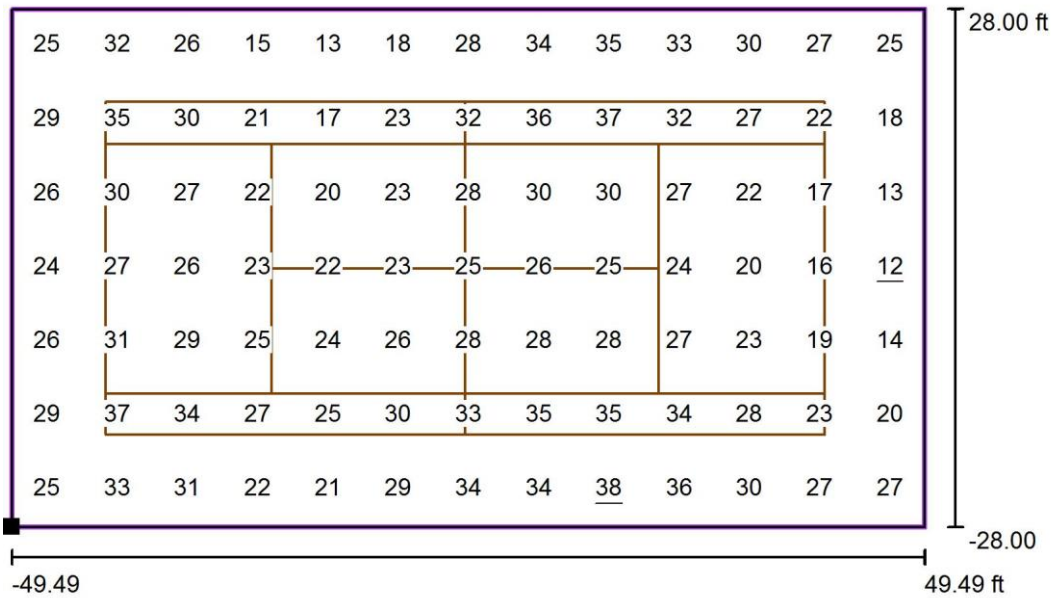
Position: (106.117 ft, 128.043 ft, 0.000 ft)
 Size: (98.989 ft, 56.005 ft)
 Rotation: (0.0°, 0.0°, -69.7°)
 Type: Normal, Grid: 13 x 7 Points
 Belongs to the following sport arena: Tennis 1

Results overview

No.	Type	E_{av} [fc]	E_{min} [fc]	E_{max} [fc]	u0	E_{min}/E_{max}	$E_{h,m}/E_m$	H [ft]	Camera
1	perpendicular	27	12	38	0.46	0.32	/	0.000	/

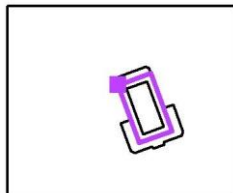
$E_{h,m}/E_m$ = Relationship between middle horizontal and vertical illuminance, H = Measuring Height

Tennis+Basketball Court / Court + 10 ft above / Value Chart (E, Perpendicular)



Values in Footcandles, Scale 1 : 250

Position of surface in external scene:
Marked point: (62.668 ft, 164.731 ft, 0.000 ft)



Grid: 13 x 7 Points

E_{av} [fc]
27

E_{min} [fc]
12

E_{max} [fc]
38

u_0
0.46

E_{min} / E_{max}
0.32