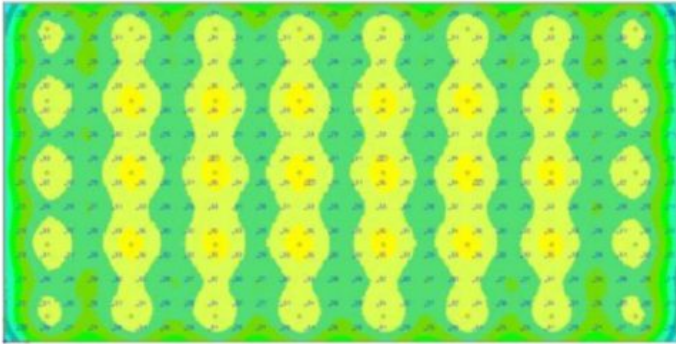


Indoor Riding Arena 100' x 200', 40 SYMA 150, 2.72 max/min, 29.8fc, 16'



**SKU:** AF66XG2RHBLED/U/150-40100x200(40)

**Product Tags:** [Arena](#), [Indoor Lighting](#), [LED](#)

**Product Page:**

<https://www.accessfixtures.com/p/indoor-riding-arena-100-x-200-40-syma-150-2-72-max-min-29-8fc-16/>

## Product Description

This Indoor Riding Arena 100' x 200', 40 SYMA 150, 2.72 max/min, 29.8fc, 16' lighting package utilizes 40 purpose-built SYMA 150s to evenly light a 100' x 200' indoor riding arena.

**Durable and Sealed:** IP65 rated fixtures for no bug, water, or dirt intrusion.

**High CRI:** >80 Color rendering index for high visibility.

**Frosted Lens:** A frosted anti-glare lens diffuses light throughout the arena.

Features:

**Luminaires:** SYMA 150

**Number of Luminaires:** 40

**Max/Min Ratio:** 2.72

**Average Footcandles:** 29.8

**Total Light Source Lumens:** 868,000

**Fixture Wattage:** 150

**Lens:** Frosted polycarbonate

**Rated Life (L70):** 50,000

**Kelvin:** 4000K

**Housing:** White polycarbonate housing

**Listings:** IP65 rated - IP rating system

**Dimming:** 0-10v dimming included in all fixtures

**Voltage Compatibility:** 120-277v

**Mounting:** Hook mount

**Warranty:** 5-Year Warranty

Custom arena LED Lighting packages typically ship in 2-3 weeks. Stock does fluctuate, so call **800-468-9925** for exact lead time.

Indoor Riding Arena 100' x 200', 40 SYMA 150, 2.72 max/min, 29.8fc, 16' Provides Exactly What You Need

Access Fixtures high performance lighting specialists use the most advanced photometric software to ensure you get the perfect arena lighting. As the premier expert in arena lighting, Access Fixtures has designed arena lighting for dressage, outdoor & indoor arenas, polo arenas, as well as home arenas across the world. Few arenas have identical needs. If you have any questions, our knowledgeable high performance lighting specialists in Worcester, MA are available to walk you through your arena LED lighting project. Call us today at **800-468-9925** to discuss your project. You can also email us at **customerservice@accessfixtures.com**.

Access Fixtures Warranty

Access Fixtures is proud to assemble high quality, long lasting lighting products

which are covered by a 5-year warranty. In accordance with our warranty policy, we will offer repair, replacement, or refund for qualifying claims. Please contact our friendly customer service team, located in Worcester, MA, to address any questions or concerns you may have. We can be reached at 800-468-9925 Monday-Friday 9-5 EST or via email at [sales@accessfixtures.com](mailto:sales@accessfixtures.com). Click here to view Access Fixtures' [complete warranty policy](#). Ready to Order Indoor Riding Arena 100' x 200', 40 SYMA 150, 2.72 max/min, 29.8fc, 16'?

You can place your order online here. Or, if you want additional information, give us a call at **800-468-9925**. Our team of friendly, expert high performance lighting specialists are available to provide what you need to purchase fixtures and illuminate your project with confidence.

## Product Attributes

- Dimensions: 100 &times; 200 &times; 16 in
- Weight: 100 lbs
- Application: Arena Lighting
- Availability: Typically ships in 2-4 weeks
- Available Finishes: White
- Average Footcandles: 29.8
- Color Rendering Index (CRI): 80+
- Housing: Polycarbonate front housing
- Indoor/Outdoor: Indoor
- Lens: Frosted polycarbonate lens
- Light Source: 4000K - Cool White
- Light Source Included: LED Array Included
- Listings: CUL, ETL Listed, IP65, UL Listed
- Max/Min Uniformity: 2.72
- Number of Fixtures: 40
- Product Family: SYMA

- Mounting: Hook Mount
- Rated Life: 50,000 Hours
- Warranty: 5-Year Limited Warranty
- Voltage: 120-277v

## Product Gallery

**40 SYMA 150s with 16' Mounting Height  
Average 29.8fc and 2.72 Max/Min Ratio**

