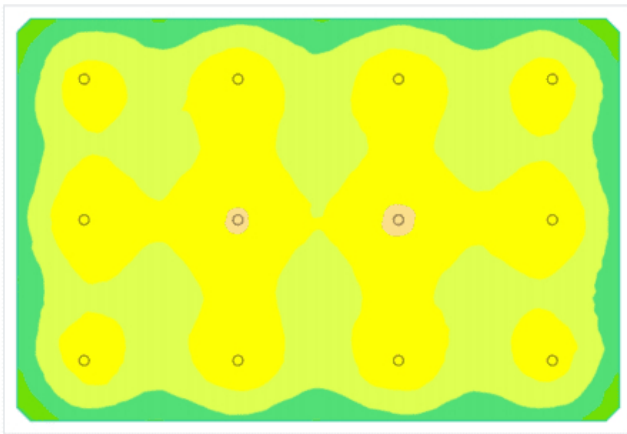




## Indoor Riding Arena LED 60'x90', Avg 29.7fc, 16' Mounting Height



**SKU:** AF55XLED8500L240935K(12)

**Product Tags:** [Arena](#), [Indoor Lighting](#), [LED](#)

**Product Page:**

<https://www.accessfixtures.com/p/indoor-riding-arena-led-60x90-avg-29-7fc-16-mounting-height/>

### Product Description

This Indoor Riding Arena LED 60'x90', Avg 29.7fc, 16' Mounting Height lighting package utilizes 12 SYMO 150 fixtures to light a 60' x 90' horse arena brightly and evenly.

**Anti-Glare:** The SYMO features an integrated prismatic refractor lens that reduces glare, maximizes efficiency, and produces even lighting.

**Extreme Life:** The fixtures used in this lighting package are L70 rated at over 162,000 hours for years of maintenance free life.

**Sealed and Durable:** The SYMO is IP66 rated and sealed and protected from blasts of water, dirt and dust intrusion, and bugs.

Features:

**Luminaires:** SYMO 150

**Number of Luminaires:** 12

**Max/Min Ratio:** 2.32

**Average Footcandles:** 29.7

**Total Light Source Lumens:** 229,029

**Fixture Wattage:** 150

**Lens:** Prismatic polycarbonate

**Rated Life (L70):** 162,000

**Weight:** 19 lbs each

**CRI:** 87

**Kelvin:** 5000K

**Fixture Dimension:** 18" x 8"

**Housing:** Die-cast aluminum housing with corrosion resistant gray powdercoat

**Listings:** IP66 rated - IP rating system

**Dimming:** 0-10v dimming included in all fixtures

**Voltage Compatibility:** 120-277v

**Mounting:** Mount with easy-install options including a hook mount

**Warranty:** 5-Year Warranty

Custom arena LED Lighting packages typically ship in 2-3 weeks. Stock does fluctuate, so call **800-468-9925** for exact lead time.

Access Fixtures Indoor Riding Arena LED 60'x 90' Lighting Provides Exactly What You Need

Access Fixtures high performance lighting specialists use the most advanced photometric software to ensure you get the perfect arena lighting. As the premier expert in arena lighting, Access Fixtures has designed arena lighting for dressage, outdoor & indoor arenas, polo arenas, as well as home arenas across the world.

Few arenas have identical needs. If you have any questions, our knowledgeable high performance lighting specialists in Worcester, MA are available to walk you through your arena LED lighting project. Call us today at **800-468-9925** to discuss your project. You can also email us at **customerservice@accessfixtures.com**.

## Access Fixtures Warranty

Access Fixtures is proud to assemble high quality, long lasting lighting products which are covered by a 5-year warranty. In accordance with our warranty policy, we will offer repair, replacement, or refund for qualifying claims. Please contact our friendly customer service team, located in Worcester, MA, to address any questions or concerns you may have. We can be reached at 800-468-9925 Monday-Friday 9-5 EST or via email at sales@accessfixtures.com. Click here to view Access Fixtures' [complete warranty policy](#). Ready to Order Indoor Riding Arena LED 60'x90', Avg 29.7fc, 16' Mounting Height?

You can place your order online here. Or, if you want additional information, give us a call at **800-468-9925**. Our team of friendly, expert high performance lighting specialists are available to provide what you need to purchase fixtures and illuminate your project with confidence.

## Product Attributes

- Dimensions: 100 &times; 200 &times; 16 in
- Weight: 100 lbs
- Application: Arena Lighting
- Availability: Typically ships in 2-4 weeks
- Available Finishes: Gray
- Average Footcandles: 29.7
- Color Rendering Index (CRI): 70+
- Housing: Powdercoat finish, Die cast aluminum housing
- Indoor/Outdoor: Indoor
- Lens: Clear prismatic polycarbonate lens

- Light Source: 5000K - Bright White
- Light Source Included: LED Array Included
- Listings: IP66, UL Listed
- Max/Min Uniformity: 2.32
- Number of Fixtures: 12
- Product Family: SYMO
- Mounting: Hook Mount
- Rated Life: 162,000 Hours
- Warranty: 5-Year Limited Warranty
- Mounting Height: 16 ft
- Voltage: 120-277v

## Product Gallery



