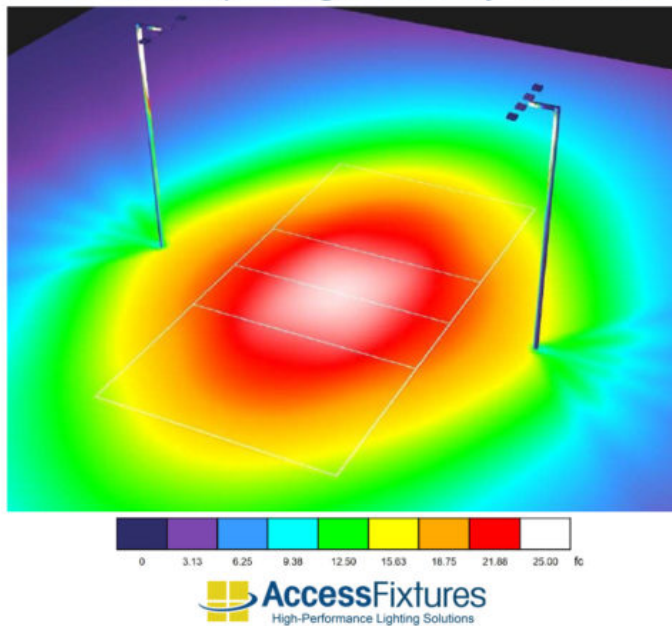


Outdoor Volleyball Court Lighting 30-ft Poles, 20 fc - 1.60 max/min

Outdoor Volleyball Court Lighting 20 fc - 1.60 max/min Light Uniformity - 30-ft Poles



SKU: AF72XV1FLB200L8P230QB2-FC20

Product Tags: [Volleyball](#)

Product Page:

<https://www.accessfixtures.com/p/outdoor-volleyball-court-lighting-30ft-poles-20fc/>

Product Description

Access Fixtures Outdoor Volleyball Court Lighting 30-ft Poles, 20 fc, 1.60

Max/Min is an excellent choice for club-level volleyball venues. It features:

8) APTA 200 Sports Lighters with slip fitter mounts 2) 30-ft 5" x 5"

7-gauge Straight Square Steel Poles 2) Quad Bullhorns 20 FC Average

Footcandles 1.60 Light Uniformity (max/min footcandles) Photometric

Report IP67-Rated withstands the dust, torrential rain, and even total immersion for up to 30 minutes.

Whether you're interested in setting up volleyball court lighting at home, establishing a club-level volleyball court for condo residents, or building a professional volleyball venue for competition, Access Fixtures is your premier expert in court lighting. For lighting other volleyball court configurations, please check out Access Fixtures Volleyball Packages featuring 10-30 footcandles. Precision Design for Optimal Light Levels

Outdoor Volleyball Court Lighting 30-ft Poles, 20 fc - 1.60 max/min is designed for a standard volleyball court measuring 30 ft. wide x 60 ft. long. This **club-level** package provides **20 average footcandles** and does not go below 15 footcandles. This achieves a **fantastic max/min (uniformity) ratio of 1.60**, which assures light is evenly spread across the entire playing area. A max/min uniformity of 3 or less is considered good: the lower the ratio number, the better uniformity. Best of all, this package features only two poles, making it truly affordable.

Reliable Energy-Efficient LED Outdoor Volleyball Court Lighting

The Outdoor Volleyball Court Lighting come with weatherproof, energy-efficient, LED extreme-life, APTA sport lights. The modular construction features modules that are all but indestructible, however, if ever the need might arise, each module can be to be replaced individually. **Luminaires:** APTA 200 LED Sport Lights

Number of Luminaires: 8

Fixture Wattage: 205w

Rated Life (L70): 200,000+ Hours

Optics: Type 4 medium beam

Weight: 23.66 lbs each luminaire

Dimensions: 28.27" x 12.99" x 2.76"

Housing: Die-cast aluminum housing with corrosion-resistant polyester powdercoat. Finish meets 1,000-hour salt-spray certification per ASTM B117/ISO 9227:2012. Modular LED design with IP67 rating.

Listings: IP67, UL Listed, CuL Listed, RoHS, ENEC, CB, CB, IK08

Dimming: 0-10v dimming included in all fixtures.

Backlight Shield: to minimize light trespass, Included

Voltage Compatibility: 120-277v

Warranty: 5-Year Warranty

Surge Protection: (optional) High-Strength 30-foot Square Steel Poles

The straight square steel poles used in this package ships come complete with a mounting template, base plates, anchor bolts, and base covers. For volleyball courts located in high-wind areas, e.g., Florida, Georgia, South Carolina, Louisiana, the Caribbean, and most coastal areas, ask us about EPA (Effective Projected Area) wind ratings and wind tolerances for each setup. Installations in these areas may require heavier poles or alternate designs. Our engineers can provide data and pole recommendations for any location. As specs can affect lead time and pricing, it is best to call first.

Number of Poles: 2

Pole Height: 30 Feet

Shaft Size: 5" x 5"

Gauge: 7-Gauge

Installation: Anchor-Based

Number of Anchor Bolts: 4 per pole

Base Plate Dimensions: 11 x 11" x 1" thickness

Base Plate Anchor Bolt Circle: 12.75" diameter

Anchor Bolt Dimensions: M22 x 36"

Weight: 205 lbs each pole, 410 lbs total

Tenon: 2 3/8" Tenon

Finish: Baked-on, textured, architectural bronze finish.

Base Cover: Square 10.75" x 10.75" x 4" 2-piece steel base cover

Hand Hole: Cast-iron-reinforced hand hole with cover

Specifications: Conforms to ASTM-A 500 Grade B. Minimum yield strength of 46,000 PSI.

Secure Mounting

This package mounts two fixtures on each pole tenon using a quad bullhorn. For more information about the fixtures, mounts, or the poles in this package, call

800-468-9925 or send us an email at customerservice@accessfixtures.com.

Prompt Delivery of Your Outdoor Volleyball Court Lighting Package

Everything in this 2-pole Outdoor Volleyball Court Lighting package typically ships in 2-4 weeks. Even with these custom-built fixtures, we are almost always able to meet or exceed this estimated window. We'll ship your poles from the factory location closest to you. Stock does fluctuate, so call 800-468-9925 for an exact lead time.

Access Fixtures Volleyball Lighting Provides Exactly What You Need

We at Access Fixtures want to make sure you buy with confidence and that you get the perfect volleyball court for your particular site. We've designed court lighting for HOAs, clubs and schools, as well as recreational courts throughout the US and the Caribbean. While volleyball courts are standardized, few will have identical needs. Some regions have local ordinances regulating light trespass, glare, and light pollution. Packages for coastal regions benefit from adaptations to compensate for wind, salt spray, or local weather conditions. If you have any questions, our helpful lighting specialists in Worcester, MA are available to walk you through your volleyball court LED lighting project. Give us a call today at 800-468-9925 to discuss your project. You can also email us at customerservice@accessfixtures.com.

Access Fixtures 5-Year Warranty

All Access Fixtures sports court fixtures come with 5-year warranties. If your product is found to have a manufacturing defect, we will replace components, the entire product, or issue a refund. We stand behind the quality of our products. Our customer service team is happy to help with before- or after-sale questions and address your concerns. If you have any questions, give us a call at 800-468-9925. Ready to Order Outdoor Volleyball Court Lighting 30-ft Poles, 20 fc - 1.60 max/min?

You can place your order online, [here](#). Or, if you want additional information, give us a call at 800-468-9925. Our team of friendly expert lighting specialists is

available to provide what you need to purchase fixtures and illuminate your project with confidence.

Product Attributes

- Dimensions: 30 × 30 × 30 in
- Weight: 100 lbs
- Availability: Typically ships in 2-4 weeks
- Available Finishes: Bronze
- Ballast/Driver: 700mA Driver
- Color Rendering Index (CRI): 80, 70, 90+
- Color Temperature (K): 3000K, 4000K, 5000K
- Components: APTA Sports Light, Bullhorn, Pole, Pole Base Cover, Pole Mounting Kit, Slip Fitter Mount
- Features: Complete Sports Light Package, Wet location
- Housing: Die-cast aluminum housing with corrosion-resistant polyester powder. Finish meets 1,000-hour salt-spray certification per ASTM B117/ISO 9227:2012. Modular LED design with IP67 rating.
- LED Type: Modular LED Array
- Lens: Type 4 Medium
- Light Source: White Light Spectrum
- Light Source Lumens: 198,784
- Listings: IP67, CB, CE, CuL Listed, RoHS, UL Listed
- Mounting: Slip Fitter on Quad Bullhorn
- Product Family: APTA
- Rated Life: 200,000+ Hours
- Sports Level of Play: Club
- Pole Height: 30 Feet
- Number of Fixtures: 8
- Number of Poles: 2
- System Watts Filter: 1,640

- System Watts: 1,560
- Voltage: 120-277v
- Warranty: 5-Year Warranty

Product Gallery

Outdoor Volleyball Court Lighting

20 FC

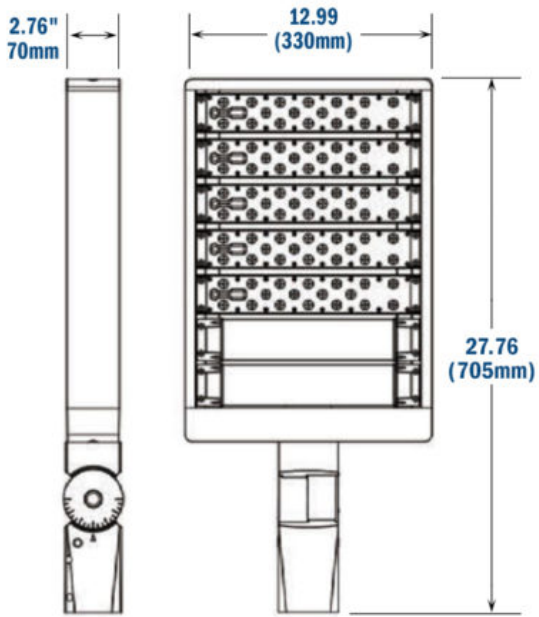
1.60 Max/Min
Uniformity

- 8) APTA 200
- 2) 30' Poles
- 2) Quad Bullhorns



APTA 200 LED Slip Fitter Mount





Light distribution without Back Light Shield



Light distribution with Back Light Shield

