

ZIBO 47w LED High Voltage Wall Pack, 347-480v - Extreme Life



SKU: AF33XWP15QF1X41H

Product Tags: [LED](#)

Product Page:

<https://www.accessfixtures.com/p/zibo-47w-commercial-led-wall-pack-347v480v/>

Product Description

ZIBO 47w High Voltage Wall Pack is a great choice for commercial, industrial, or hospitality areas requiring durable design and multiple options. The integrated LEDs mean you never have to change a bulb. The die-cast aluminum housing alongside the super durable powder coat finish provide an impact, corrosion, and weather resistant fixture.

Extreme Life: This high voltage wall pack is L70 rated at 165,000 hours, ensuring

years of maintenance-free usage!

Multiple Options: Choice of color, Kelvin, and other options allows for freedom and flexibility of design.

Prismatic Glass Lens: A prismatic borosilicate glass lens softly diffuses light and prevents glare.

Features:

- 47w integrated LEDs - Die-cast aluminum housing - 347v | 480v - Aluminum reflector - 5,503 lumens - 165,000 L70 hours - Surface mount or 4" recessed outlet box mounting - CSA and IP65 listed

80+ CRI (learn more about Color Rendering Index [here](#))

- Dimmable driver - 14.25" x 9" x 7.25" in - 15 lbs. - 5 year warranty Options:

Choice of powdercoat finish: Bronze or custom RAL - ([learn more here](#))

Choice of Kelvin ([learn more here](#))

- Choice of battery backup - Choice of surge protection - Optional photocell

Access Fixtures 5-Year Warranty

All Access Fixtures products come with a 5-year warranty. If your product is found to have a manufacturing defect, we will replace components, the entire product, or issue a refund. We stand behind the quality of our products. Our customer service team, located in Worcester, MA, is happy to address any questions, comments, or concerns you may have. Please give us a call at 800-468-9925. Please view Access Fixtures' [return policy](#). Get a Custom Photometric Analysis for Your ZIBO 47w High Voltage Wall Pack Project

A photometric analysis is a custom computer simulation of your particular project. This service provides average footcandles at various heights, max/min (uniformity) ratios, minimum footcandles, light trespass levels, and more. For exacting lighting specifications, a photometric analysis helps you ensure light levels before making a big purchase. One of our lighting specialist will walk you through the process so you know exactly what you will be receiving. Call us at 800-468-9925 or customerservice@accessfixtures.com for more information about ordering a photometric analysis for your project.

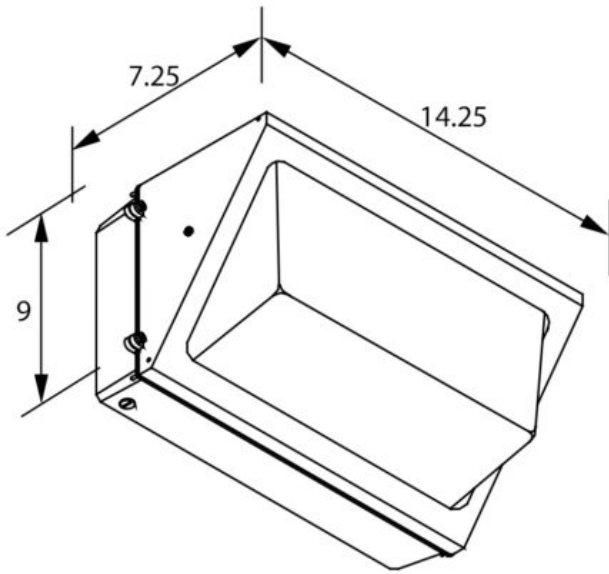
Ready to Order ZIBO 47w High Voltage Wall Pack or Speak to a Lighting Specialist?

You can place your order online, here. Or, if you want additional information, give us a call at 800-468-9925. Does your project require multiple fixtures? Ask us about quantity discounts. Our team of friendly expert lighting specialists are available to provide what you need to purchase fixtures and illuminate your project with confidence.

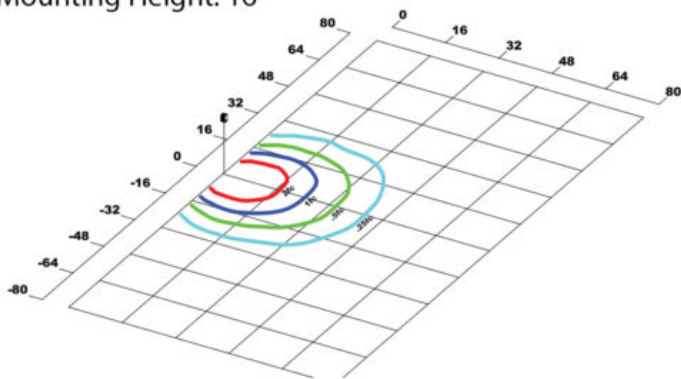
Product Attributes

- Dimensions: 20 × 10 × 10 in
- Weight: 20 lbs
- Availability: Typically ships in 5-7 business days
- Light Source: 4000K - Cool White, 5000K - Bright White
- Available Finishes: Bronze, Custom RAL
- Color Rendering Index (CRI): 80+
- Housing: Die cast aluminum housing
- System Watts: 47
- Lens: Clear prismatic glass lens
- Light Source Included: LED Array Included
- Light Source Lumens: 5503
- Listings: IP65
- Mounting: Includes template for mounting directly over 4-inch electrical box
- Mounting Height: 10 ft., 15 ft., 20 ft.
- Product Family: ZIBO
- Rated Life: 165,000 Hours
- Voltage: 347-480v
- Warranty: 5-Year Limited Warranty
- Style: Forward Throw

Product Gallery

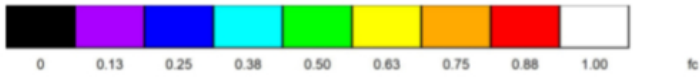
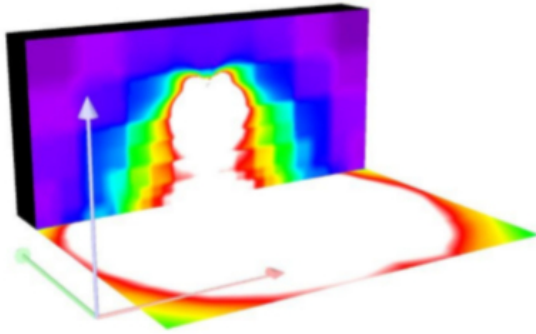


Mounting Height: 16'

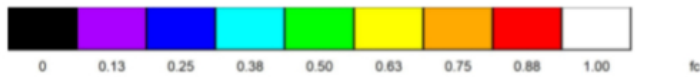
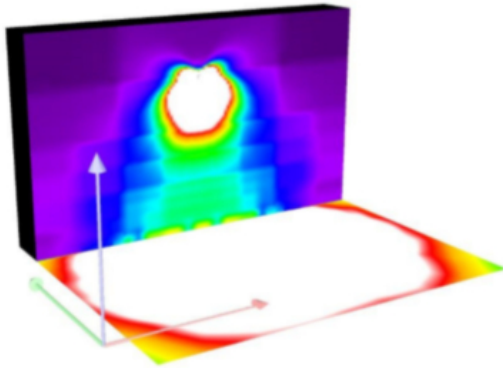




**ZIBO 47 Extreme Life
Mounted at 10'**
Emits >1fc 32' Across and 22' Out

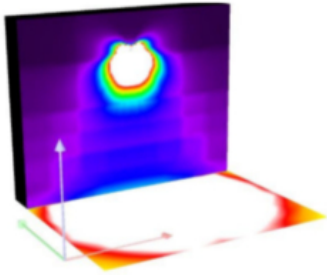


**ZIBO 47 Extreme Life
Mounted at 15'**
Emits >1fc 34' Across and 22' Out





ZIBO 47 Extreme Life
Mounted at 20'
Emits >1fc 32' Across and 23' Out



**BUY AMERICAN
ACT COMPLIANT**