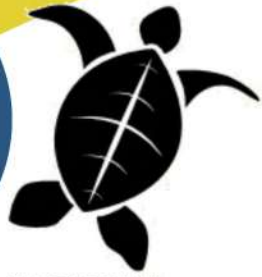


SPEC SHEET



TURTLE-SAFE

590nm Amber

CONA

LED Bollard Light



AccessFixtures.com

1 Durable Construction:

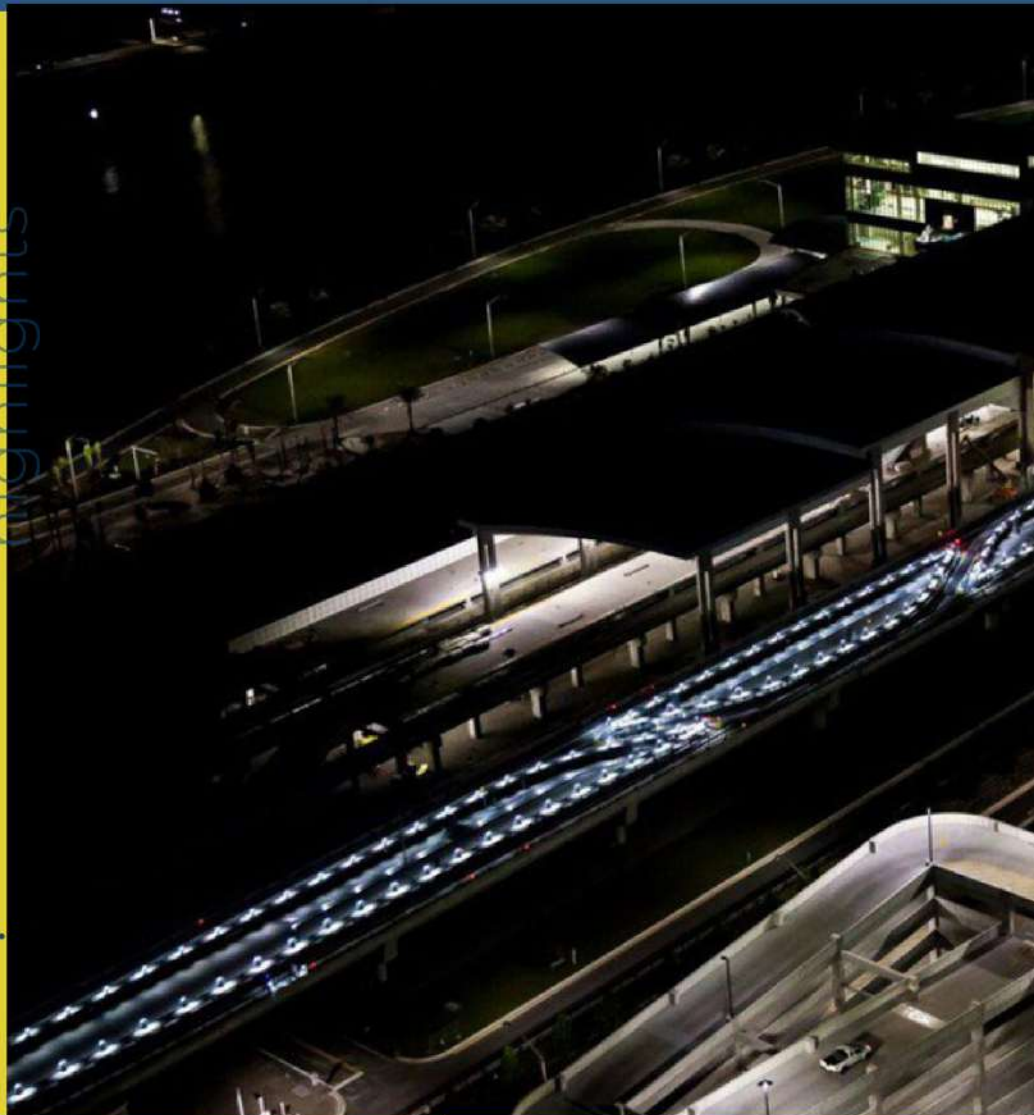
CONA is CSA and IP65 rated against water jets, features a vandal-resistant lens, and an extruded aluminum housing that provides maximum life and durability.

2 EXTREME-LIFE:

CONA features EXTREME-LIFE L70 @ 147,000 hours, providing years of virtually maintenance-free performance.

3 Cone Reflector:

This bollard light reflects light down and around the unit in a 360-degree pattern, maximizing efficiency.



PH: 800-468-9925
Sales@AccessFixtures.com
AccessFixtures.com



AccessFixtures
High-Performance Lighting Solutions



CONA OPTIONS

Light Source	LED
Kelvin	590nm Amber
Watts	11w, 17w, 24w
Available Finishes	Bronze, Black, Custom RAL
Housing	Extruded Aluminum Housing, Stainless Steel
Mounting	Mounting Kit with 8" Zinc-Plated Anchor Bolts, Included.
Height	42" [Standard], 36", 30"
Lens	Clear UV-Stabilized Polycarbonate or Opal UV-Stabilized
Driver	Electronic Driver, 120-277V or 347, 50/60Hz
Finish	Textured Bronze or Black Powdercoat Finish Over a Chromate Conversion Coating
Listings	CSA, IP65, ANSI/UL 1598, 8750;
Voltage	120-277v, 347 [17w only]
Warranty	5-year limited warranty



CONA OPTIONS

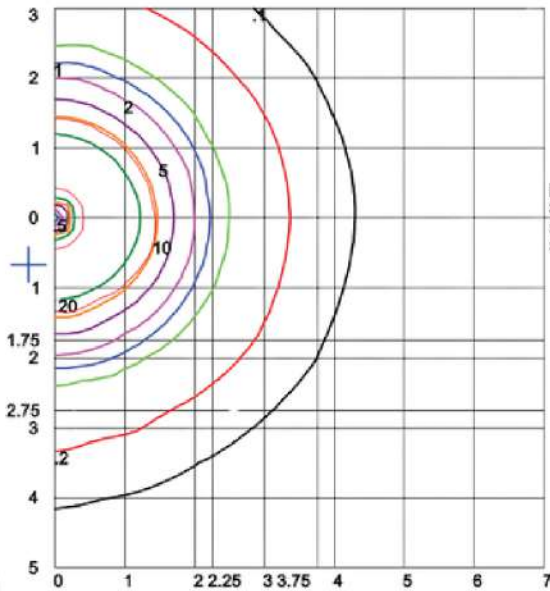
OPTIONS

- Choice of Finish: Bronze, Black, or custom RAL colors available upon request
- Stainless Steel
- Standard (42") or custom height down to 30"
- Choice of shipping anchor bolts ahead of time or with bollard light
- GCFI Outlet
- Surge protection
- 590nm Amber, FWC Certified or PC Amber
- Shielding options
- Backup battery

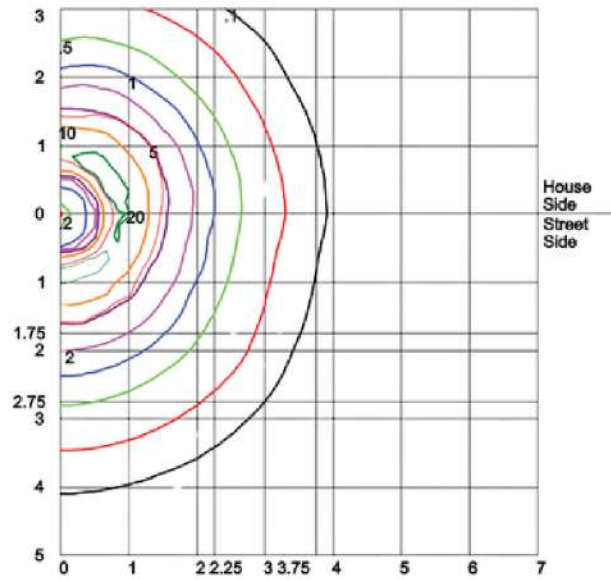




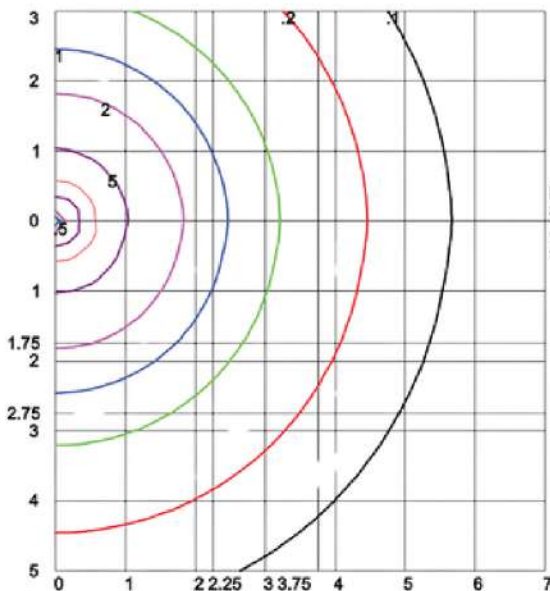
PHOTOMETRIC DATA



Distance In Units Of Mounting Height
 Values Based On 3 Foot Mounting Height
 1/2 Maximum Candela Trace Shown As Dashed Curve
 (*) = Maximum Candela Point



House Side
 Street Side



Distance In Units Of Mounting Height
 Values Based On 3 Foot Mounting Height
 1/2 Maximum Candela Trace Shown As Dashed Curve
 (*) = Maximum Candela Point

House Side
 Street Side

Input Watts	Optics	Amber LEDs				
		Lumens	LPW	B	U	G
17	Cone Reflectors	360	21	0	2	0
	BOG3 Type III Glass	277	16	0	2	0
	BOG5 Type V Glass	272	16	0	2	0
	BOL Louvers	187	11	0	1	0



Ordering Information

Example: AF33XBOFRWQ-C-1X22-U-AMB-C-Z-42-SF

Model	Optics/Beam	Wattage	Driver	CCT	Lens	Color	Height	Options
<p>AF33XBOFRWQ= Round Flat Top Bollard with Low Glare White Cone Reflector</p> <p>AF33XBOFRLQ= Round Flat Top Bollard with LED Cone Reflector</p>	<p>C=Type III F=Wide Beam Spread</p>	<p>1x10 = 10w 1x15 = 15w 1x22 = 22w</p>	<p>U = 120-277v C = 347* *15w Model Only</p>	<p>AMB=Amber FWC=FWC Certified</p>	<p>C=Clear UV- Stabilized Polycarbonate Vandal- Resistant Lens L= Opal UV- Stabilized Polycarbonate Vandal- Resistant Lens</p>	<p>B=Black Z=Bronze C=Custom</p>	<p>30=30" height 36=36" height 42=42" Standard Height</p>	<p>SF=SingleFuse* DF=Double Fuse* SP=Surge Protection GFI=GFCI outlet, 15A, 120v GSB=180° Glare Shield, Black GSZ=180° Glare Shield, Bronze GSC=180° Glare Shield,Custom Color (Consult Lighting Specialist) S5=Microwave Sensor with Dimming & Remote Programming BU=Battery Backup,90 Minutes* BUC=Cold Start Battery Backup, -20°C, 90 Minutes*</p> <p>*120-277v models only</p>

