



Pickleball Court lighting ZM-2018-000628

The simulation and result is based on an ideal environment, the actual lighting performance may be affected by actual environment. The lighting simulation is for reference only.:

Date: 08 / 28 / 2018



Table of contents

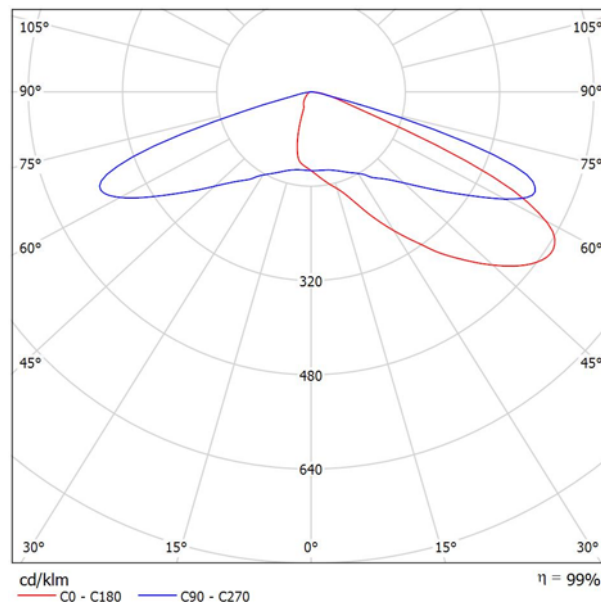
Pickleball Court lighting ZM-2018-000628	
Project Cover	1
Table of contents	2
AF72XFLB200-T4M1 200W Backlight shielding	
Luminaire Data Sheet	3
Exterior Scene 1	
Planning data	4
Luminaires (layout plan)	5
Luminaires (coordinates list)	6
Calculation surfaces (results overview)	7
3D Rendering	8
False Color Rendering	9
Exterior Surfaces	
Calculation Surface 1	
Isolines (E, Perpendicular)	10
Greyscale (E, Perpendicular)	11
Value Chart (E, Perpendicular)	12
Table (E, Perpendicular)	13



AF72XFLB200-T4M1 200W Backlight shielding / Luminaire Data Sheet

Luminous emittance 1:

See our luminaire catalog for an image of the luminaire.

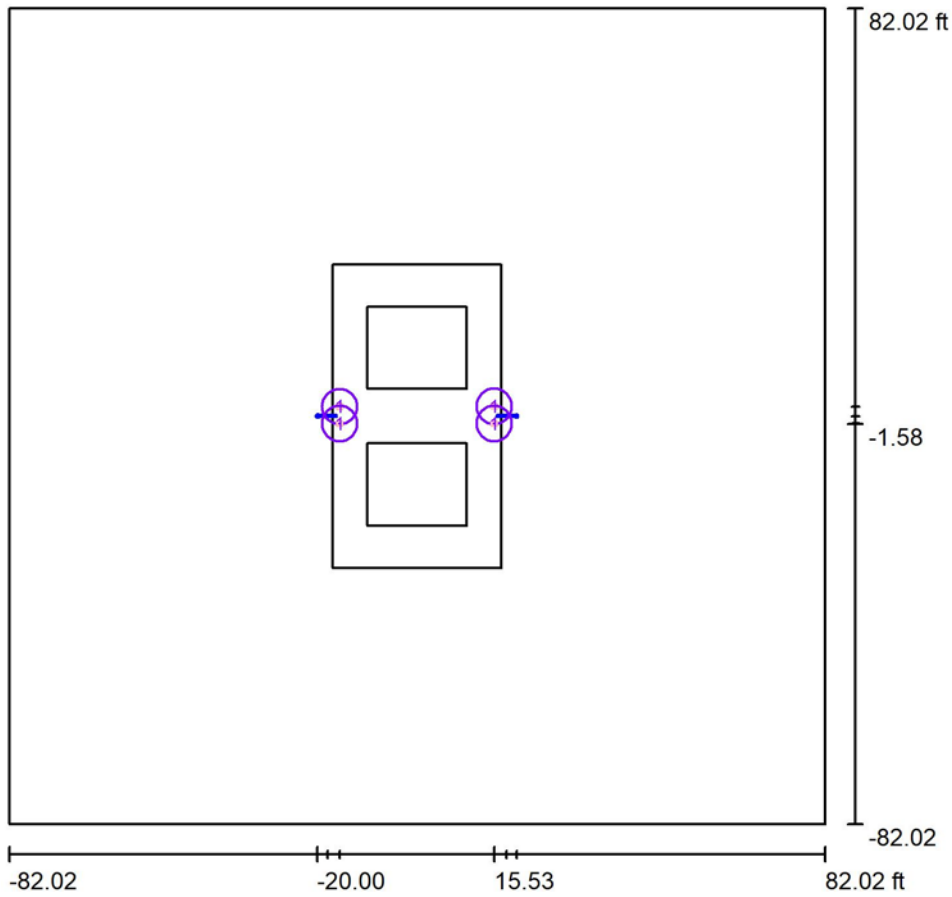


Luminaire classification according to CIE: 100
CIE flux code: 24 61 95 100 99

Due to missing symmetry properties, no UGR table can be displayed for this luminaire.



Exterior Scene 1 / Planning data



Light loss factor: 0.90, ULR (Upward Light Ratio): 0.0%

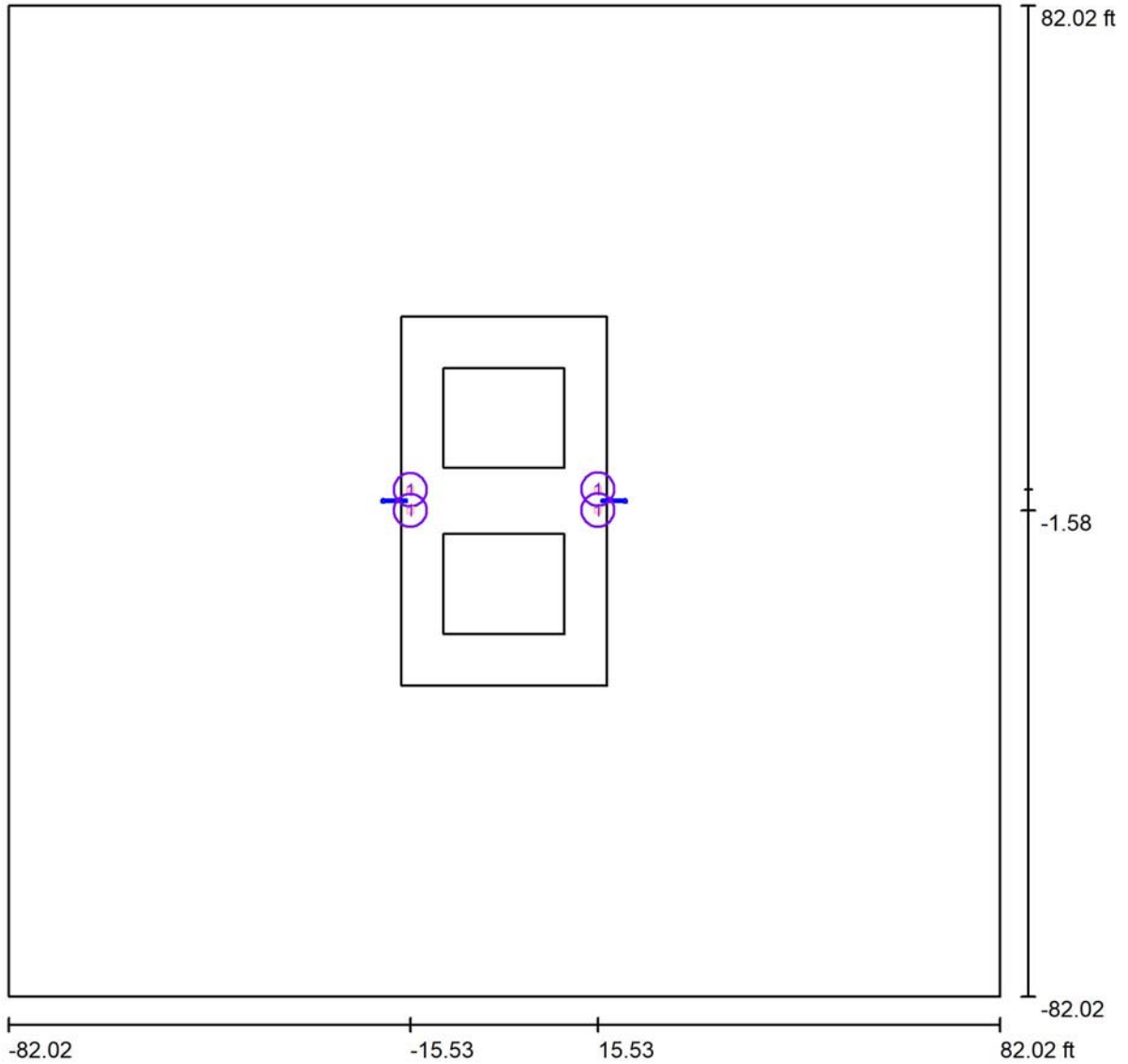
Scale 1:464

Luminaire Parts List

No.	Pieces	Designation (Correction Factor)	Φ (Luminaire) [lm]	Φ (Lamps) [lm]	P [W]
1	4	AF72XFLB200-T4M1 200W Backlight shielding (1.000)	21032	21219	194.3
Total:			84130	84876	777.2



Exterior Scene 1 / Luminaires (layout plan)



Scale 1 : 358

Luminaire Parts List

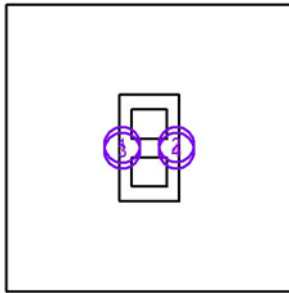
No.	Pieces	Designation
1	4	AF72XFLB200-T4M1 200W Backlight shielding



Exterior Scene 1 / Luminaires (coordinates list)

AF72XFLB200-T4M1 200W Backlight shielding

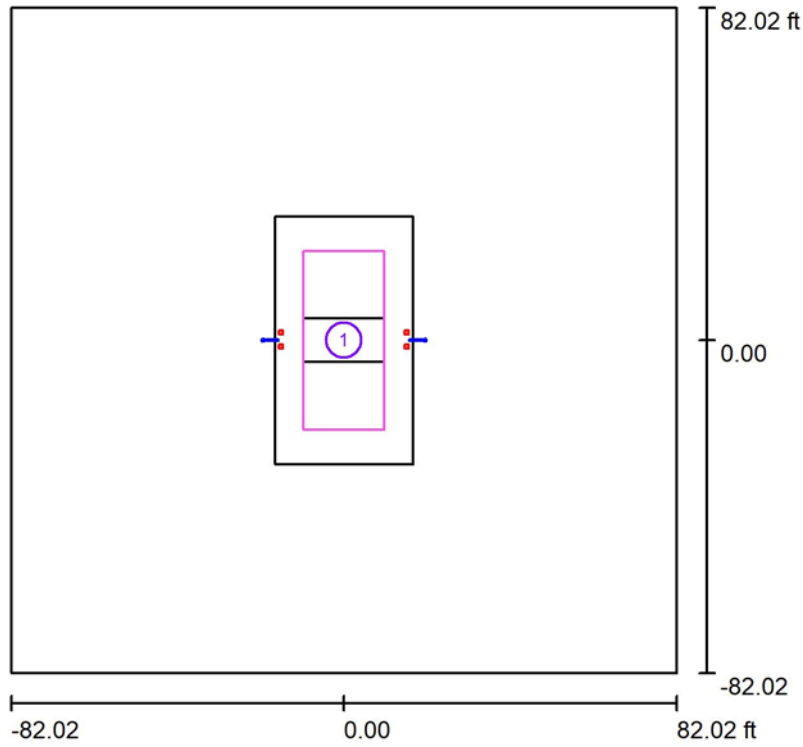
21032 lm, 194.3 W, 1 x 1 x NICHIA 3535 5000K D340 (Correction Factor 1.000).



No.	Position [ft]			Rotation [°]		
	X	Y	Z	X	Y	Z
1	-15.530	1.873	20.000	0.0	0.0	0.0
2	15.530	1.913	20.000	0.0	0.0	180.0
3	-15.530	-1.576	20.000	0.0	0.0	0.0
4	15.530	-1.536	20.000	0.0	0.0	180.0



Exterior Scene 1 / Calculation surfaces (results overview)



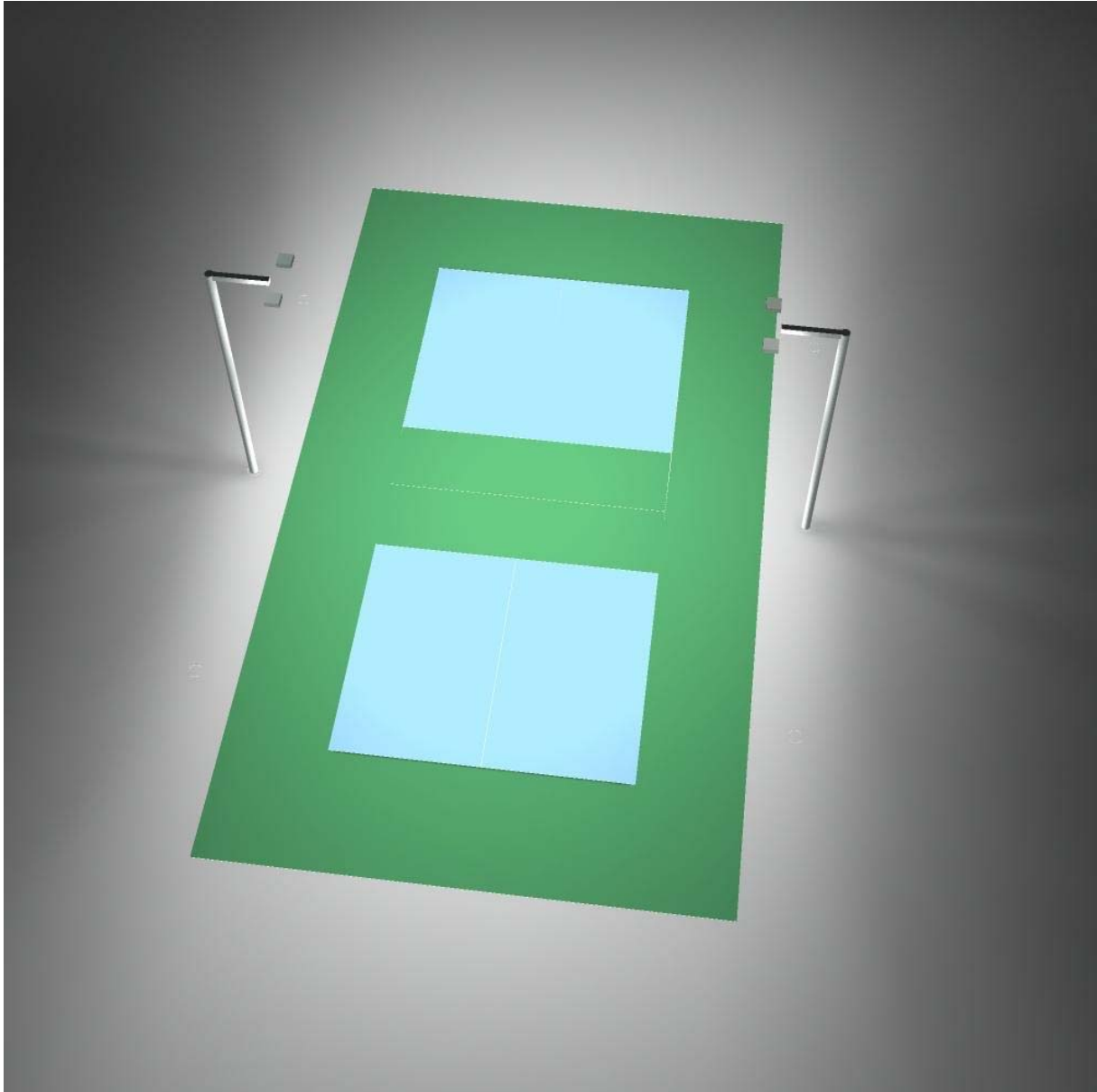
Scale 1 : 569

Calculation Surface List

No.	Designation	Type	Grid	E_{av} [fc]	E_{min} [fc]	E_{max} [fc]	u0	$\frac{E_{min}}{E_{max}}$
1	Calculation Surface 1	perpendicular	5 x 11	31	21	41	0.682	0.514

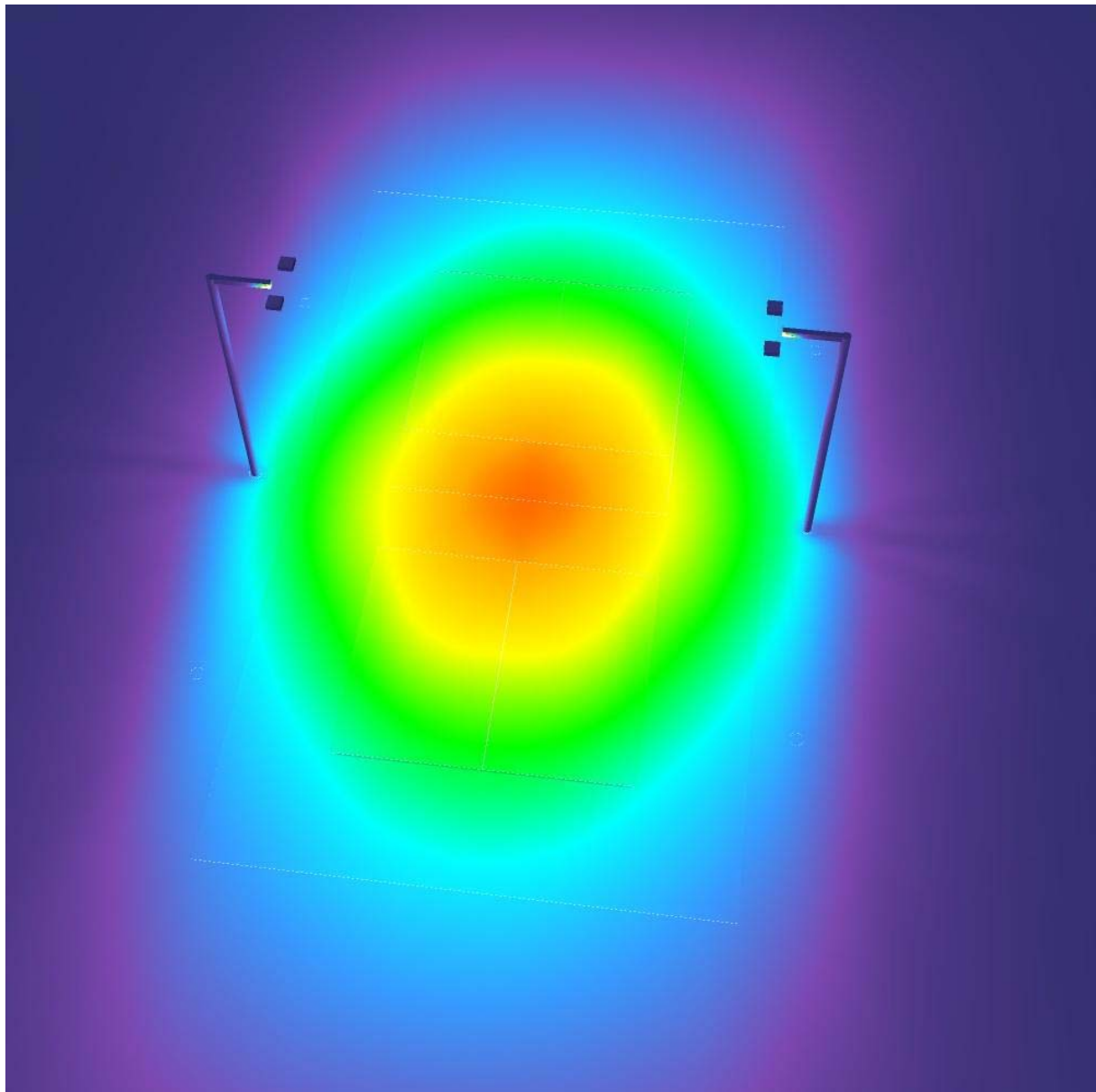


Exterior Scene 1 / 3D Rendering





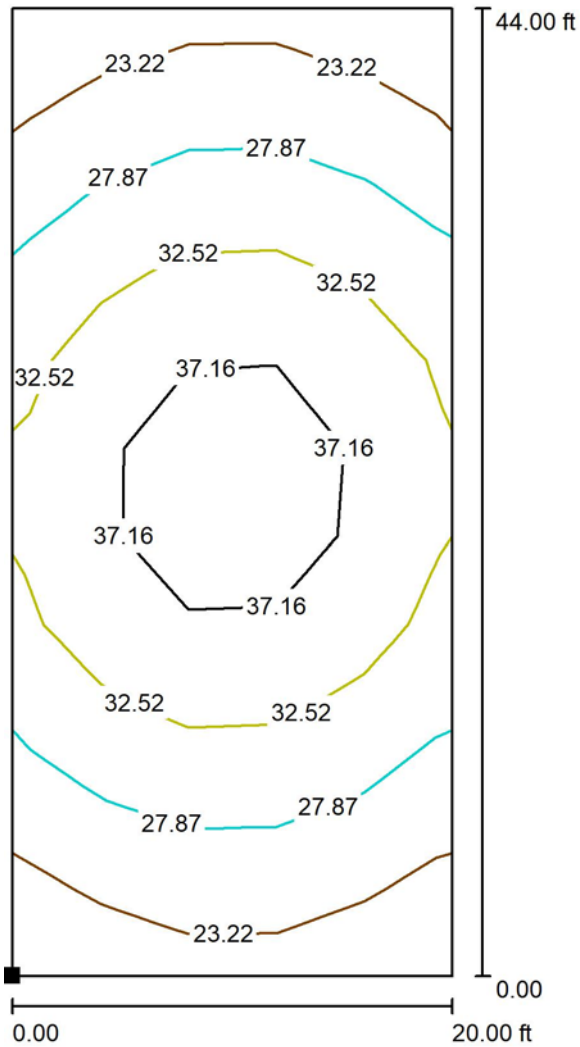
Exterior Scene 1 / False Color Rendering



0 5.00 10.00 15.00 20.00 25.00 30.00 35.00 40.00 fc

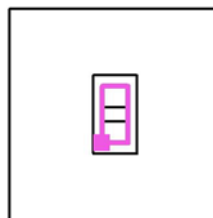


Exterior Scene 1 / Calculation Surface 1 / Isolines (E, Perpendicular)



Values in Footcandles, Scale 1 : 105

Position of surface in external scene:
Marked point:
(-10.000 ft, -22.000 ft, 3.000 ft)

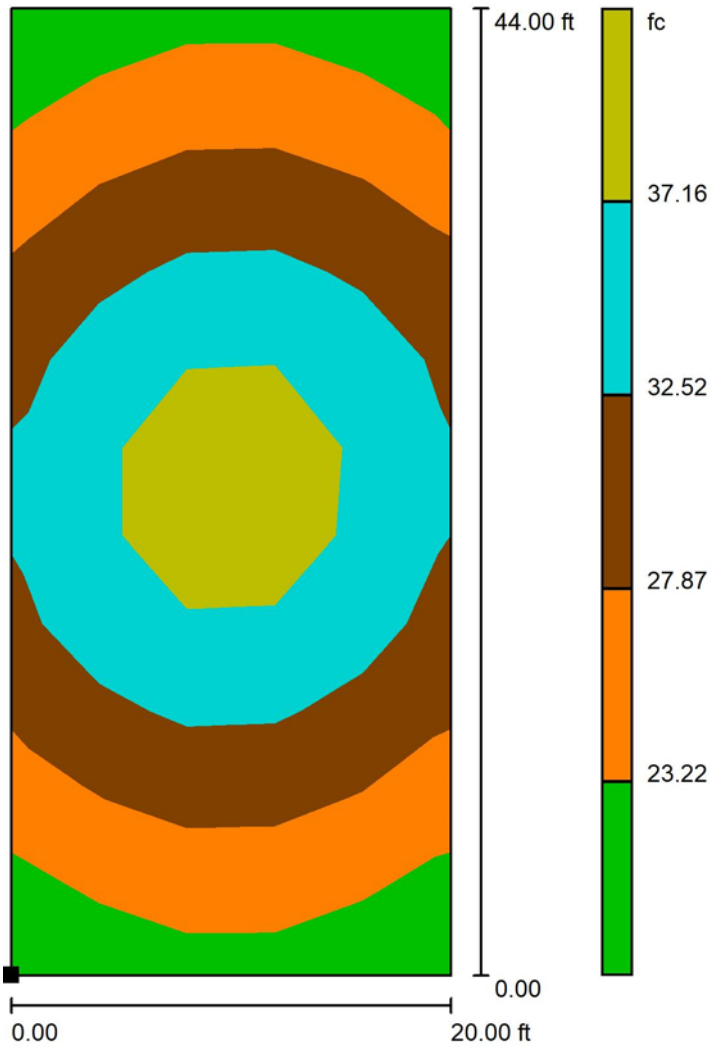


Grid: 5 x 11 Points

E_{av} [fc]	E_{min} [fc]	E_{max} [fc]	u0	E_{min} / E_{max}
31	21	41	0.682	0.514

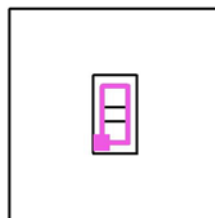


Exterior Scene 1 / Calculation Surface 1 / Greyscale (E, Perpendicular)



Scale 1 : 105

Position of surface in external scene:
Marked point:
(-10.000 ft, -22.000 ft, 3.000 ft)



Grid: 5 x 11 Points

E_{av} [fc]
31

E_{min} [fc]
21

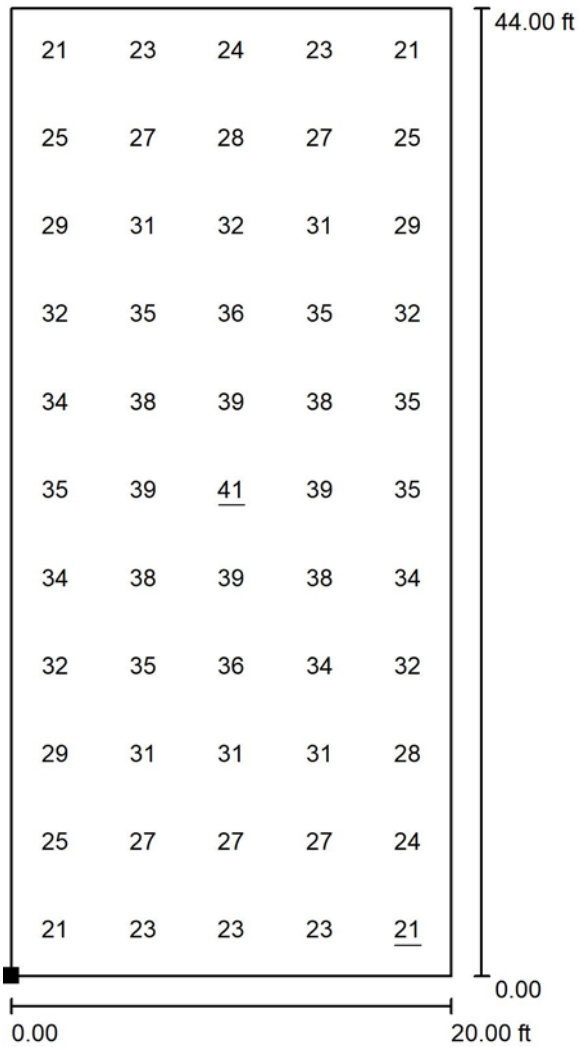
E_{max} [fc]
41

u_0
0.682

E_{min} / E_{max}
0.514

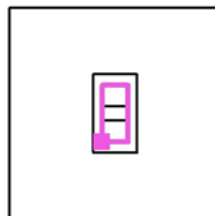


Exterior Scene 1 / Calculation Surface 1 / Value Chart (E, Perpendicular)



Values in Footcandles, Scale 1 : 105

Position of surface in external scene:
Marked point:
(-10.000 ft, -22.000 ft, 3.000 ft)



Grid: 5 x 11 Points

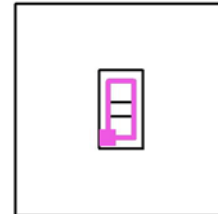
E_{av} [fc]	E_{min} [fc]	E_{max} [fc]	u0	E_{min} / E_{max}
31	21	41	0.682	0.514



Exterior Scene 1 / Calculation Surface 1 / Table (E, Perpendicular)



Position of surface in external scene:
Marked point:
(-10.000 ft, -22.000 ft, 3.000 ft)



42.000	<u>21</u>	23	24	23	<u>21</u>
38.000	25	27	28	27	25
34.000	29	31	32	31	29
30.000	32	35	36	35	32
26.000	34	38	39	38	35
22.000	35	39	<u>41</u>	39	35
18.000	34	38	39	38	34
14.000	32	35	36	34	32
10.000	29	31	31	31	28
6.000	25	27	27	27	24
2.000	<u>21</u>	23	23	23	<u>21</u>
ft	2.000	6.000	10.000	14.000	18.000

Attention: The coordinates refer to the image above. Values in Footcandles.

Grid: 5 x 11 Points

E_{av} [fc]	E_{min} [fc]	E_{max} [fc]	u0	E_{min} / E_{max}
31	21	41	0.682	0.514