



Pickleball Court lighting ZM-2018-000628

The simulation and result is based on an ideal environment, the actual lighting performance may be affected by actual environment. The lighting simulation is for reference only.:

Date: 08 / 28 / 2018



Table of contents

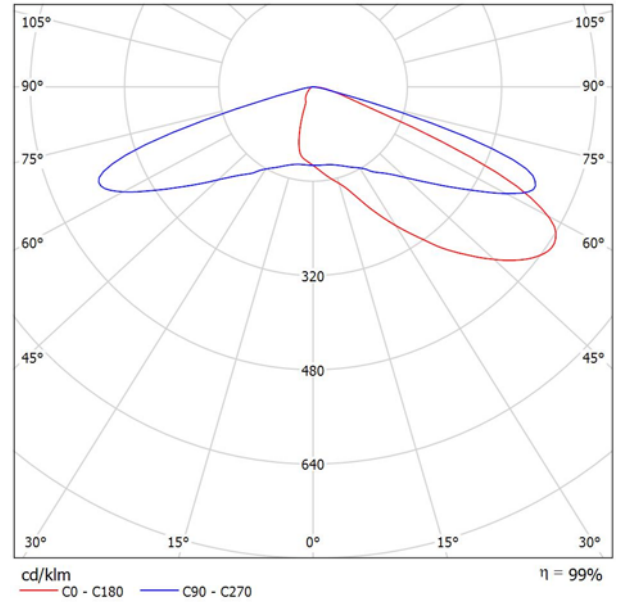
Pickleball Court lighting ZM-2018-000628	
Project Cover	1
Table of contents	2
AF72XFLB240-T4M1 240W Backlight shielding	
Luminaire Data Sheet	3
Exterior Scene 1	
Planning data	4
Luminaires (layout plan)	5
Luminaires (coordinates list)	6
Calculation surfaces (results overview)	7
3D Rendering	8
False Color Rendering	9
Exterior Surfaces	
Calculation Surface 1	
Isolines (E, Perpendicular)	10
Greyscale (E, Perpendicular)	11
Value Chart (E, Perpendicular)	12
Table (E, Perpendicular)	13



AF72XFLB240-T4M1 240W Backlight shielding / Luminaire Data Sheet

Luminous emittance 1:

See our luminaire catalog for an image of the luminaire.

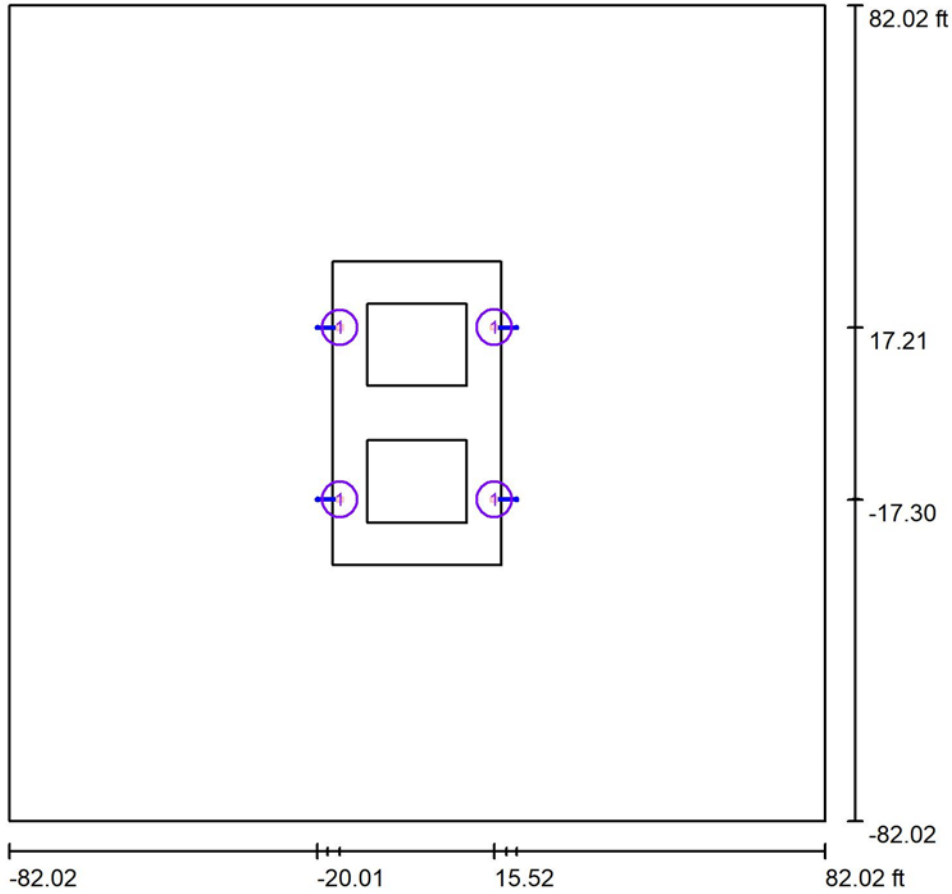


Luminaire classification according to CIE: 100
CIE flux code: 24 61 95 100 99

Due to missing symmetry properties, no UGR table can be displayed for this luminaire.



Exterior Scene 1 / Planning data



Light loss factor: 0.90, ULR (Upward Light Ratio): 0.0%

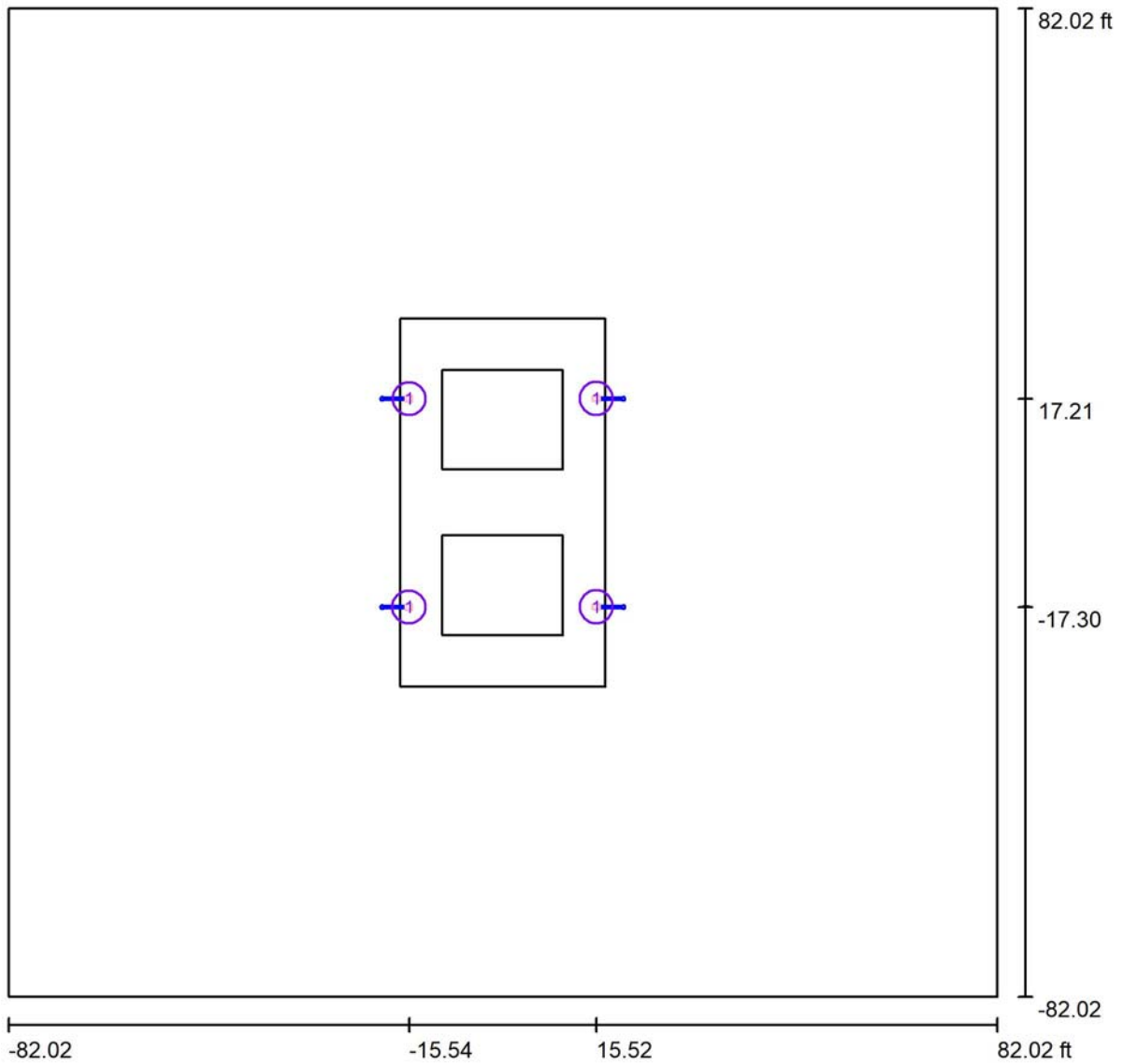
Scale 1:464

Luminaire Parts List

No.	Pieces	Designation (Correction Factor)	Φ (Luminaire) [lm]	Φ (Lamps) [lm]	P [W]
1	4	AF72XFLB240-T4M1 240W Backlight shielding (1.000)	25544	25777	232.9
Total:			102177	Total: 103108	931.6



Exterior Scene 1 / Luminaires (layout plan)



Scale 1 : 358

Luminaire Parts List

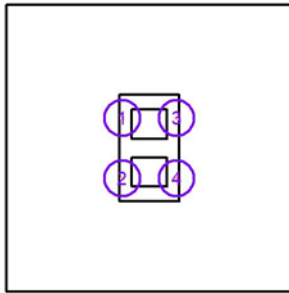
No.	Pieces	Designation
1	4	AF72XFLB240-T4M1 240W Backlight shielding



Exterior Scene 1 / Luminaires (coordinates list)

AF72XFLB240-T4M1 240W Backlight shielding

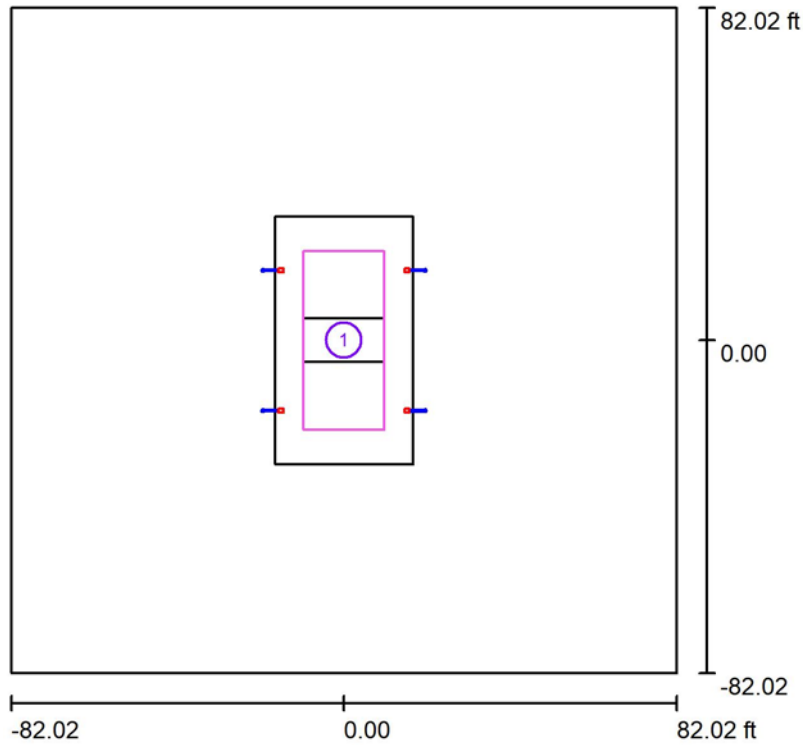
25544 lm, 232.9 W, 1 x 1 x NICHIA 3535 5000K D340 (Correction Factor 1.000).



No.	Position [ft]			Rotation [°]		
	X	Y	Z	X	Y	Z
1	-15.534	17.215	20.000	0.0	0.0	0.0
2	-15.541	-17.296	20.000	0.0	0.0	0.0
3	15.525	17.255	20.000	0.0	0.0	180.0
4	15.518	-17.255	20.000	0.0	0.0	180.0



Exterior Scene 1 / Calculation surfaces (results overview)



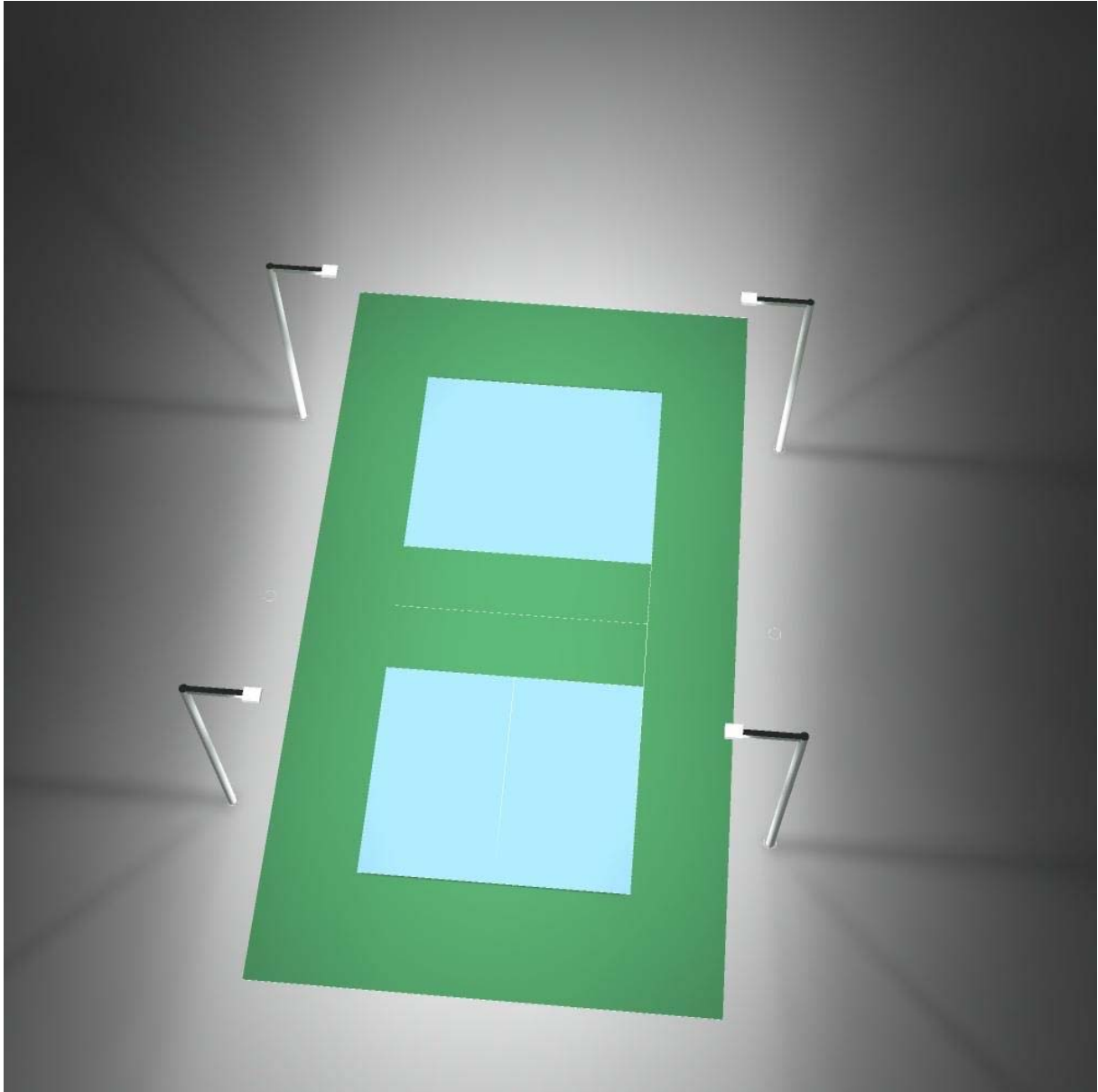
Scale 1 : 569

Calculation Surface List

No.	Designation	Type	Grid	E_{av} [fc]	E_{min} [fc]	E_{max} [fc]	u0	$\frac{E_{min}}{E_{max}}$
1	Calculation Surface 1	perpendicular	5 x 11	30	26	33	0.878	0.804

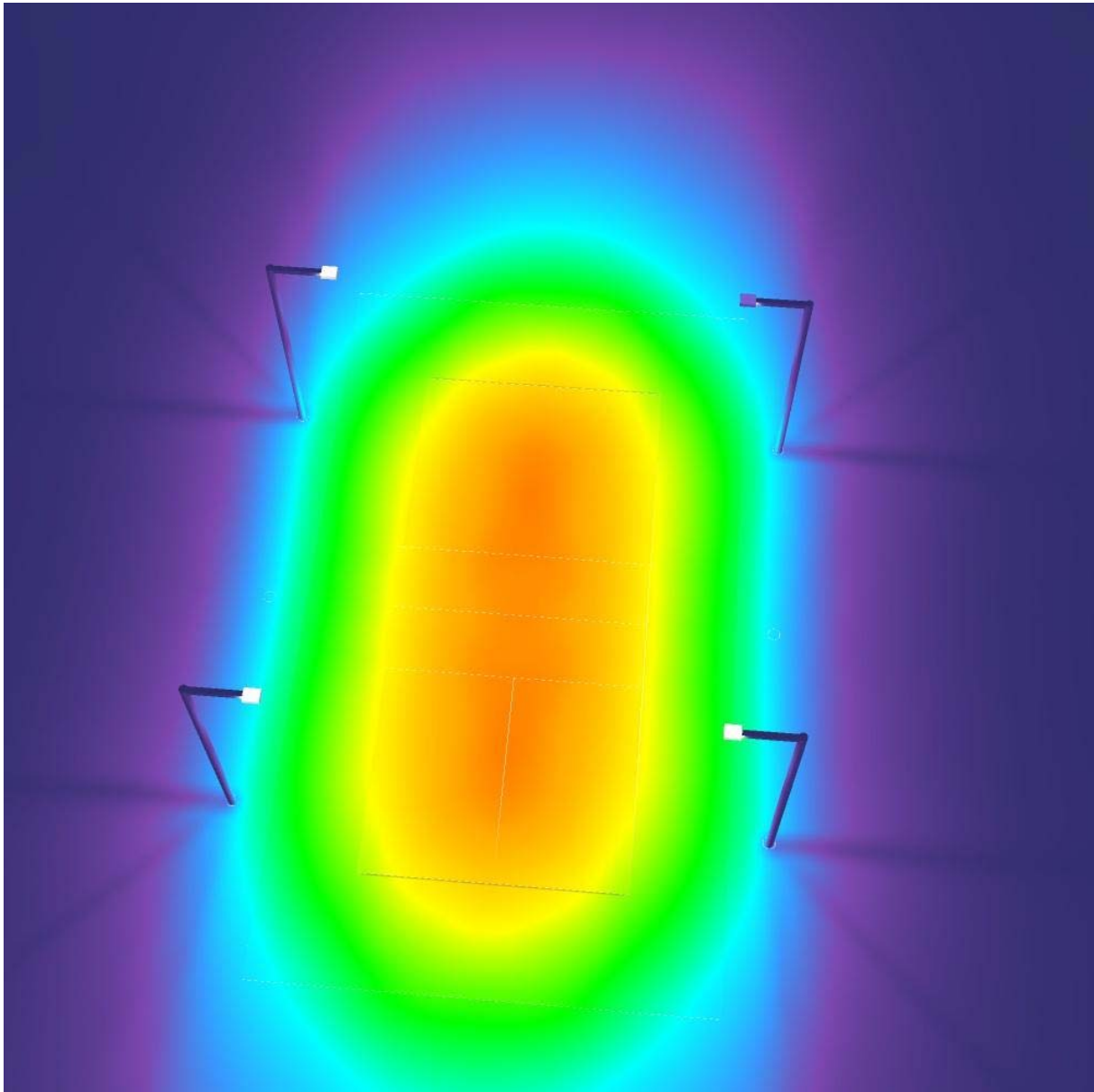


Exterior Scene 1 / 3D Rendering





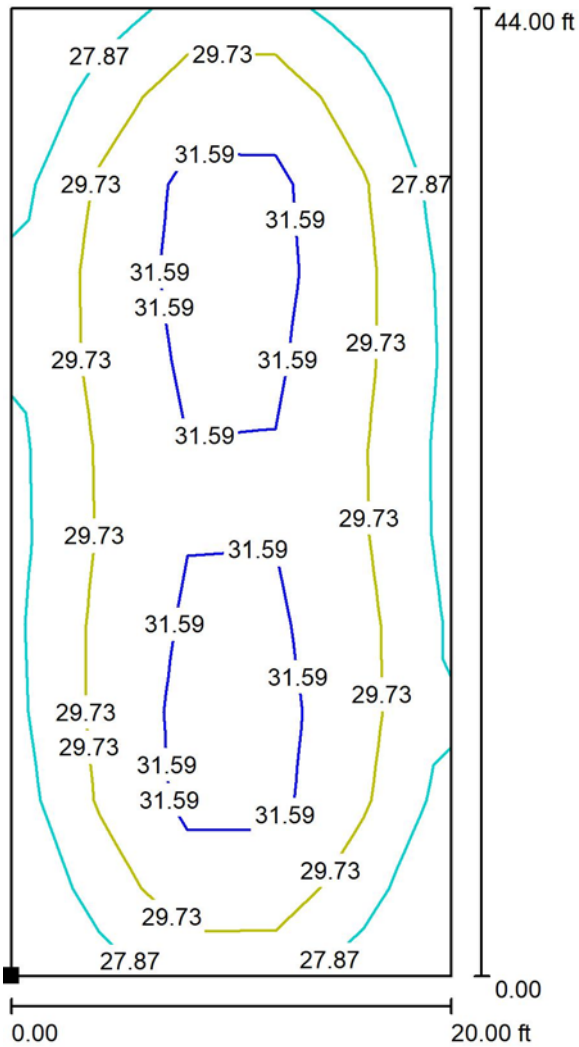
Exterior Scene 1 / False Color Rendering



0 4.38 8.75 13.13 17.50 21.88 26.25 30.63 35.00 fc

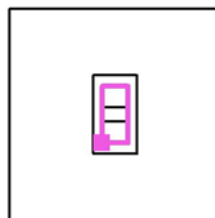


Exterior Scene 1 / Calculation Surface 1 / Isolines (E, Perpendicular)



Values in Footcandles, Scale 1 : 105

Position of surface in external scene:
Marked point:
(-10.000 ft, -22.000 ft, 3.000 ft)

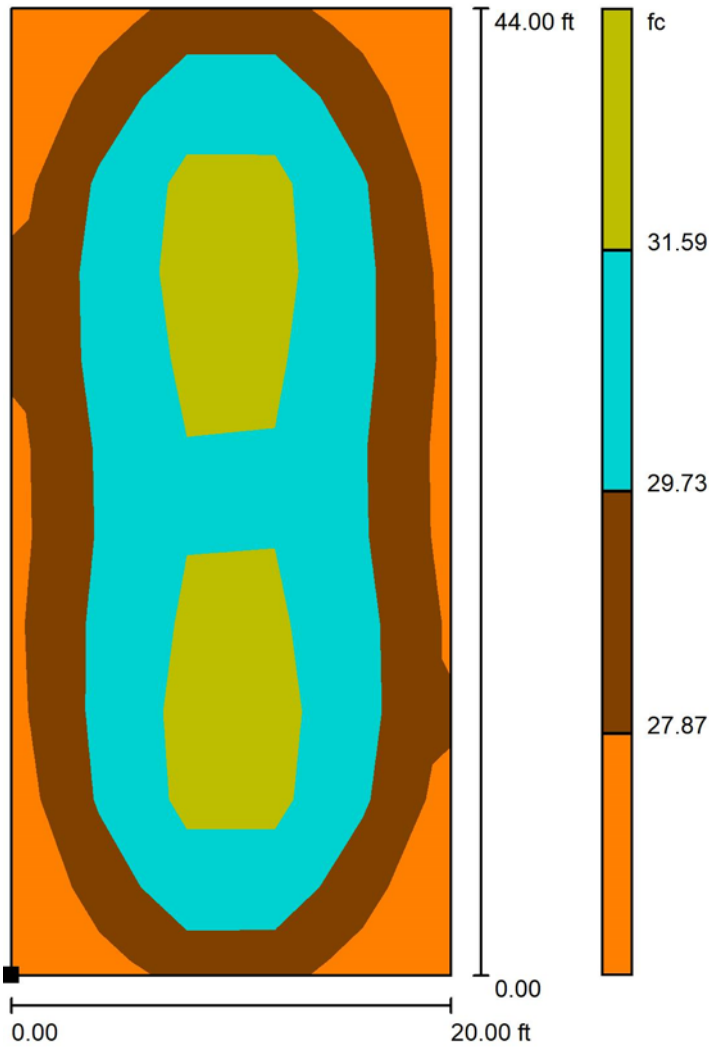


Grid: 5 x 11 Points

E_{av} [fc]	E_{min} [fc]	E_{max} [fc]	u0	E_{min} / E_{max}
30	26	33	0.878	0.804

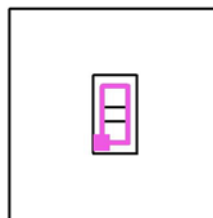


Exterior Scene 1 / Calculation Surface 1 / Greyscale (E, Perpendicular)



Scale 1 : 105

Position of surface in external scene:
Marked point:
(-10.000 ft, -22.000 ft, 3.000 ft)

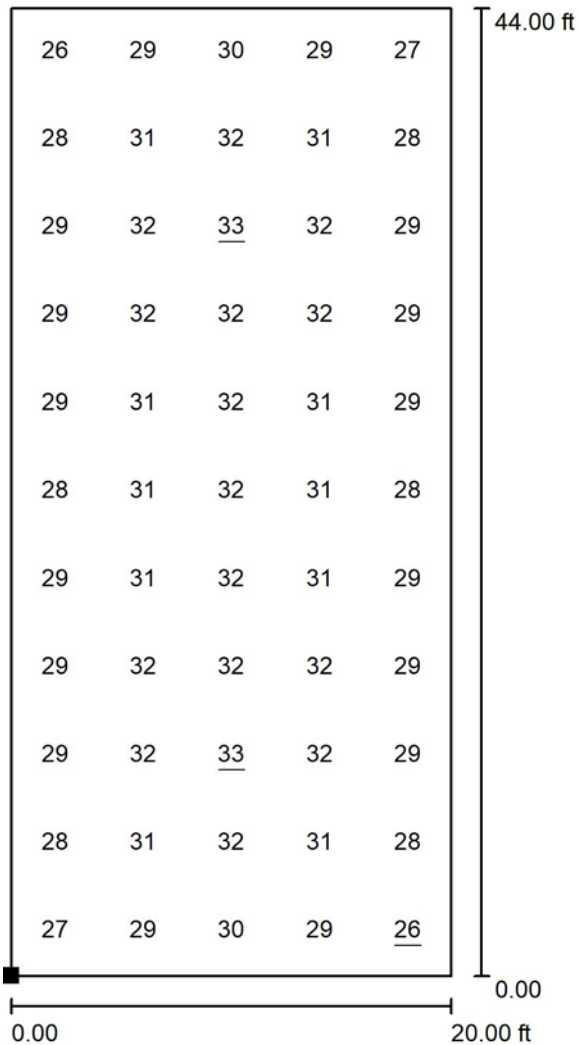


Grid: 5 x 11 Points

E_{av} [fc]	E_{min} [fc]	E_{max} [fc]	u0	E_{min} / E_{max}
30	26	33	0.878	0.804

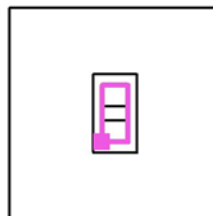


Exterior Scene 1 / Calculation Surface 1 / Value Chart (E, Perpendicular)



Values in Footcandles, Scale 1 : 105

Position of surface in external scene:
Marked point:
(-10.000 ft, -22.000 ft, 3.000 ft)



Grid: 5 x 11 Points

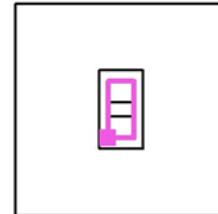
E_{av} [fc]	E_{min} [fc]	E_{max} [fc]	u0	E_{min} / E_{max}
30	26	33	0.878	0.804



Exterior Scene 1 / Calculation Surface 1 / Table (E, Perpendicular)



Position of surface in external scene:
Marked point:
(-10.000 ft, -22.000 ft, 3.000 ft)



42.000	<u>26</u>	29	30	29	27
38.000	28	31	32	31	28
34.000	29	32	<u>33</u>	32	29
30.000	29	32	32	32	29
26.000	29	31	32	31	29
22.000	28	31	32	31	28
18.000	29	31	32	31	29
14.000	29	32	32	32	29
10.000	29	32	<u>33</u>	32	29
6.000	28	31	32	31	28
2.000	27	29	30	29	<u>26</u>
ft	2.000	6.000	10.000	14.000	18.000

Attention: The coordinates refer to the image above. Values in Footcandles.

Grid: 5 x 11 Points

E_{av} [fc]
30

E_{min} [fc]
26

E_{max} [fc]
33

u_0
0.878

E_{min} / E_{max}
0.804