



## **Pickleball Court Lighting - 2 Courts, 2 Poles, 8 Luminaires**

The simulation and result is based on an ideal environment, the actual lighting performance may be affected by actual environment. The lighting simulation is for reference only.:

Date: 08 / 28 / 2018

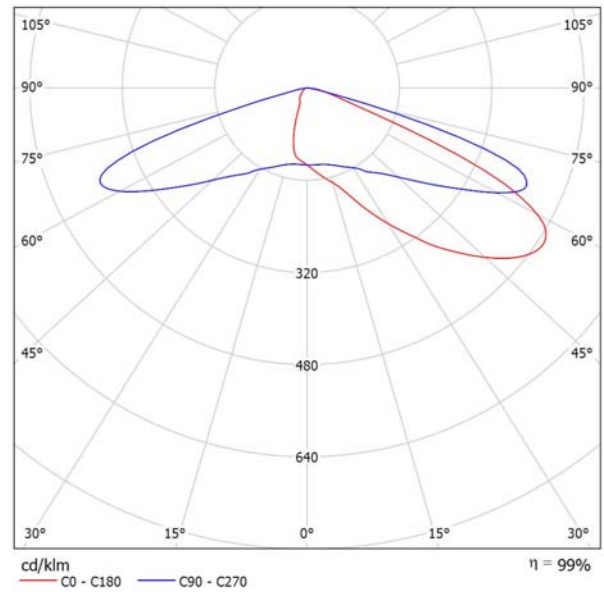
## Table of contents

<b>Pickleball Court lighting ZM-2018-000628</b>	
Project Cover	1
Table of contents	2
<b>AF72XFLB200-T4M1 200W Backlight shielding</b>	
Luminaire Data Sheet	3
<b>Exterior Scene 1</b>	
Planning data	4
Luminaires (layout plan)	5
Luminaires (coordinates list)	6
Calculation surfaces (results overview)	7
3D Rendering	8
False Color Rendering	9
<b>Exterior Surfaces</b>	
<b>Calculation Surface 1</b>	
Isolines (E, Perpendicular)	10
Value Chart (E, Perpendicular)	11
<b>Calculation Surface 1</b>	
Isolines (E, Perpendicular)	12
Value Chart (E, Perpendicular)	13

## AF72XFLB200-T4M1 200W Backlight shielding / Luminaire Data Sheet

Luminous emittance 1:

See our luminaire catalog for an image of the luminaire.

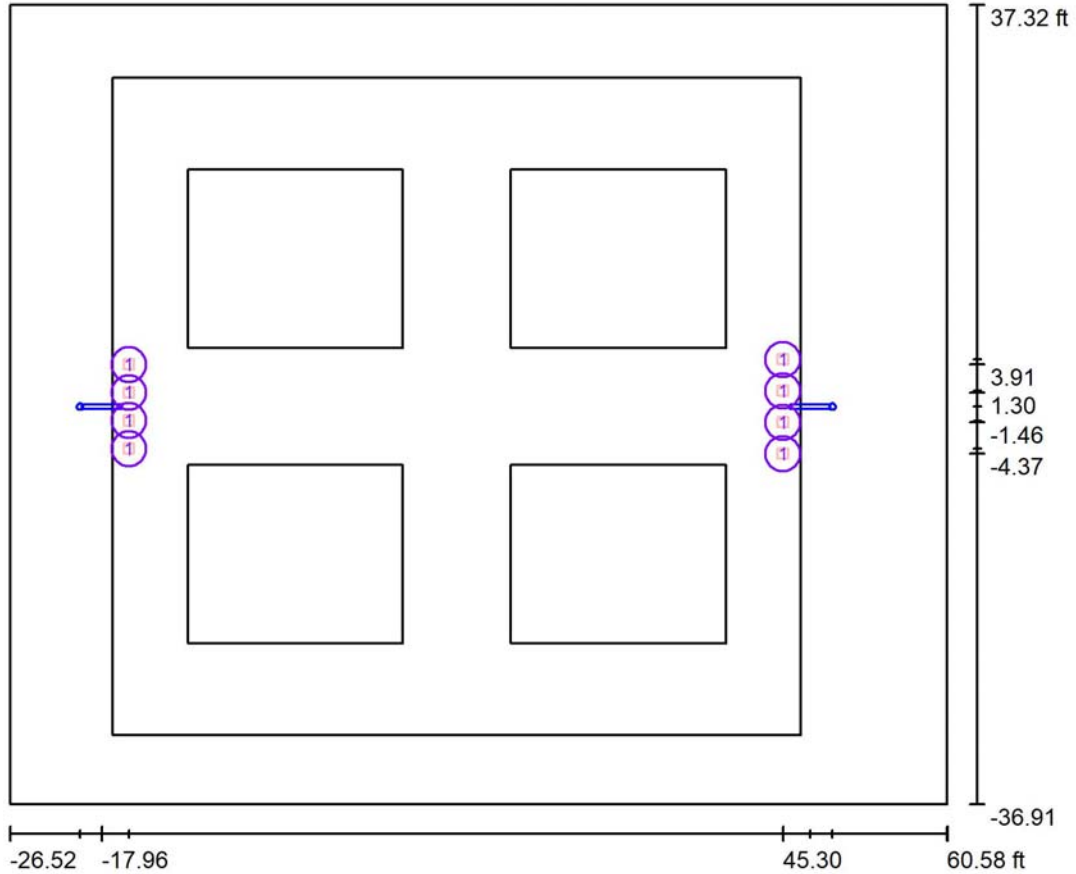


Luminaire classification according to CIE: 100  
CIE flux code: 24 61 95 100 99

Due to missing symmetry properties, no UGR table can be displayed for this luminaire.



**Exterior Scene 1 / Planning data**



Light loss factor: 0.90, ULR (Upward Light Ratio): 0.0%

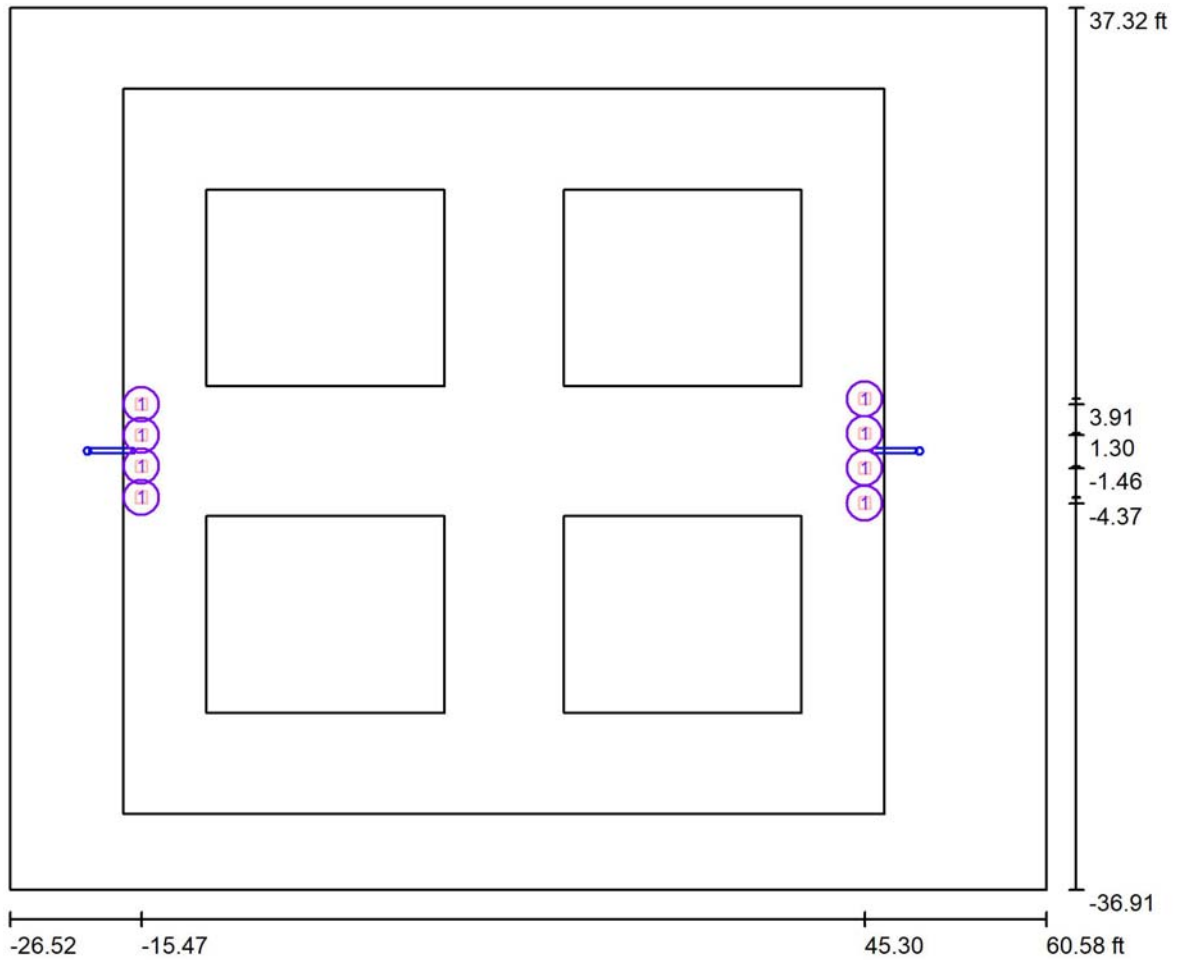
Scale 1:210

**Luminaire Parts List**

No.	Pieces	Designation (Correction Factor)	$\Phi$ (Luminaire) [lm]	$\Phi$ (Lamps) [lm]	P [W]
1	8	AF72XFLB200-T4M1 200W Backlight shielding (1.000)	21032	21219	194.3
Total:			168260	169752	1554.4



**Exterior Scene 1 / Luminaires (layout plan)**



Scale 1 : 190

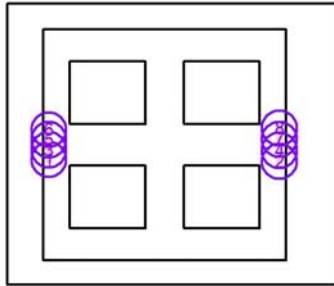
**Luminaire Parts List**

No.	Pieces	Designation
1	8	AF72XFLB200-T4M1 200W Backlight shielding

**Exterior Scene 1 / Luminaires (coordinates list)**

**AF72XFLB200-T4M1 200W Backlight shielding**

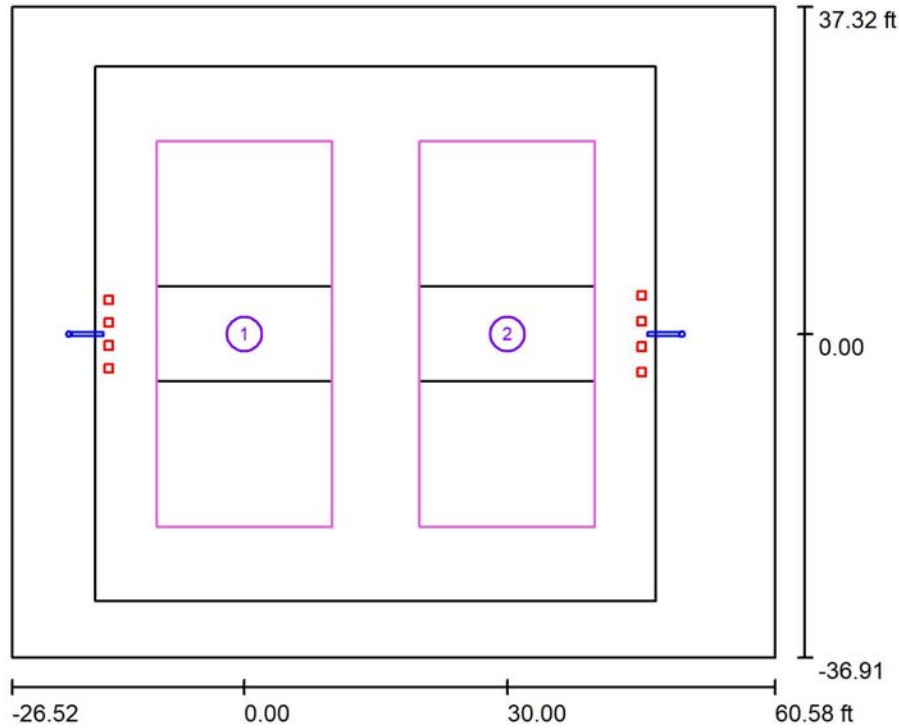
21032 lm, 194.3 W, 1 x 1 x NICHIA 3535 5000K D340 (Correction Factor 1.000).



No.	Position [ft]			Rotation [°]		
	X	Y	Z	X	Y	Z
1	-15.471	-3.909	20.000	0.0	0.0	0.0
2	45.301	-4.372	20.000	0.0	0.0	180.0
3	-15.471	-1.303	20.000	0.0	0.0	0.0
4	45.301	-1.457	20.000	0.0	0.0	180.0
5	-15.471	1.303	20.000	0.0	0.0	0.0
6	-15.471	3.909	20.000	0.0	0.0	0.0
7	45.301	1.457	20.000	0.0	0.0	180.0
8	45.301	4.372	20.000	0.0	0.0	180.0



**Exterior Scene 1 / Calculation surfaces (results overview)**



Scale 1 : 258

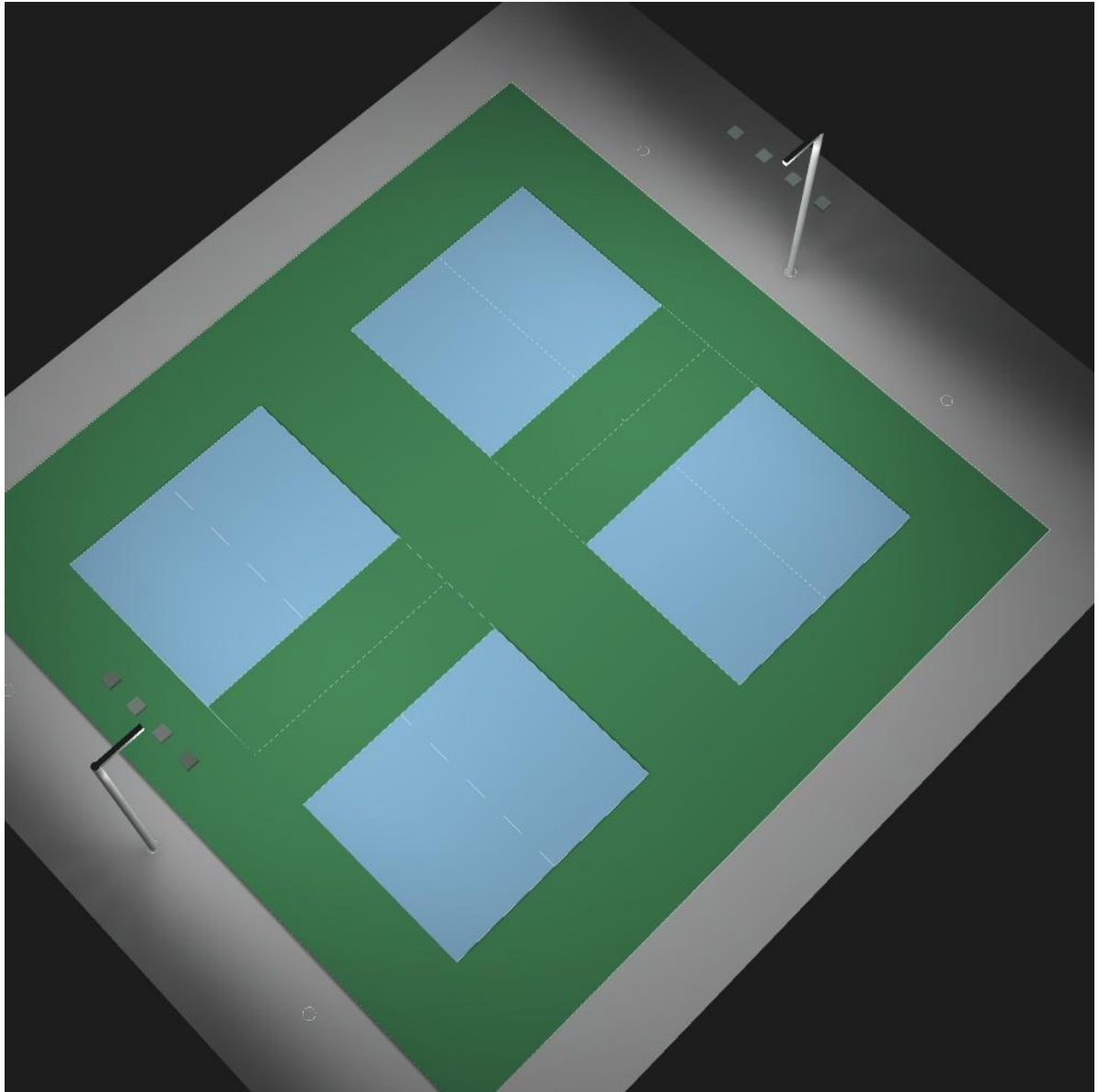
**Calculation Surface List**

No.	Designation	Type	Grid	$E_{av}$ [fc]	$E_{min}$ [fc]	$E_{max}$ [fc]	u0	$E_{min} / E_{max}$
1	Calculation Surface 1	perpendicular	5 x 11	33	22	45	0.691	0.501
2	Calculation Surface 1	perpendicular	5 x 11	33	23	45	0.690	0.504

**Summary of Results**

Type	Quantity	Average [fc]	Min [fc]	Max [fc]	u0	$E_{min} / E_{max}$
perpendicular	2	33	22	45	0.69	0.50

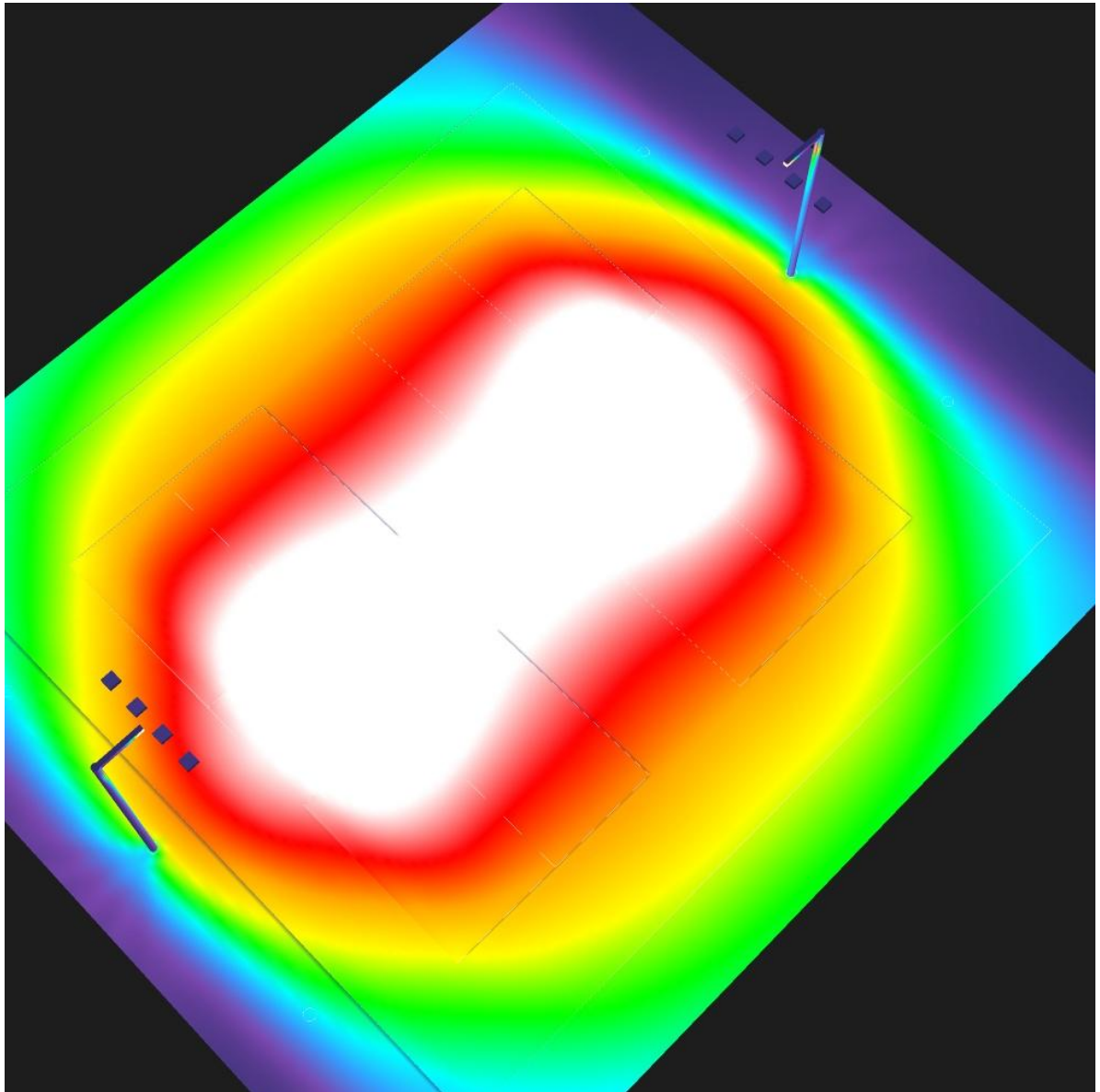
**Exterior Scene 1 / 3D Rendering**





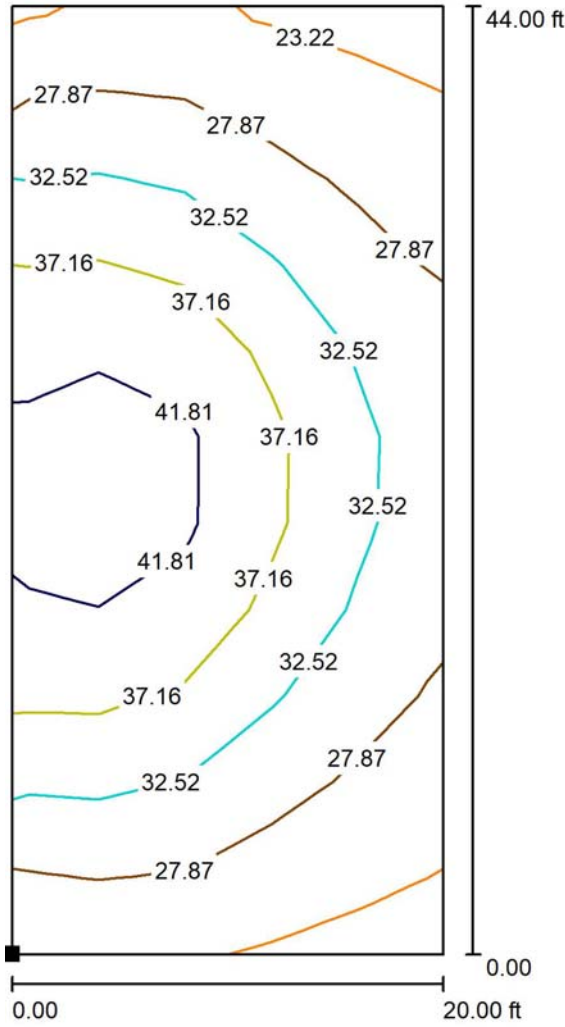


**Exterior Scene 1 / False Color Rendering**



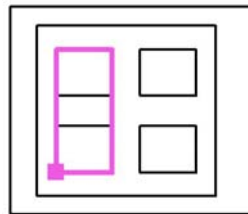
0    3.75    7.50    11.25    15.00    18.75    22.50    26.25    30.00    fc

**Exterior Scene 1 / Calculation Surface 1 / Isolines (E, Perpendicular)**



Values in Footcandles, Scale 1 : 105

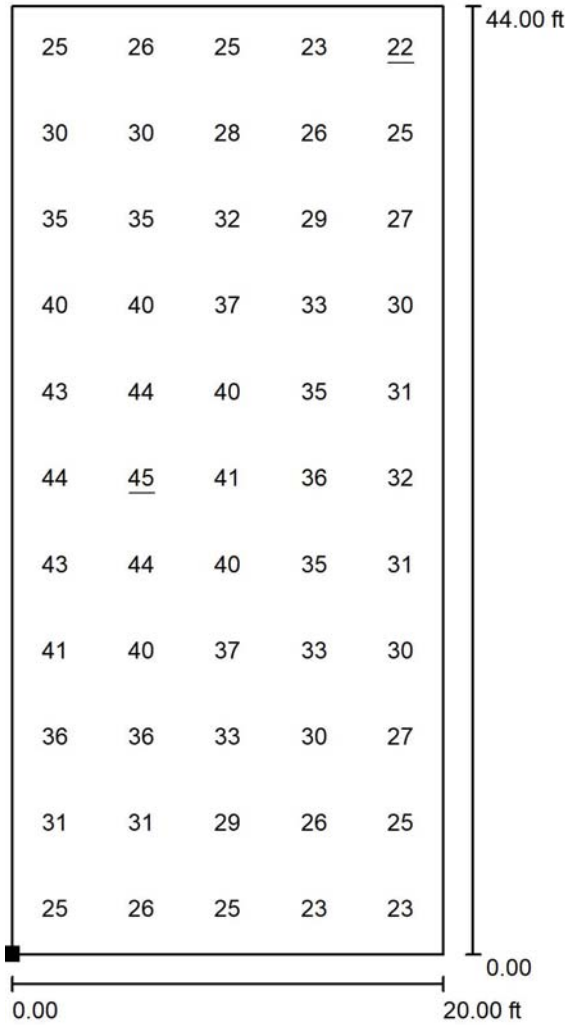
Position of surface in external scene:  
Marked point:  
(-10.000 ft, -22.000 ft, 3.000 ft)



Grid: 5 x 11 Points

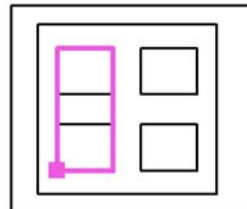
$E_{av}$ [fc]	$E_{min}$ [fc]	$E_{max}$ [fc]	u0	$E_{min} / E_{max}$
33	22	45	0.691	0.501

**Exterior Scene 1 / Calculation Surface 1 / Value Chart (E, Perpendicular)**



Values in Footcandles, Scale 1 : 105

Position of surface in external scene:  
Marked point:  
(-10.000 ft, -22.000 ft, 3.000 ft)



Grid: 5 x 11 Points

$E_{av}$  [fc]  
33

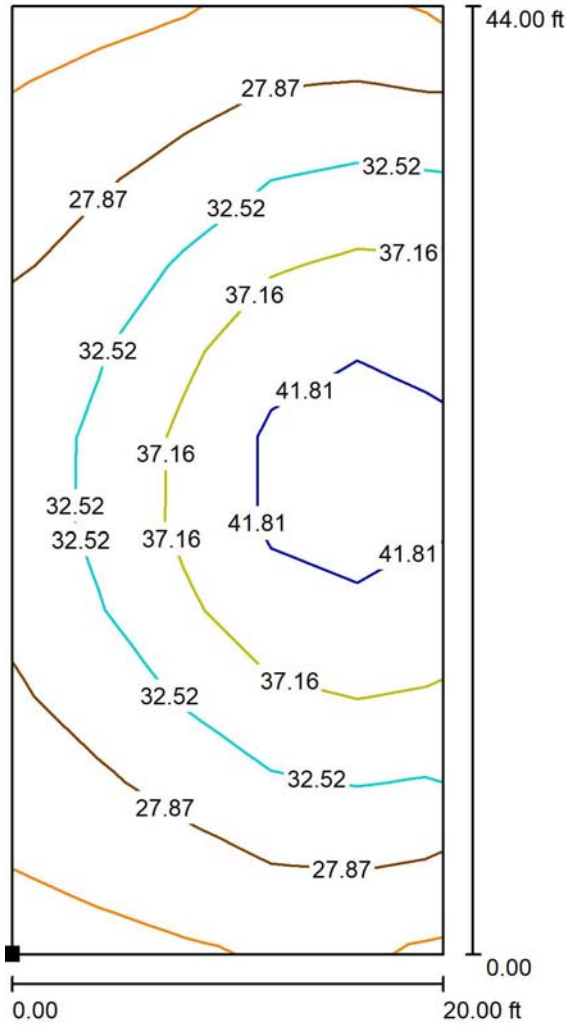
$E_{min}$  [fc]  
22

$E_{max}$  [fc]  
45

$u_0$   
0.691

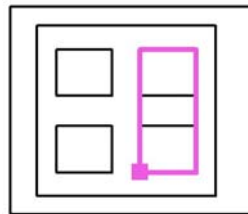
$E_{min} / E_{max}$   
0.501

**Exterior Scene 1 / Calculation Surface 1 / Isolines (E, Perpendicular)**



Values in Footcandles, Scale 1 : 105

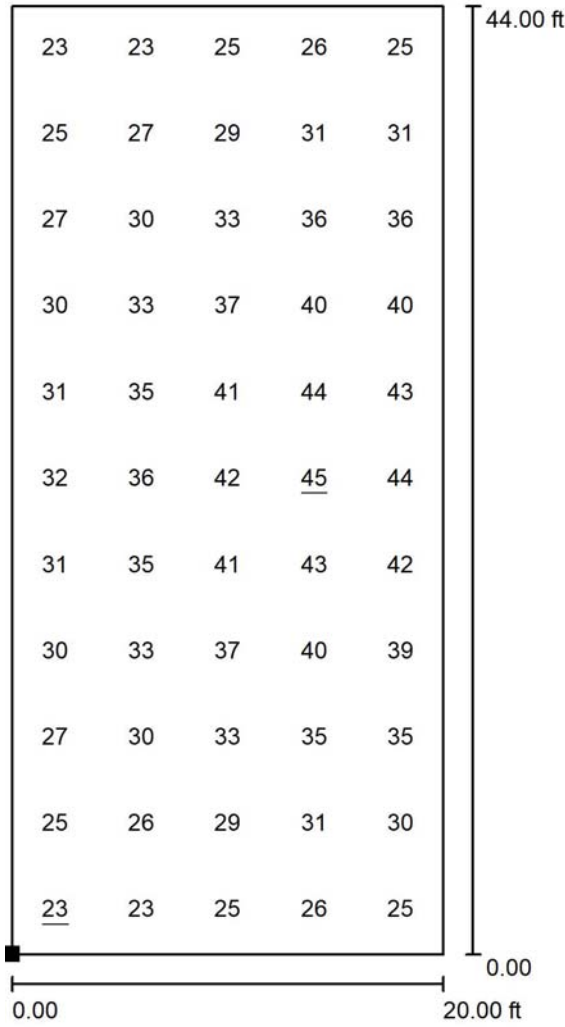
Position of surface in external scene:  
Marked point:  
(20.000 ft, -22.000 ft, 3.000 ft)



Grid: 5 x 11 Points

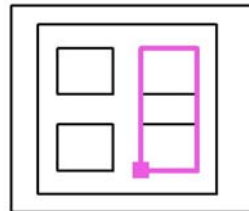
$E_{av}$ [fc]	$E_{min}$ [fc]	$E_{max}$ [fc]	u0	$E_{min} / E_{max}$
33	23	45	0.690	0.504

**Exterior Scene 1 / Calculation Surface 1 / Value Chart (E, Perpendicular)**



Values in Footcandles, Scale 1 : 105

Position of surface in external scene:  
Marked point:  
(20.000 ft, -22.000 ft, 3.000 ft)



Grid: 5 x 11 Points

$E_{av}$ [fc]	$E_{min}$ [fc]	$E_{max}$ [fc]	u0	$E_{min} / E_{max}$
33	23	45	0.690	0.504