

## **Pickleball Court lighting ZM-2018-000628**

The simulation and result is based on an ideal environment, the actual lighting performance may be affected by actual environment. The lighting simulation is for reference only.:

Date: 08 / 28 / 2018



## Table of contents

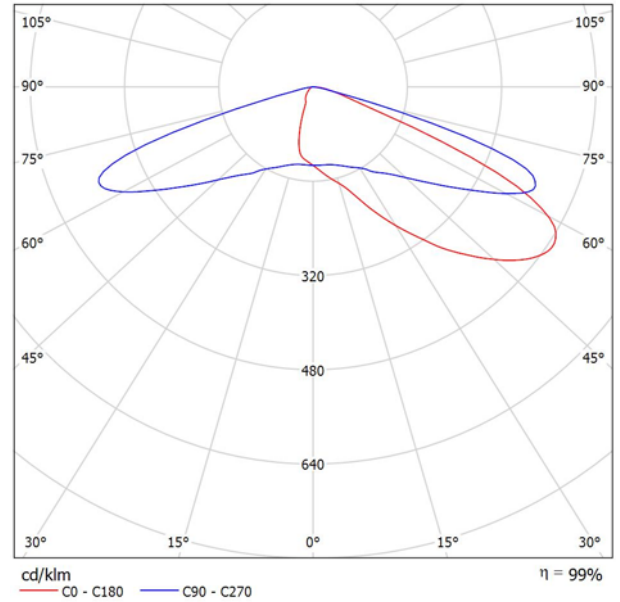
<b>Pickleball Court lighting ZM-2018-000628</b>	
Project Cover	1
Table of contents	2
<b>AF72XFLB240-T4M1 240W Backlight shielding</b>	
Luminaire Data Sheet	3
<b>Exterior Scene 1</b>	
Planning data	4
Luminaires (layout plan)	5
Luminaires (coordinates list)	6
Calculation surfaces (results overview)	7
3D Rendering	8
False Color Rendering	9
<b>Exterior Surfaces</b>	
<b>Calculation Surface 1</b>	
Isolines (E, Perpendicular)	10
Value Chart (E, Perpendicular)	11
<b>Calculation Surface 1</b>	
Isolines (E, Perpendicular)	12
Value Chart (E, Perpendicular)	13



## AF72XFLB240-T4M1 240W Backlight shielding / Luminaire Data Sheet

Luminous emittance 1:

See our luminaire catalog for an image of the luminaire.

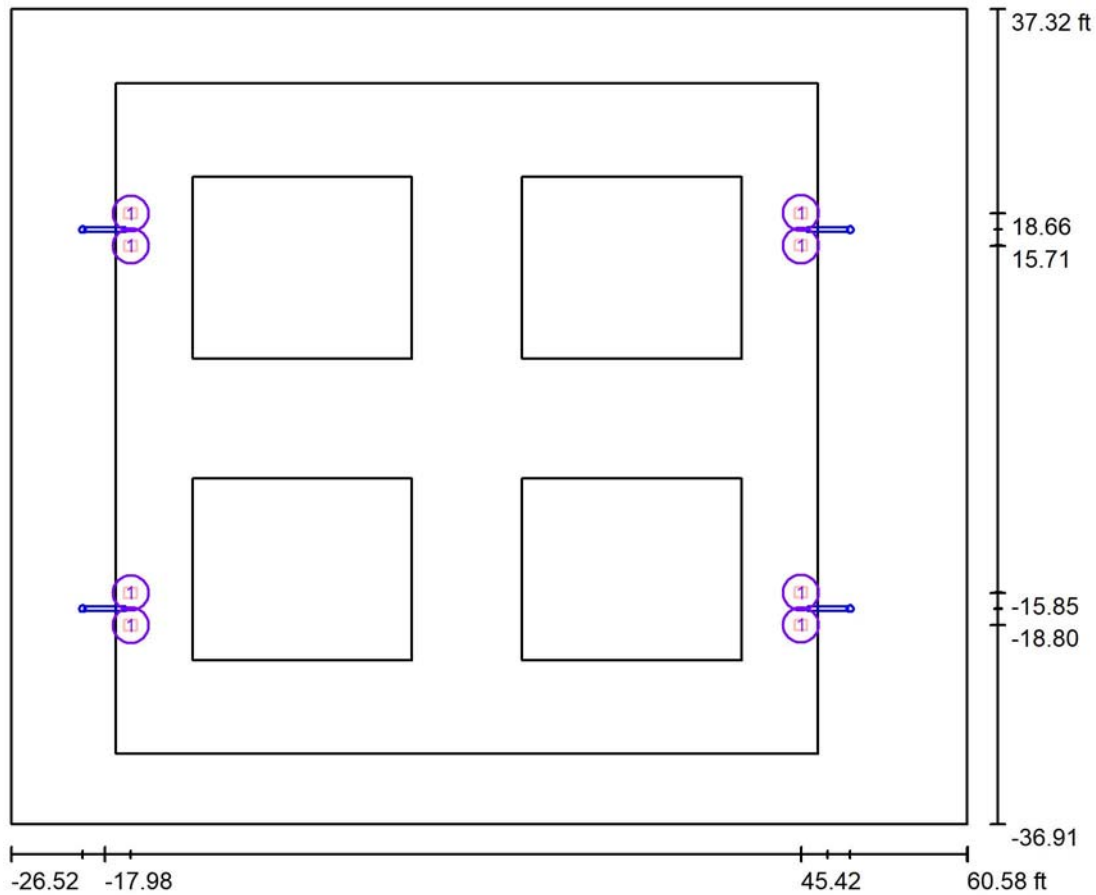


Luminaire classification according to CIE: 100  
CIE flux code: 24 61 95 100 99

Due to missing symmetry properties, no UGR table can be displayed for this luminaire.



**Exterior Scene 1 / Planning data**



Light loss factor: 0.90, ULR (Upward Light Ratio): 0.0%

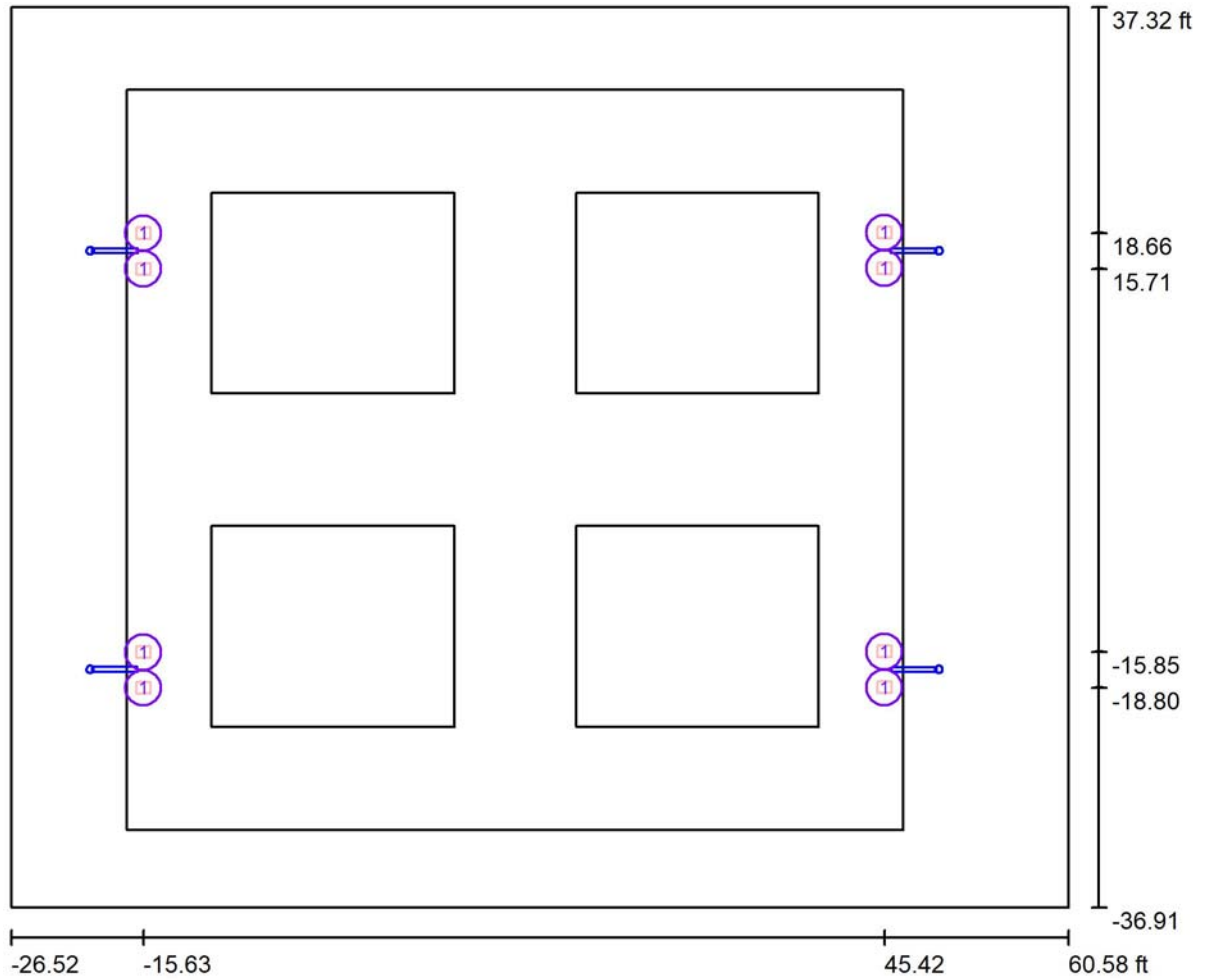
Scale 1:210

**Luminaire Parts List**

No.	Pieces	Designation (Correction Factor)	Φ (Luminaire) [lm]	Φ (Lamps) [lm]	P [W]
1	8	AF72XFLB240-T4M1 240W Backlight shielding (1.000)	25544	25777	232.9
Total:			204354	Total: 206216	1863.2



**Exterior Scene 1 / Luminaires (layout plan)**



Scale 1 : 190

**Luminaire Parts List**

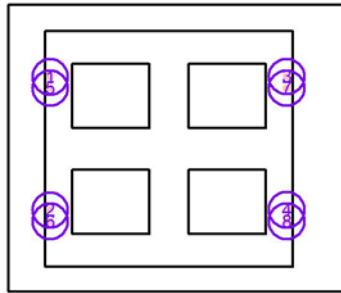
No.	Pieces	Designation
1	8	AF72XFLB240-T4M1 240W Backlight shielding



**Exterior Scene 1 / Luminaires (coordinates list)**

**AF72XFLB240-T4M1 240W Backlight shielding**

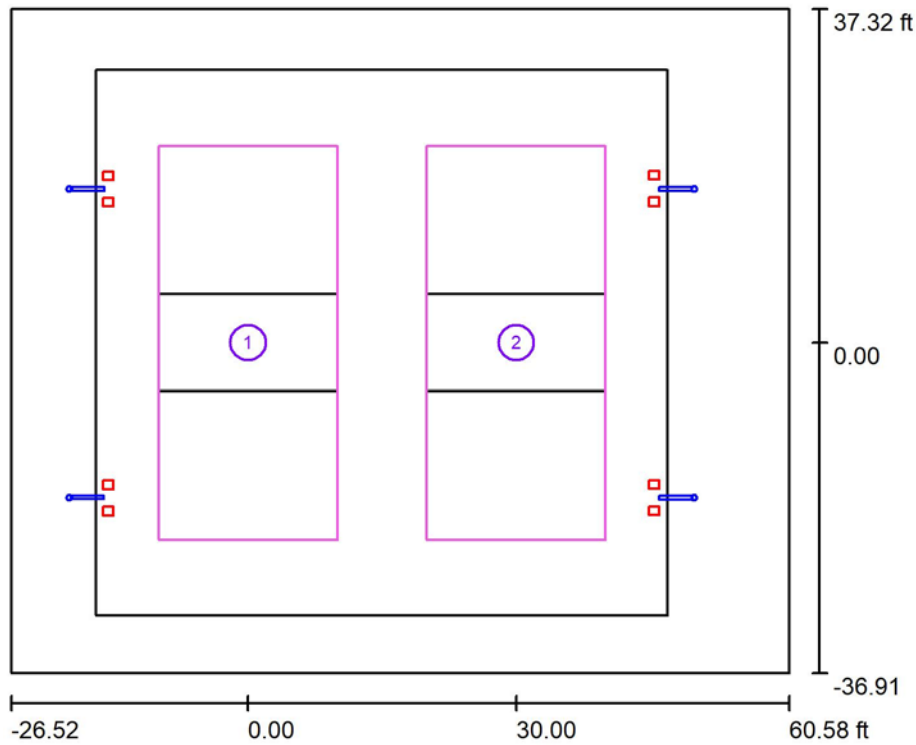
25544 lm, 232.9 W, 1 x 1 x NICHIA 3535 5000K D340 (Correction Factor 1.000).



No.	Position [ft]			Rotation [°]		
	X	Y	Z	X	Y	Z
1	-15.627	18.663	20.000	0.0	0.0	0.0
2	-15.627	-15.848	20.000	0.0	0.0	0.0
3	45.423	18.703	20.000	0.0	0.0	180.0
4	45.423	-15.808	20.000	0.0	0.0	180.0
5	-15.627	15.709	20.000	0.0	0.0	0.0
6	-15.627	-18.802	20.000	0.0	0.0	0.0
7	45.423	15.750	20.000	0.0	0.0	180.0
8	45.423	-18.761	20.000	0.0	0.0	180.0



**Exterior Scene 1 / Calculation surfaces (results overview)**



Scale 1 : 258

**Calculation Surface List**

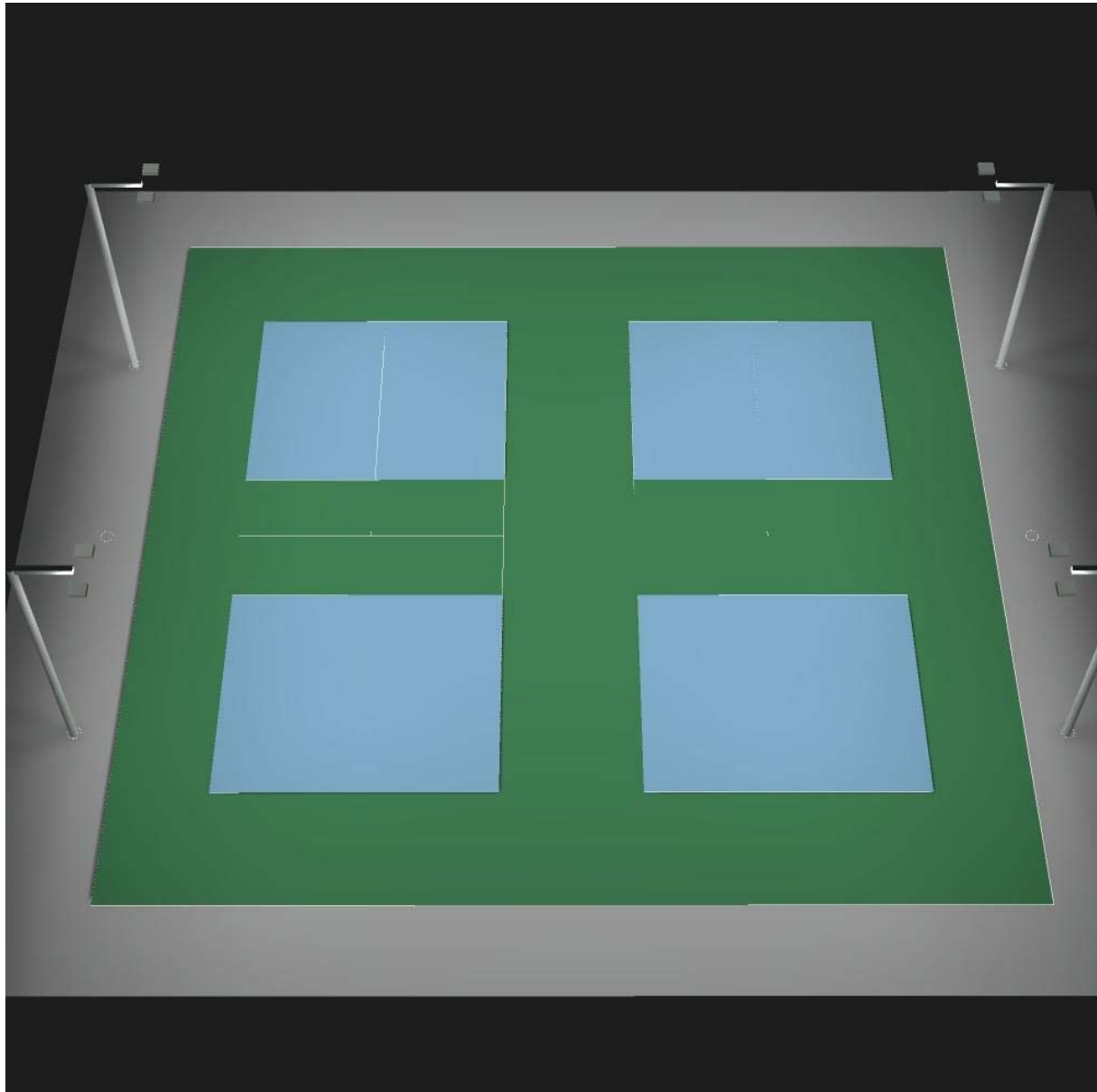
No.	Designation	Type	Grid	$E_{av}$ [fc]	$E_{min}$ [fc]	$E_{max}$ [fc]	u0	$E_{min} / E_{max}$
1	Calculation Surface 1	perpendicular	5 x 11	32	26	36	0.804	0.720
2	Calculation Surface 1	perpendicular	5 x 11	33	26	36	0.803	0.720

**Summary of Results**

Type	Quantity	Average [fc]	Min [fc]	Max [fc]	u0	$E_{min} / E_{max}$
perpendicular	2	33	26	36	0.80	0.72



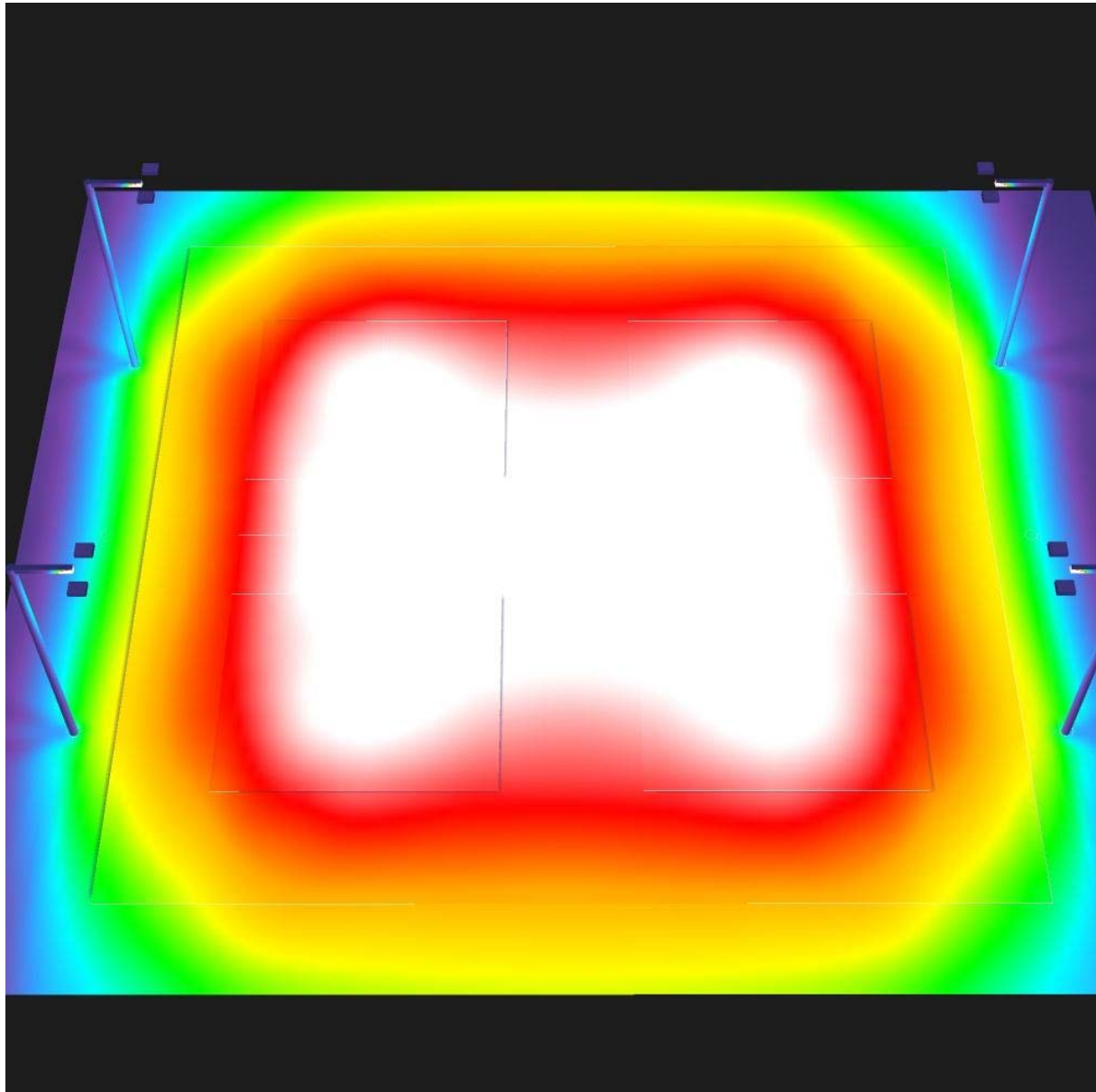
**Exterior Scene 1 / 3D Rendering**







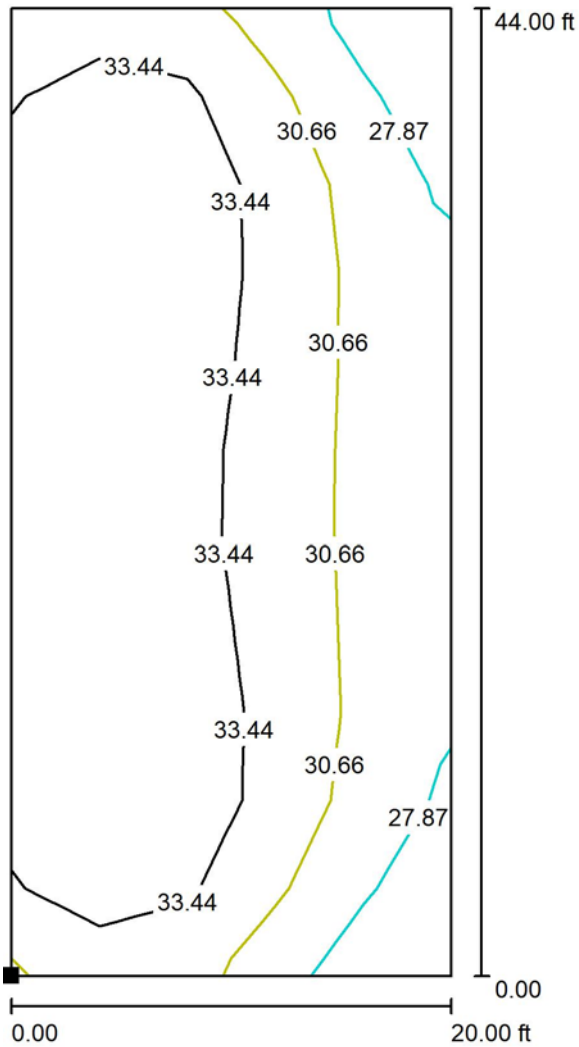
**Exterior Scene 1 / False Color Rendering**



0      3.75      7.50      11.25      15.00      18.75      22.50      26.25      30.00      fc

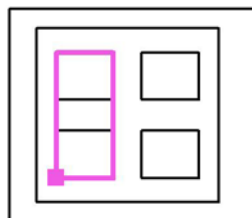


**Exterior Scene 1 / Calculation Surface 1 / Isolines (E, Perpendicular)**



Values in Footcandles, Scale 1 : 105

Position of surface in external scene:  
Marked point:  
(-10.000 ft, -22.000 ft, 3.000 ft)

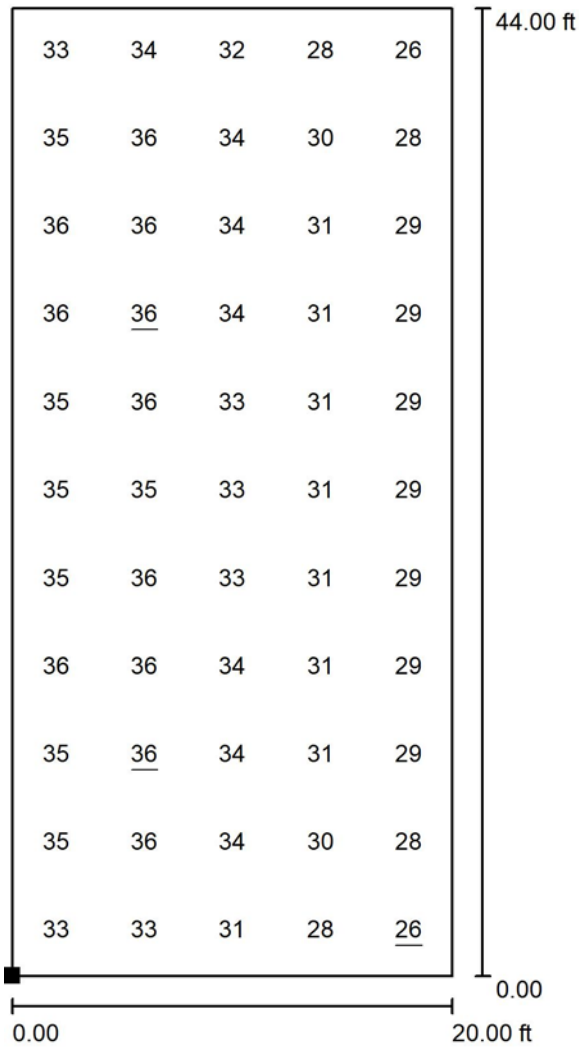


Grid: 5 x 11 Points

$E_{av}$ [fc]	$E_{min}$ [fc]	$E_{max}$ [fc]	u0	$E_{min} / E_{max}$
32	26	36	0.804	0.720

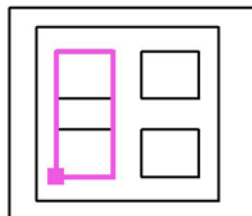


**Exterior Scene 1 / Calculation Surface 1 / Value Chart (E, Perpendicular)**



Values in Footcandles, Scale 1 : 105

Position of surface in external scene:  
Marked point:  
(-10.000 ft, -22.000 ft, 3.000 ft)



Grid: 5 x 11 Points

$E_{av}$  [fc]  
32

$E_{min}$  [fc]  
26

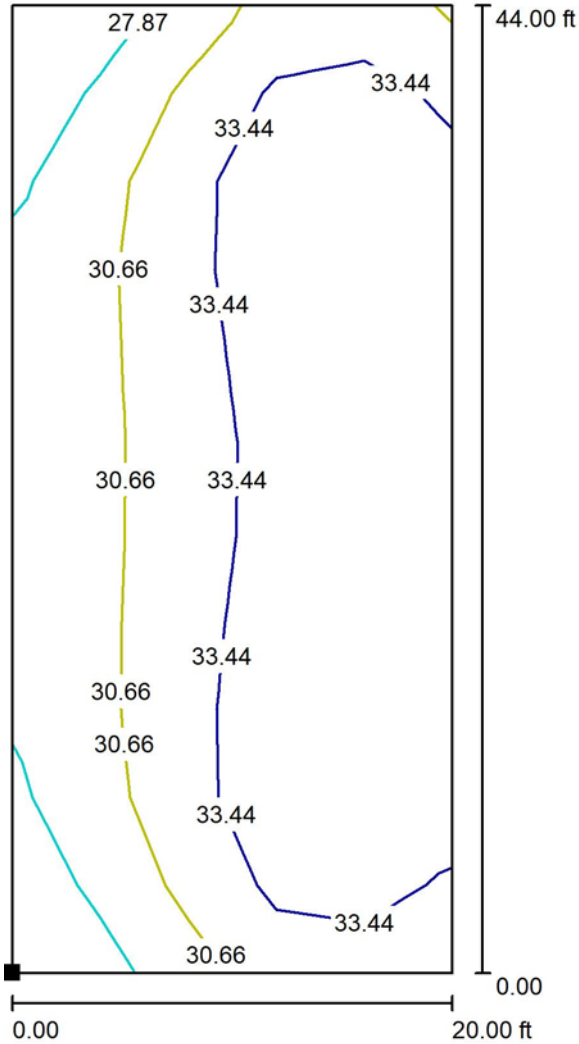
$E_{max}$  [fc]  
36

u0  
0.804

$E_{min} / E_{max}$   
0.720

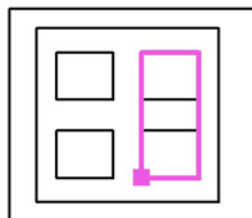


**Exterior Scene 1 / Calculation Surface 1 / Isolines (E, Perpendicular)**



Values in Footcandles, Scale 1 : 105

Position of surface in external scene:  
Marked point:  
(20.000 ft, -22.000 ft, 3.000 ft)

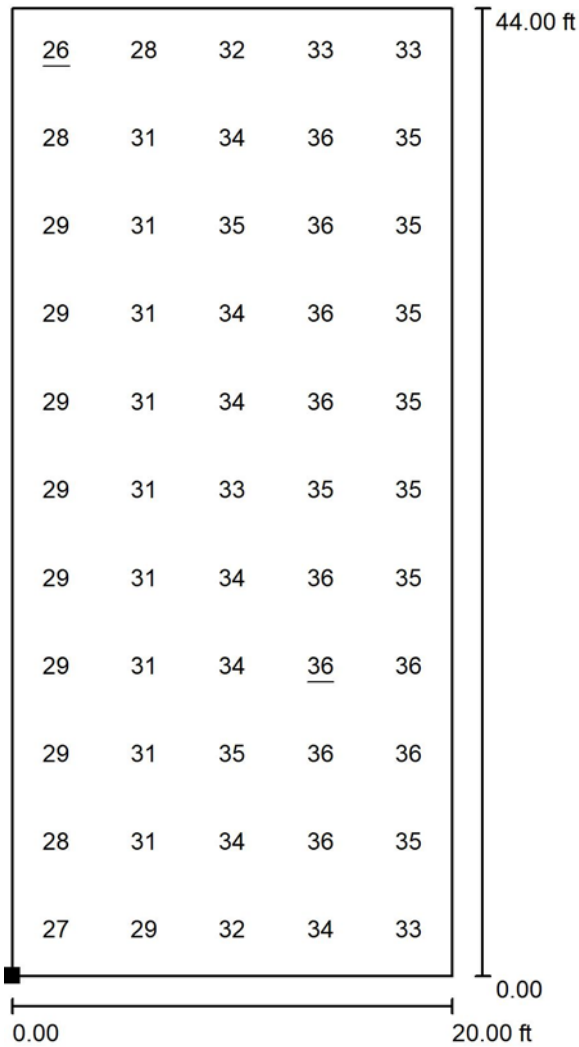


Grid: 5 x 11 Points

$E_{av}$ [fc]	$E_{min}$ [fc]	$E_{max}$ [fc]	u0	$E_{min} / E_{max}$
33	26	36	0.803	0.720

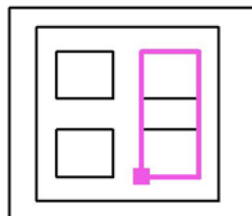


**Exterior Scene 1 / Calculation Surface 1 / Value Chart (E, Perpendicular)**



Values in Footcandles, Scale 1 : 105

Position of surface in external scene:  
Marked point:  
(20.000 ft, -22.000 ft, 3.000 ft)



Grid: 5 x 11 Points

$E_{av}$ [fc]	$E_{min}$ [fc]	$E_{max}$ [fc]	u0	$E_{min} / E_{max}$
33	26	36	0.803	0.720