

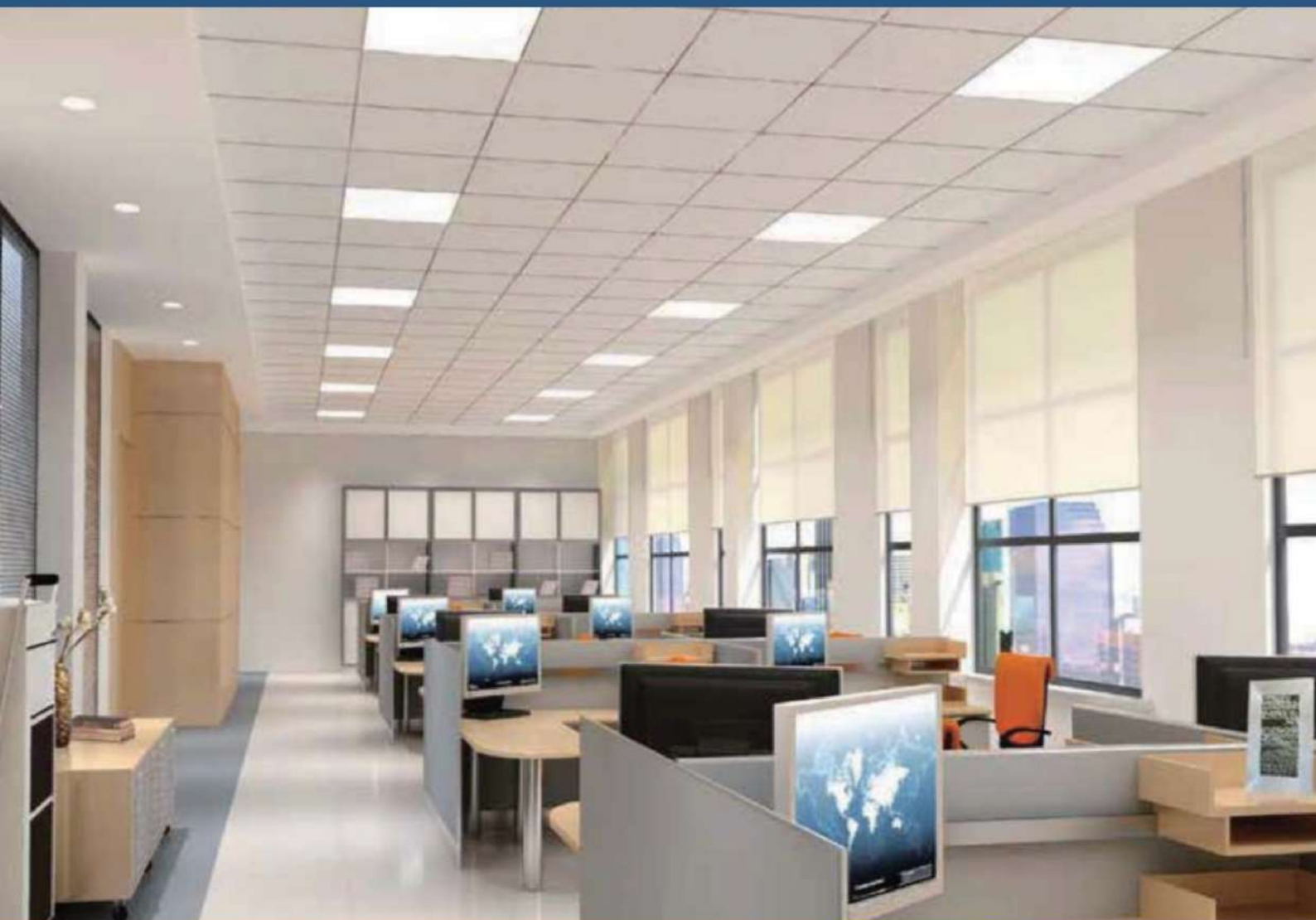
GUIDE



GAYA

INSTALLATION MANUAL

AccessFixtures.com



PH: 800-468-9925
Sales@AccessFixtures.com
AccessFixtures.com

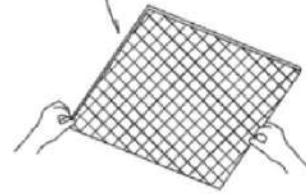
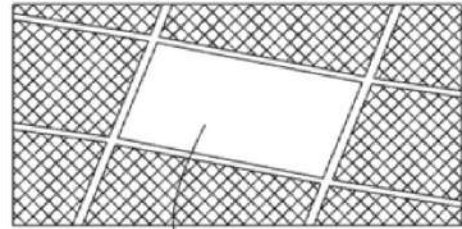


AccessFixtures
High-Performance Lighting Solutions

Installation

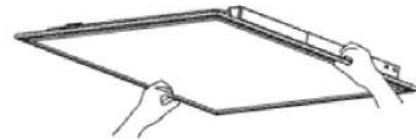
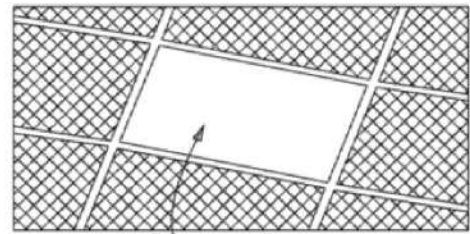
1 Remove

- Remove 2 x 2 panel from ceiling



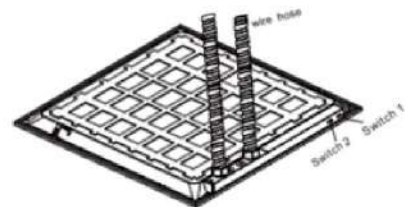
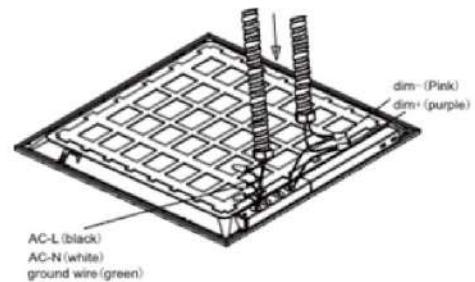
2 Attach

- Attach the LED Panel



3 Connect

- Connect the AC wire of driver at L (Black), N (White), and G (Green)
- If dimming function is needed, it also needs to be connected to both dimmable driver wires; grey and purple



Watt Tunbale: Switch 1
3 different power:
2'2 : 30W 35W 40W
1'4 : 30W 35W 40W
2'4 : 30W 40W 50W

CTTunbale Switch 2[®]
5000K 4000K 3500K



4 Wire Hose

- Ensure wire hose is attached to the panel, then installation is complete.

Note

- The installation and maintenance must be completed by electricians or professionals
- Please cut off the power before installation and maintenance
- The fixture is not allowed to be covered by thermally insulating material
- Please keep away from any corrosive substance
- Keep fixture dry and clean
- Working temperature is -4°F to 104°F, storage temperature -22°F to 140°F.