

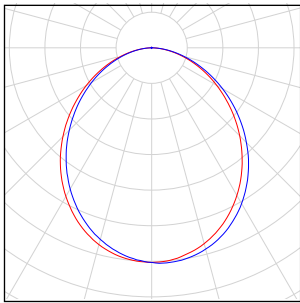
Youth Sanctuary - Average 43 Footcandles

The simulation and result is based on an ideal environment, the actual lighting performance may be affected by actual environment. The lighting simulation is for reference only.

Table of contents

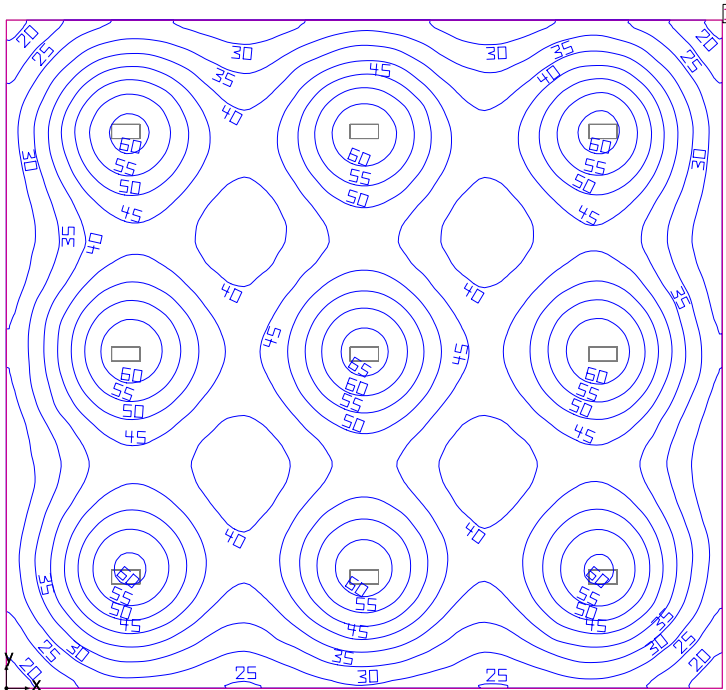
Youth Church	
Luminaire parts list.....	3
Site 1	
Building 1	
Storey 1	
Room 1	
Room summary.....	4
Workplane 1 / Perpendicular illuminance (adaptive).....	5

Youth Church

Quantity	Luminaire (Luminous emittance)		
9	<p>ACCESS FIXTURES - AF87XZY-H2-110W XDZ(3000K) Luminous emittance 1 Fitting: 1x Absolute photometry Luminaire luminous flux: 15193 lm Power: 110.0 W Luminous efficacy: 138.1 lm/W</p> <p>Colourimetric data 1x: CCT 3000 K, CRI 100</p>	<p>See our luminaire catalog for an image of the luminaire.</p>	

Total lamp luminous flux: 136737 lm, Total luminaire luminous flux: 136737 lm, Total Load: 990.0 W, Luminous efficacy: 138.1 lm/W

Room 1



Clearance height: 13.000 ft, Reflection factors: Ceiling 70.0%, Walls 50.0%, Floor 20.0%, Maintenance factor: 0.80

Workplane

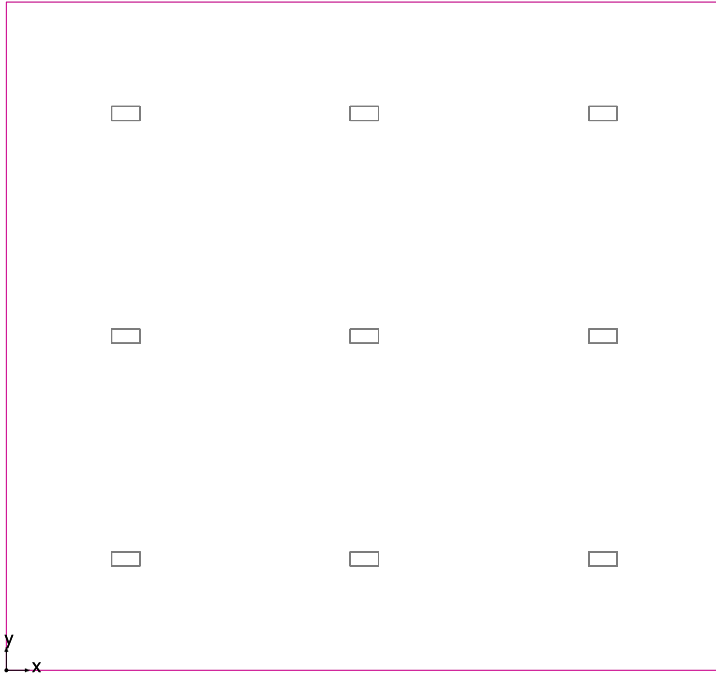
Surface	Result	Average (Target)	Min	Max	Min/average	Min/max
1 Workplane 1	Perpendicular illuminance (adaptive) [fc] Height: 2.625 ft, Wall zone: 0.000 ft	43.11 (≥ 30.00)	17.17	67.59	0.40	0.25

# Luminaire	Φ(Luminaire) [lm]	Power [W]	Luminous efficacy [lm/W]
9 ACCESS FIXTURES - AF87XZY-H2-110W XDZ(3000K)	15193	110.0	138.1
Total via all luminaires	136737	990.0	138.1

Lighting power density: 0.41 W/sq ft = 0.09 W/sq ft/10 fc (Floor area of room 2392.09 sq ft)

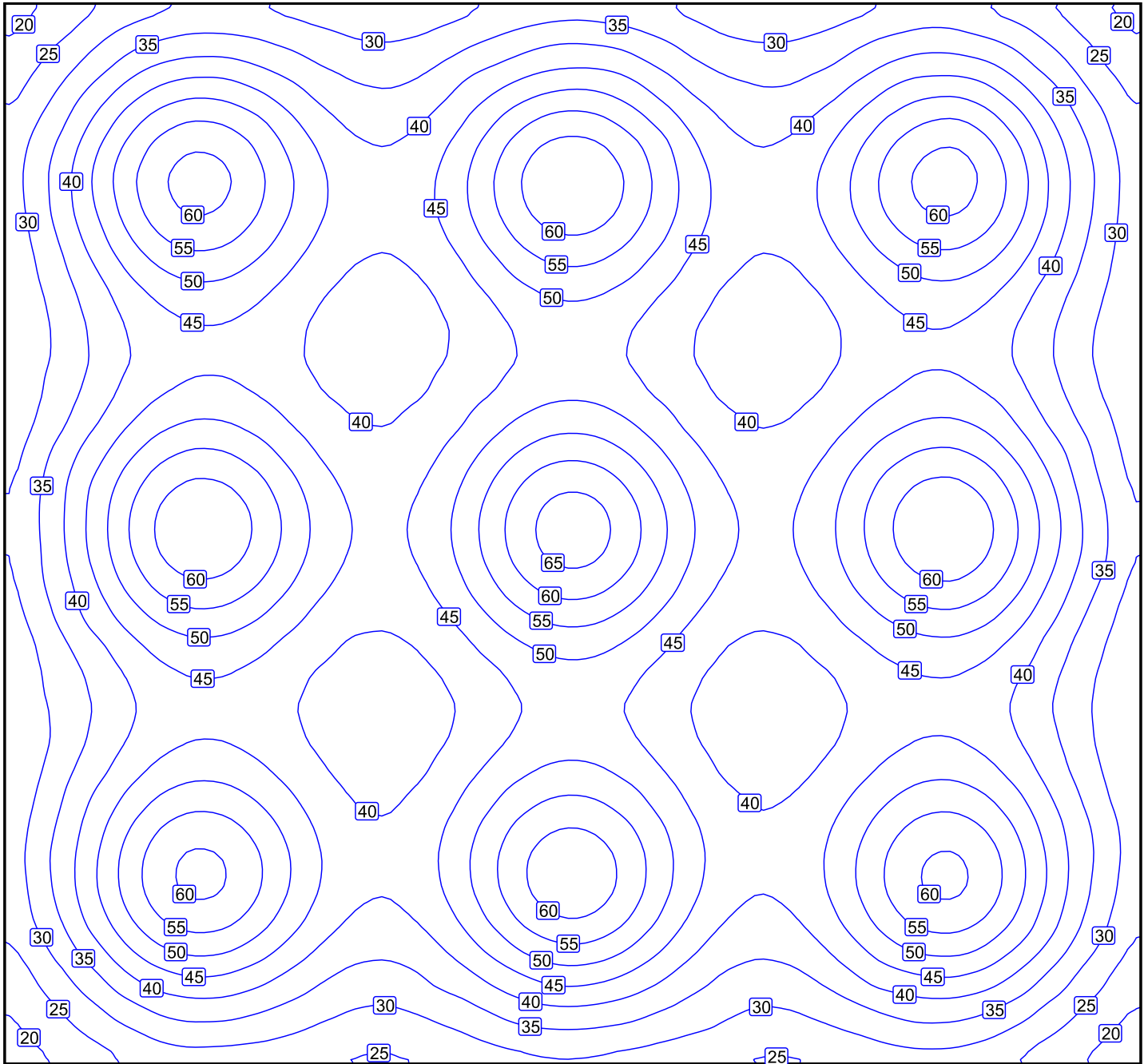
The energy consumption quantities refer to the lights planned for the room without taking into account light scenes and their dimming levels.
Consumption: 1900 kWh/a of maximum 7800 kWh/a

Workplane 1 / Perpendicular illuminance (adaptive)



Workplane 1: Perpendicular illuminance (adaptive) (Surface)
Light scene: Light scene 1
Average: 43.11 fc (Target: ≥ 30.00 fc), Min: 17.17 fc, Max: 67.59 fc, Min/average: 0.40, Min/max: 0.25
Height: 2.625 ft, Wall zone: 0.000 ft

Isolines [fc]



Scale: 1 : 82

Value grid [fc]

+26	+37	+38	+32	+36	+43	+36	+32	+38	+38	+26
+36	+58	+55	+41	+49	(64)	+50	+41	+55	+58	+36
+33	+49	+48	+39	+45	+55	+46	+39	+48	+49	+33
+31	+43	+43	+38	+42	+48	+42	+38	+44	+43	+31
+38	+57	+56	+43	+51	+63	+51	+43	+56	+58	+37
+37	+56	+54	+43	+50	+62	+50	+43	+55	+56	+37
+31	+42	+42	+38	+42	+47	+42	+37	+43	+42	+31
+34	+50	+49	+39	+46	+55	+46	+40	+49	+50	+33
+35	+56	+53	+40	+48	+62	+48	+40	+53	+56	+35
+25	+35	+35	+29	+33	+39	+34	+30	+35	+35	(24)

Scale: 1 : 83