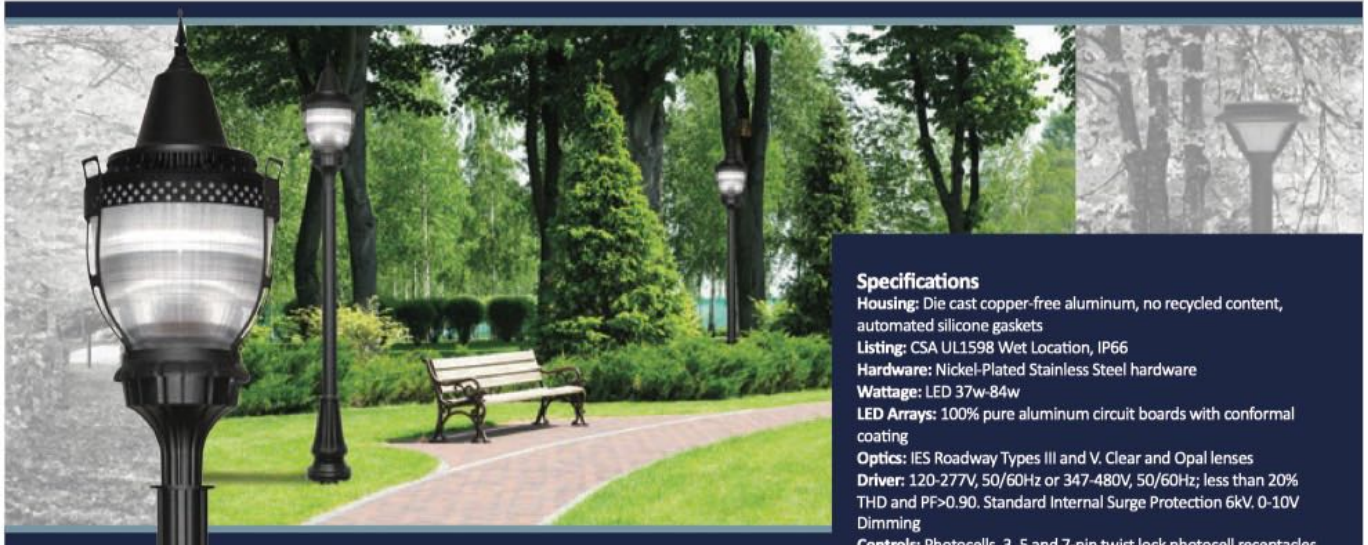


VILA Post Top Luminaires and Poles



Specifications
Housing: Die cast copper-free aluminum, no recycled content, automated silicone gaskets
Listing: CSA UL1598 Wet Location, IP66
Hardware: Nickel-Plated Stainless Steel hardware
Wattage: LED 37w-84w
LED Arrays: 100% pure aluminum circuit boards with conformal coating
Optics: IES Roadway Types III and V. Clear and Opal lenses
Driver: 120-277V, 50/60Hz or 347-480V, 50/60Hz; less than 20% THD and PF>0.90. Standard Internal Surge Protection 6kV. 0-10V Dimming
Controls: Photocells, 3, 5 and 7-pin twist lock photocell receptacles, internal microwave motion sensors

AF33XPB2P
 VILA Post Top
 with
 Decorative
 Band and 3
 Arm Support



AF33XPB2D
 VILA Post Top
 With Decoative Band



AF33XPB2S VILA
 Post Top Standard



AF33XPADAB
 Twin Arm Mount



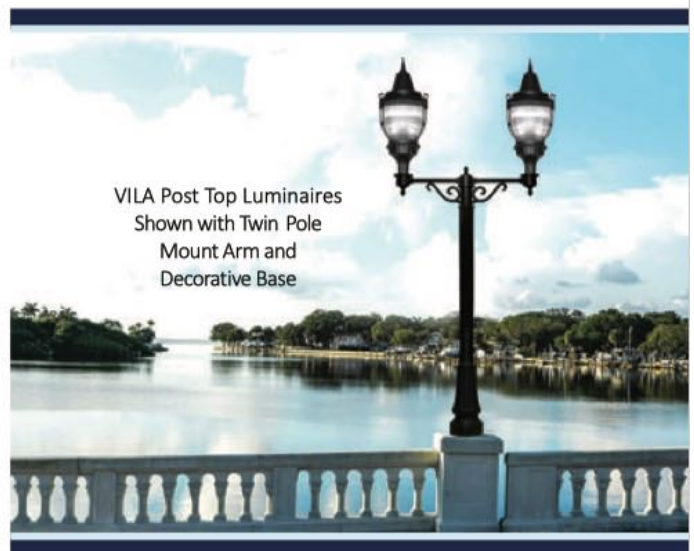
AF33XPB24A4B
 24" Decorative Base



Fleur-de-lis



Spear Finial



VILA Post Top Luminaires
 Shown with Twin Pole
 Mount Arm and
 Decorative Base

VILA EXTREME LIFE LED Post Top Luminaires are available in Type III and Type V distributions. VILA is available with a wall mount, single pole mount or double pole mount. VILA poles are direct burial or bolt mount aluminum poles. VILA bolt down poles are available with a decorative cast aluminum base. Mounting heights of 12 to 20 feet can be used based on preferred light level and uniformity requirements.



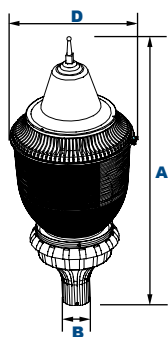
**Decorative Band
3 Arms
Fleur-de-lis Finial**



**Decorative Band
Spear Finial**



**Standard
Spear Finial**



Dimensions

Diameter (D)	16 1/8" (416mm)
Height with Fleur-De-Lis (A)	40" (1016mm)
Height with Spear (A)	39 1/2" (1003mm)
Inner Diameter (B)	3 1/8" (79mm)
Outer Diameter (B)	3 9/16" (84mm)

Specifications and Features:

Housing:

Sand Cast Aluminum Housing, Includes Mounting Hardware. Decorative Spun Aluminum Cap. Finals Have Spun Aluminum Base with Cast Aluminum Fleur-De-Lis or Spear. Stamped and Formed Heavy Duty Aluminum Clamp Bands. Available as Standard Clamp Band, Deluxe Clamp Band with Decorative Band, or Premium Clamp Band with Decorative Band with Three Decorative Supports. Includes Black Oxide Mounting Hardware.

Listing & Ratings:

CSA: Listed for Wet Locations, ANSI/UL 1598, 8750; IP66 Sealed LED Compartment.

Finish:

Textured Black Powdercoat Finish Over a Chromate Conversion Coating. Custom Colors Available Upon Request.

Lens:

Lexalite Lindy Prismatic Acrylic Globes, Type III or Type V, with 9" Neck.

Mounting Options:

Accommodates "P3" 2 1/8" O.D. x 3" Tenons

LED:

Aluminum Boards; Array has IP67 rating

Wattage:

37w Array: 37w, System: 39w; (70-150w HID Equivalent)
65w Array: 65.1w, System: 68w; (150-250w HID Equivalent)
84w Array: 84w, System: 86w; (150-250w HID Equivalent)

Driver:

Electronic Driver, 120-277V, 50/60Hz or 347-480V, 50/60Hz; Less Than 20% THD and PF>0.90. Standard Internal Surge Protection 6kV. 0-10V Dimming Standard for a Dimming Range of 100% to 10%; Dimming Source Current is 150 Microamps.

Controls:

Fixtures Ordered with Factory-Installed Photocell or Motion Sensor Controls are Internally Wired for Switching and/or 1-10V Dimming Within the Housing. Remote Direct Wired Interface of 1-10V Dimming is Not Implied and May Not Be Available, Please Consult Factory. Fixtures are Tested with Various Controls and May Not Function Properly With Controls Supplied By Others. Fixtures are NOT Designed for Use with Line Voltage Dimmers.

Warranty:

5-Year Warranty for -40°C to +50°C Environment.

Order Information Example:

PB2QP3FQF1X84U4KBSF

Model	Globe	Finial	Optics	Wattage	Driver	CCT	Color	Options
AF33XPB2S = VILA Standard Post Top AF33XPB2D = VILA Decorative Band Post Top AF33XPB2P = VILA Band and Arms Post Top	3 =Type III 5 =Type V	F =Fleur-de-lis S =Spear	QF =Type V	1X37 =37w 1X65 =65w 1X84 =84w	U =120-277V H =347-480V	3K =3000K* 4K =4000K 5K =5000K *37w & 84w Only	B =Black C =Custom (Consult Factory)	SF =Single Fuse (120-277V Only) DF =Double Fuse (120-277V Only) S2 =Microwave Sensor with Dimming for Mounting Heights of 8 to 40' (120-277V Only) S4 =Microwave On/Off Motion Sensor for Mounting Heights of 8' to 19', (120-277V Only)

Project Information:

Project Name: _____ Fixture Type: _____

Complete Catalog #: _____ Date: _____

Comments: _____

Certification & Listings:



Accessories & Replacement Parts:

Mounting Accessories (Order Separately, Field Installed)



AF33XPWASAB

AF33XPADAB

PADAB Dual Head Decorative Pole Arm, Aluminum with Black Powdercoat Finish, Fits 3" Tenon, Includes Stainless Steel Hardware. Accepts 3" Diameter Fitters. 13" High x 43" Overall Width.

PWASAB Single Decorative Wall Mount Bracket, Aluminum with Black Powdercoat Finish, Includes Stainless Steel Hardware. Accepts 3" Diameter Fitters. 10" High x 15" Overall Length.

PFNR9 9" Neck Ring. Used to Prevent Neck Cracking Caused by Over-Tightening Screws During Installation.



AF33XPFN9

AF33XPFINDLB

AF33XPFINSPB



AF33XP17117

AF33XP17123

Replacement Parts (Order Separately, Field Installed)

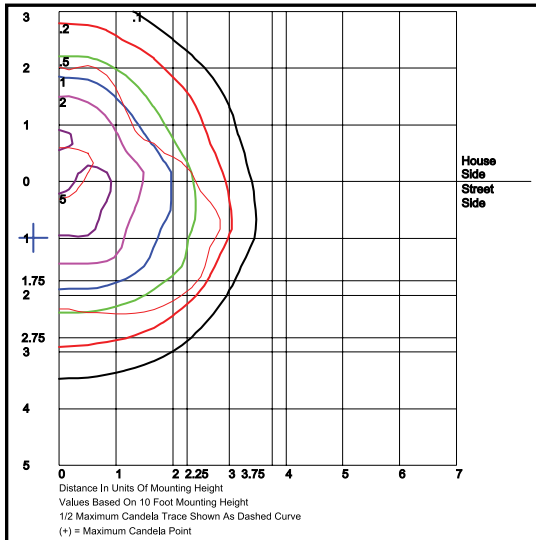
PFINDLB Decorative Fleur-de-lis Finial with Spun Aluminum Base and Cast Aluminum Finial. Black Powdercoat Finish, 1/4" IP (1/2" OD) Threaded Mounting Rod.

PFINSPEB Decorative Spear Finial with Spun Aluminum Base and Cast Aluminum Finial. Black Powdercoat Finish, 1/4" IP (1/2" OD) Threaded Mounting Rod.

P17117 Internal Microwave Sensor with Dimming for Mounting Heights of 8 to 40'. 120-277VAC, 50/60Hz

P17123 Internally Mounted Microwave On/Off Motion Sensor for Mounting Heights of 8' to 19', 120-277VAC, 50/60Hz

Photometric Data



AF33XPB2QD3FQF1X84U4K

Type III

Grid in MH

MH=10 Feet

EPA (Effective Projected Area)

Model	Gross EPA	Drag EPA	Net EPA
PB2Q Models w/ Fitter	2.44	1.22	1.59
PADAB Dual Arm	1.42	0.71	0.92

Gross EPA - Square Feet of Vertical Plane Surface

Drag EPA - Gross EPA Adjusted for Drag Factor (.5)

NET EPA - Drag EPA x Safety Factor of 1.3

EPA's ARE APPROXIMATE, SPECIFIC TO LOCATION AND LOCAL CODES. CONSULT ENGINEER FOR SPECIFIC APPLICATION

Photometric Performance

LED Board Watts	Drive Current (mA)	Input Watts	Optics	5000 CCT 80 CRI					4000 CCT 80 CRI				
				Lumens	LPW	B	U	G	Lumens	LPW	B	U	G
LED 84w	525	86	Type V (Standard PB2Q)	6,605	77	2	5	2	6,357	74	2	4	2
			Type III (Deluxe PB2Q)	5,914	69	2	4	2	5,411	63	2	3	2

4" Decorative Aluminum Poles



VILA Decorative Round Aluminum poles are built from extruded fluted 11 Gauge aluminum tubing and are offered as direct burial or with a high-strength die cast aluminum base. A pole top plate with a 3" vertical tenon is provided.

Specifications and Features:

Pole Specifications:

The Pole Shaft is One-Piece Extruded Fluted .120 (11 Gauge) Aluminum with a 4" O.D. in Direct Burial and Anchor Base Styles. The Anchor Base is Die Cast Aluminum Welded to the Shaft.

Finish:

Textured Architectural Black Powdercoat Finish, Baked to Ensure Maximum Paint Adhesion, Hardness and Durability.

Anchor Bolts:

Set of Four 3/4" x 18" Anchor Bolts are Included.

Hand Hole:

2 1/4" Diameter Hand Hole with Gasketed Cover with Stainless Steel Bolt.

Base Cover

Optional Square Formed and Riveted Aluminum Cover or Decorative Two-Piece Wrap-Around Cast Aluminum Base Available (Sold Separately)

Mounting:

Includes Removable 3" Aluminum Reducing Tenon with Black Powdercoat Finish and Stainless Steel Hardware.

Order Information Example:

PARF422DBBLAB

Model	Shaft/Height/Style	Color	Options
AF33XPARF = Fluted Aluminum Extruded Pole	416AB=16' Anchor Base Pole 422DB=22' Direct Burial Pole	B=Black	(Leave Blank)=No Options LAB=Less Anchor Bolts (2)

Project Information:

Project Name: Fixture Type:

Complete Catalog #: Date:

Comments:

Notes:

- All poles include anchor bolts standard.
- Poles can be cut to custom lengths. Consult factory.

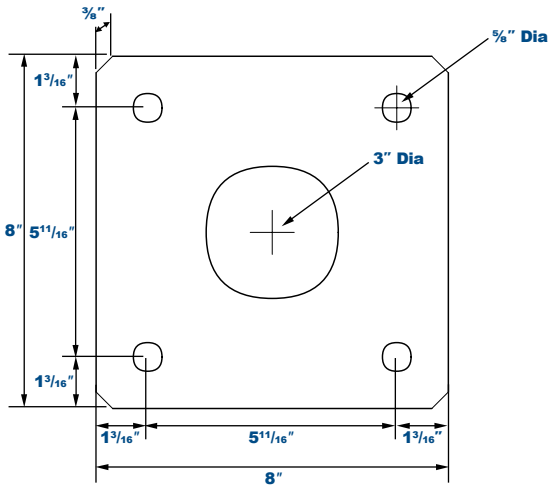
Wind Loading and Dimensional Data:

Pole Description		80 MPH	90 MPH	100 MPH	110 MPH	120 MPH	130 MPH	140 MPH	150 MPH	160 MPH	170 MPH	180 MPH	200 MPH
Shaft Size & Wall Thickness	Mounting Height	Max EPA (SQ FT)	Max EPA (SQ FT)	Max EPA (SQ FT)	Max EPA (SQ FT)	Max EPA (SQ FT)	Max EPA (SQ FT)	Max EPA (SQ FT)	Max EPA (SQ FT)	Max EPA (SQ FT)	Max EPA (SQ FT)	Max EPA (SQ FT)	Max EPA (SQ FT)
AF33XPARF	12'	24.20	19.20	14.80	11.80	10.95	9.06	7.58	6.37	5.38	4.57	3.88	0.65
	14'	19.40	15.40	11.60	9.20	8.61	7.02	5.78	4.76	3.93	3.25	2.67	-
	16'	15.00	12.00	8.90	6.93	6.64	5.31	4.27	3.41	2.70	2.14	1.64	-

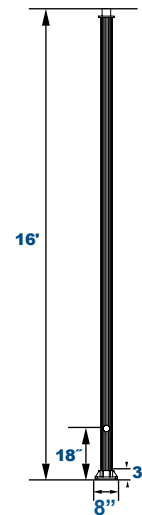
NOTES:

1. Maximum EPA (Effective Projected Area) based on "C" Exposure.
2. EPAs are approximate, specific to location and local codes. Consult engineer for specific application.
3. Allowable EPA Weight Load (LBS): To determine maximum pole loading weight, multiply allowable EPA by 30 LBS.
Example: AF33XPARF 16' pole in 120 mph zone = 199.2 LBS (6.64 x 30)
4. Variations from sizes above are available upon inquiry at the factory.
5. Satisfactory performance of poles is dependent upon the pole being properly attached to a supporting foundation of adequate design.

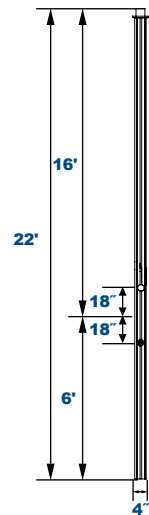
Pole Data:



Shaft Base Size	Bolt Circle A	Base Size B	Base Thickness C	Anchor Bolt Size
AF33XPARF4	8" (203mm)	8" (203mm)	3/4" (19mm)	5/8" x 18"



AF33XPARF416ABB



AF33XPARF422DDB

4" Decorative Aluminum Pole Mounting Options (order separately, field installed.)

Dual Mounting Arm: Black Finish, Accepts 3" Diameter Fitters, Fits 3" Tenon



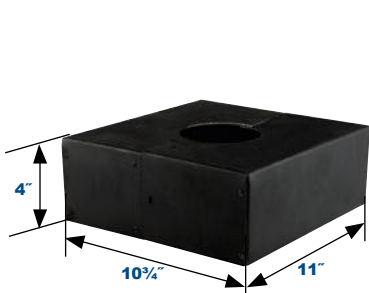
Dual Head Decorative Pole Arm
AF33XPADAB

Wall Mounting Bracket: Black Finish, Accepts 3" Diameter Fitters



Single Decorative Wall Mount Bracket
AF33XPWASAB

Bases:



AF33XPARF4BCB



AF33XPB24A4B

Replacement Parts (Order Separately, Field Installed)

PARF4BCB Square Cover for 4" Pole, Black Finish

PB24A4B Two-Piece Base for 4" Pole, Black Finish

Specifications subject to change without notice. Rev. 012320