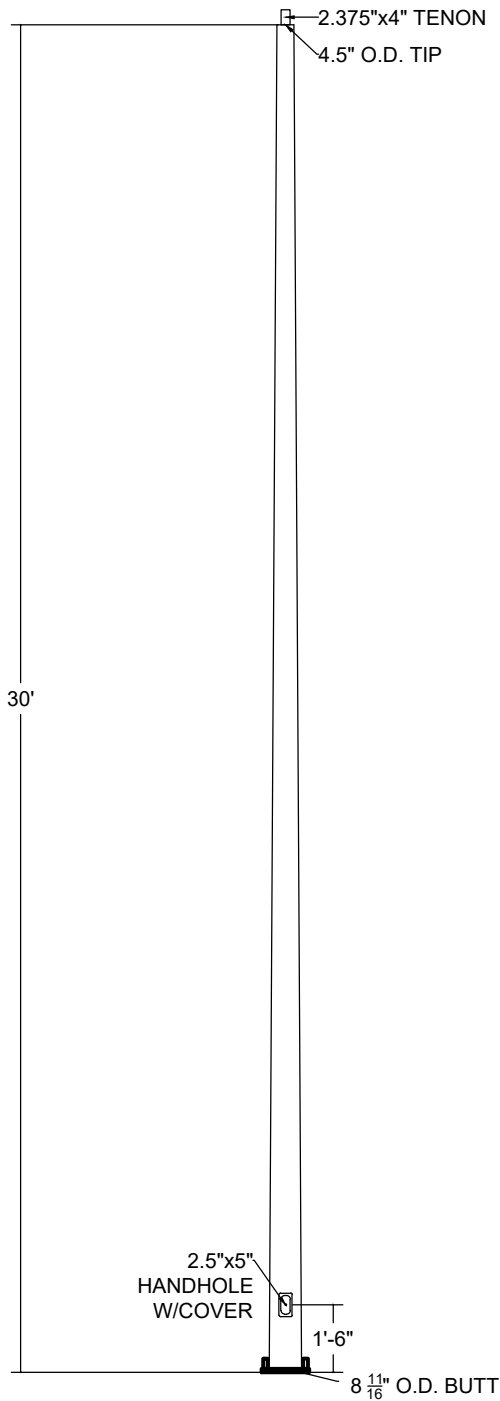
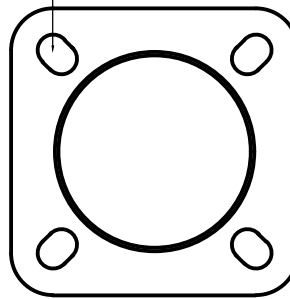


NOTES:



SPACED ON 11.00" DIA.
TO 12.00" DIA B.C. FOR 1.25" BOLTS



8" ANCHOR BASE

FILAMENT WOUND SECTIONAL COMPOSITE SHAFT CONSISTING OF CONTINUOUS FIBERGLASS ROVING COMBINED WITH THERMOSETTING POLYESTER RESIN WOUND IN LOW ANGLE HELICAL AND HIGH ANGLE HOOPS PROVIDING FOR MAXIMUM RESISTANCE TO DEFLECTION AND SHEAR. POLE FINISH IS A 10-15 ML THICK POLYESTER FINISHING RESIN. ANCHOR BASE POLE ASTM 4923 CLASS 2 (POLE TOP DEFLECTION SHALL NOT EXCEED 15% OF THE ABOVE HEIGHT @ MAX WIND LOADING AND MAX FIXTURE WEIGHT) DESIGN CRITERIA PER AASHTO LTS-F-2013 AND ANSI C136.20-2012 WITH A MIN SAFETY FACTOR OF 2.0. EMBEDMENT BASED ON MINIMUM DEPTH RECOMMENDED BY ANSI C136.2 SECTION 5.32 TABLE 1

CATALOG# AF82XAS30FSN2	
EPA 8.0	COLOR Bronze
WINDZONE 90 MPH	FINISH Natural
BUILD Standard	