

SPEC SHEET

# CONA

LED Bollard Light



AccessFixtures.com

## 1 Durable Construction:

CONA is CSA and IP65 rated against water jets, features a vandal-resistant lens, and an extruded aluminum housing that provides maximum life and durability.

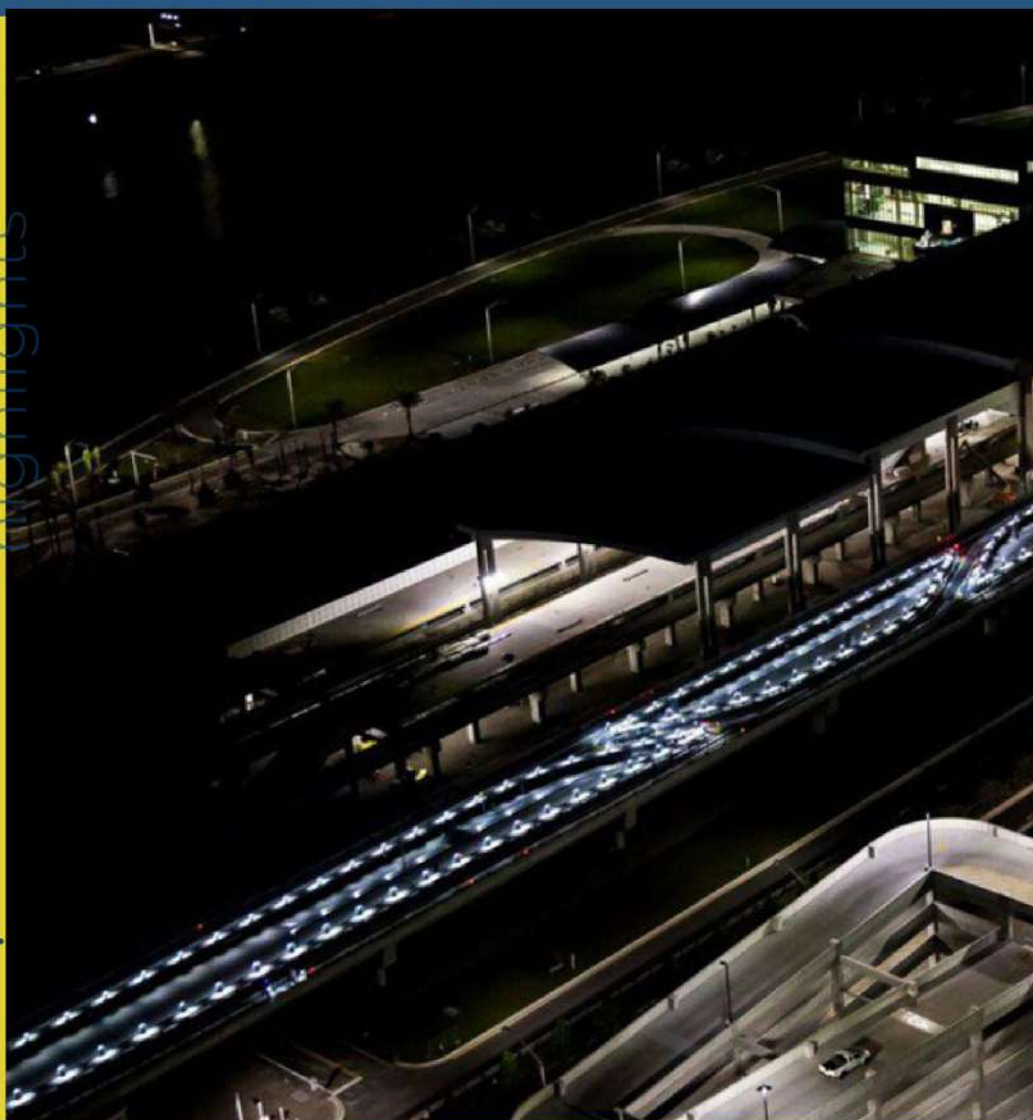
## 2 EXTREME-LIFE:

CONA features EXTREME-LIFE L70 @ 147,000 hours, providing years of virtually maintenance-free performance.

## 3 Cone Reflector:

This bollard light reflects light down and around the unit in a 360-degree pattern, maximizing efficiency.

highlights



PH: 800-468-9925  
Sales@AccessFixtures.com  
AccessFixtures.com



AccessFixtures  
High-Performance Lighting Solutions



# AccessFixtures

High-Performance Lighting Solutions

## CONA OPTIONS

<b>Light Source</b>	LED
<b>Kelvin</b>	3000K, 4000k, 5000k, 590nm Amber
<b>Watts</b>	11w, 17w, 24w
<b>Available Finishes</b>	Bronze, Black, Custom RAL
<b>Housing</b>	Extruded Aluminum Housing, Stainless Steel
<b>Mounting</b>	Mounting Kit with 8" Zinc-Plated Anchor Bolts, Included.
<b>Lumens</b>	Up to 2,447
<b>Height</b>	42" [Standard], 36", 30"
<b>Lens</b>	Clear UV-Stabilized Polycarbonate or Opal UV-Stabilized
<b>Driver</b>	Electronic Driver, 120-277V or 347, 50/60Hz
<b>Finish</b>	Textured Bronze or Black Powdercoat Finish Over a Chromate Conversion Coating
<b>Listings</b>	CSA, IP65, ANSI/UL 1598, 8750;
<b>Voltage</b>	120-277v, 347 [17w only]
<b>Warranty</b>	5-year limited warranty

PH: 800-468-9925  
Sales@AccessFixtures.com  
AccessFixtures.com

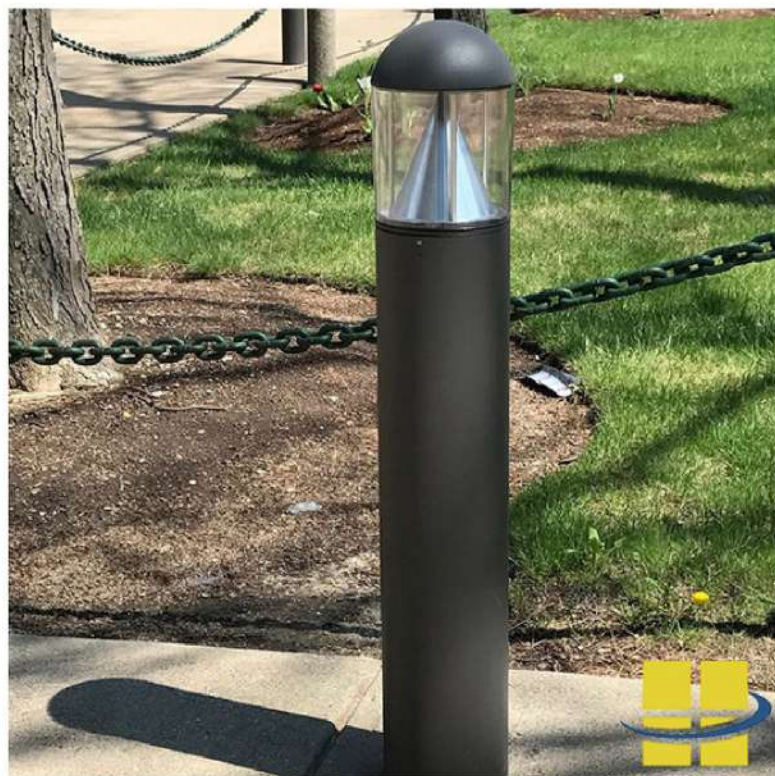


**AccessFixtures**  
High-Performance Lighting Solutions

## CONA OPTIONS

### OPTIONS

- Choice of Finish: Bronze, Black, or custom RAL colors available upon request
- Stainless Steel
- Standard (42") or custom height down to 30"
- Choice of shipping anchor bolts ahead of time or with bollard light
- GCFI Outlet
- Surge protection
- Choice of 3000K, 4000K, 5000K, 590nm Amber, FWC Certified or PC Amber
- Shielding options
- Backup battery

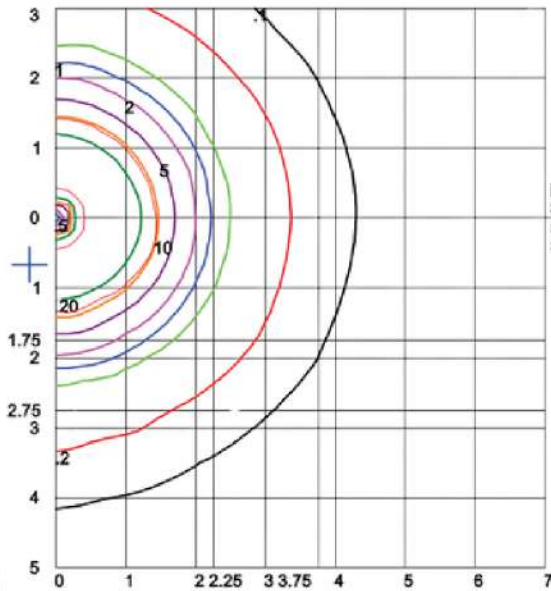




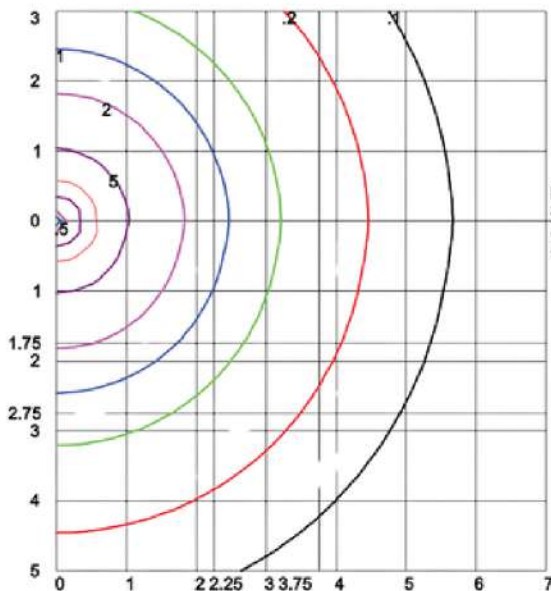
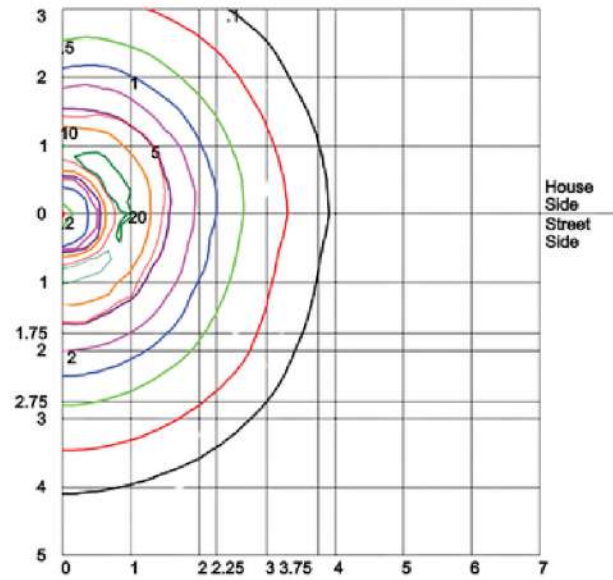
# AccessFixtures

High-Performance Lighting Solutions

## PHOTOMETRIC DATA



Distance In Units Of Mounting Height  
Values Based On 3 Foot Mounting Height  
1/2 Maximum Candela Trace Shown As Dashed Curve  
(\*) = Maximum Candela Point



Distance In Units Of Mounting Height  
Values Based On 3 Foot Mounting Height  
1/2 Maximum Candela Trace Shown As Dashed Curve  
(\*) = Maximum Candela Point



# Ordering Information

## Example: AF33XBOFRWQ-C-1X22-U-4K-C-Z-42-SF

Model	Optics/Beam	Wattage	Driver	CCT	Lens	Color	Height	Options
<p><b>AF33XBOFRWQ</b>= Round Flat Top Bollard with Low Glare White Cone Reflector</p> <p><b>AF33XBOFRLQ</b>= Round Flat Top Bollard with LED Cone Reflector</p>	<p><b>C</b>=Type III <b>F</b>=Wide Beam Spread</p>	<p><b>1x10</b> = 10w <b>1x15</b> = 15w <b>1x22</b> = 22w</p>	<p><b>U</b> = 120-277v <b>C</b> = 347* <b>*15w Model Only</b></p>	<p><b>3K</b>=3000K <b>4K</b>=4000K <b>5K</b>=5000K</p>	<p><b>C</b>=Clear UV- Stabilized Polycarbonate Vandal- Resistant Lens <b>L</b>= Opal UV- Stabilized Polycarbonate Vandal- Resistant Lens</p>	<p><b>B</b>=Black <b>Z</b>=Bronze <b>C</b>=Custom</p>	<p><b>30</b>=30" height <b>36</b>=36" height <b>42</b>=42" Standard Height</p>	<p><b>SF</b>=SingleFuse* <b>DF</b>=Double Fuse* <b>SP</b>=Surge Protection <b>GFI</b>=GFCI outlet, 15A, 120v <b>GSB</b>=180° Glare Shield, Black <b>GSZ</b>=180° Glare Shield, Bronze <b>GSC</b>=180° Glare Shield,Custom Color (Consult Lighting Specialist) <b>S5</b>=Microwave Sensor with Dimming &amp; Remote Programming <b>BU</b>=Battery Backup,90 Minutes* <b>BUC</b>=Cold Start Battery Backup, -20°C, 90 Minutes*</p> <p><b>*120-277v models only</b></p>

