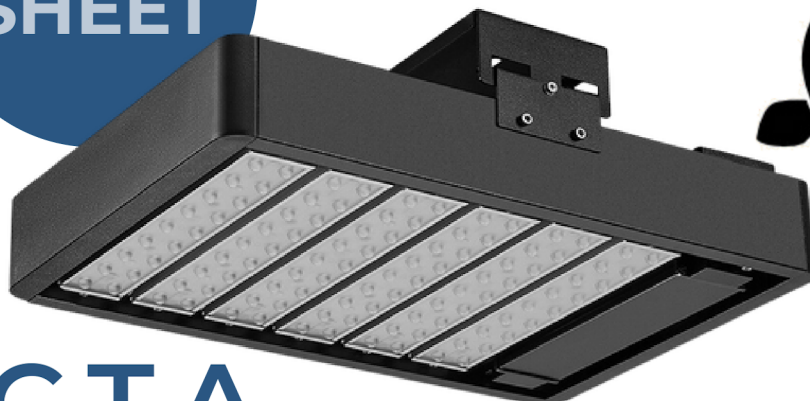


SPEC  
SHEET



# OCTA

LED CANOPY LIGHTS

590nm Amber

AccessFixtures.com

1

## EXTREME-LIFE:

Exceptional heat sink design produces an EXTREME-LIFE rating of L70 @ 200,000 hours for years of virtually maintenance free performance

2

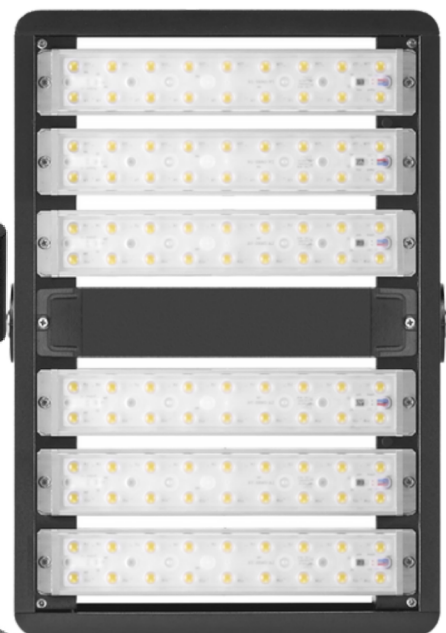
## Flawless Light:

Choice of advanced optics, Kelvin, and color rendering of up to Ra>90 facilitates premium anti-glare illumination

3

## 590nm Amber LEDs:

590nm Amber LEDs provide turtle friendly and wildlife friendly LED lighting.



PH: 800-468-9925  
Sales@AccessFixtures.com  
AccessFixtures.com



AccessFixtures  
High-Performance Lighting Solutions

## OCTA FEATURES

<b>Weight</b>	11.9-54.6lbs
<b>Dimensions</b>	6.89" - 26.99"
<b>Availability</b>	Typically ships in 3-4 weeks
<b>Light Source</b>	LED Array
<b>Available Finishes</b>	Black, Gray
<b>Finish</b>	High grade aluminum with exceptional heat sink design
<b>Optic</b>	T1S, T5M, T5W, T10D, T20D, T40D, T60D, T90D
<b>Efficiency</b>	Up to 160 LPW
<b>Listings</b>	ETL, CUL, DLC, CE, CB ,SAA, IK10, IP66 Listed
<b>Product Family</b>	OCTA
<b>Rated Life</b>	L70 @ 200,000 hours
<b>System Watts</b>	40w - 960w
<b>Voltage</b>	100-277VAC or 277-480VAC, 50/60Hz
<b>Warranty</b>	5-Year Limited Warranty
<b>CRI</b>	Ra70 [Standard], Ra80, Ra90 [Optional]

### OPTIONS

- 1-10v dimming
- T1S T5M T5W T10D T20D T40D T60D T90D optics
- 10v PWM control
- DALI control/DMX control
- Microwave motion sensor
- Emergency power supply, back light shield, SAC safety cable, additional cable
- Ra80 or Ra90 optional
- Bird spikes

