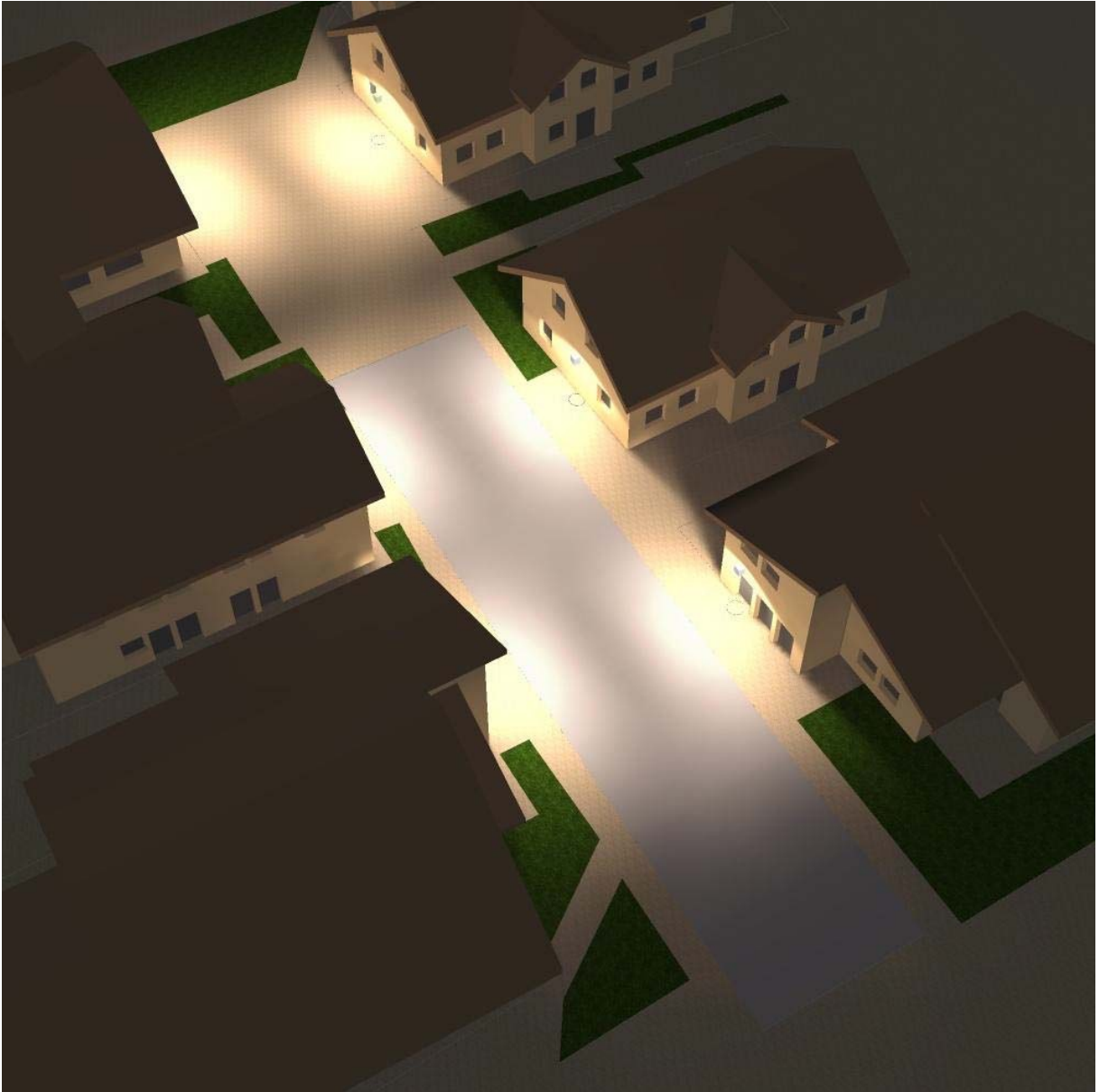


**Driveways Illuminated with APTO 20s  
2200 Kelvin Full Cutoff  
Dark Sky Compliant**



**This photometric study was generated using methods recommended by the Illuminating Engineering Society of North America (IESNA). The calculations in this report are based on data provided by a third party. The accuracy of this report is dependent on the accuracy of the data provided. End user environment and application including but not limited to voltage variation and dirt accumulation can cause actual photometric performance to differ from the performance calculated using the data provided. This report is provided without warranty as to accuracy, completeness, reliability or otherwise. In no event will Access Fixtures be responsible for any loss resulting from use of this report.**

Operator Jonathan  
Telephone  
Fax  
e-Mail

## Table of contents

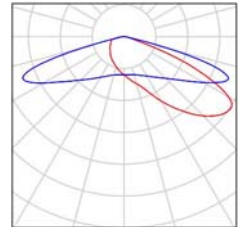
<b>AFL-Driveway in an apartment Building Lighting ZM-2022-1249</b>	
Project Cover	1
Table of contents	2
Luminaire parts list	3
<b>Exterior Scene 1</b>	
Planning data	4
Luminaires (layout plan)	5
Luminaires (coordinates list)	6
Street-valuation fields (list of coordinates)	7
3D Rendering	8
False Color Rendering	9
<b>Exterior Surfaces</b>	
<b>Street-valuation field 20X65.5</b>	
Value Chart (E)	10
<b>Street-valuation field 20X130</b>	
Value Chart (E)	11

Operator Jonathan  
Telephone  
Fax  
e-Mail

## AFL-Driveway in an apartment Building Lighting ZM-2022-1249 / Luminaire parts list

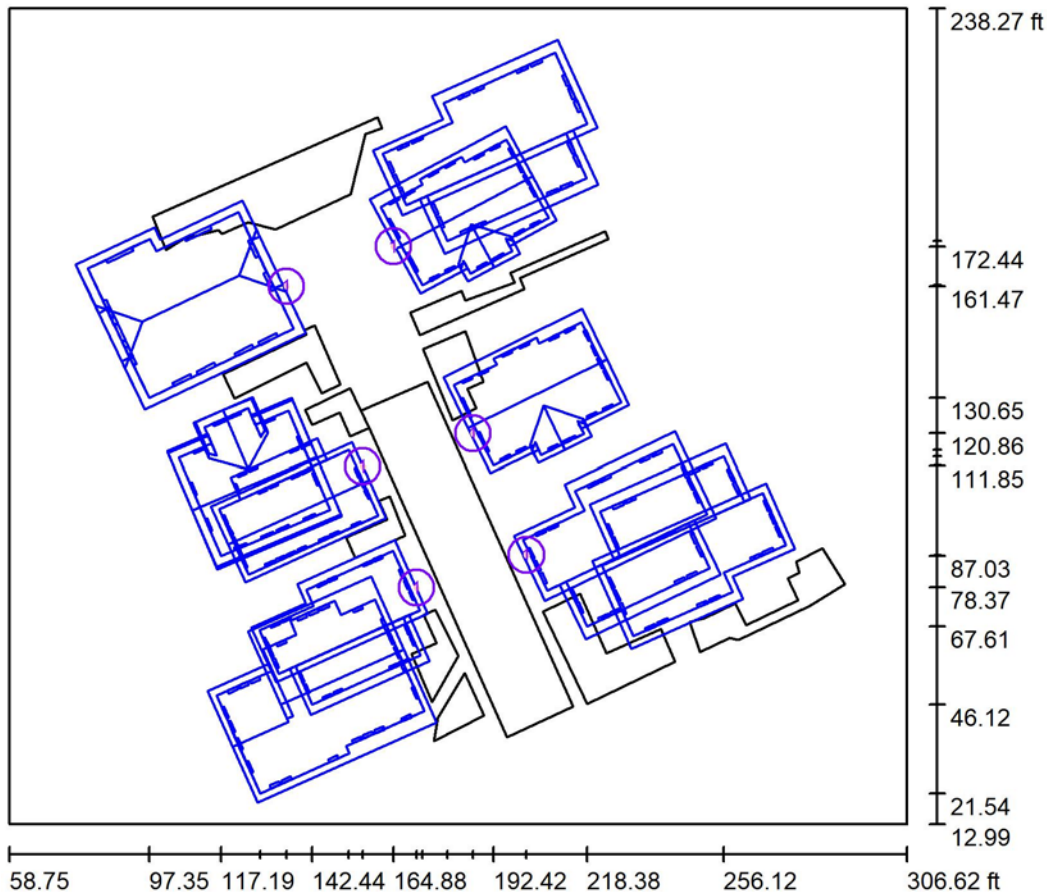
6 Pieces WLA20-T4M1-CREE XPG2 2200K Wall Pack  
Article No.:  
Luminous flux (Luminaire): 1560 lm  
Luminous flux (Lamps): 1573 lm  
Luminaire Wattage: 22.8 W  
Luminaire classification according to CIE: 100  
CIE flux code: 24 60 95 100 99  
Fitting: 1 x User defined (Correction Factor 1.000).

See our luminaire catalog for an image of the luminaire.



Operator Jonathan  
 Telephone  
 Fax  
 e-Mail

**Exterior Scene 1 / Planning data**



Light loss factor: 0.80, ULR (Upward Light Ratio): 0.0%

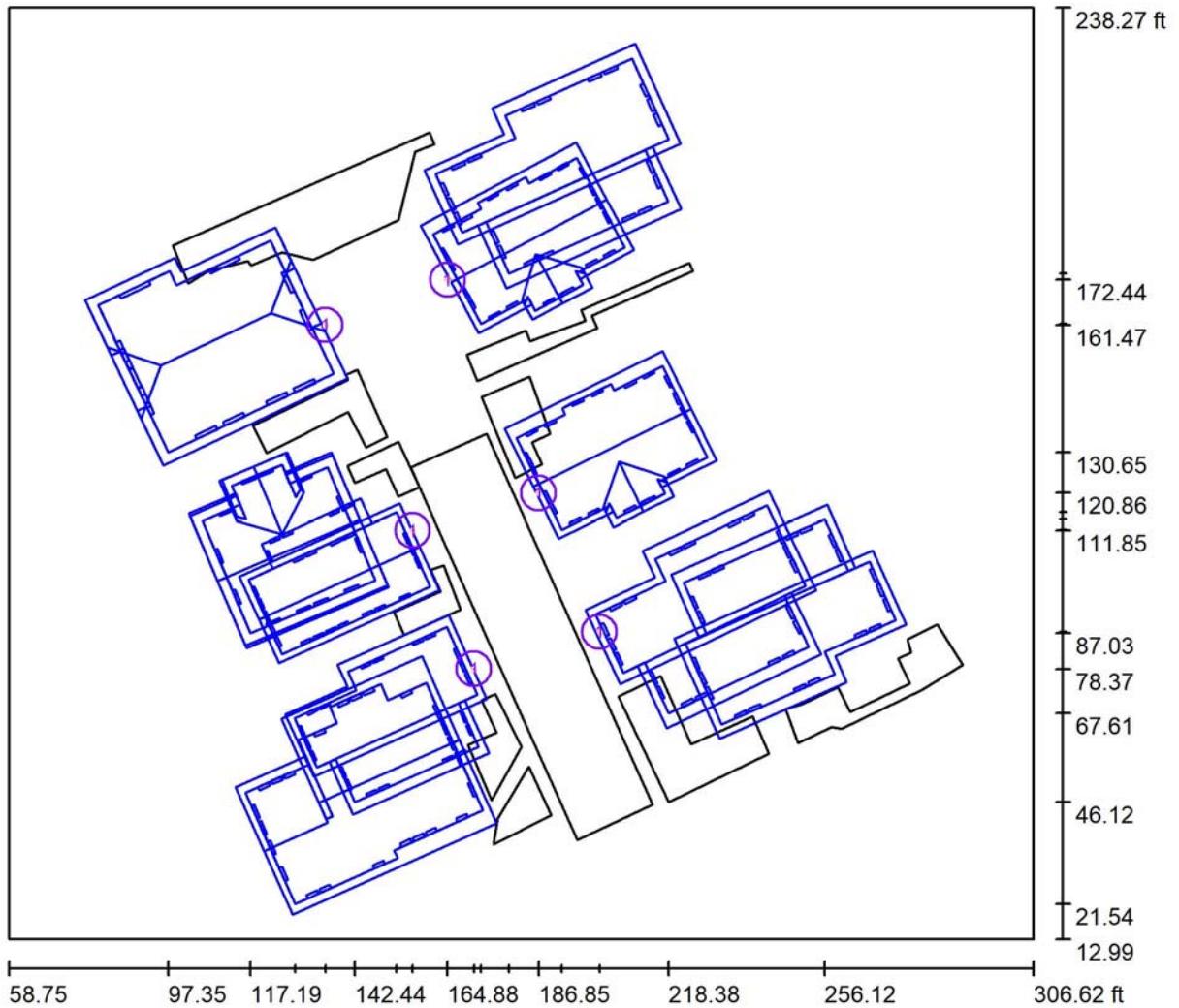
Scale 1:637

**Luminaire Parts List**

No.	Pieces	Designation (Correction Factor)	Φ (Luminaire) [lm]	Φ (Lamps) [lm]	P [W]
1	6	WLA20-T4M1 -CREE XPG2 2200K Wall Pack (1.000)	1560	1573	22.8
*Modified Technical Specifications			Total: 9357	Total: 9438	136.8

Operator Jonathan  
 Telephone  
 Fax  
 e-Mail

**Exterior Scene 1 / Luminaires (layout plan)**



Scale 1 : 541

**Luminaire Parts List**

No.	Pieces	Designation
1	6	WLA20-T4M1-CREE XPG2 2200K Wall Pack

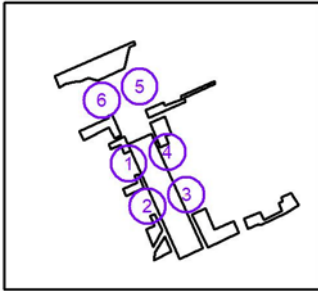
\*Modified Technical Specifications

Operator Jonathan  
 Telephone  
 Fax  
 e-Mail

**Exterior Scene 1 / Luminaires (coordinates list)**

**WLA20-T4M1-CREE XPG2 2200K Wall Pack**

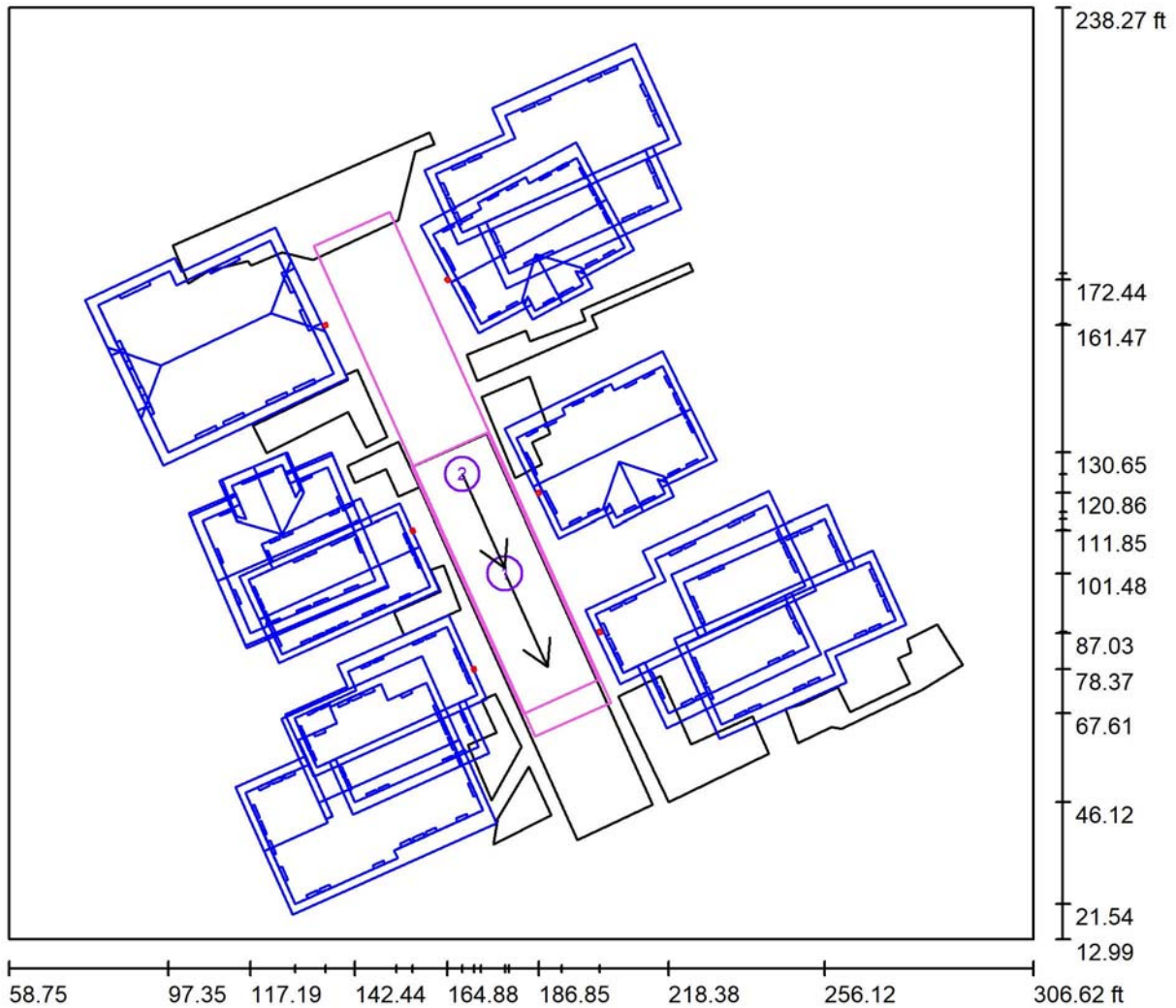
1560 lm, 22.8 W, 1 x 1 x User defined (Correction Factor 1.000).



No.	Position [ft]			Rotation [°]		
	X	Y	Z	X	Y	Z
1	156.435	111.845	8.000	0.0	0.0	23.8
2	171.231	78.369	8.000	0.0	0.0	23.8
3	201.615	87.376	8.000	0.0	0.0	-156.2
4	186.845	120.863	8.000	0.0	0.0	-156.2
5	164.880	172.439	8.000	0.0	0.0	-151.4
6	135.281	161.471	8.000	0.0	0.0	26.9

Operator Jonathan  
 Telephone  
 Fax  
 e-Mail

**Exterior Scene 1 / Street-valuation fields (list of coordinates)**



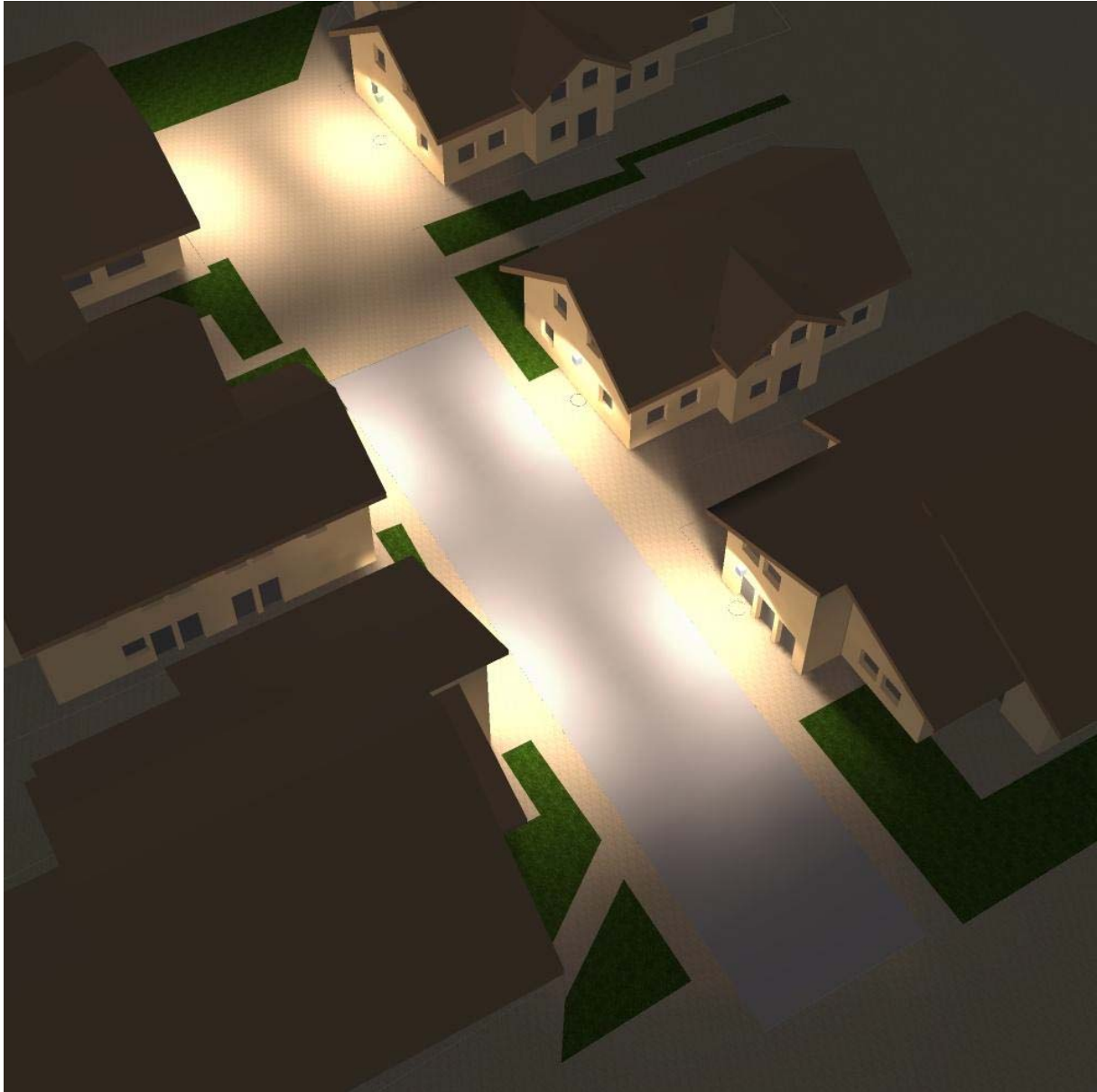
Scale 1 : 541

**Pseudo-Calculation Field List**

No.	Designation	Position [ft]			Size [ft]		Viewing direction [°]	Grid
		X	Y	Z	L	W		
1	Street-valuation field 20X65.5	178.751	101.479	0.000	65.500	20.000	-65.7	10 x 3
2	Street-valuation field 20X130	168.426	125.415	0.000	130.000	20.000	-65.7	10 x 3

Operator Jonathan  
Telephone  
Fax  
e-Mail

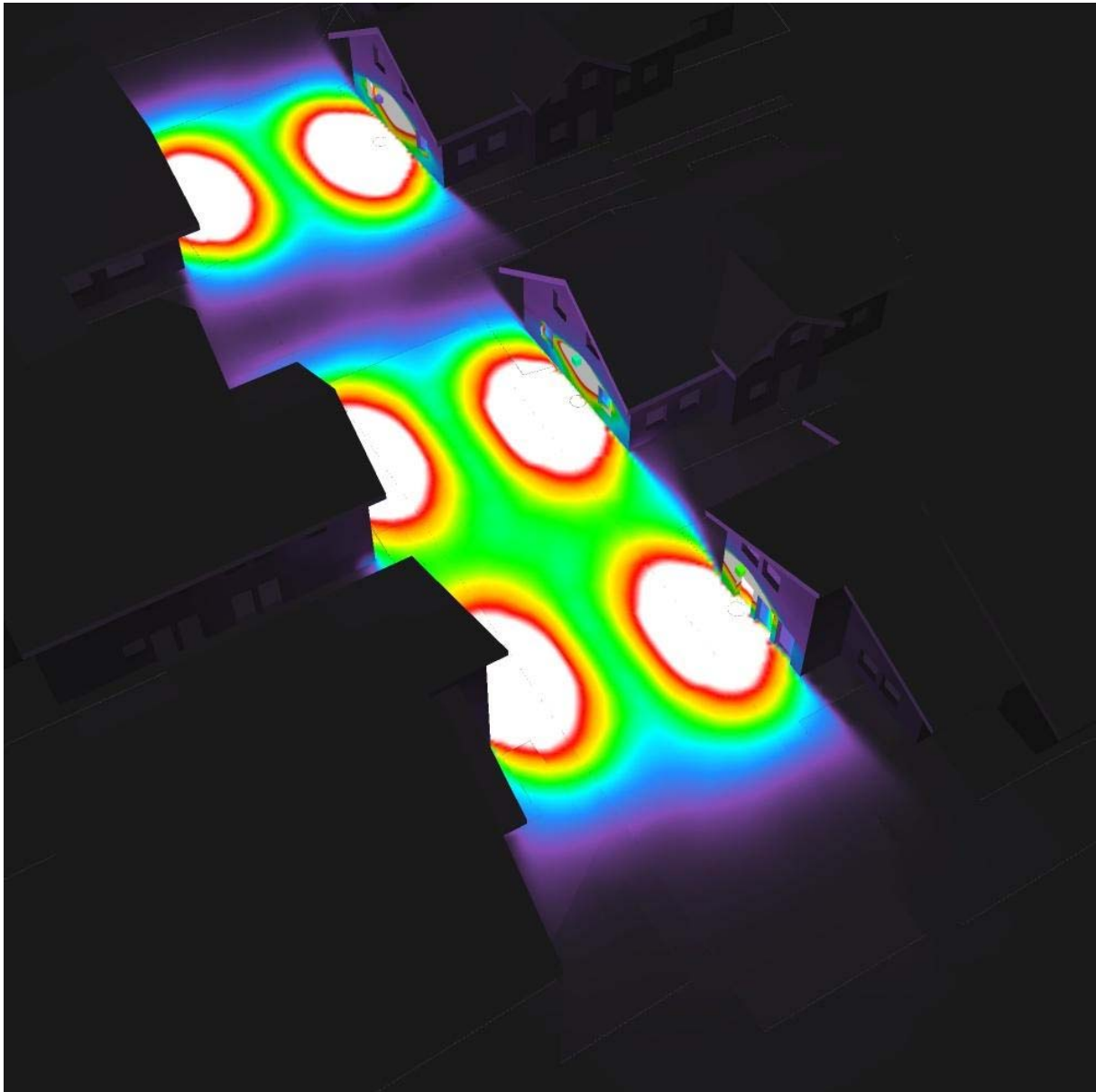
**Exterior Scene 1 / 3D Rendering**





Operator Jonathan  
Telephone  
Fax  
e-Mail

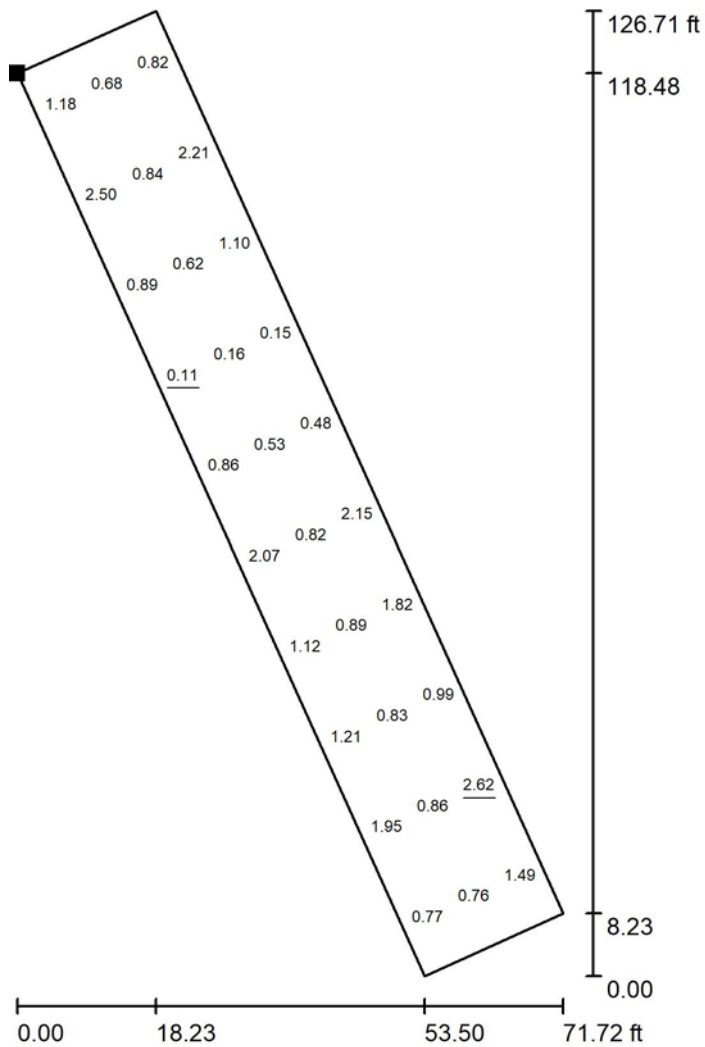
**Exterior Scene 1 / False Color Rendering**



0 0.25 0.50 0.75 1.00 1.25 1.50 1.75 2.00 fc

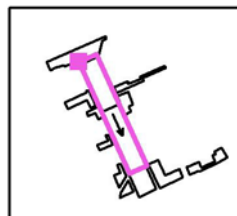
Operator Jonathan  
 Telephone  
 Fax  
 e-Mail

**Exterior Scene 1 / Street-valuation field 20X130 / Value Chart (E)**



Values in Footcandles, Scale 1 : 303

Position of surface in external scene:  
 Marked point:  
 (132.564 ft, 180.541 ft, 0.000 ft)



Grid: 10 x 3 Points

$E_{av}$ [fc]	$E_{min}$ [fc]	$E_{max}$ [fc]	u0	$E_{min} / E_{max}$
1.12	0.11	2.62	0.094	0.040

Rotation: -65.7°