

**SPEC
SHEET**



PICKLEBALL

Court LED Lighting

AccessFixtures.com

EXTREME-LIFE:

1 EXTREME-LIFE: Exceptional heat sink design produces an EXTREME-LIFE rating of L70 @ 200,000 hours for years of virtually maintenance free performance.

Super Efficient:

2 With 360w watts per light fixture and lumens per watt of up to 160, APTAs can provide over 150,000 lumens from just one light fixture, delivering outstanding value and efficiency.

Maximum Value

3 Using only two poles and two fixtures, this pickleball single-court LED lighting package provides not only excellent quality, IP66 and IK10 ratings for impact resistance to withstand extreme weather conditions but is also budget-friendly.



PH: 800-468-9925
Sales@AccessFixtures.com
AccessFixtures.com



AccessFixtures
High-Performance Lighting Solutions



APTA FIXTURE FEATURES

Light Source	LED
Kelvin	2200K, 3000K
Watts	360w, 480w
Available Finishes	Bronze, Black, Grey, White, Green
Housing	High-grade aluminum
CRI	70+
Lumens	33,600
LPW	Up to 160 LPW
Mounting	U mount (Bracket), T mount (arm), L mount (slip fitter)
Beam Angle	T2S, T3S, T3M, T4VVS, T4VS, T4S, T4M, T5M, T5W, T10D, T20D, T40DH, T60DH, T90D
Listings	CUL, DLC, CE, CB, SAA, IP66, IK10, ETL, ENEC
Product Family	APTA
Voltage	100-277 VAC, 347-480 VAC
Warranty	5-year limited warranty





POLE FEATURES

Specifications	Conforms to ASTM-A 500 Grade B: Minimum yield strength of 46,000 PSI
Finish	Textured architectural bronze powdercoat finish
Anchor bolts	Included; M20 x 27.5" (11 gauge), or M22 x 33" (7 gauge)
Hand Hole	Cast iron reinforced hand hold and cover with ground screw
Material	High strength steel
Base cover	Poles are provided with a two-piece formed steel base cover that is easily assembled and fitted over pole base
Pole Length	20'
Mounting	Standard Length Poles Include $2\frac{3}{8}$ " OD Tenon, Side Drilled 4 @ 90 Degrees, UV- Stabilized Polycarbonate Top Cover and Hole Plugs for Unused Drilling Locations
Warranty	5-year limited warranty

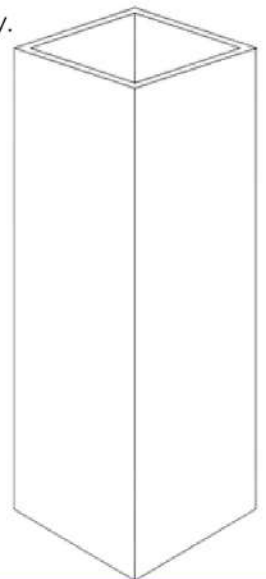


WIND LOADING & DIMENSIONAL DATA

Pole Description		80 MPH		90 MPH		100 MPH		110 MPH		120 MPH		130 MPH		140 MPH		150 MPH		Structure Weight (lbs.)
Shaft Size & Wall Thickness	Mounting Height	Max EPA (SQ FT)	Max Weight (LBS)	Max EPA (SQ FT)	Max Weight (LBS)	Max EPA (SQ FT)	Max Weight (LBS)	Max EPA (SQ FT)	Max Weight (LBS)	Max EPA (SQ FT)	Max Weight (LBS)	Max EPA (SQ FT)	Max Weight (LBS)	Max EPA (SQ FT)	Max Weight (LBS)	Max EPA (SQ FT)	Max Weight (LBS)	
4" Square, 11 Gauge	10' - 0"	30.6	765	20.0	500.0	16.0	400.0	13.0	325.0	10.5	263.0	8.5	213.0	7.0	175.0	6.0	150.0	73
	12' - 0"	24.4	610	16.0	400.0	13.0	325.0	10.0	250.0	8.0	200.0	6.5	163.0	5.0	125.0	4.0	100.0	88
	14' - 0"	19.9	498	13.5	338.0	10.0	250.0	7.5	188.0	6.0	150.0	4.5	113.0	3.5	88.0	2.5	63.0	102
	16' - 0"	15.9	398	10.5	263.0	7.5	188.0	5.5	138.0	4.0	100.0	3.0	75.0	1.5	38.0	1.0	25.0	117
	18' - 0"	12.6	315	8.0	200.0	5.5	138.0	4.0	100.0	2.5	63.0	1.5	38.0	0.5	13.0	-	-	131
	20' - 0"	9.6	240	6.0	150.0	4.0	100.0	2.5	63.0	1.0	25.0	-	-	-	-	-	-	146
	25' - 0"	7.2	200	4.1	124	2.1	77	1.0	45	-	-	-	-	-	-	-	-	202
5" Square, 7 Gauge	10' - 0"	64.8	1621	46.1	1153	35	865	27	664	20	491	14	346	10	261	7	173	135
	12' - 0"	49.9	1247	35.5	887	27	665	20	511	15	378	11	266	8	200	5	133	162
	14' - 0"	41.5	1039	29.6	739	22	554	17	426	13	315	9	222	7	167	4	111	189
	16' - 0"	34.6	866	24.6	616	18	462	14	355	10	262	7	185	6	139	4	92	217
	18' - 0"	30.9	773	22	550	17	413	13	317	9	234	7	165	5	124	3	83	244
	20' - 0"	28.1	703	20.0	500	15	375	12	288	9	213	6	150	5	113	3	75	271
	22' - 0"	24.1	602	16.2	405	13	320	8	207	5	113	2	57	2	57	2	38	298
	25' - 0"	18.5	463	12.0	300	9	213	6	138	3	75	2	38	-	-	-	-	338
	28' - 0"	13.9	347	8.8	220	5	132	2	38	-	-	-	-	-	-	-	-	379
	30' - 0"	10.7	267	6.5	163	4	88	1	25	-	-	-	-	-	-	-	-	406

NOTES:

1. Maximum EPA (Effective Projected Area) and weight values are based on AASHTO 2013 (90-150MPH) and AASHTO 2008 (80MPH).
2. Consult one of our lighting specialists to discuss on loading criteria for pole top mounted luminaires and/or brackets.
3. Variations from sizes above are available upon inquiry with one of our lighting specialists.
4. Satisfactory performance of poles is dependent upon the pole being properly attached to a supporting foundation of adequate design.
5. Structure weight is a nominal value which includes the pole shaft and base plate only.





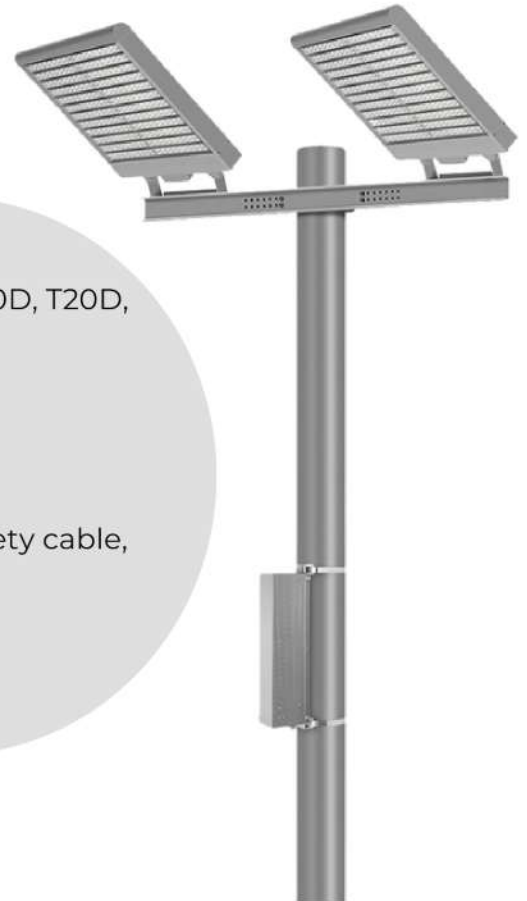
AccessFixtures

High-Performance Lighting Solutions

APTA FEATURES

OPTIONS

- 1-10v dimming
- T2S, T3S, T3M, T4VUSB, T4VS, T4S, T4M, T5M, T5W, T10D, T20D, T40DH, T60DH, T90D optics
- 10v PWM control
- DALI control/DMX control
- Microwave motion sensor
- Photocell
- Emergency power supply, back light shield, SAC safety cable, additional cable, spill control
- 3/4 Baffle
- Ra80 or Ra90 optional
- Bird spikes



PH: 800-468-9925
Sales@AccessFixtures.com
AccessFixtures.com



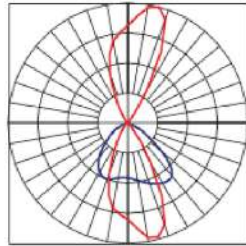
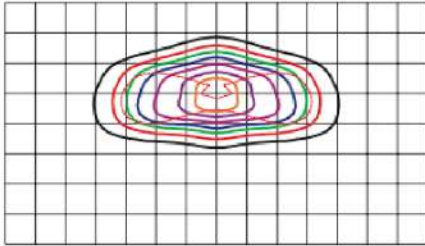
AccessFixtures
High-Performance Lighting Solutions



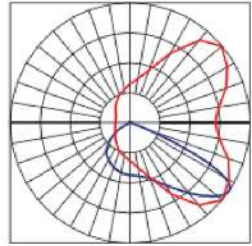
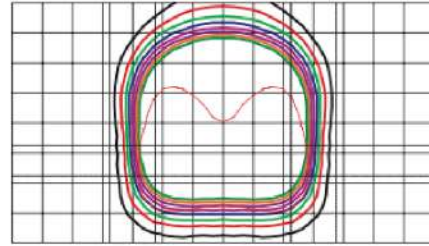
AccessFixtures

High-Performance Lighting Solutions

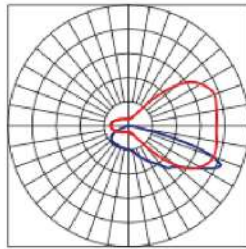
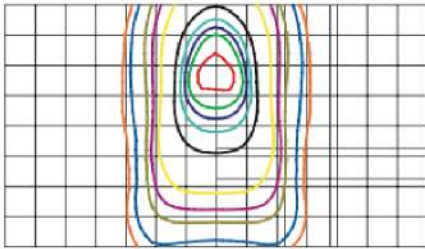
APTA FIXTURE PHOTOMETRICS



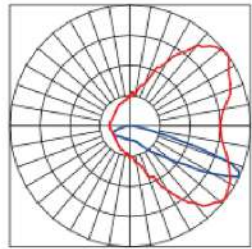
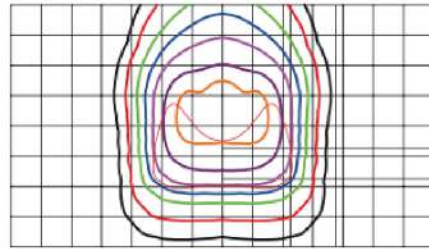
T2S Type II Short



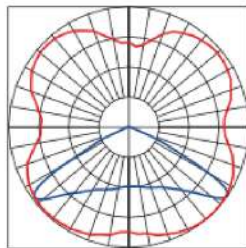
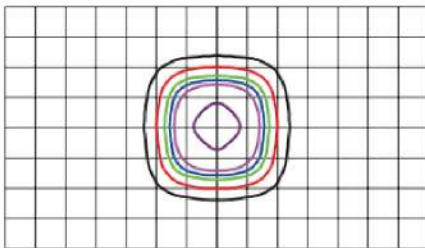
T3S Type III Short



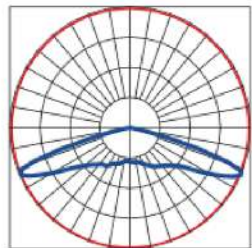
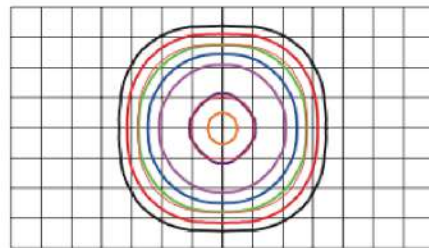
T4VS Type IV Very Short



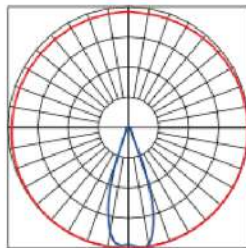
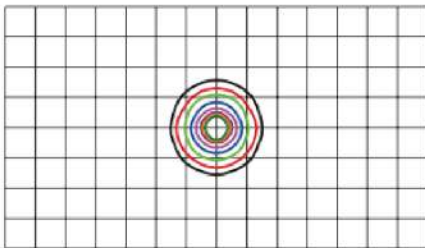
T4S Type IV Short



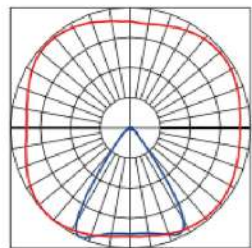
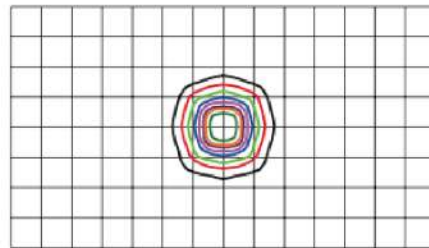
T5M Type V Square Medium



T5W Type V Square Wide



T40D 40° Flood



T60D 60° Flood

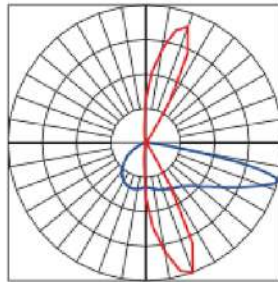
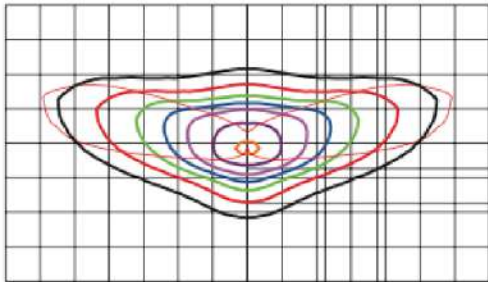




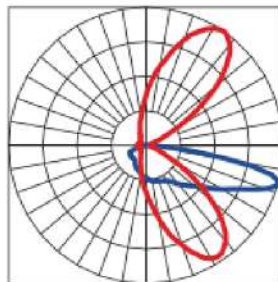
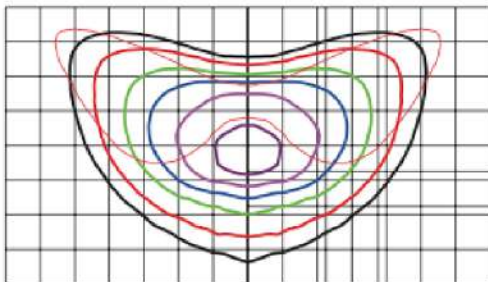
AccessFixtures

High-Performance Lighting Solutions

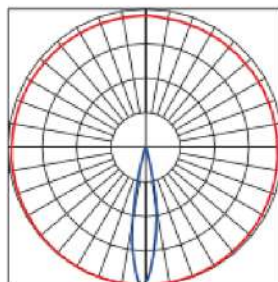
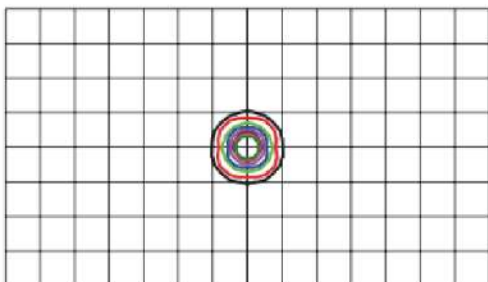
APTA FIXTURE PHOTOMETRICS



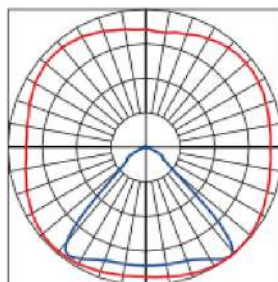
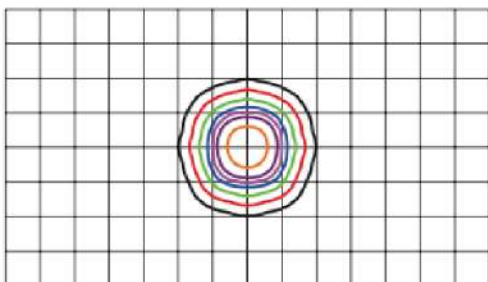
T3M Type III Medium



T4M Type IV Medium



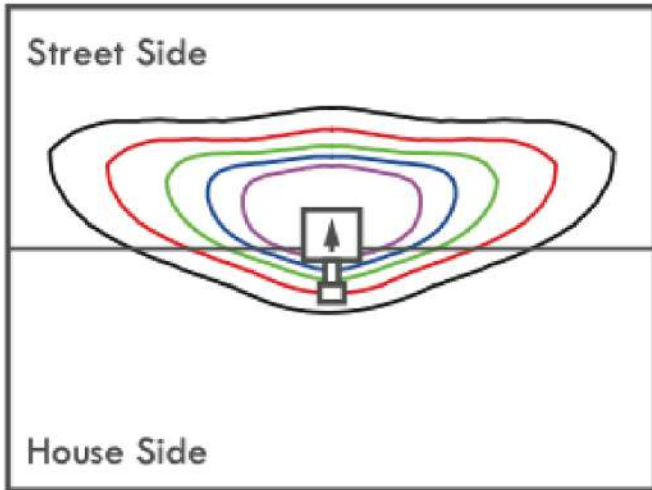
T20D 20° Flood



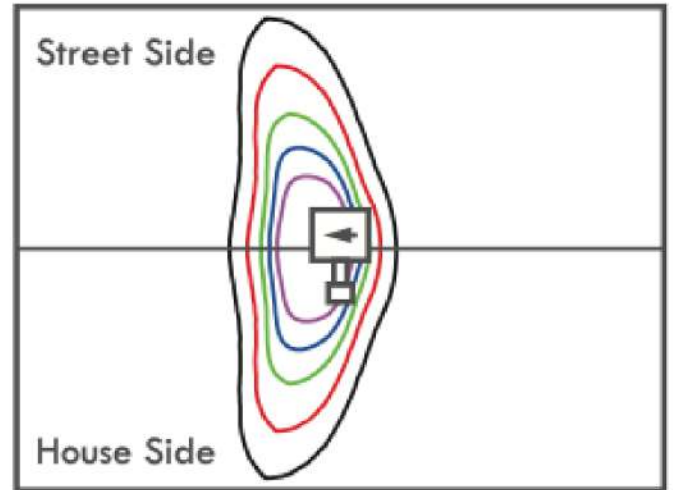
T90D 90° Flood



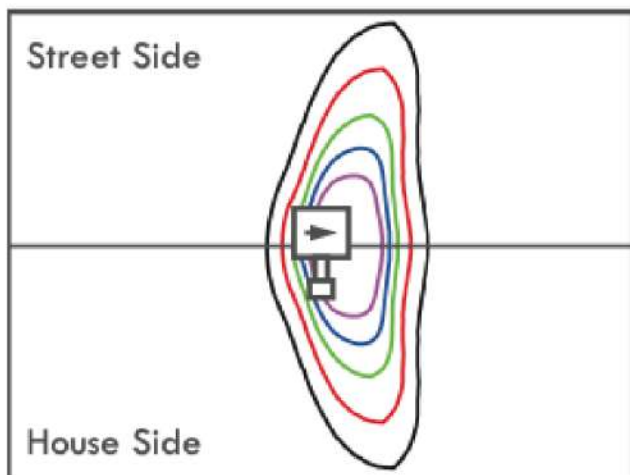
APTA FIXTURE OPTIC ORIENTATION



Standard



Optics Rotated Left @ 90°

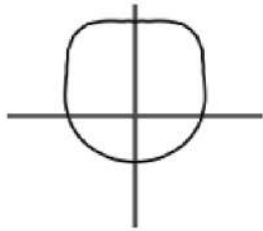


Optics Rotated Right @ 90°

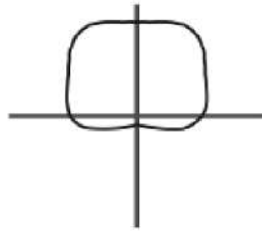


APTA FIXTURE OPTICAL DISTRIBUTIONS

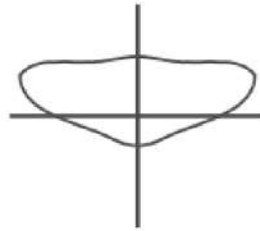
Type III Short



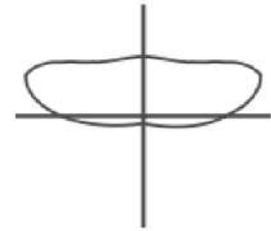
Type III Short
Spill Control



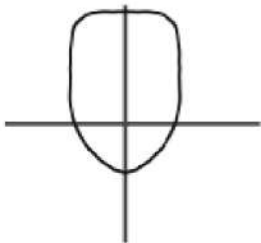
Type III
Medium



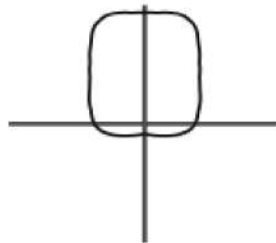
Type III Medium
Spill Control



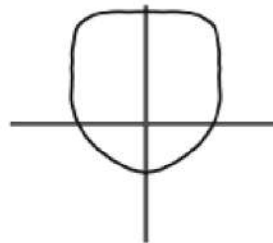
Type IV
Very Short



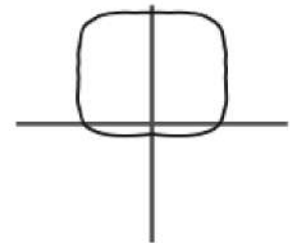
Type IV Very
Short Spill Control



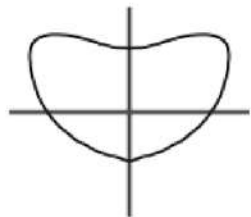
Type IV Short



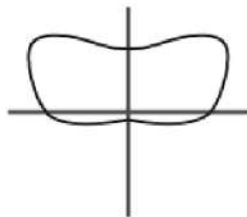
Type IV Short
Spill Control



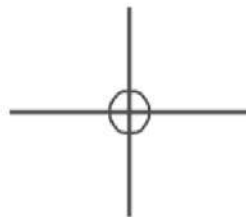
Type IV
Medium



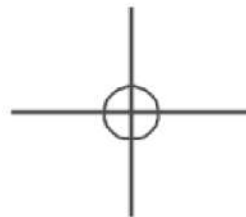
Type IV Medium
Spill Control



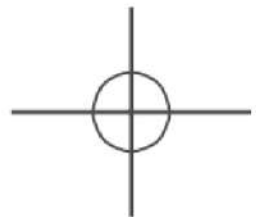
10° Flood



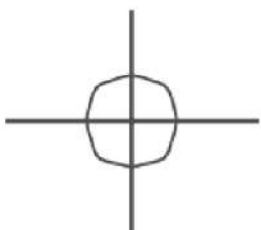
20° Flood



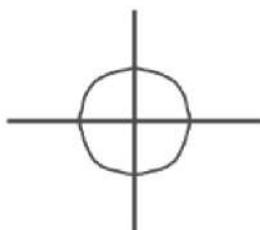
40° Flood



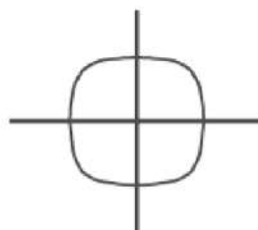
60° Flood



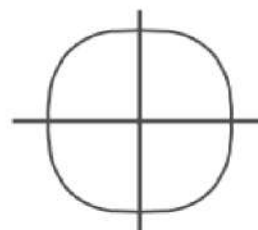
90° Flood



Type V Square
Medium



Type V Square
Wide



Ordering Information - Part 1

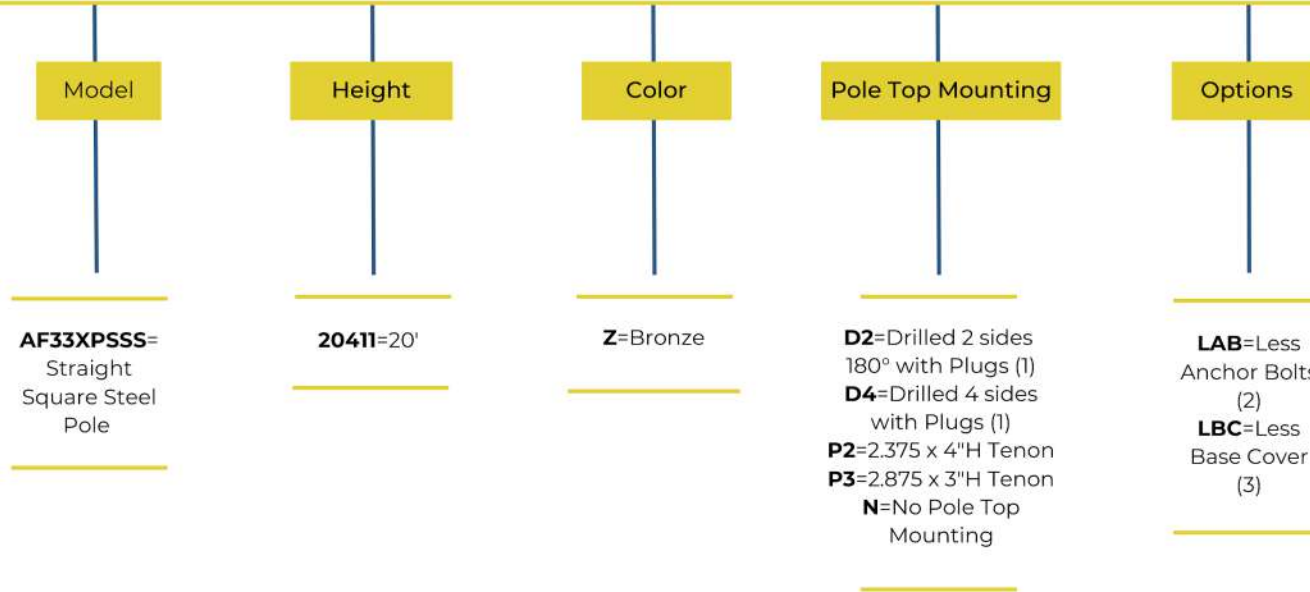
Example: AF33XPAD360-L-U-T3M-4000K-C-WH-MMS

Model	Voltage	Mounting	Optic	CCT	Color	Color	Options
AF33XPAD360	L =100-277VAC H =277-480VAC	U J	T2S T3S T3M T4VVS T4VS T4S T4M T5M T5W T10D T20D T40DH T60DH T90D	4000K	C =Clear UV-Stabilized Polycarbonate Vandal-Resistant Lens L = Opal UV-Stabilized Polycarbonate Vandal-Resistant Lens	GY Gray-RAL7004 BK Black-RAL9011 BZ Bronze-RAL8019 WH White-RAL9010	DIMI =1-10v Dimming PWM =10V PWM Control DALI =Dali Control MMS =Motion Sensor PC3 =Photocell 3PIN PC7 =Photocell 7PIN PCM =Photocell MINI BLS =Back Light Shield BSP =Bird Spike ORL =Optics Rotated Left ORR =Optics Rotated Right



Ordering Information - Part 2

Example: AF33XPSSS-20411-Z-N-LBC



Example: AF33XPAD360-L-U-T3M-4000K-C-WH-MMS + AF33XPSSS20411ZN

