

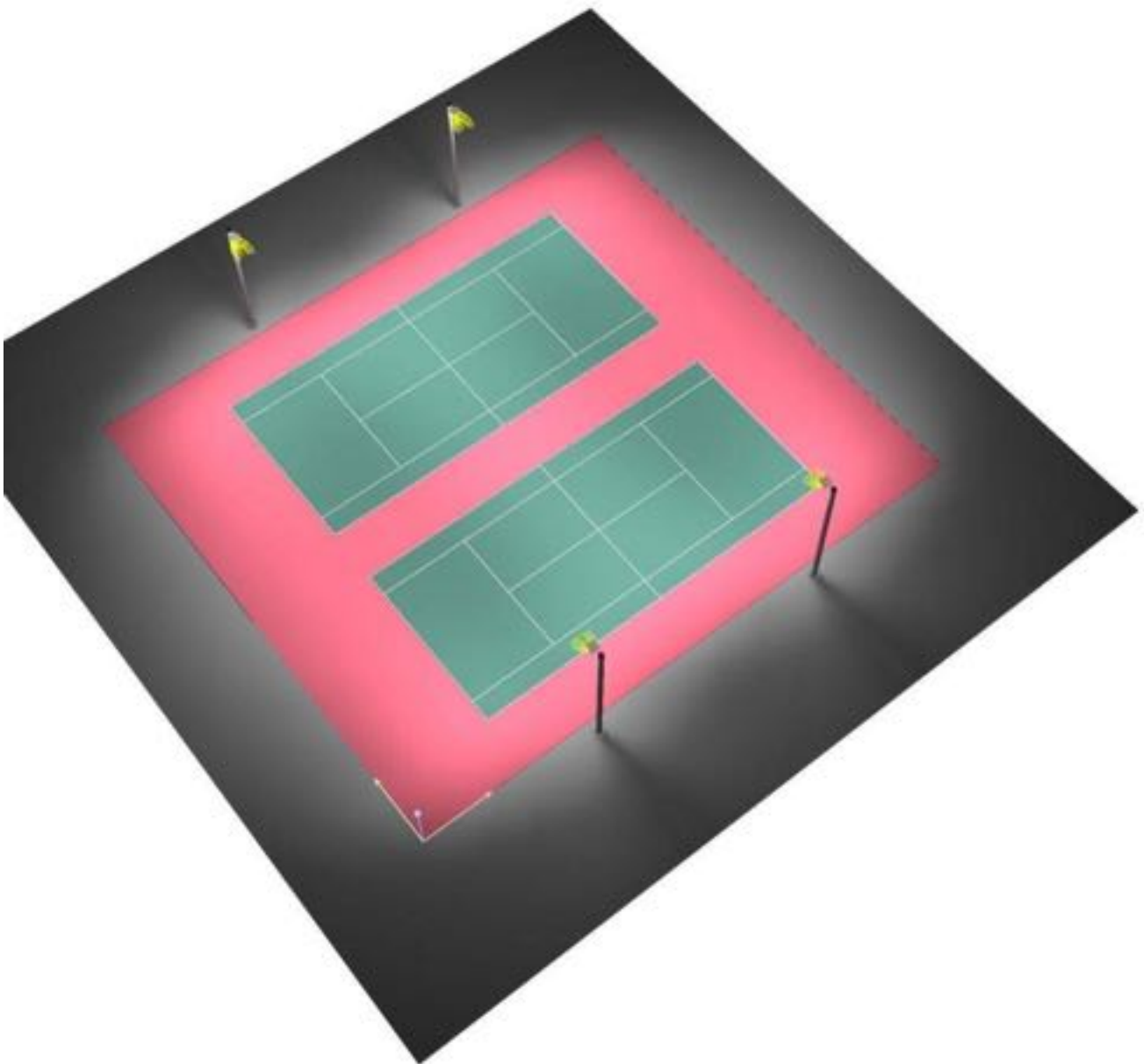


## **Twin Recreation Level Tennis Courts**

**Full Cutoff - Dark Sky Compliant with 3000 Kelvin LEDs**

**4 APTA 960s Mounted on 4 30' Poles**

**35 Average Footcandles - 1.84 Max/Min Ratio**



## Table of contents

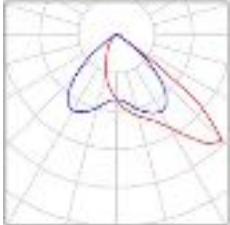
<b>Twin Tennis Courts</b>	
Project Cover	1
Table of contents	2
Luminaire parts list	3
<b>AF88XABD960-T4VSB-40K-3535F-V2</b>	
Luminaire Data Sheet	4
<b>Exterior Scene 1</b>	
Planning data	5
Luminaires (layout plan)	6
Luminaires (coordinates list)	7
3D Rendering	8
False Colour Rendering	9
<b>Exterior Surfaces</b>	
<b>Tennis 1 Calculation Grid (PA)</b>	
Summary	10
Isolines (E, Perpendicular)	11
Greyscale (E, Perpendicular)	12
Value Chart (E, Perpendicular)	13
Table (E, Perpendicular)	14
<b>Tennis 2 Calculation Grid (PA)</b>	
Summary	16
Isolines (E, Perpendicular)	17
Greyscale (E, Perpendicular)	18
Value Chart (E, Perpendicular)	19
Table (E, Perpendicular)	20



**9300 Lime Bay Dual Courts / Luminaire parts list**

4 Pieces AF88XABD960-T4VSB-40K-3535F-V2 Article No.:  
Luminous flux (Luminaire): 118585 lm  
Luminous flux (Lamps): 118501 lm  
Luminaire Wattage: 916.2 W  
Luminaire classification according to CIE: 100  
CIE flux code: 61 97 99 100 100  
Fitting: 1 x 4000K 3535F-V2 (Correction Factor 1.000).

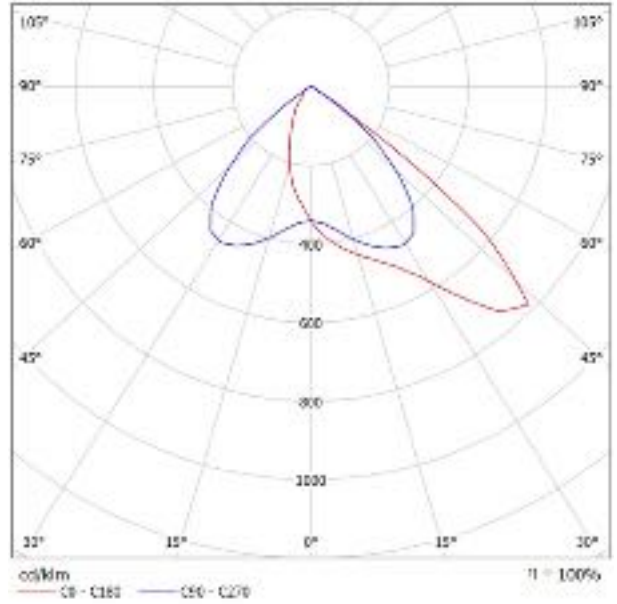
See our luminaire catalog for an image of the luminaire.



### AF88XABD960-T4VSB-40K-3535F-V2 / Luminaire Data Sheet

Luminous emittance 1:

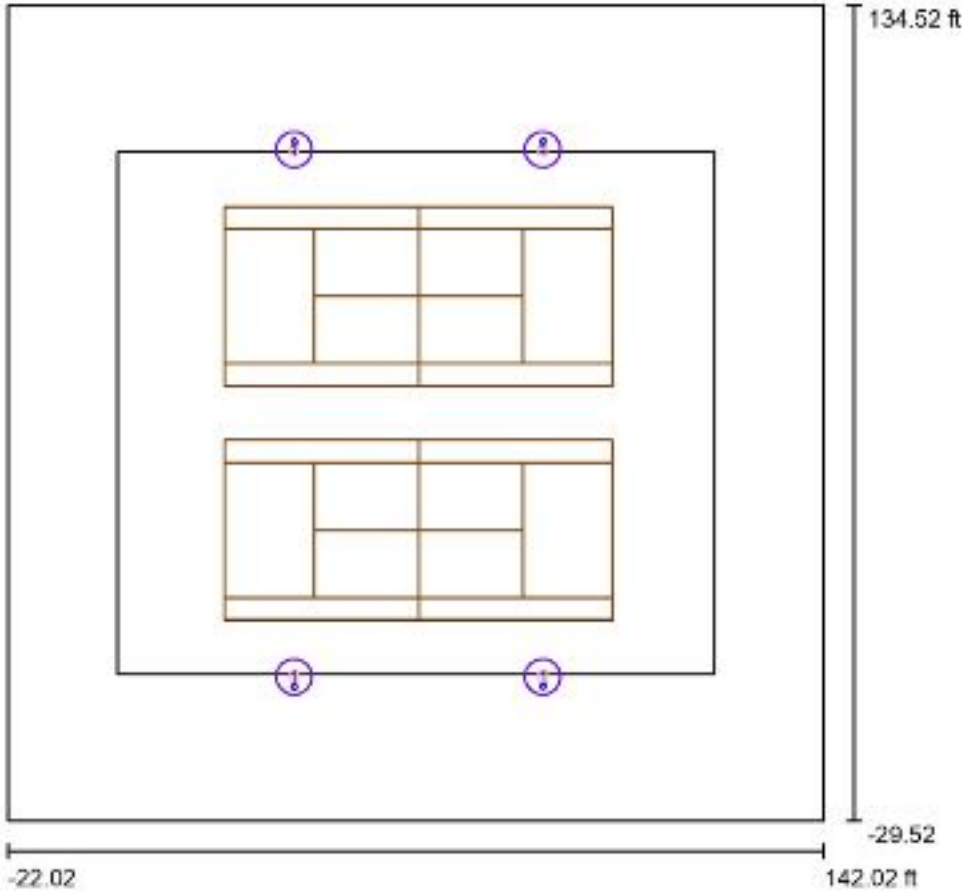
See our luminaire catalog for an image of the luminaire.



Luminaire classification according to CIE: 100  
CIE flux code: 61 97 99 100 100

Due to missing symmetry properties, no UGR table can be displayed for this luminaire.

## Exterior Scene 1 / Planning data



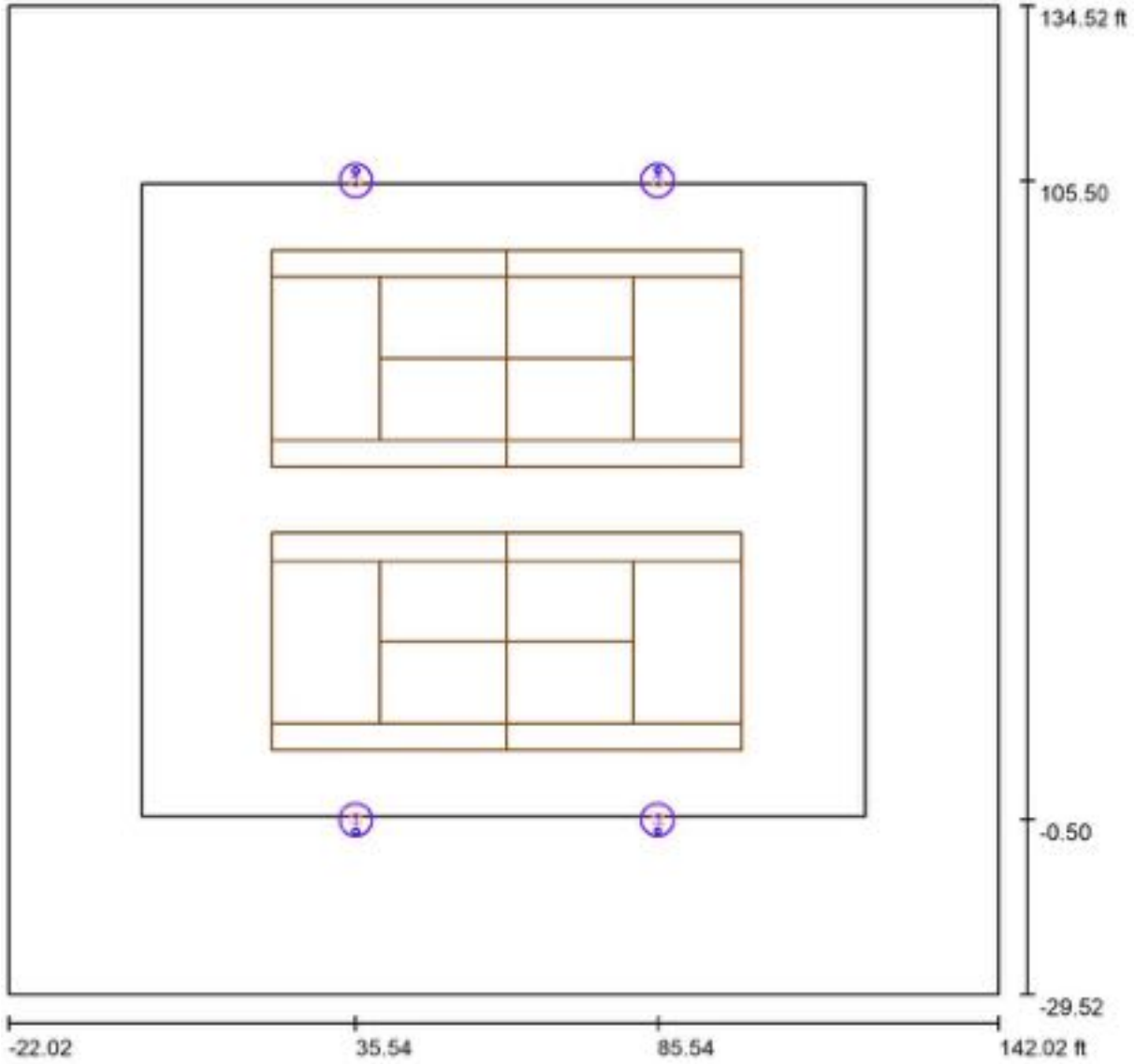
Maintenance factor: 0.90, ULR (Upward Light Ratio): 0.5%

Scale 1:464

### Luminaire Parts List

No.	Pieces	Designation (Correction Factor)	Φ (Luminaire) [lm]	Φ (Lamps) [lm]	P [W]
1	4	AF88XABD960-T4VSB-40K-3535F-V2 (1.000)	118585	118501	916.2
Total:			474339	474004	3664.7

Exterior Scene 1 / Luminaires (layout plan)



Scale 1 : 358

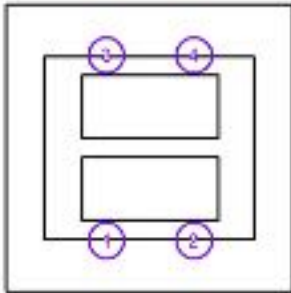
Luminaire Parts List

No.	Pieces	Designation
1	4	AF88XABD960-T4VSB-40K-3535F-V2

Exterior Scene 1 / Luminaires (coordinates list)

**AF88XABD960-T4VSB-40K-3535F-V2**

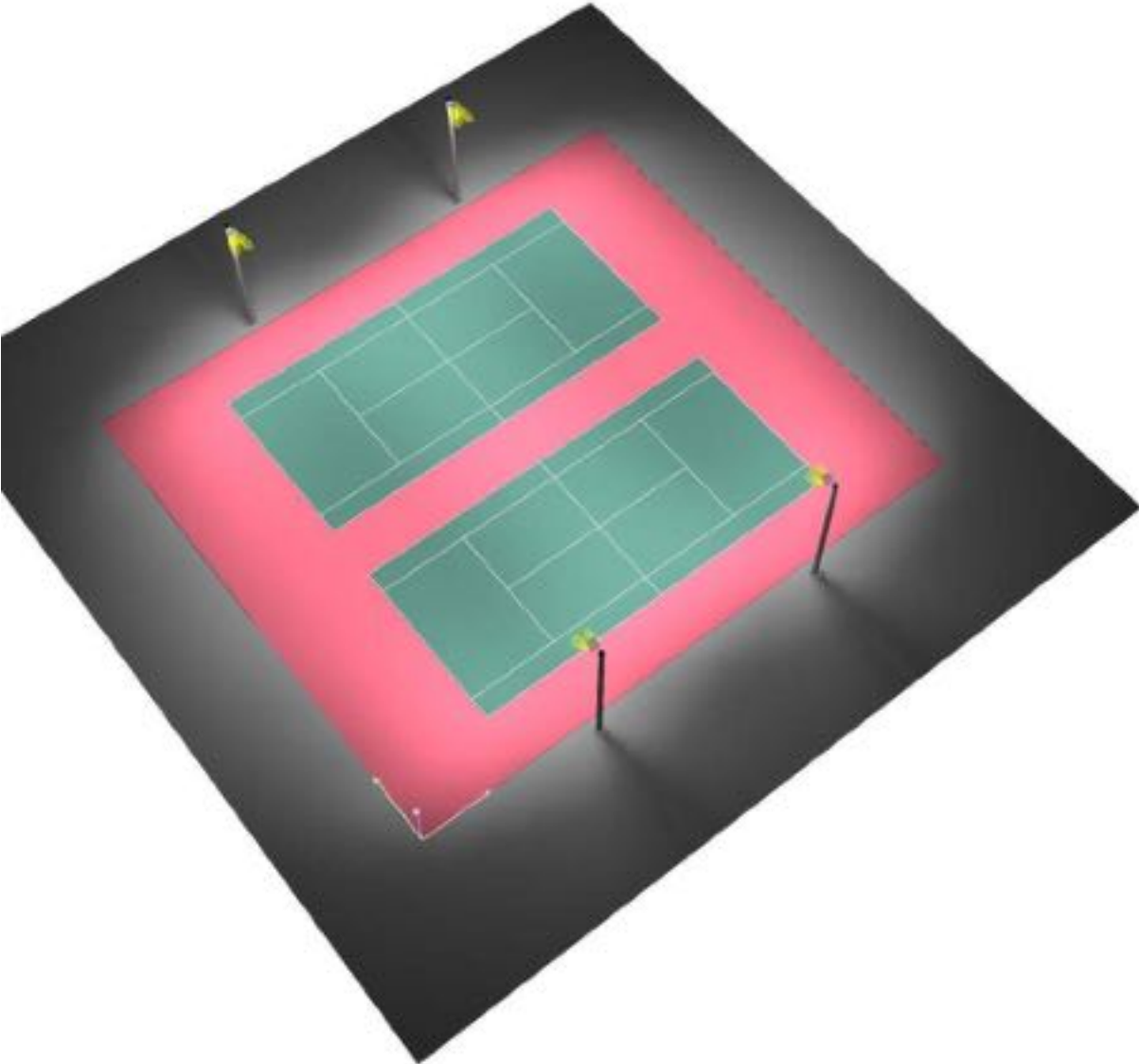
118585 lm, 916.2 W, 1 x 1 x 4000K 3535F-V2 (Correction Factor 1.000).



No.	Position [ft]			Rotation [°]		
	X	Y	Z	X	Y	Z
1	35.535	-0.500	30.000	0.0	-20.0	90.0
2	85.535	-0.500	30.000	0.0	-20.0	90.0
3	35.535	105.500	30.000	0.0	-20.0	-90.0
4	85.535	105.500	30.000	0.0	-20.0	-90.0



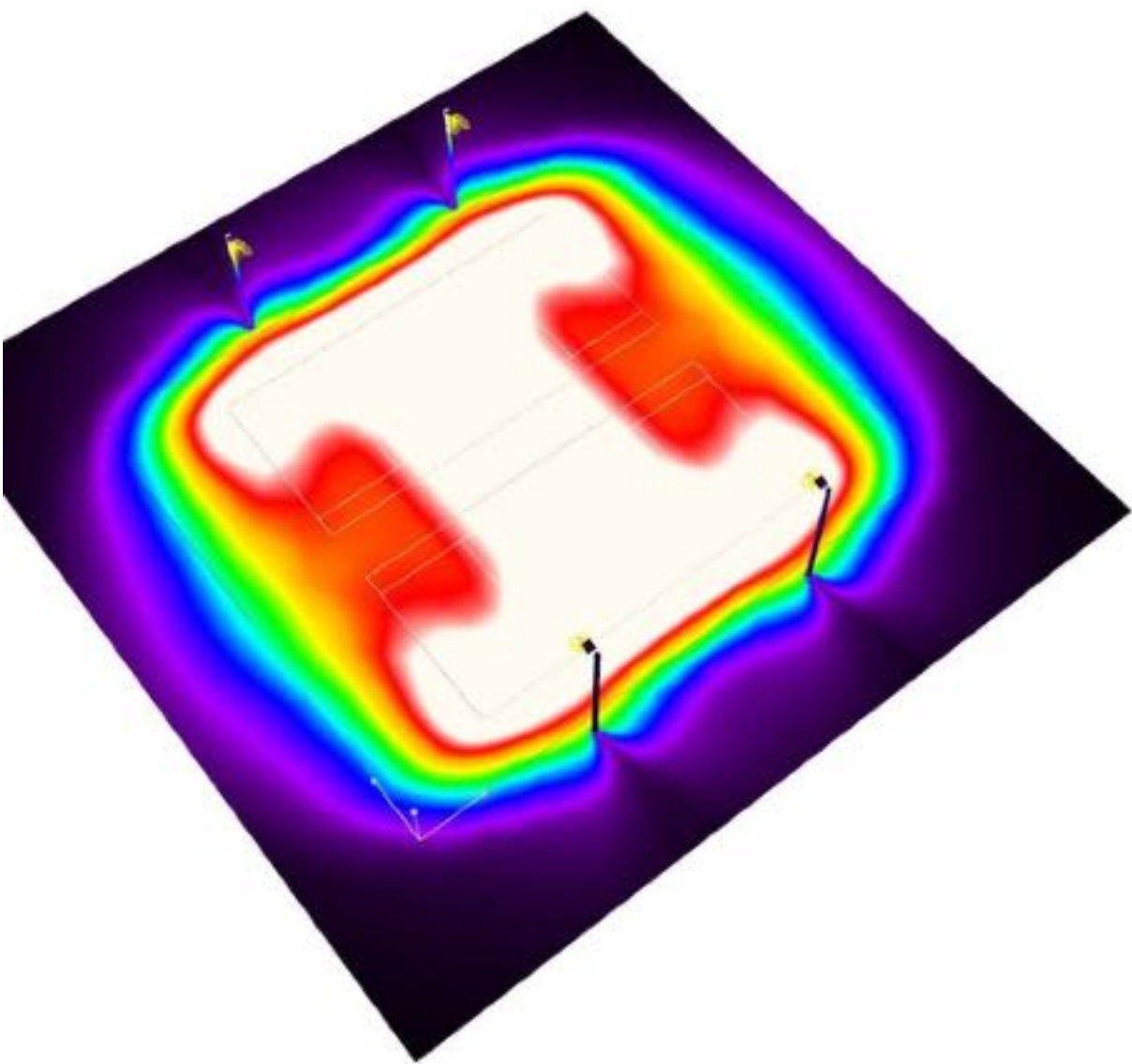
Exterior Scene 1 / 3D Rendering





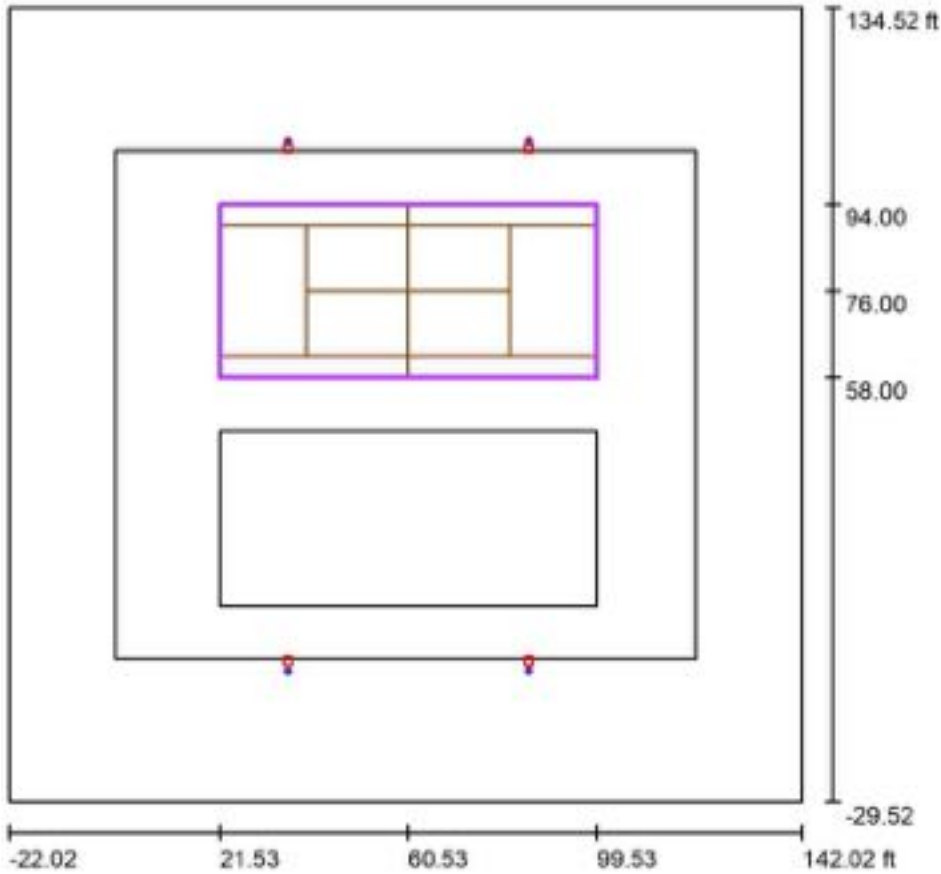


Exterior Scene 1 / False Colour Rendering



0 3.75 7.50 11.25 15.00 18.75 22.50 26.25 30.00 fc

Exterior Scene 1 / Tennis 1 Calculation Grid (PA) / Summary



Scale 1 : 477

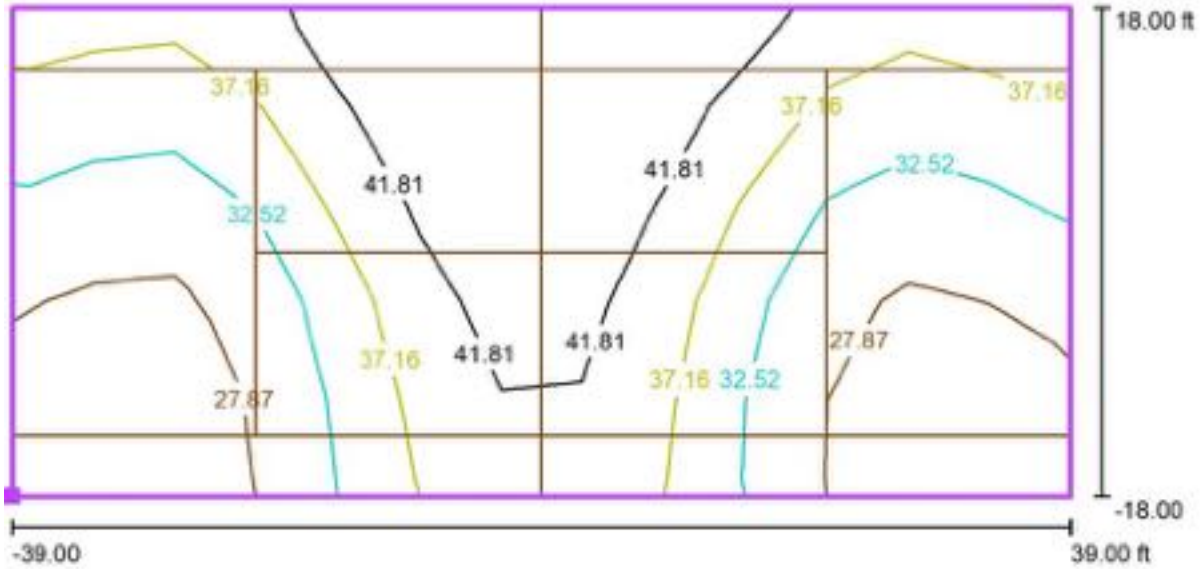
Position: (60.535 ft, 76.000 ft, 0.000 ft)  
 Size: (78.000 ft, 36.000 ft)  
 Rotation: (0.0°, 0.0°, 0.0°)  
 Type: Normal, Grid: 13 x 5 Points  
 Belongs to the following sport arena: Tennis 1

Results overview

No.	Type	$E_{av}$ [fc]	$E_{min}$ [fc]	$E_{max}$ [fc]	u0	$E_{min} / E_{max}$	$E_{h\ m} / E_m$	H [ft]	Camera
1	perpendicular	35	25	46	0.71	1.40	/	0.000	/

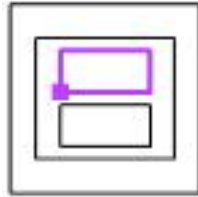
$E_{h\ m} / E_m$  = Relationship between middle horizontal and vertical illuminance, H = Measuring Height

Exterior Scene 1 / Tennis 1 Calculation Grid (PA) / Isolines (E, Perpendicular)



Values in Footcandles, Scale 1 : 170

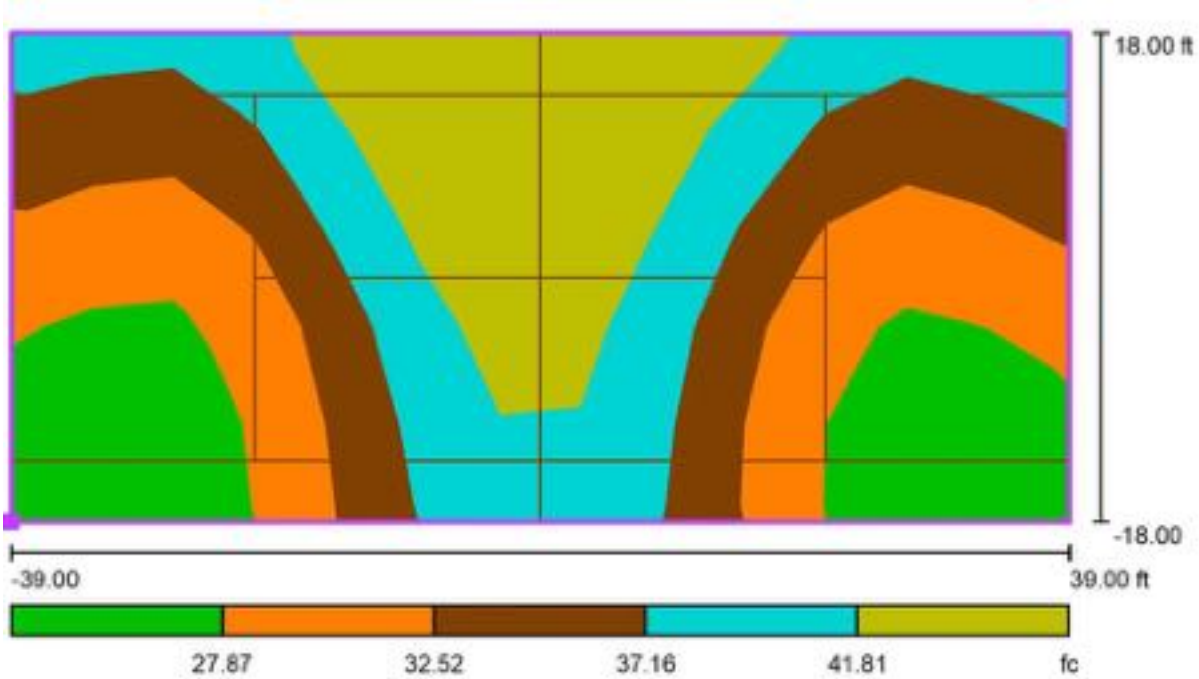
Position of surface in external scene:  
Marked point: (21.535 ft, 58.000 ft,  
0.000 ft)



Grid: 13 x 5 Points

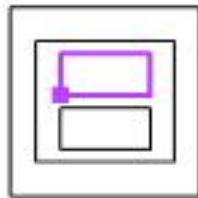
$E_{av}$ [fc]	$E_{min}$ [fc]	$E_{max}$ [fc]	u0	$E_{min} / E_{max}$
35	25	46	0.71	1.40

Exterior Scene 1 / Tennis 1 Calculation Grid (PA) / Greyscale (E, Perpendicular)



Scale 1 : 170

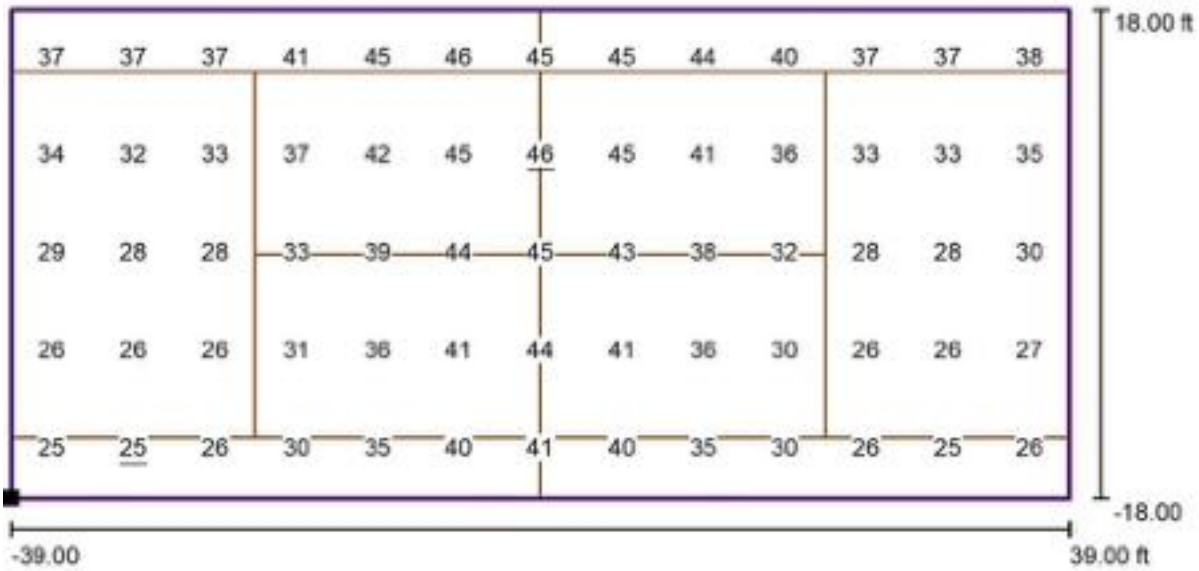
Position of surface in external scene:  
Marked point: (21.535 ft, 58.000 ft,  
0.000 ft)



Grid: 13 x 5 Points

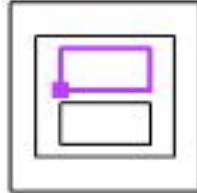
$E_{av}$ [fc]	$E_{min}$ [fc]	$E_{max}$ [fc]	$u_0$	$E_{min} / E_{max}$
35	25	46	0.71	1.40

## Exterior Scene 1 / Tennis 1 Calculation Grid (PA) / Value Chart (E, Perpendicular)



Values in Footcandles, Scale 1 : 170

Position of surface in external scene:  
 Marked point: (21.535 ft, 58.000 ft,  
 0.000 ft)



Grid: 13 x 5 Points

$E_{av}$  [fc]  
35

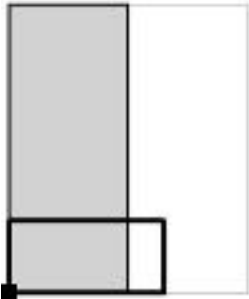
$E_{min}$  [fc]  
25

$E_{max}$  [fc]  
46

$u_0$   
0.71

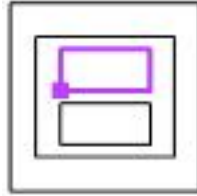
$E_{min} / E_{max}$   
1.40

Exterior Scene 1 / Tennis 1 Calculation Grid (PA) / Table (E, Perpendicular)



Current Selection  
 Further Selections

Position of surface in external scene:  
 Marked point: (21.535 ft, 58.000 ft,  
 0.000 ft)



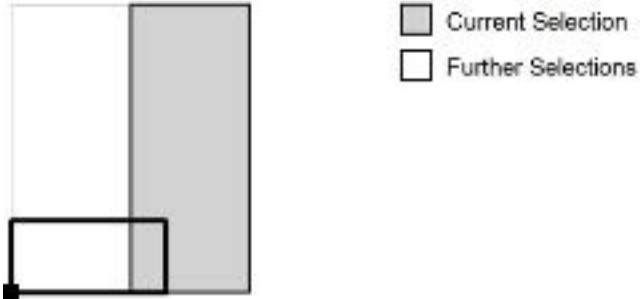
<b>32.400</b>	37	37	37	41	45	<u>46</u>	45	45	44	40
<b>25.200</b>	34	32	33	37	42	45	<u>46</u>	45	41	36
<b>18.000</b>	29	28	28	33	39	44	45	43	38	32
<b>10.800</b>	26	26	26	31	36	41	44	41	36	30
<b>3.600</b>	<u>25</u>	<u>25</u>	26	30	35	40	41	40	35	30
<b>ft</b>	<b>3.000</b>	<b>9.000</b>	<b>15.000</b>	<b>21.000</b>	<b>27.000</b>	<b>33.000</b>	<b>39.000</b>	<b>45.000</b>	<b>51.000</b>	<b>57.000</b>

Attention: The coordinates refer to the image above. Values in Footcandles.

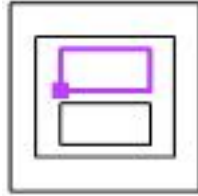
Grid: 13 x 5 Points

$E_{av}$ [fc]	$E_{min}$ [fc]	$E_{max}$ [fc]	u0	$E_{min} / E_{max}$
35	25	46	0.71	1.40

## Exterior Scene 1 / Tennis 1 Calculation Grid (PA) / Table (E, Perpendicular)



Position of surface in external scene:  
 Marked point: (21.535 ft, 58.000 ft,  
 0.000 ft)



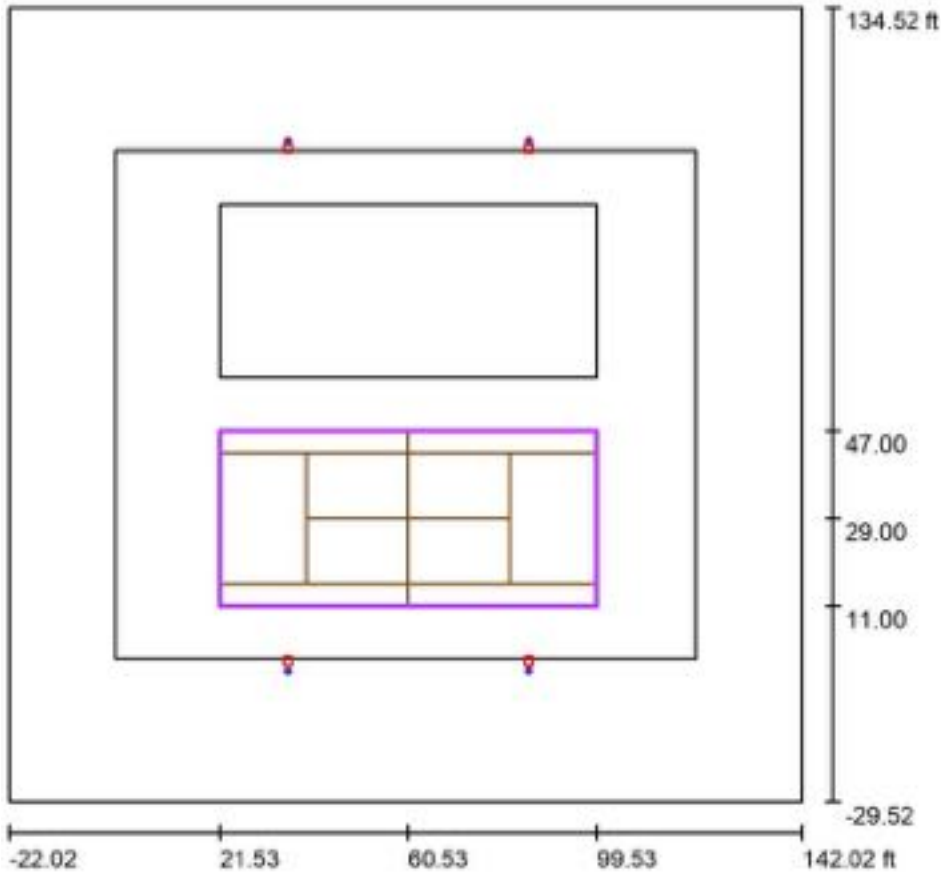
<b>32.400</b>	37	37	38
<b>25.200</b>	33	33	35
<b>18.000</b>	28	28	30
<b>10.800</b>	26	26	27
<b>3.600</b>	26	<u>25</u>	26
<b>ft</b>	<b>63.000</b>	<b>69.000</b>	<b>75.000</b>

Attention: The coordinates refer to the image above. Values in Footcandles.

Grid: 13 x 5 Points

$E_{av}$ [fc]	$E_{min}$ [fc]	$E_{max}$ [fc]	u0	$E_{min} / E_{max}$
35	25	46	0.71	1.40

Exterior Scene 1 / Tennis 2 Calculation Grid (PA) / Summary



Scale 1 : 477

Position: (60.535 ft, 29.000 ft, 0.000 ft)  
 Size: (78.000 ft, 36.000 ft)  
 Rotation: (0.0°, 0.0°, 0.0°)  
 Type: Normal, Grid: 13 x 5 Points  
 Belongs to the following sport arena: Tennis 2

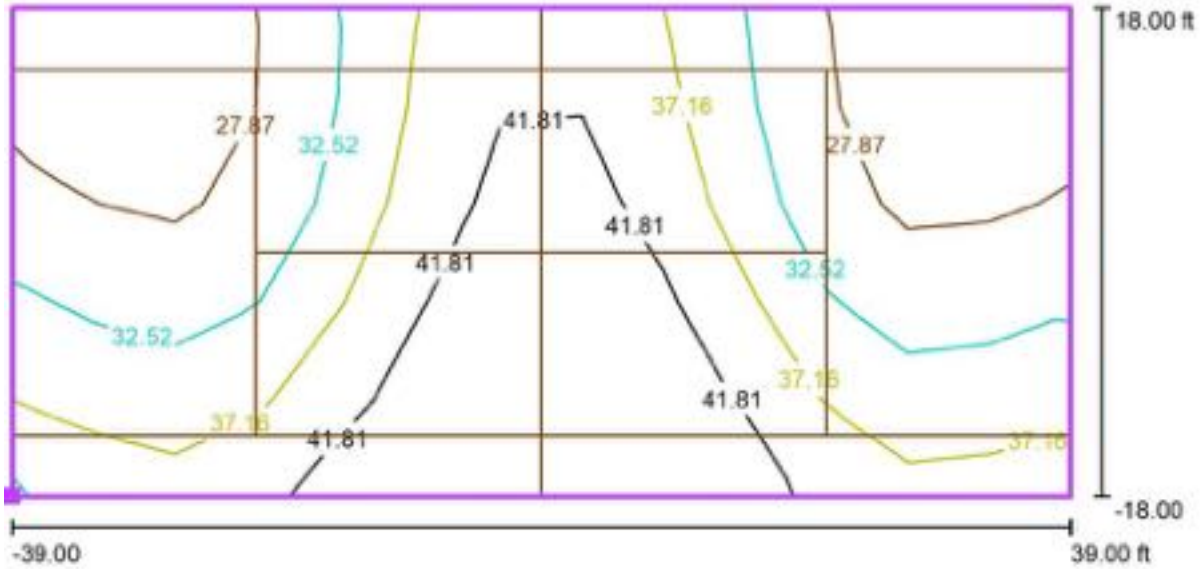
Results overview

No.	Type	$E_{av}$ [fc]	$E_{min}$ [fc]	$E_{max}$ [fc]	u0	$E_{min} / E_{max}$	$E_{h\ m} / E_m$	H [ft]	Camera
1	perpendicular	35	25	46	0.71	1.40	/	0.000	/

$E_{h\ m} / E_m$  = Relationship between middle horizontal and vertical illuminance, H = Measuring Height

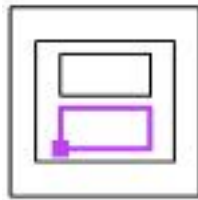


## Exterior Scene 1 / Tennis 2 Calculation Grid (PA) / Isolines (E, Perpendicular)



Values in Footcandles, Scale 1 : 170

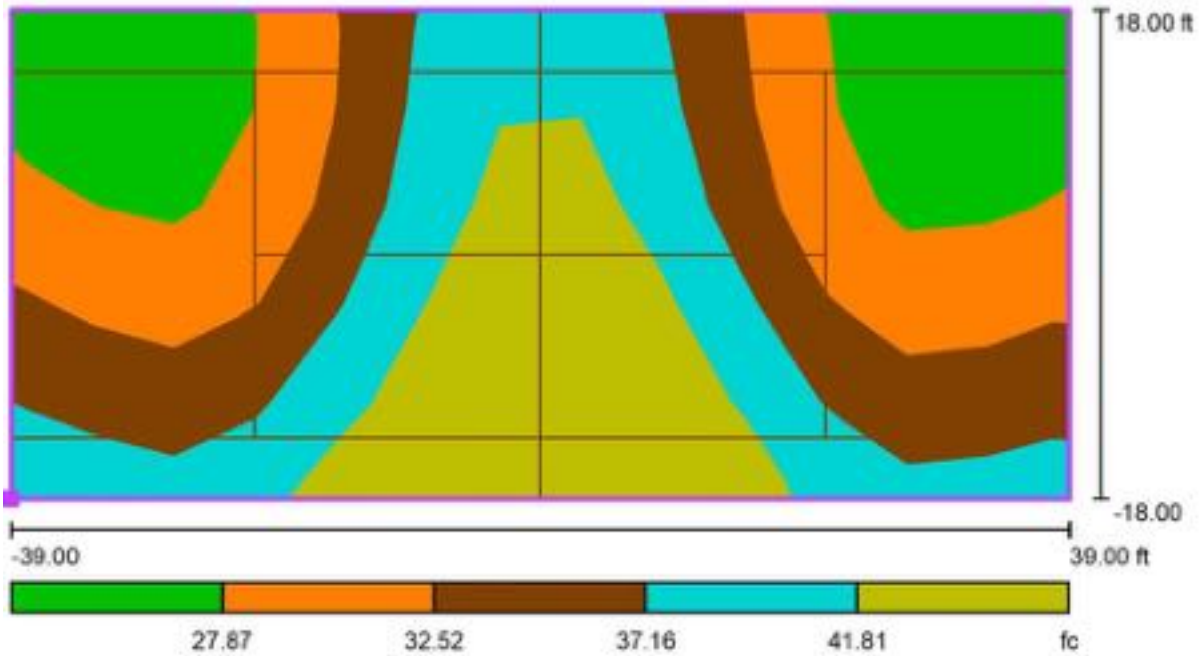
Position of surface in external scene:  
 Marked point: (21.535 ft, 11.000 ft,  
 0.000 ft)



Grid: 13 x 5 Points

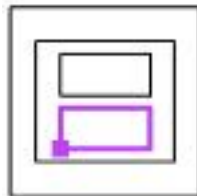
$E_{av}$ [fc]	$E_{min}$ [fc]	$E_{max}$ [fc]	u0	$E_{min} / E_{max}$
35	25	46	0.71	1.40

Exterior Scene 1 / Tennis 2 Calculation Grid (PA) / Greyscale (E, Perpendicular)



Scale 1 : 170

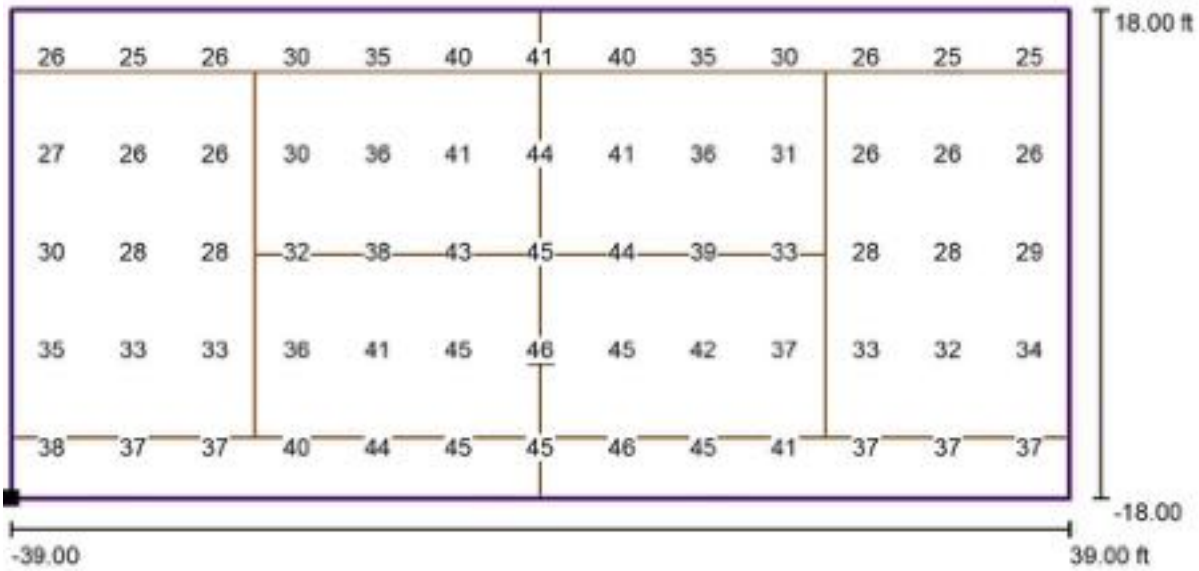
Position of surface in external scene:  
Marked point: (21.535 ft, 11.000 ft,  
0.000 ft)



Grid: 13 x 5 Points

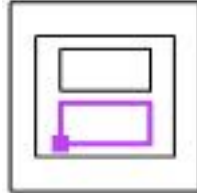
$E_{av}$ [fc]	$E_{min}$ [fc]	$E_{max}$ [fc]	$u_0$	$E_{min} / E_{max}$
35	25	46	0.71	1.40

## Exterior Scene 1 / Tennis 2 Calculation Grid (PA) / Value Chart (E, Perpendicular)



Values in Footcandles, Scale 1 : 170

Position of surface in external scene:  
 Marked point: (21.535 ft, 11.000 ft, 0.000 ft)



Grid: 13 x 5 Points

$E_{av}$  [fc]  
35

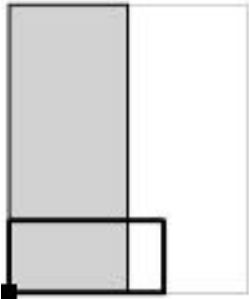
$E_{min}$  [fc]  
25

$E_{max}$  [fc]  
46

$u_0$   
0.71

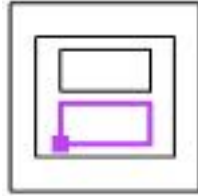
$E_{min} / E_{max}$   
1.40

## Exterior Scene 1 / Tennis 2 Calculation Grid (PA) / Table (E, Perpendicular)



Current Selection  
 Further Selections

Position of surface in external scene:  
 Marked point: (21.535 ft, 11.000 ft,  
 0.000 ft)



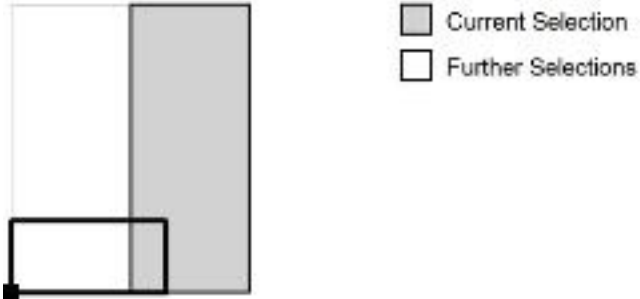
<b>32.400</b>	26	<u>25</u>	26	30	35	40	41	40	35	30
<b>25.200</b>	27	26	26	30	36	41	44	41	36	31
<b>18.000</b>	30	28	28	32	38	43	45	44	39	33
<b>10.800</b>	35	33	33	36	41	45	<u>46</u>	45	42	37
<b>3.600</b>	38	37	37	40	44	45	45	<u>46</u>	45	41
<b>ft</b>	<b>3.000</b>	<b>9.000</b>	<b>15.000</b>	<b>21.000</b>	<b>27.000</b>	<b>33.000</b>	<b>39.000</b>	<b>45.000</b>	<b>51.000</b>	<b>57.000</b>

Attention: The coordinates refer to the image above. Values in Footcandles.

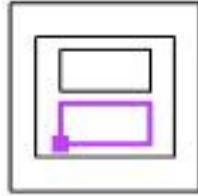
Grid: 13 x 5 Points

$E_{av}$ [fc]	$E_{min}$ [fc]	$E_{max}$ [fc]	u0	$E_{min} / E_{max}$
35	25	46	0.71	1.40

## Exterior Scene 1 / Tennis 2 Calculation Grid (PA) / Table (E, Perpendicular)



Position of surface in external scene:  
 Marked point: (21.535 ft, 11.000 ft, 0.000 ft)



<b>32.400</b>	26	<u>25</u>	<u>25</u>
<b>25.200</b>	26	26	26
<b>18.000</b>	28	28	29
<b>10.800</b>	33	32	34
<b>3.600</b>	37	37	37
<b>ft</b>	<b>63.000</b>	<b>69.000</b>	<b>75.000</b>

Attention: The coordinates refer to the image above. Values in Footcandles.

Grid: 13 x 5 Points

$E_{av}$ [fc]	$E_{min}$ [fc]	$E_{max}$ [fc]	u0	$E_{min} / E_{max}$
35	25	46	0.71	1.40