



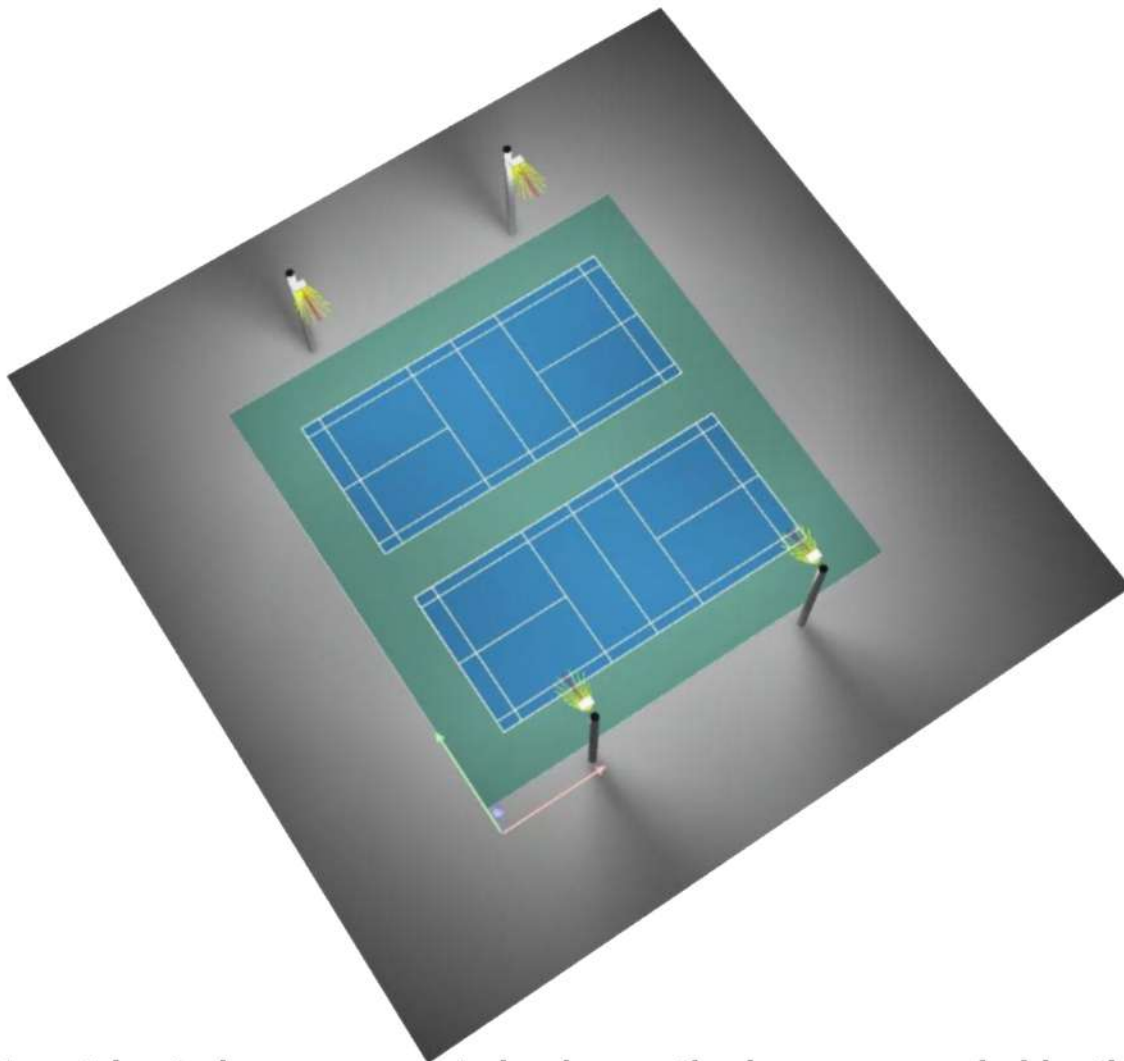
Twin Pickleball Court Lighting

3000 Kelvin LED Lights

Dark Sky Compliant with 3000 Kelvin LEDs**

(4) 25' Poles - (4) APTA 480s

Average 31 Footcandles and 1.44 Max/Min Rate



This photometric study was generated using methods recommended by the Illuminating Engineering Society of North America (IESNA). The calculations in this report are based on data provided by a third party. The accuracy of this report is dependent on the accuracy of the data provided. End user environment and application including but not limited to voltage variation and dirt accumulation can cause actual photometric performance to differ from the performance calculated using the data provided. This report is provided without warranty as to accuracy, completeness, reliability or otherwise. In no event will Access Fixtures be responsible for any loss resulting from use of this report.

**Dark Sky requirements may vary. 3000 Kelvin is a typical standard. 2200 Kelvin may be required. Check your local lighting ordinances. 3000 Kelvin LEDs will result in approximately 6% reduction in footcandles.



Operator
Telephone
Fax
e-Mail

Table of contents

| | |
|--|----|
| Twin Pickleball Courts | |
| Project Cover | 1 |
| Table of contents | 2 |
| Luminaire parts list | 3 |
| AF88X-PAD480-T4VS-30K-3535F-V2 | |
| Luminaire Data Sheet | 4 |
| Exterior Scene 1 | |
| Planning data | 5 |
| Luminaires (layout plan) | 6 |
| Luminaires (coordinates list) | 7 |
| 3D Rendering | 8 |
| False Colour Rendering | 9 |
| Exterior Surfaces | |
| PICKLE BALL 1 Calculation Grid (PA) | |
| Summary | 10 |
| Isolines (E, Perpendicular) | 11 |
| Greyscale (E, Perpendicular) | 12 |
| Value Chart (E, Perpendicular) | 13 |
| Table (E, Perpendicular) | 14 |
| PICKLE BALL 2 Calculation Grid (PA) | |
| Summary | 16 |
| Isolines (E, Perpendicular) | 17 |
| Greyscale (E, Perpendicular) | 18 |
| Value Chart (E, Perpendicular) | 19 |
| Table (E, Perpendicular) | 20 |

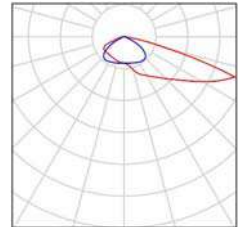


Operator
Telephone
Fax
e-Mail

Twin Pickleball Courts / Luminaire parts list

4 Pieces AF88X-PAD480-T4VS-30K-3535F-V2
Article No.:
Luminous flux (Luminaire): 59821 lm
Luminous flux (Lamps): 59818 lm
Luminaire Wattage: 461.8 W
Luminaire classification according to CIE: 100
CIE flux code: 32 69 96 100 100
Fitting: 1 x 3000K 3535F-V2 (Correction Factor
1.000).

See our luminaire
catalog for an image of
the luminaire.



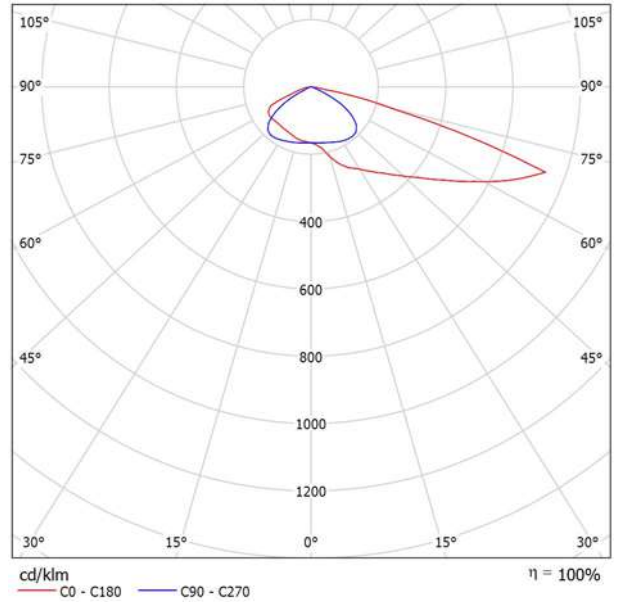


Operator
Telephone
Fax
e-Mail

AF88X-PAD480-T4VS-30K-3535F-V2 / Luminaire Data Sheet

Luminous emittance 1:

See our luminaire catalog for an image of the luminaire.



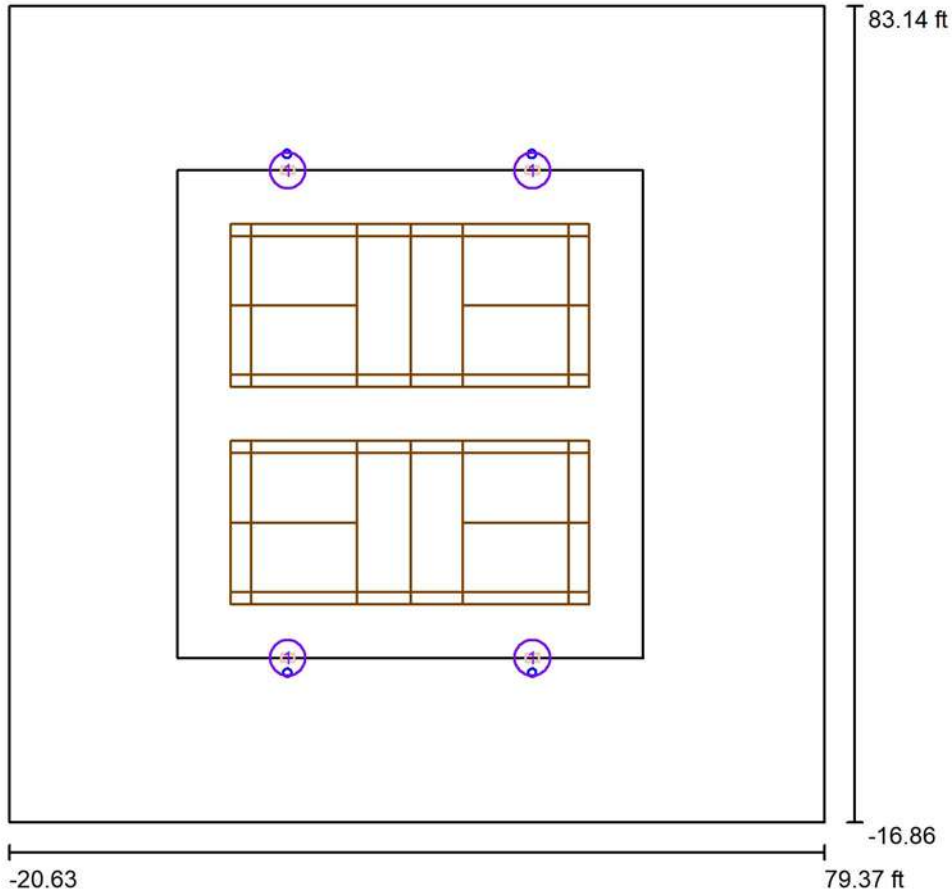
Luminaire classification according to CIE: 100
CIE flux code: 32 69 96 100 100

Due to missing symmetry properties, no UGR table can be displayed for this luminaire.



Operator
 Telephone
 Fax
 e-Mail

Exterior Scene 1 / Planning data



Maintenance factor: 0.90, ULR (Upward Light Ratio): 0.0%

Scale 1:283

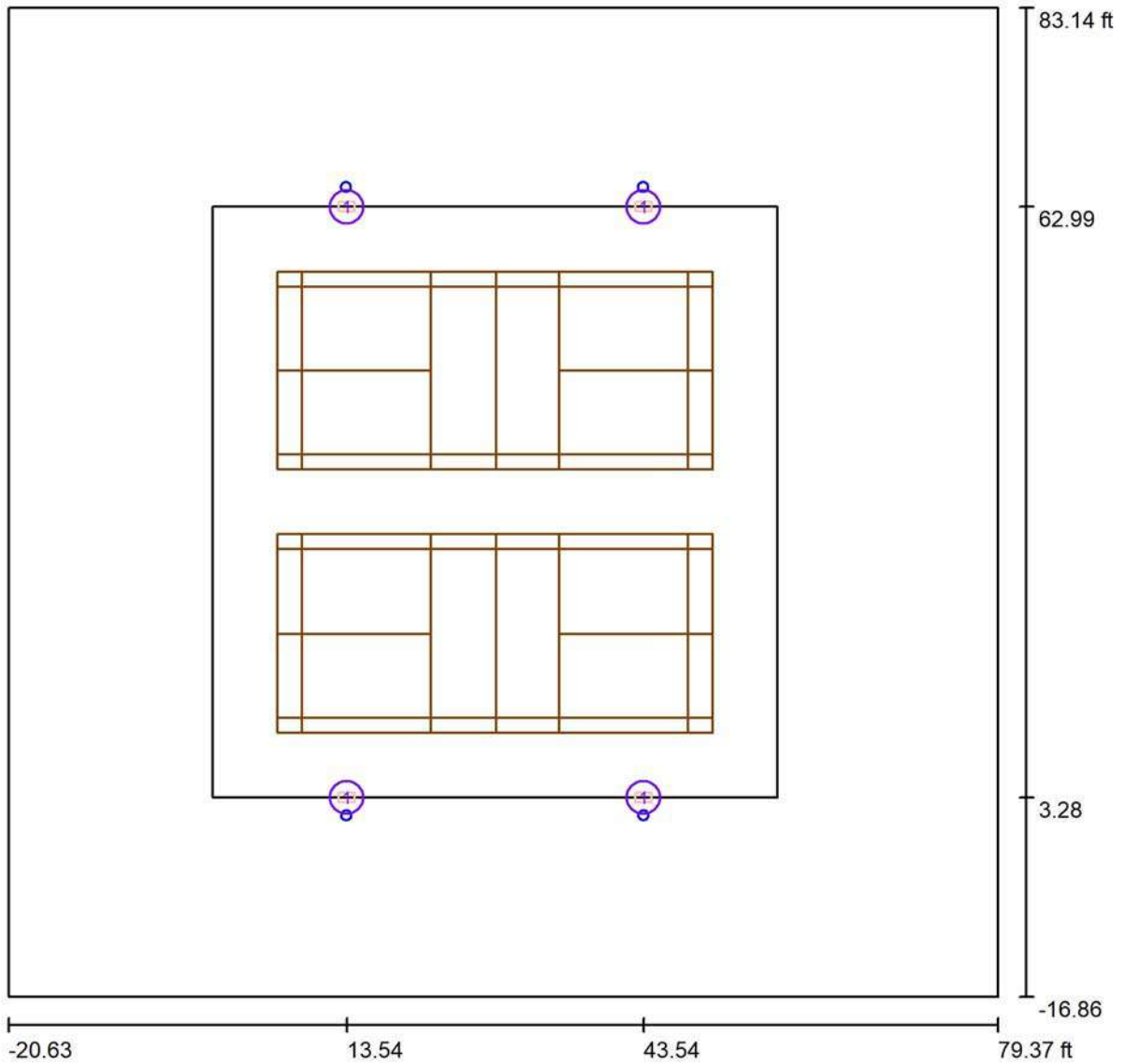
Luminaire Parts List

| No. | Pieces | Designation (Correction Factor) | Φ (Luminaire) [lm] | Φ (Lamps) [lm] | P [W] |
|--------|--------|--|--------------------|----------------|--------|
| 1 | 4 | AF88X-PAD480-T4VS-30K-3535F-V2 (1.000) | 59821 | 59818 | 461.8 |
| Total: | | | 239283 | 239271 | 1847.4 |



Operator
 Telephone
 Fax
 e-Mail

Exterior Scene 1 / Luminaires (layout plan)



Scale 1 : 218

Luminaire Parts List

| No. | Pieces | Designation |
|-----|--------|--------------------------------|
| 1 | 4 | AF88X-PAD480-T4VS-30K-3535F-V2 |

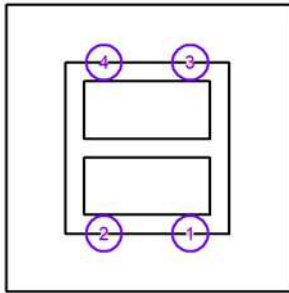


Operator
 Telephone
 Fax
 e-Mail

Exterior Scene 1 / Luminaires (coordinates list)

AF88X-PAD480-T4VS-30K-3535F-V2

59821 lm, 461.8 W, 1 x 1 x 3000K 3535F-V2 (Correction Factor 1.000).

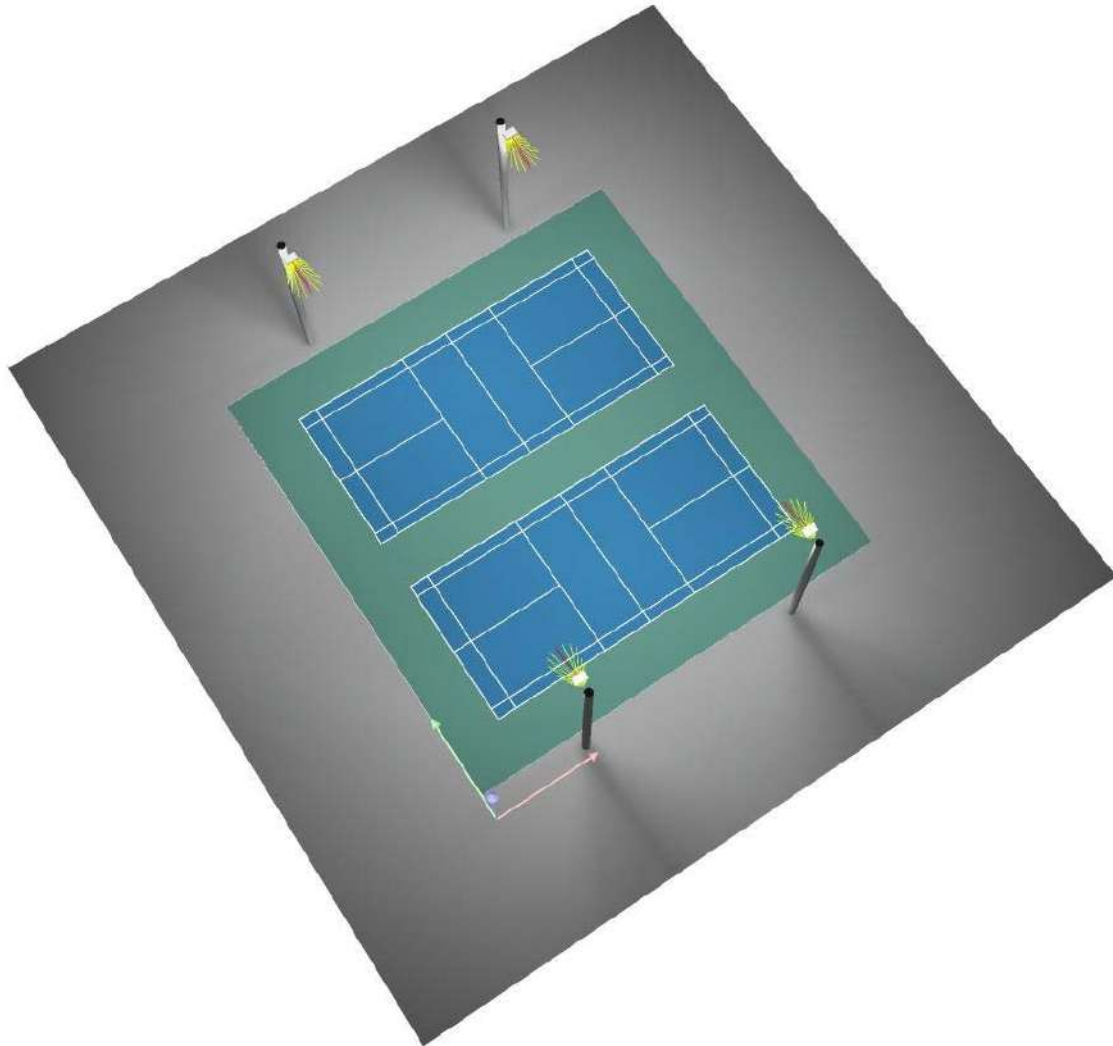


| No. | Position [ft] | | | Rotation [°] | | |
|-----|---------------|--------|--------|--------------|-----|-------|
| | X | Y | Z | X | Y | Z |
| 1 | 43.543 | 3.281 | 25.000 | 0.0 | 0.0 | 90.0 |
| 2 | 13.543 | 3.281 | 25.000 | 0.0 | 0.0 | 90.0 |
| 3 | 43.543 | 62.991 | 25.000 | 0.0 | 0.0 | -90.0 |
| 4 | 13.543 | 62.991 | 25.000 | 0.0 | 0.0 | -90.0 |



Operator
Telephone
Fax
e-Mail

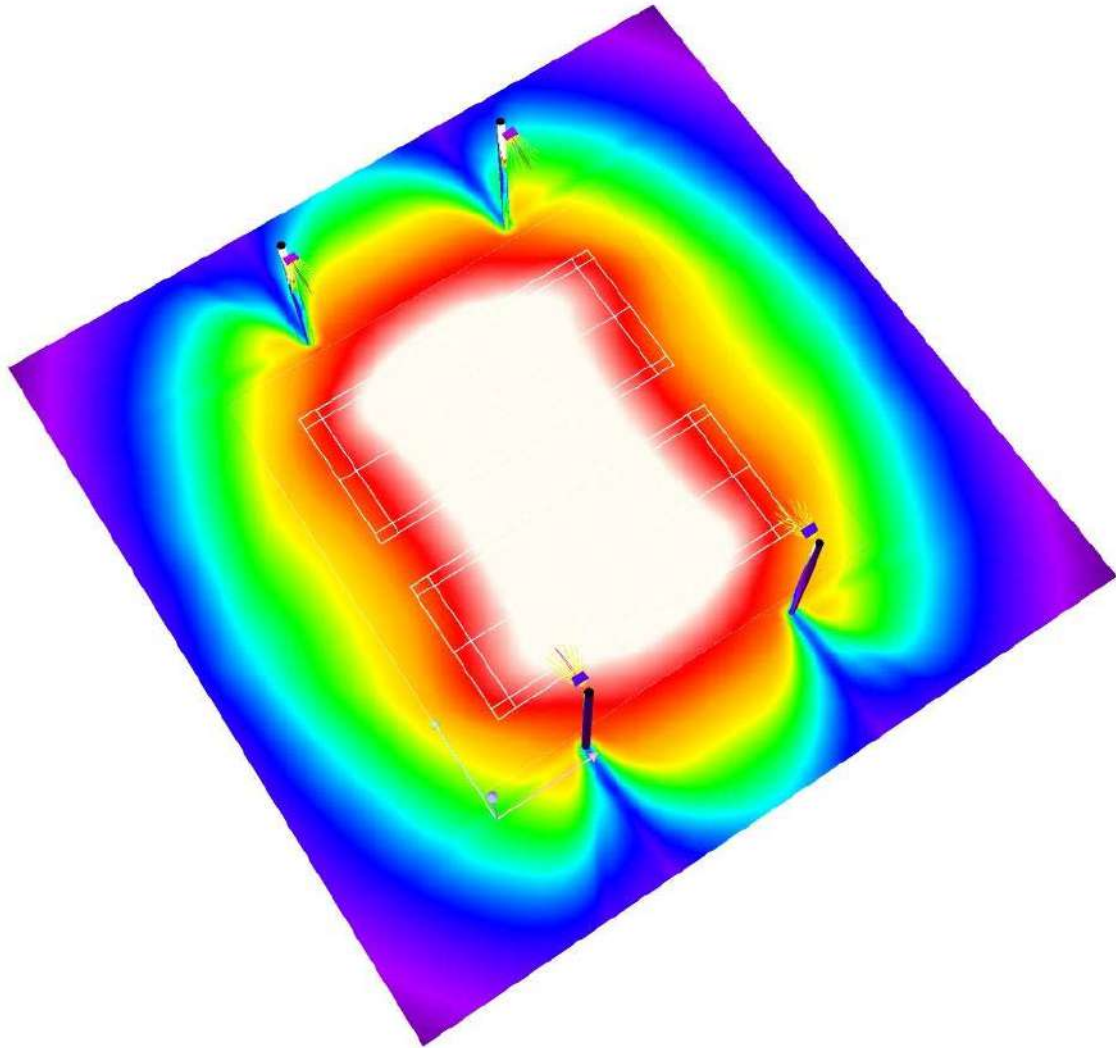
Exterior Scene 1 / 3D Rendering





Operator
Telephone
Fax
e-Mail

Exterior Scene 1 / False Colour Rendering



0

3.75

7.50

11.25

15.00

18.75

22.50

26.25

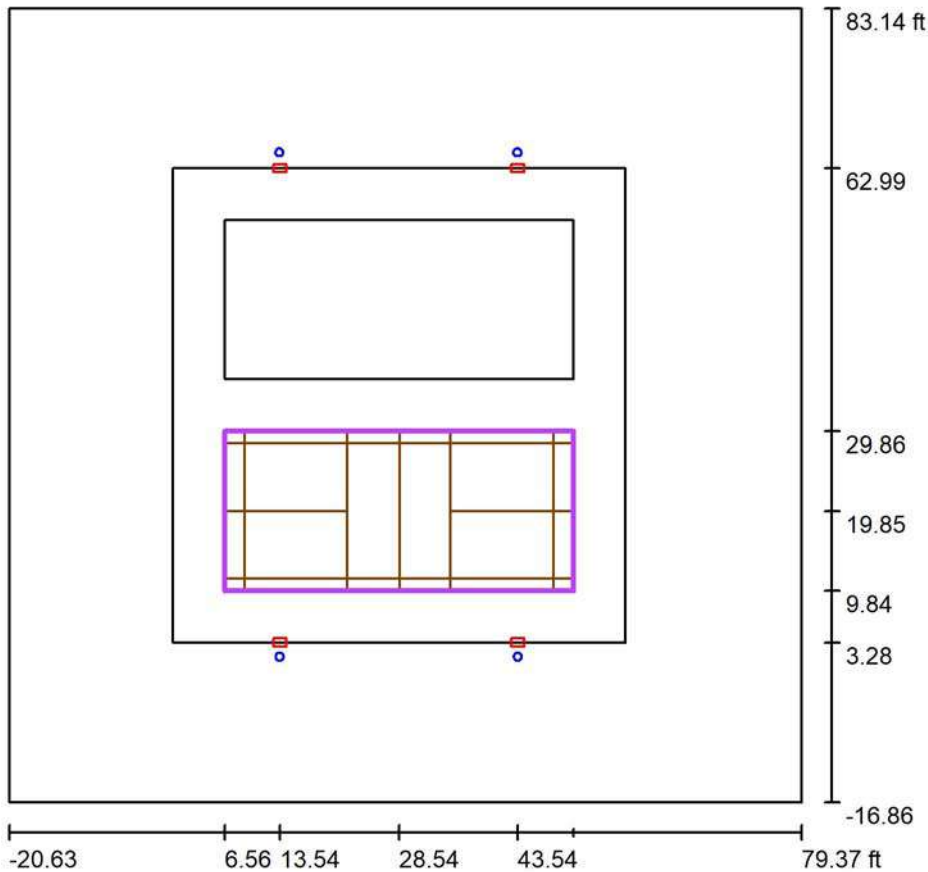
30.00

fc



Operator
Telephone
Fax
e-Mail

Exterior Scene 1 / PICKLE BALL 1 Calculation Grid (PA) / Summary



Scale 1 : 291

Position: (28.543 ft, 19.849 ft, 0.000 ft)
 Size: (43.963 ft, 20.013 ft)
 Rotation: (0.0°, 0.0°, 0.0°)
 Type: Normal, Grid: 11 x 5 Points
 Belongs to the following sport arena: PICKLE BALL 1

Results overview

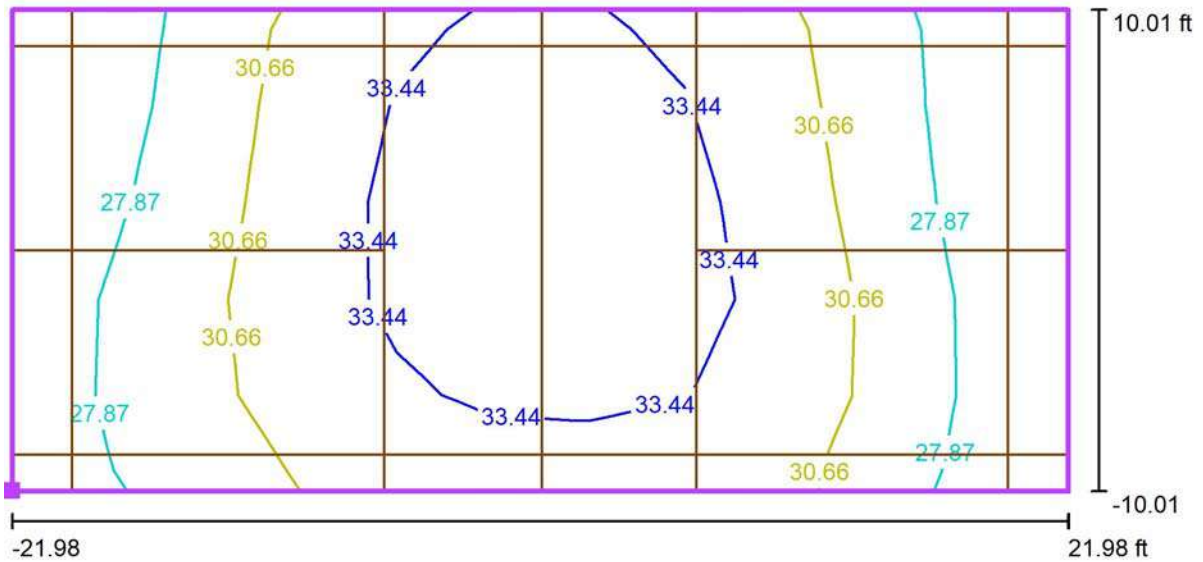
| No. | Type | E_{av} [fc] | E_{min} [fc] | E_{max} [fc] | u0 | E_{min} / E_{max} | $E_{h\ m} / E_m$ | H [ft] | Camera |
|-----|---------------|---------------|----------------|----------------|------|---------------------|------------------|--------|--------|
| 1 | perpendicular | 31 | 25 | 36 | 0.81 | 0.70 | / | 0.000 | / |

$E_{h\ m} / E_m$ = Relationship between middle horizontal and vertical illuminance, H = Measuring Height



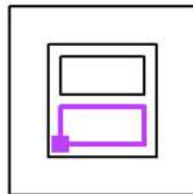
Operator
Telephone
Fax
e-Mail

Exterior Scene 1 / PICKLE BALL 1 Calculation Grid (PA) / Isolines (E, Perpendicular)



Values in Footcandles, Scale 1 : 96

Position of surface in external scene:
Marked point: (6.562 ft, 9.843 ft,
0.000 ft)



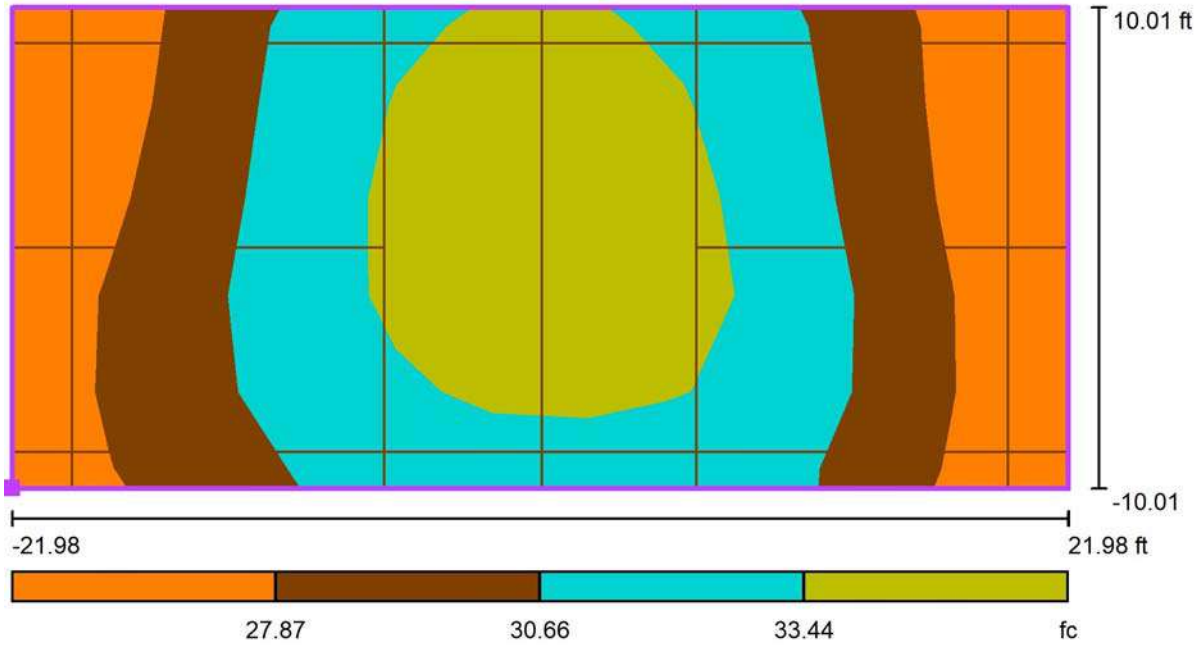
Grid: 11 x 5 Points

| | | | | |
|---------------|----------------|----------------|------|---------------------|
| E_{av} [fc] | E_{min} [fc] | E_{max} [fc] | u0 | E_{min} / E_{max} |
| 31 | 25 | 36 | 0.81 | 0.70 |



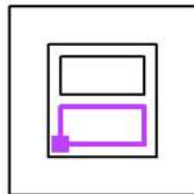
Operator
 Telephone
 Fax
 e-Mail

Exterior Scene 1 / PICKLE BALL 1 Calculation Grid (PA) / Greyscale (E, Perpendicular)



Scale 1 : 96

Position of surface in external scene:
 Marked point: (6.562 ft, 9.843 ft, 0.000 ft)



Grid: 11 x 5 Points

E_{av} [fc]
 31

E_{min} [fc]
 25

E_{max} [fc]
 36

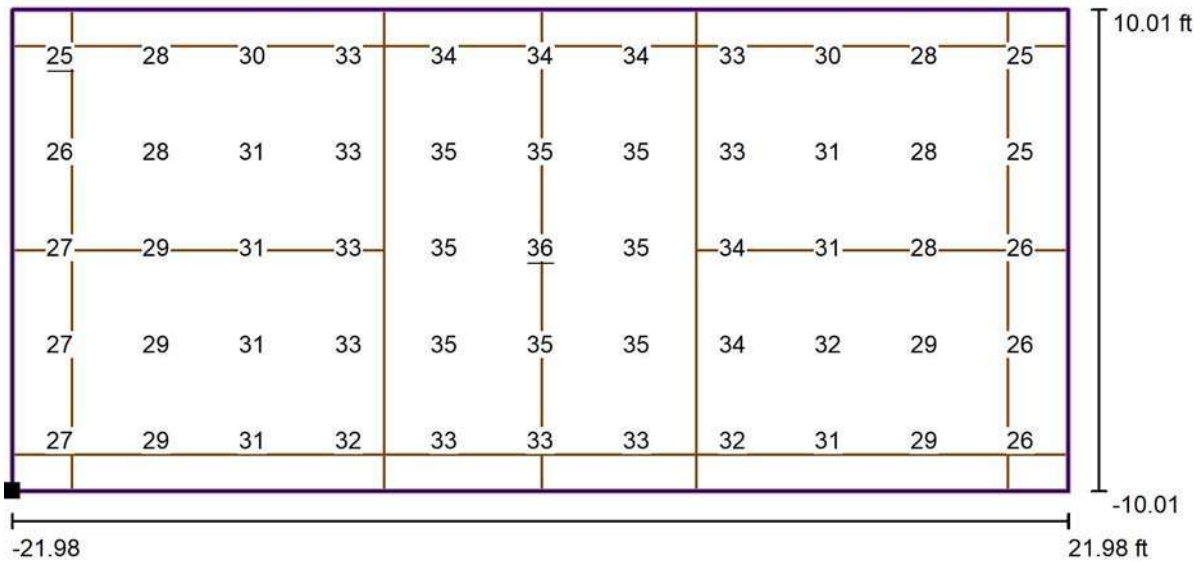
$u0$
 0.81

E_{min} / E_{max}
 0.70



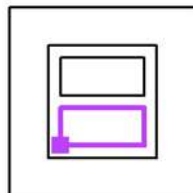
Operator
Telephone
Fax
e-Mail

Exterior Scene 1 / PICKLE BALL 1 Calculation Grid (PA) / Value Chart (E, Perpendicular)



Values in Footcandles, Scale 1 : 96

Position of surface in external scene:
Marked point: (6.562 ft, 9.843 ft, 0.000 ft)



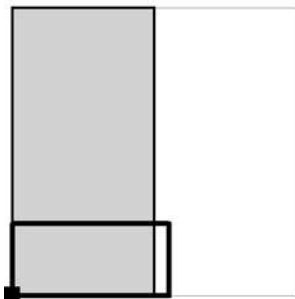
Grid: 11 x 5 Points

| | | | | |
|---------------|----------------|----------------|------|---------------------|
| E_{av} [fc] | E_{min} [fc] | E_{max} [fc] | u0 | E_{min} / E_{max} |
| 31 | 25 | 36 | 0.81 | 0.70 |



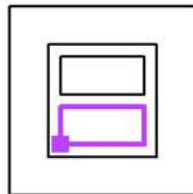
Operator
Telephone
Fax
e-Mail

Exterior Scene 1 / PICKLE BALL 1 Calculation Grid (PA) / Table (E, Perpendicular)



■ Current Selection
□ Further Selections

Position of surface in external scene:
Marked point: (6.562 ft, 9.843 ft,
0.000 ft)



| | | | | | | | | | | |
|---------------|--------------|--------------|--------------|---------------|---------------|---------------|---------------|---------------|---------------|---------------|
| 18.012 | <u>25</u> | 28 | 30 | 33 | 34 | 34 | 34 | 33 | 30 | 28 |
| 14.009 | 26 | 28 | 31 | 33 | 35 | 35 | 35 | 33 | 31 | 28 |
| 10.006 | 27 | 29 | 31 | 33 | 35 | <u>36</u> | 35 | 34 | 31 | 28 |
| 6.004 | 27 | 29 | 31 | 33 | 35 | 35 | 35 | 34 | 32 | 29 |
| 2.001 | 27 | 29 | 31 | 32 | 33 | 33 | 33 | 32 | 31 | 29 |
| ft | 1.998 | 5.995 | 9.992 | 13.988 | 17.985 | 21.981 | 25.978 | 29.975 | 33.971 | 37.968 |

Attention: The coordinates refer to the image above. Values in Footcandles.

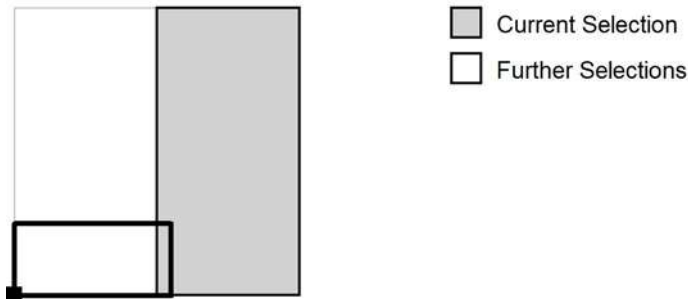
Grid: 11 x 5 Points

| | | | | |
|---------------|----------------|----------------|------|---------------------|
| E_{av} [fc] | E_{min} [fc] | E_{max} [fc] | u0 | E_{min} / E_{max} |
| 31 | 25 | 36 | 0.81 | 0.70 |

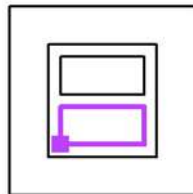


Operator
 Telephone
 Fax
 e-Mail

Exterior Scene 1 / PICKLE BALL 1 Calculation Grid (PA) / Table (E, Perpendicular)



Position of surface in external scene:
 Marked point: (6.562 ft, 9.843 ft,
 0.000 ft)



| | |
|------------------|-----------|
| 18.012 | <u>25</u> |
| 14.009 | <u>25</u> |
| 10.006 | 26 |
| 6.004 | 26 |
| 2.001 | 26 |
| ft 41.964 | |

Attention: The coordinates refer to the image above. Values in Footcandles.

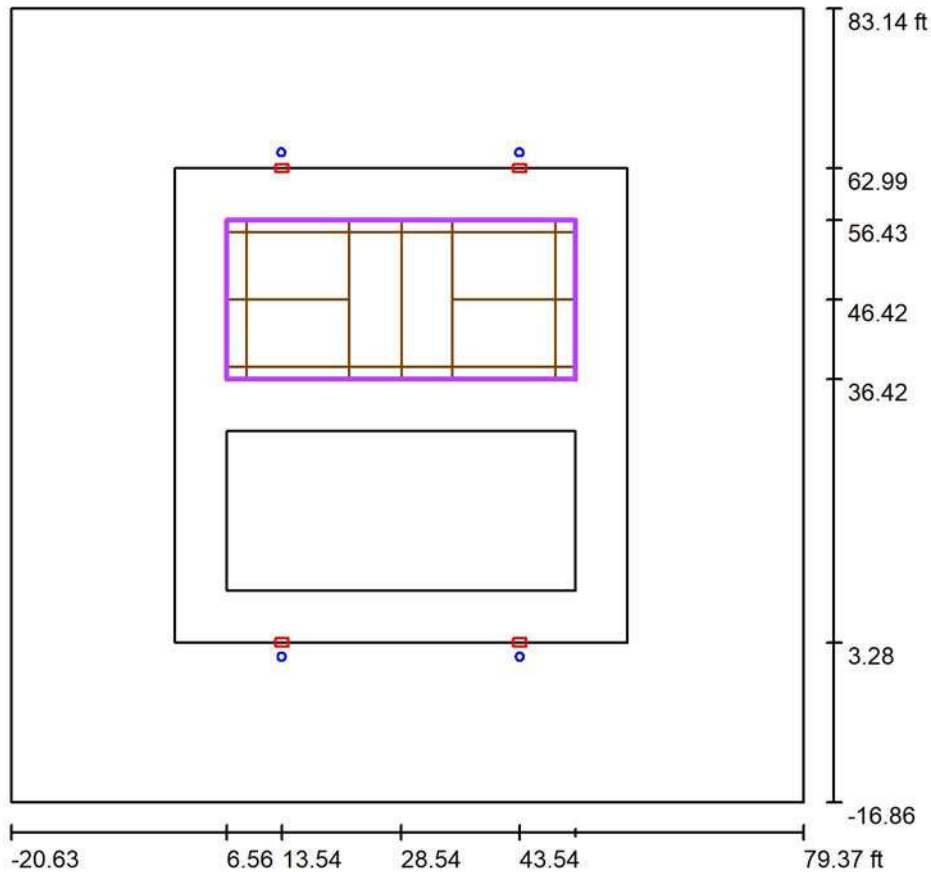
Grid: 11 x 5 Points

| | | | | |
|---------------|----------------|----------------|------|---------------------|
| E_{av} [fc] | E_{min} [fc] | E_{max} [fc] | u0 | E_{min} / E_{max} |
| 31 | 25 | 36 | 0.81 | 0.70 |



Operator
Telephone
Fax
e-Mail

Exterior Scene 1 / PICKLE BALL 2 Calculation Grid (PA) / Summary



Scale 1 : 291

Position: (28.543 ft, 46.423 ft, 0.000 ft)
 Size: (43.963 ft, 20.013 ft)
 Rotation: (0.0°, 0.0°, 0.0°)
 Type: Normal, Grid: 11 x 5 Points
 Belongs to the following sport arena: PICKLE BALL 2

Results overview

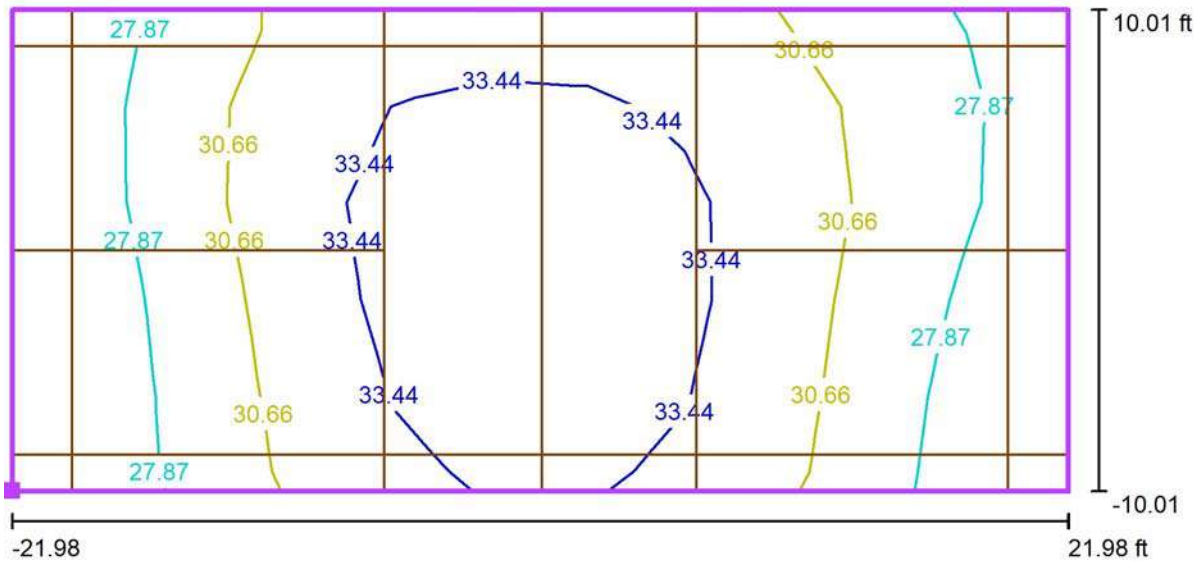
| No. | Type | E_{av} [fc] | E_{min} [fc] | E_{max} [fc] | u0 | E_{min} / E_{max} | $E_{h\ m} / E_m$ | H [ft] | Camera |
|-----|---------------|---------------|----------------|----------------|------|---------------------|------------------|--------|--------|
| 1 | perpendicular | 31 | 25 | 36 | 0.81 | 0.70 | / | 0.000 | / |

$E_{h\ m} / E_m$ = Relationship between middle horizontal and vertical illuminance, H = Measuring Height



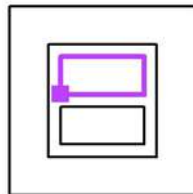
Operator
Telephone
Fax
e-Mail

Exterior Scene 1 / PICKLE BALL 2 Calculation Grid (PA) / Isolines (E, Perpendicular)



Values in Footcandles, Scale 1 : 96

Position of surface in external scene:
Marked point: (6.562 ft, 36.417 ft,
0.000 ft)



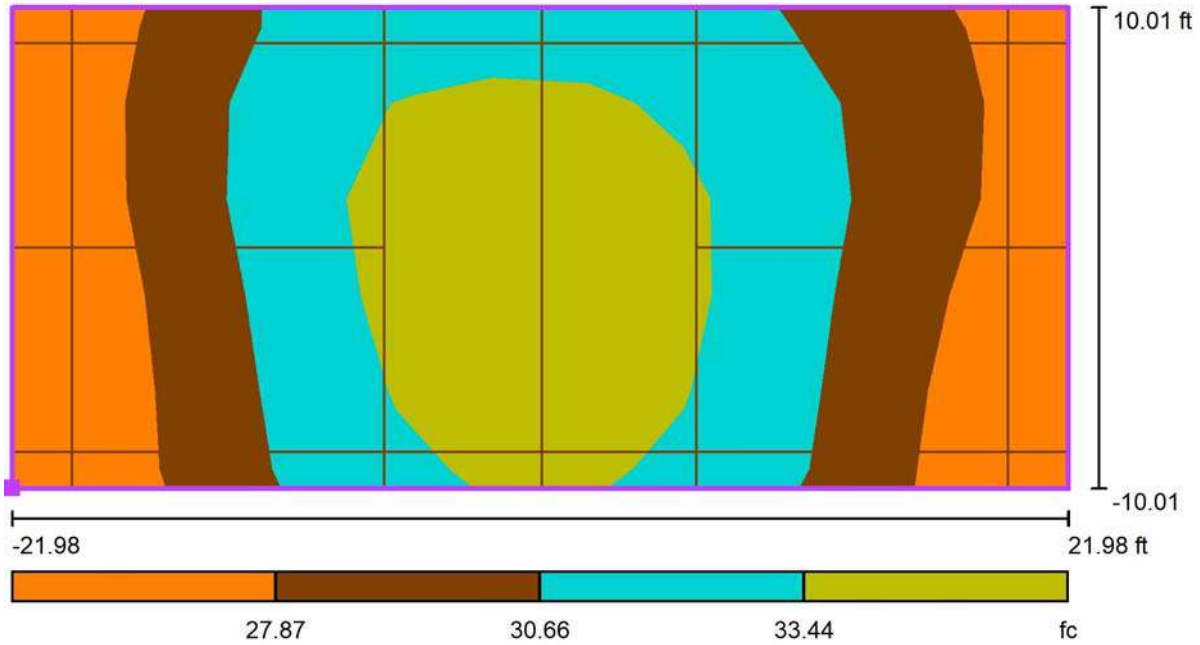
Grid: 11 x 5 Points

| | | | | |
|---------------|----------------|----------------|------|---------------------|
| E_{av} [fc] | E_{min} [fc] | E_{max} [fc] | u0 | E_{min} / E_{max} |
| 31 | 25 | 36 | 0.81 | 0.70 |



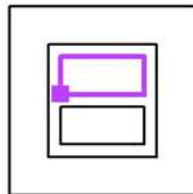
Operator
 Telephone
 Fax
 e-Mail

Exterior Scene 1 / PICKLE BALL 2 Calculation Grid (PA) / Greyscale (E, Perpendicular)



Scale 1 : 96

Position of surface in external scene:
 Marked point: (6.562 ft, 36.417 ft, 0.000 ft)



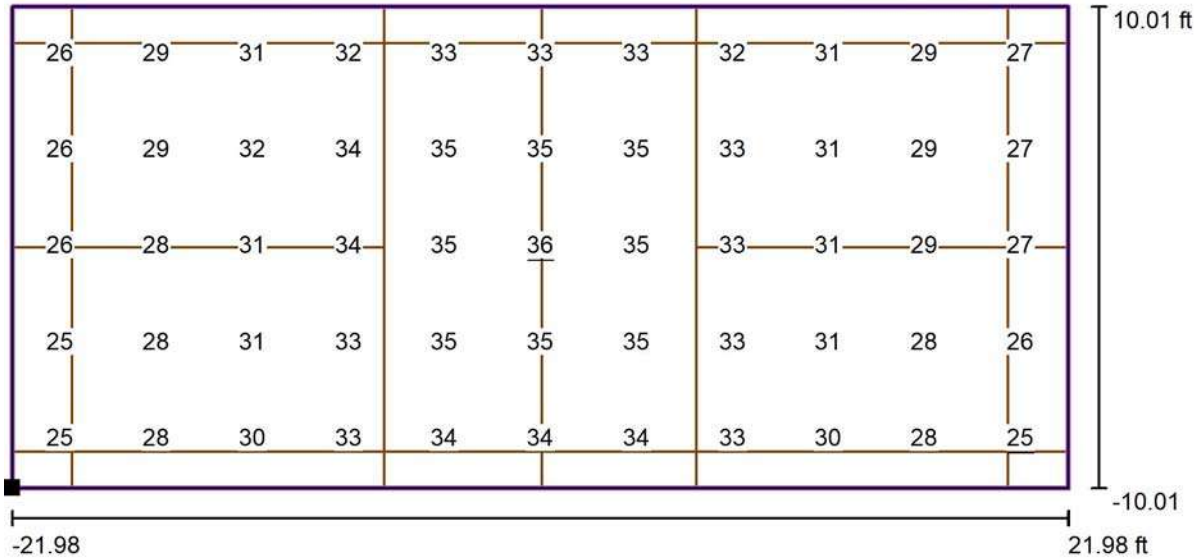
Grid: 11 x 5 Points

| | | | | |
|---------------|----------------|----------------|------|---------------------|
| E_{av} [fc] | E_{min} [fc] | E_{max} [fc] | u0 | E_{min} / E_{max} |
| 31 | 25 | 36 | 0.81 | 0.70 |



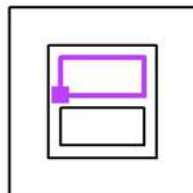
Operator
Telephone
Fax
e-Mail

Exterior Scene 1 / PICKLE BALL 2 Calculation Grid (PA) / Value Chart (E, Perpendicular)



Values in Footcandles, Scale 1 : 96

Position of surface in external scene:
Marked point: (6.562 ft, 36.417 ft, 0.000 ft)



Grid: 11 x 5 Points

| | | | | |
|---------------|----------------|----------------|------|---------------------|
| E_{av} [fc] | E_{min} [fc] | E_{max} [fc] | u0 | E_{min} / E_{max} |
| 31 | 25 | 36 | 0.81 | 0.70 |

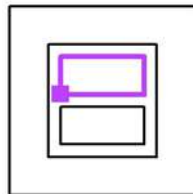


Operator
Telephone
Fax
e-Mail

Exterior Scene 1 / PICKLE BALL 2 Calculation Grid (PA) / Table (E, Perpendicular)



Position of surface in external scene:
Marked point: (6.562 ft, 36.417 ft, 0.000 ft)



| | | | | | | | | | | |
|---------------|--------------|--------------|--------------|---------------|---------------|---------------|---------------|---------------|---------------|---------------|
| 18.012 | 26 | 29 | 31 | 32 | 33 | 33 | 33 | 32 | 31 | 29 |
| 14.009 | 26 | 29 | 32 | 34 | 35 | 35 | 35 | 33 | 31 | 29 |
| 10.006 | 26 | 28 | 31 | 34 | 35 | <u>36</u> | 35 | 33 | 31 | 29 |
| 6.004 | <u>25</u> | 28 | 31 | 33 | 35 | 35 | 35 | 33 | 31 | 28 |
| 2.001 | <u>25</u> | 28 | 30 | 33 | 34 | 34 | 34 | 33 | 30 | 28 |
| ft | 1.998 | 5.995 | 9.992 | 13.988 | 17.985 | 21.981 | 25.978 | 29.975 | 33.971 | 37.968 |

Attention: The coordinates refer to the image above. Values in Footcandles.

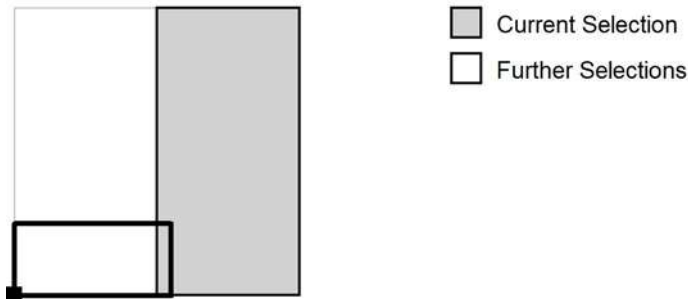
Grid: 11 x 5 Points

| | | | | |
|---------------|----------------|----------------|-------|---------------------|
| E_{av} [fc] | E_{min} [fc] | E_{max} [fc] | u_0 | E_{min} / E_{max} |
| 31 | 25 | 36 | 0.81 | 0.70 |

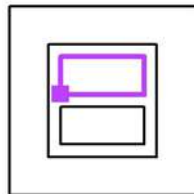


Operator
 Telephone
 Fax
 e-Mail

Exterior Scene 1 / PICKLE BALL 2 Calculation Grid (PA) / Table (E, Perpendicular)



Position of surface in external scene:
 Marked point: (6.562 ft, 36.417 ft,
 0.000 ft)



18.012 27
 14.009 27
 10.006 27
 6.004 26
 2.001 25
ft 41.964

Attention: The coordinates refer to the image above. Values in Footcandles.

Grid: 11 x 5 Points

| | | | | |
|---------------|----------------|----------------|------|---------------------|
| E_{av} [fc] | E_{min} [fc] | E_{max} [fc] | u0 | E_{min} / E_{max} |
| 31 | 25 | 36 | 0.81 | 0.70 |