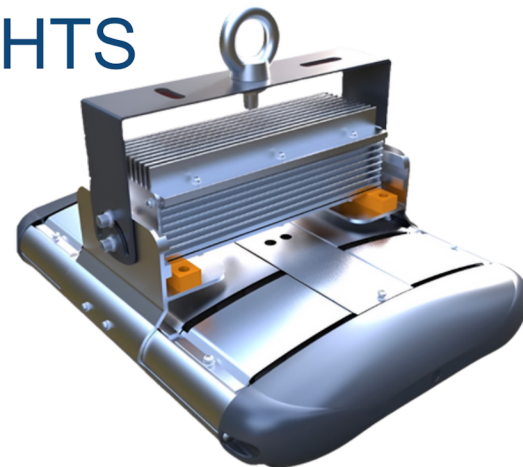


HAWT

LED HEAT RESISTANT HIGH BAY LIGHTS



EXTREME-LIFE:

L70 @ 100,000 hours at 80°C/176°F with attached LED driver and 100°C/212°F with a remote LED driver.

INDUSTRIAL STRENGTH:

Field repairable and rated IP66 for wet location, 1K10 impact resistance, and 3 or 5G for vibration.

CUSTOM OPTICS:

Photometric design service and 15 different optics available to get the light on the work surface where it is needed.



Heavy Duty Industry



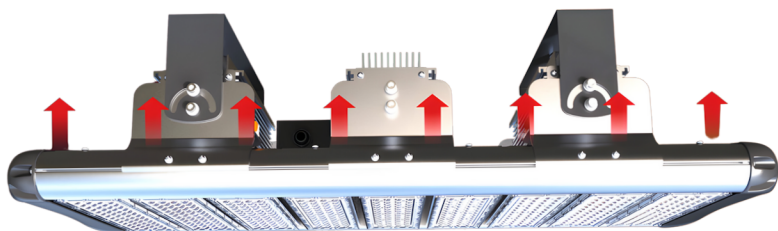
Chemical Industry



Metal Treatment



Oil and Gas Industry



Designed for operation in an environment with ambient temperature up to 100°C/212°F, The low-profile, rugged Edge fixture is a worry-free, low maintenance lamp for maximum reliability, durability and shock, vibration and vandalism resistance, even in the harshest environment.

The HAWT High Temperature LED High Bay establishes a benchmark in the industry, delivering top-tier energy efficiency and resilience for prolonged and reliable performance in industrial settings with elevated ambient temperatures. This includes applications in Manufacturing, Power Generation, Water and Wastewater, Pulp and Paper, Metals and Mining, Chemical and Petrochemical, as well as Oil and Gas.



SPECIFICATIONS

MODEL	POWER	EFFICACY(IES)	TOTAL LUMEN	DIMENSIONS	NET WEIGHT
AF44XEOEO-ED-50HT50	50w	140LPW	7,000lm	273x366x245mm	5.2kg/11.5lbs
AF44XEOEO-ED-100HT100	100w	140LPW	14,000lm	308x366x245mm	7.8kg/17.2lbs
AF44XEOEO-ED-150HT150	150w	140LPW	21,000lm	402x366x245mm	9.3kg/20.5lbs
AF44XEOEO-ED-200HT200	200w	140LPW	28,000lm	496x366x245mm	10.7kg/23.6lbs
AF44XEOEO-ED-300HT300	300w	140LPW	42,000lm	684x366x245mm	16.5kg/36.4lbs
AF44XEOEO-ED-450HT450	450w	140LPW	63,000lm	966x366x245mm	28.0kg/61.7lbs

PERFORMANCE DATA

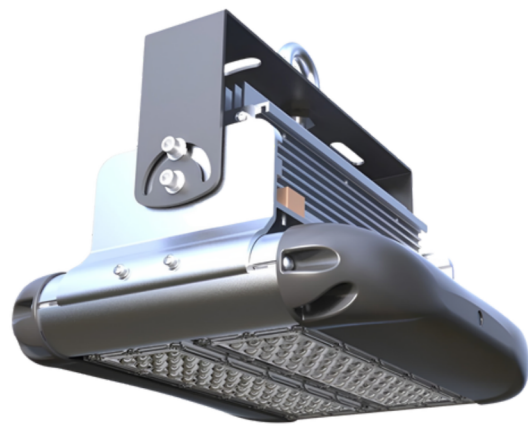
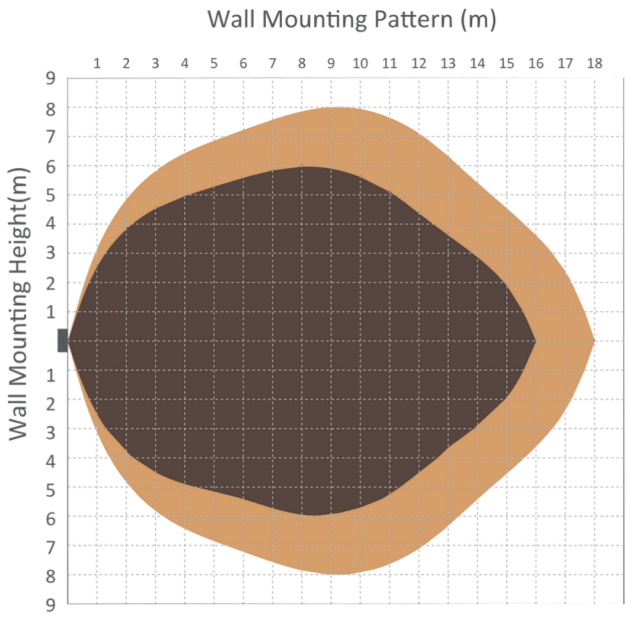
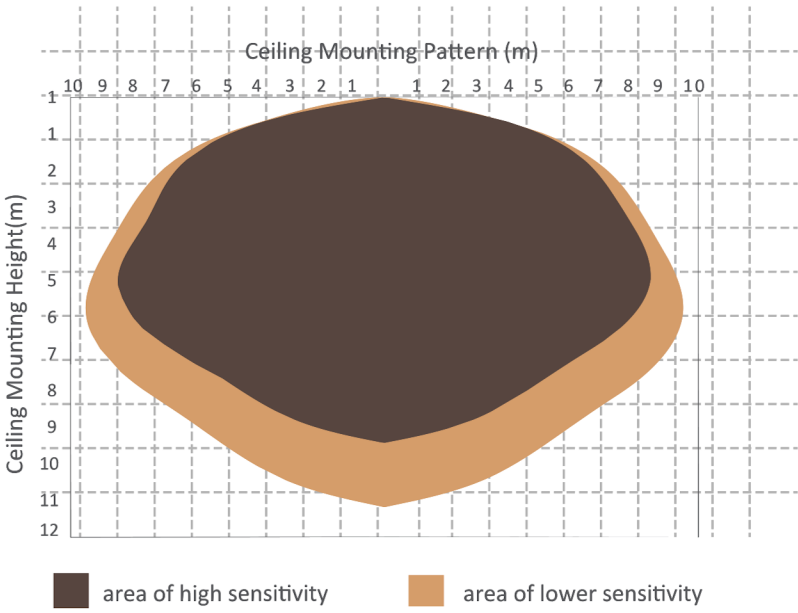
LED Chip and CRI	Phillips Lumileds and Ra70
Input Voltage	100-277VAC/ 200-400VAC
CCT	2700K,3000K,3500K,4000K,5000K
Beam Angle	20°/30°/50°/90°/110°/150°/30x100°/60x100° 130x70°/70x135°/75x145°/60x150°/73x133°
IP rating and IK rating	IP66 and IK10
Power Factor	0.95 minimum
THD	20%Max
Housing	Aluminum Alloy
Work Temp	Max to 80°C/176°F, fixture with driver together.Max to 100°C/212°F, fixture with remote driver
Mounting Option	Standard U bracket (Hang Ring)
Warranty	5 year warranty / 10 year warranty [optional]



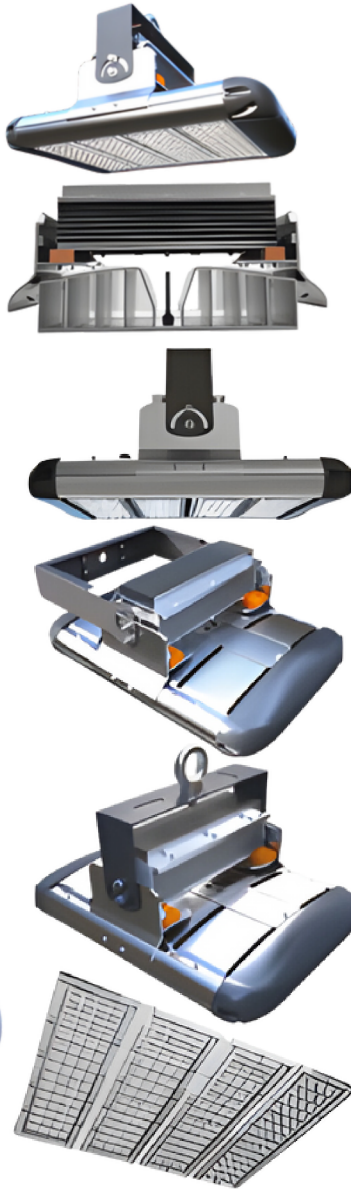
TECHNICAL DATA

OPERATING VOLTAGE	120-277V	STANDBY POWER	approx. 0.5w
SWITCHED POWER	Max.capacitive load: 800W@277V, 400W@120V	WARM TIME	20s
DETECTION AREA	10/50/75/100%, can be customized	DETECTION RANGE	max. 18m x 10m
HOLD TIME	55/305/1min/5min/10min/20min/30min, can be customized	MOUNTING HEIGHT	max. 10m
STANDBY PERIOD	0s/10s/1min/5min/10min/30min/1h/+ can be customized	CERTIFICATE	ETL, FCC
STANDBY DIMMING LEVEL	10%/ 20%/30%/50% can be customized		
OPERATING TEMPERATURE	-35°C ~ +70°C		
IP RATING	IP65 rated		

DETECTION PATTERN



PRODUCT FEATURES AND IMAGES



A durable thermal management system guarantees stable operation even in ambient temperatures of 80°C to 100°C.

Performance longevity with an L70 rating at 100,000 hours..

Designed for the most challenging environments with a IP66-rated for wet locations and IK10 impact-resistant.

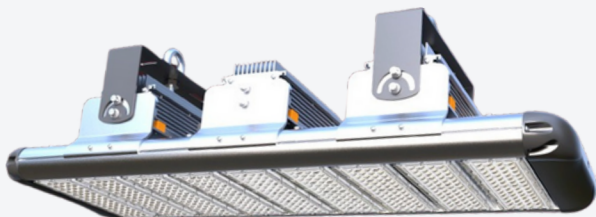
Vibration-rated for demanding applications, whether in 3G or 5G.

Versatile hanging ring or universal bracket suitable for indoor and outdoor installations of any kind.

15 types of optic lens at choice.



9 Modules ~ 450W



6 Modules ~ 300W



4 Modules ~ 200W



3 Modules ~ 150W



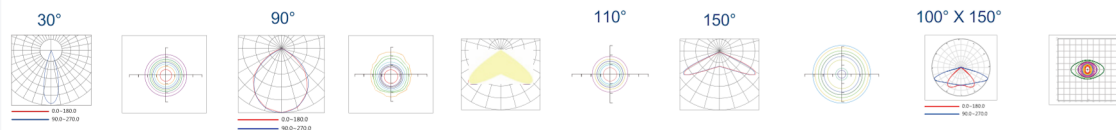
2 Modules ~ 100W



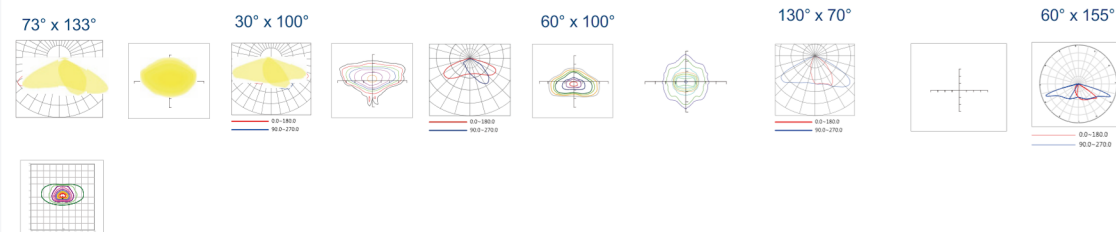
1 Module ~ 50W

PHOTOMETRICS

ROUND LIGHT SPOT



RECTANGULAR LIGHT SPOT



INSTALLATION

For high performance and long term reliability, the light should be installed in free air.

Hanging Ring Mount

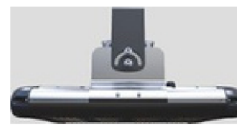
1. Tighten the NUT attached to the hanging ring to ensure the hanging ring is securely connected to the light fixture.
2. Hang the ring to the field supplied by the mounting hook or chain.
3. Wiring.(Connect supply wires to luminaire wire leads per the wiring diagram using methods that comply with all applicable codes.)

Universal Bracket

1. Rotate the bracket to the desired angle and tighten screw to lock it.
2. Bolt the universal mounting bracket to the field mounting point. Bolt the center point before the two side points. Tighten the bolts to wrench tight.
3. Wiring.(Connect supply wires to luminaire wire leads per the wiring diagram using methods that comply with all applicable codes.)



Hanging Ring



180°U Bracket



360°Heavy Duty U Bracket



360°Heavy Duty U Bracket + Slip Fitter