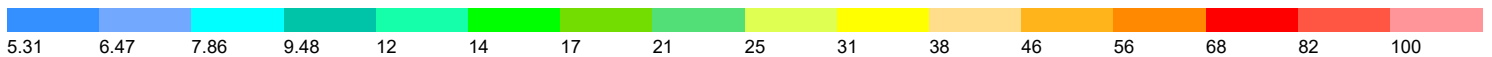
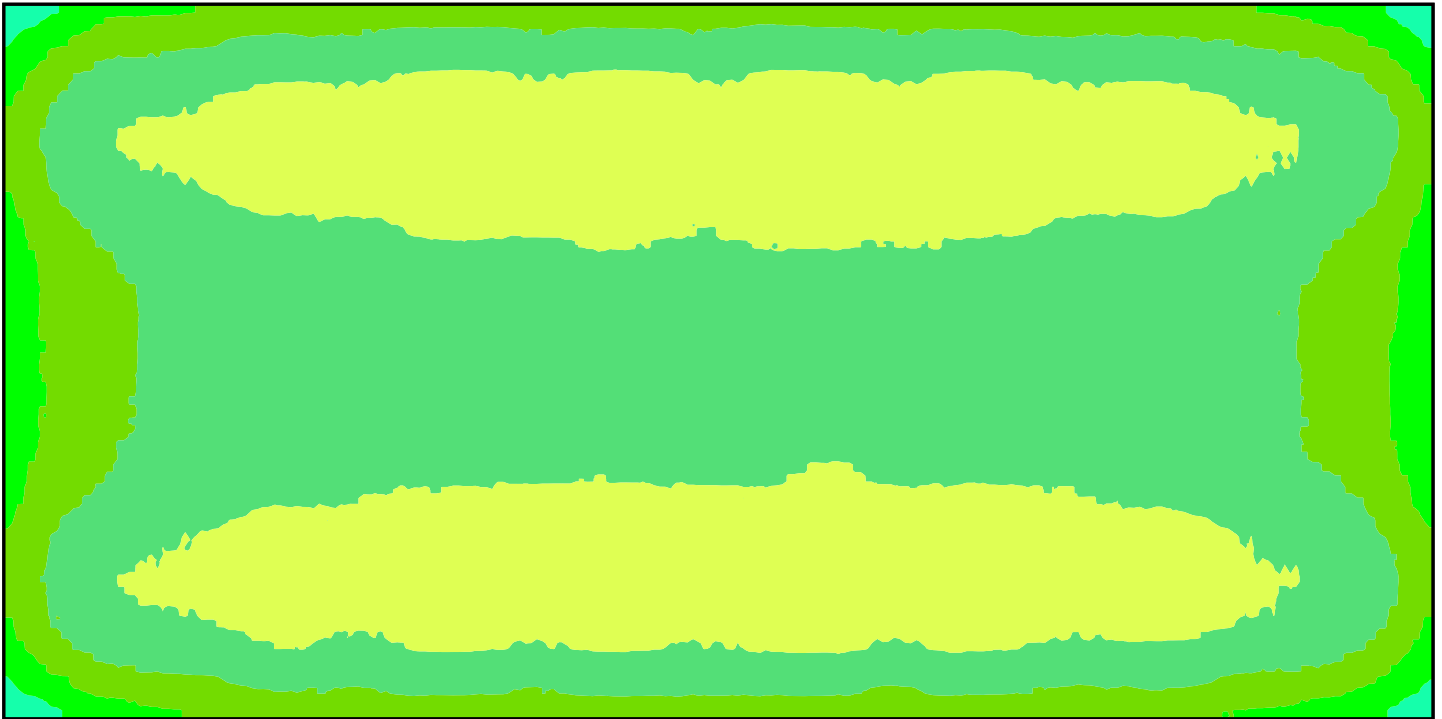


100' x 200' Indoor Arena
25' and 35' Mounting Height
23.7fc - 2.43 Max/Min



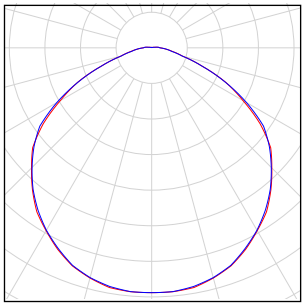
This photometric report will be generated using methods recommended by the Illuminating Engineering Society of North America (IESNA). The calculations in this report will be based on data provided by a third party. The accuracy of this photometric report is dependent on the accuracy of the data provided. Enduser environment and application (including, but not limited to voltage variation and dirt accumulation) can cause actual photometric performance to differ from the performance calculated using the data provided. This report will be provided without warranty as to accuracy, completeness, reliability, or otherwise. In no event will Access Fixtures be responsible for any loss resulting from any use of this report.

Content

100'x200' Indoor Arena

Luminaire list.....	3
Views.....	4
Site 1	
Building 1	
Storey 1	
Room 1	
Summary.....	6
Luminaire layout plan.....	7
Workplane (Room 1) / Perpendicular illuminance (adaptive).....	8

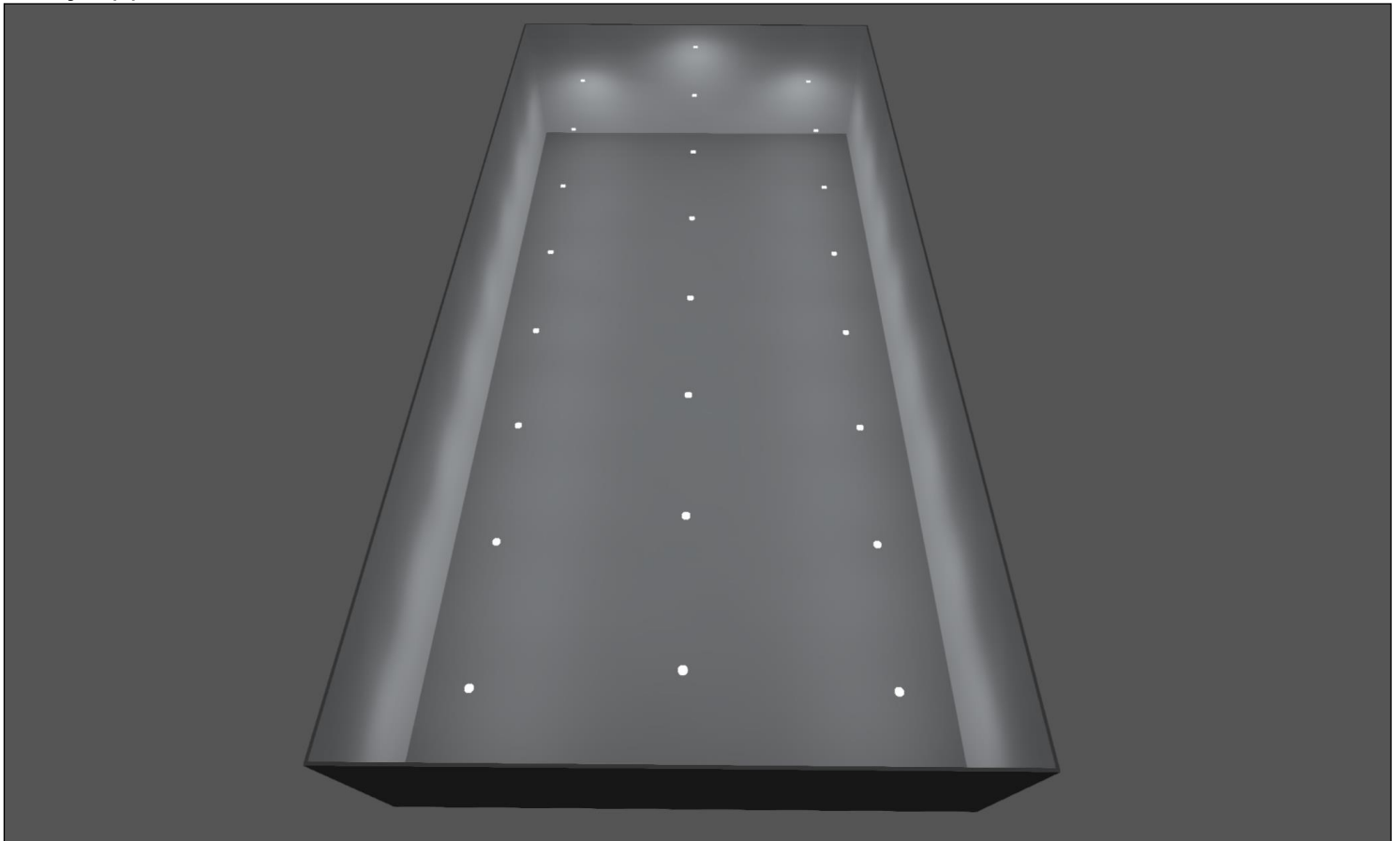
100'x200' Indoor Arena

Quantity	Luminaire (Luminous emittance)		
24	Access Fixtures - SYMO 212 AF55XLED-8500 L432 215W 5000K High-bay Luminaire with Refractor Lens Luminous emittance 1 Fitting: 1xLED Light output ratio: 99.89% Lamp luminous flux: 27679 lm Luminaire luminous flux: 27648 lm Power: 212.8 W Luminous efficacy: 129.9 lm/W Colorimetric data 1x: CCT 3000 K, CRI 100	<p>See our luminaire catalog for an image of the luminaire.</p>	

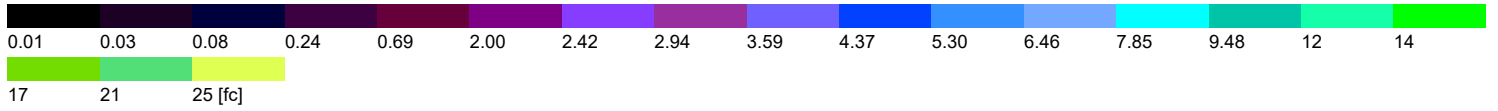
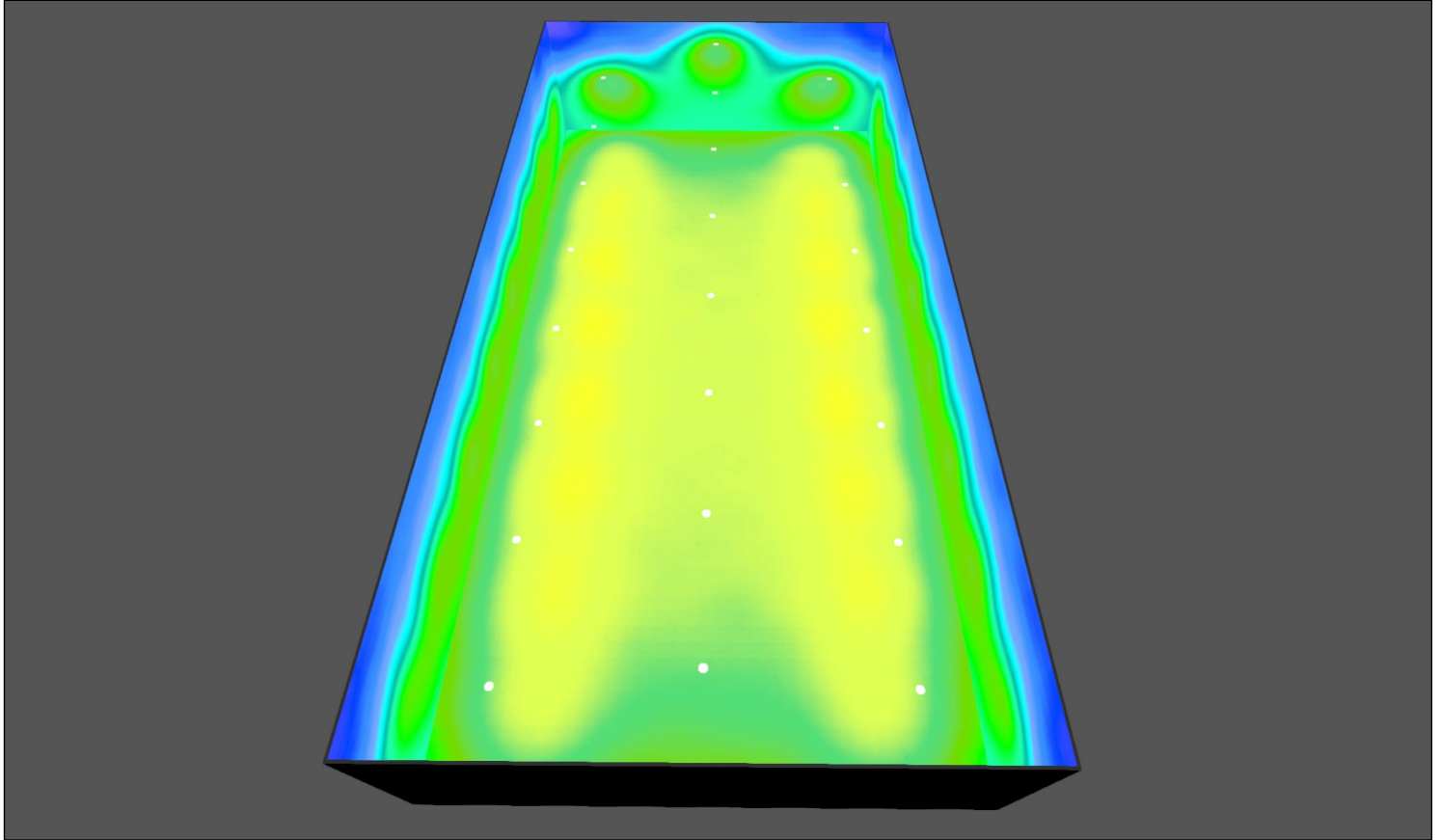
Total lamp luminous flux: 664296 lm, Total luminaire luminous flux: 663552 lm, Total Load: 5107.2 W, Luminous efficacy: 129.9 lm/W

100'x200' Indoor Arena

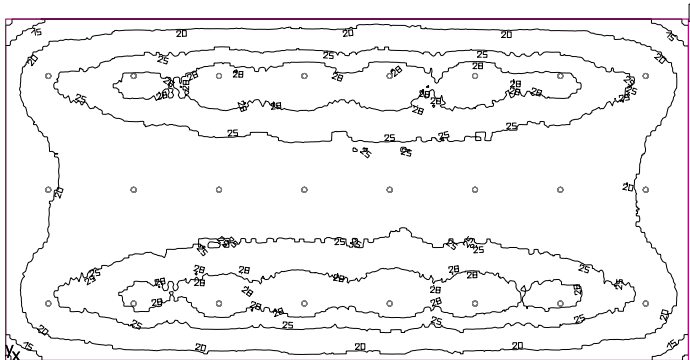
Storey 1 (1)



Storey 1 (2), Illuminance values in [fc]



Room 1



Clearance height: 35.000 ft, Reflection factors: Ceiling 70.0%, Walls 50.0%, Floor 20.0%, Light loss factor: 0.80

Workplane

Surface	Result	Average	Min	Max	Mean/Min	Max/Min
1 Workplane (Room 1)	Perpendicular illuminance (adaptive) [fc] Height: 0.000 ft, Wall zone: 0.000 ft	23.7	12.1	29.4	1.97	2.43

#	Luminaire	Φ(Luminaire) [lm]	Power [W]	Luminous efficacy [lm/W]
24	Access Fixtures - SYMO 212 AF55XLED-8500 L432 215W 5000K High-bay Luminaire with Refractor Lens	27648	212.8	129.9
Total via all luminaires		663552	5107.2	129.9

Lighting power density: 0.26 W/sq ft = 0.10 W/sq ft/10 fc (Floor area of room 20000.47 sq ft)

Consumption: 14050 kWh/a of maximum 65050 kWh/a

The energy consumption quantities do not take into account light scenes and their dimming levels.

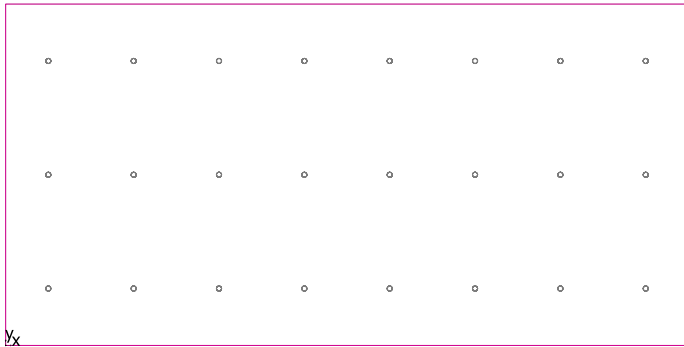
Room 1



Access Fixtures SYMO 212 AF55XLED-8500 L432 215W 5000K High-bay Luminaire with Refractor Lens

No.	X [ft]	Y [ft]	Mounting height [ft]	Light loss factor
1	187.500	83.333	25.000	0.80
2	162.500	83.333	25.000	0.80
3	137.500	83.333	25.000	0.80
4	112.500	83.333	25.000	0.80
5	87.500	83.333	25.000	0.80
6	62.500	83.333	25.000	0.80
7	37.500	83.333	25.000	0.80
8	12.500	83.333	25.000	0.80
9	187.500	50.000	35.000	0.80
10	162.500	50.000	35.000	0.80
11	137.500	50.000	35.000	0.80
12	112.500	50.000	35.000	0.80
13	87.500	50.000	35.000	0.80
14	62.500	50.000	35.000	0.80
15	37.500	50.000	35.000	0.80
16	12.500	50.000	35.000	0.80
17	187.500	16.667	25.000	0.80
18	162.500	16.667	25.000	0.80
19	137.500	16.667	25.000	0.80
20	112.500	16.667	25.000	0.80
21	87.500	16.667	25.000	0.80
22	62.500	16.667	25.000	0.80
23	37.500	16.667	25.000	0.80
24	12.500	16.667	25.000	0.80

Workplane (Room 1) / Perpendicular illuminance (adaptive)



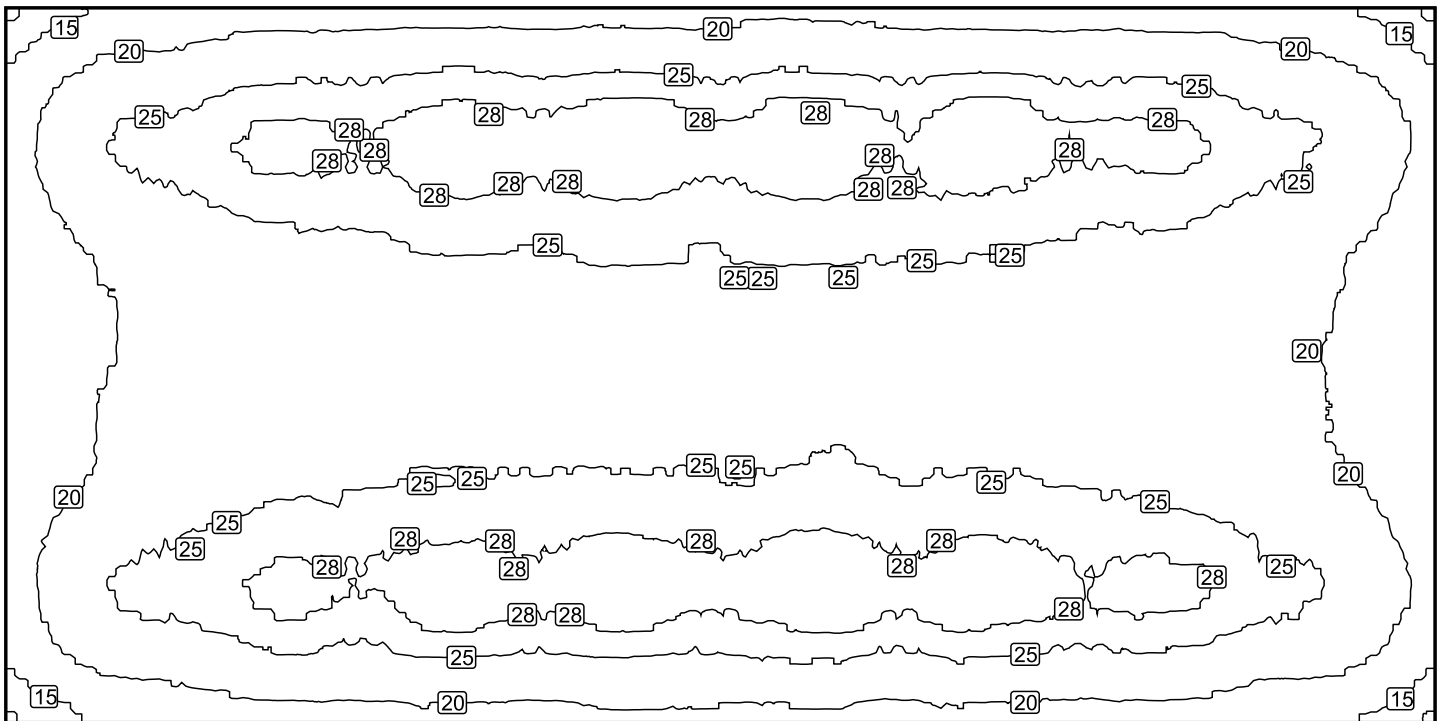
Workplane (Room 1): Perpendicular illuminance (adaptive) (Surface)

Light scene: Light scene 1

Average: 23.7 fc, Min: 12.1 fc, Max: 29.4 fc, Mean/Min: 1.97, Max/Min: 2.43

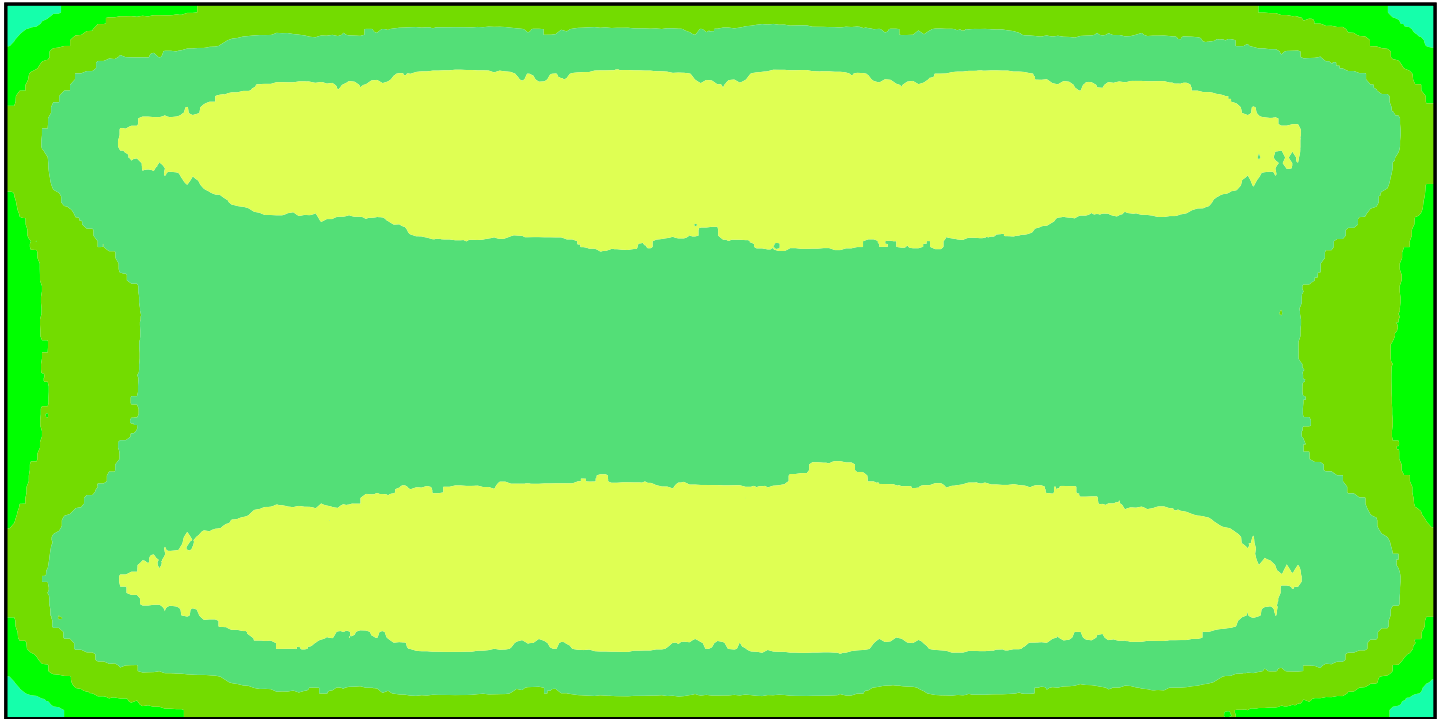
Height: 0.000 ft, Wall zone: 0.000 ft

Isolines [fc]



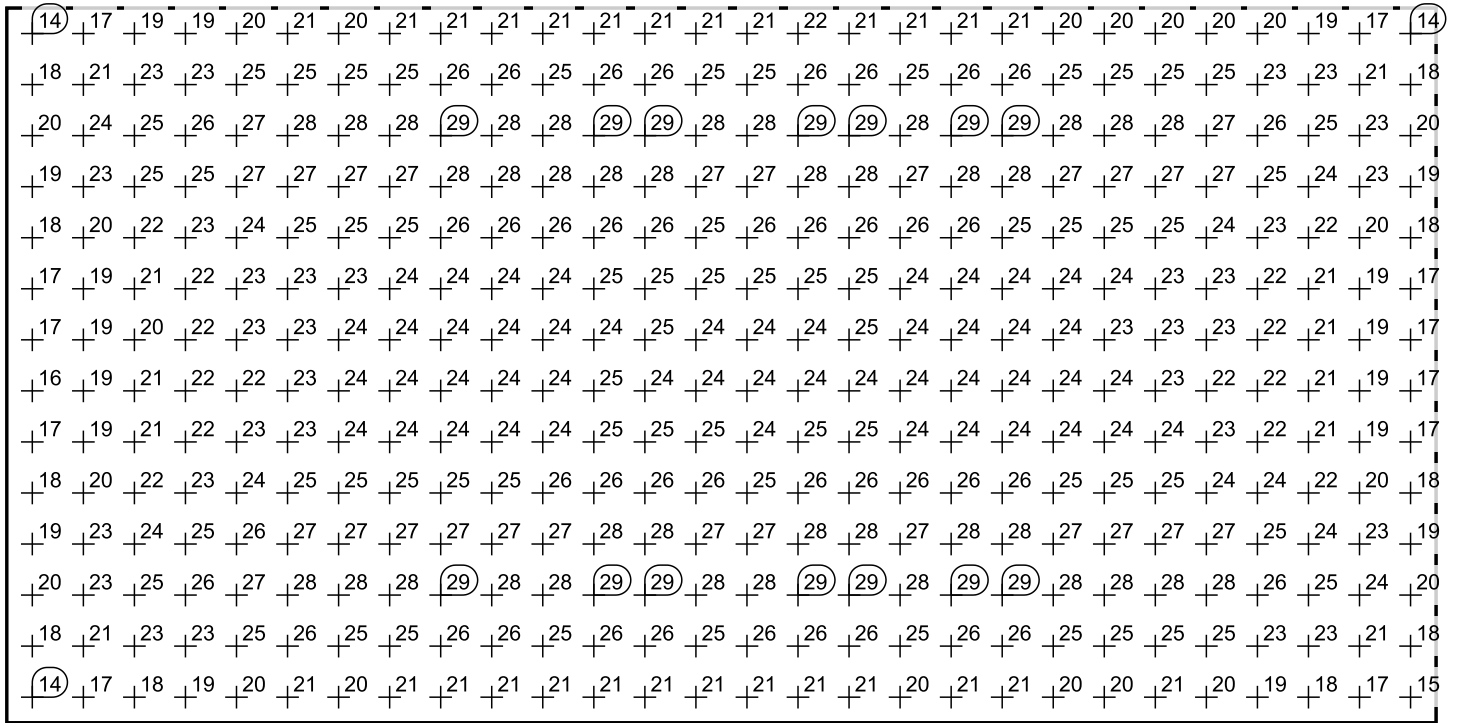
Scale: 1 : 322

False colors [fc]



Scale: 1 : 322

Value grid [fc]



Scale: 1 : 322