



Table of contents

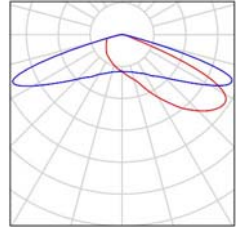
Bocce Courts Lighting Project ZM-2020-1161	
Project Cover	1
Table of contents	2
Luminaire parts list	3
Exterior Scene 1	
Planning data	4
Luminaires (layout plan)	5
Luminaires (coordinates list)	6
Calculation Grid (Coordinates List)	7
3D Rendering	8
False Colour Rendering	9
Exterior Surfaces	
Calculation Grid 62X35	
Value Chart (E, Perpendicular)	10



Bocce Courts Lighting Project ZM-2020-1161 / Luminaire parts list

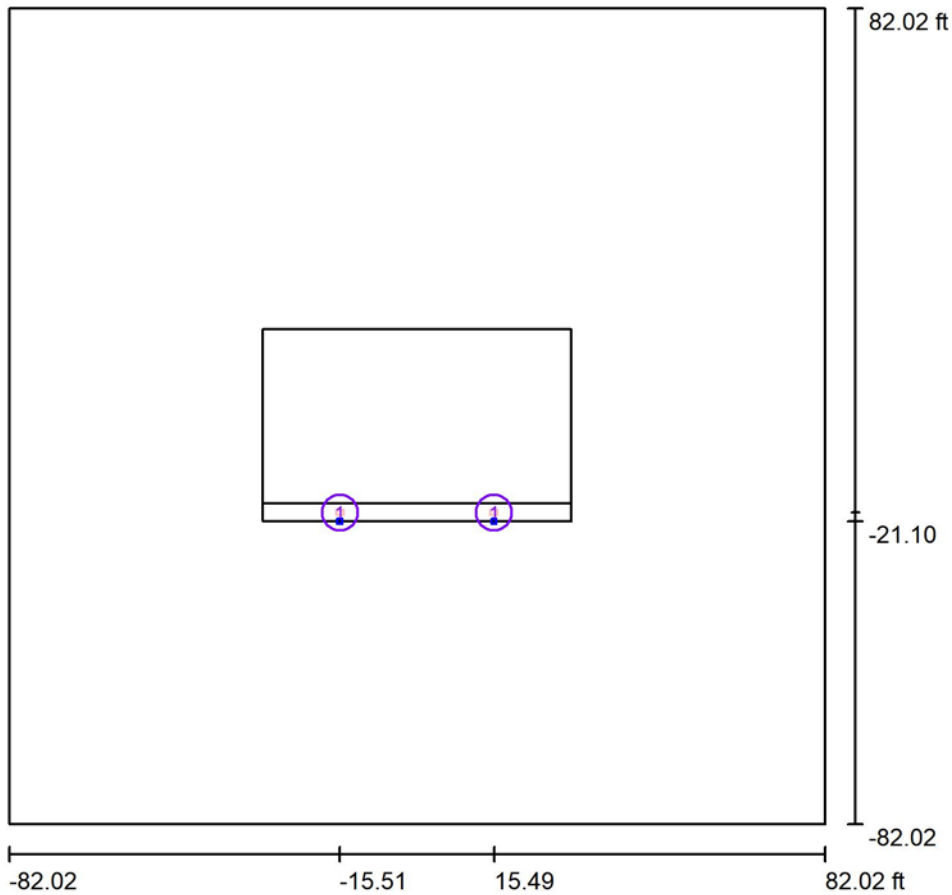
2 Pieces FLB280-T4M1-V5 30K-Area Light
Article No.:
Luminous flux (Luminaire): 33311 lm
Luminous flux (Lamps): 33600 lm
Luminaire Wattage: 271.0 W
Luminaire classification according to CIE: 100
CIE flux code: 23 60 96 100 99
Fitting: 1 x User defined (Correction Factor 1.000).

See our luminaire catalog for an image of the luminaire.





Exterior Scene 1 / Planning data



Maintenance factor: 0.90, ULR (Upward Light Ratio): 0.0%

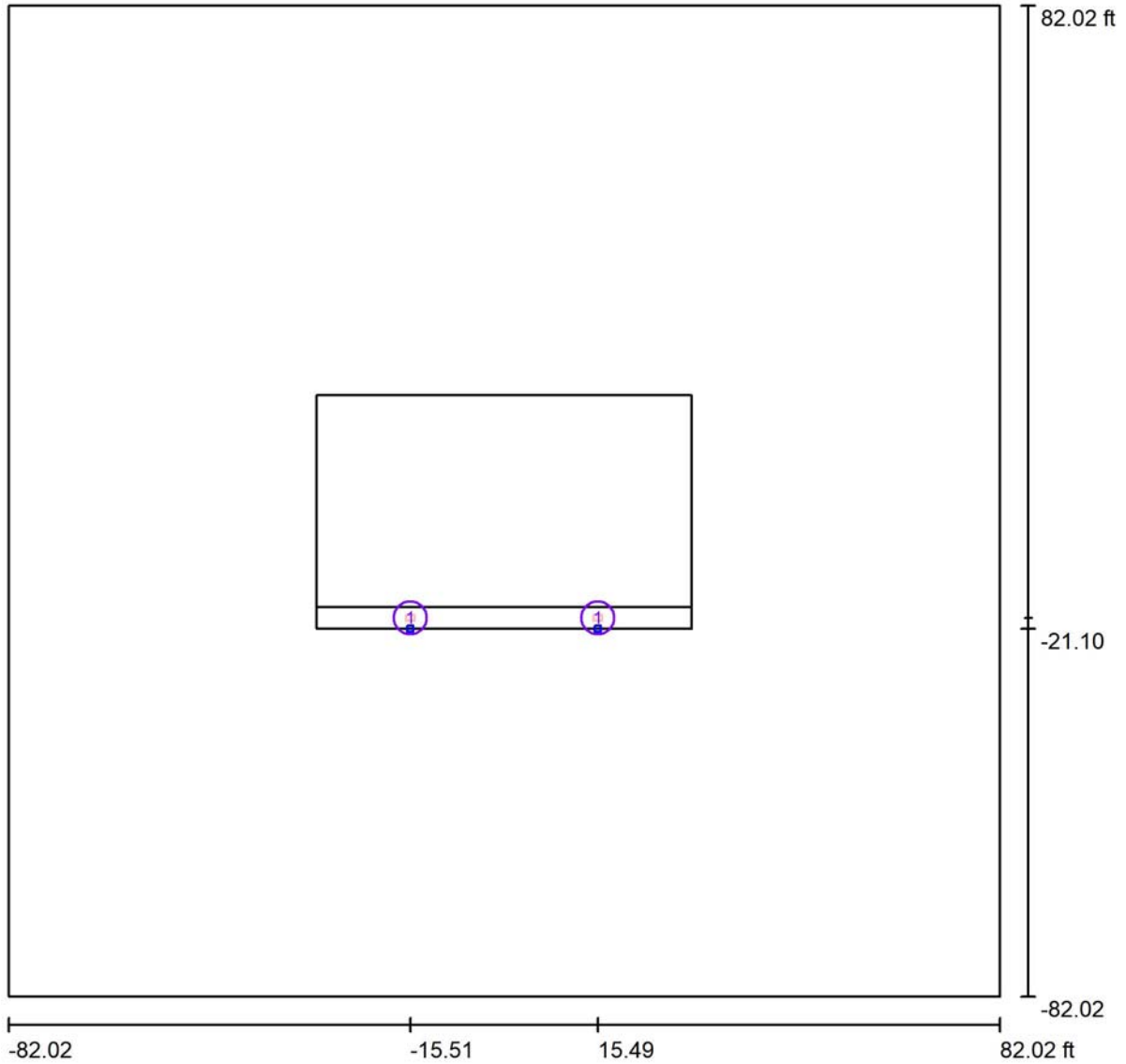
Scale 1:464

Luminaire Parts List

No.	Pieces	Designation (Correction Factor)	Φ (Luminaire) [lm]	Φ (Lamps) [lm]	P [W]
1	2	FLB280-T4M1-V5 30K-Area Light (1.000)	33311	33600	271.0
*Modified Technical Specifications			Total: 66622	Total: 67200	542.0



Exterior Scene 1 / Luminaires (layout plan)



Scale 1 : 358

Luminaire Parts List

No.	Pieces	Designation
1	2	FLB280-T4M1-V5 30K-Area Light

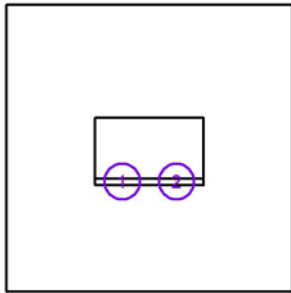
*Modified Technical Specifications



Exterior Scene 1 / Luminaires (coordinates list)

FLB280-T4M1-V5 30K-Area Light

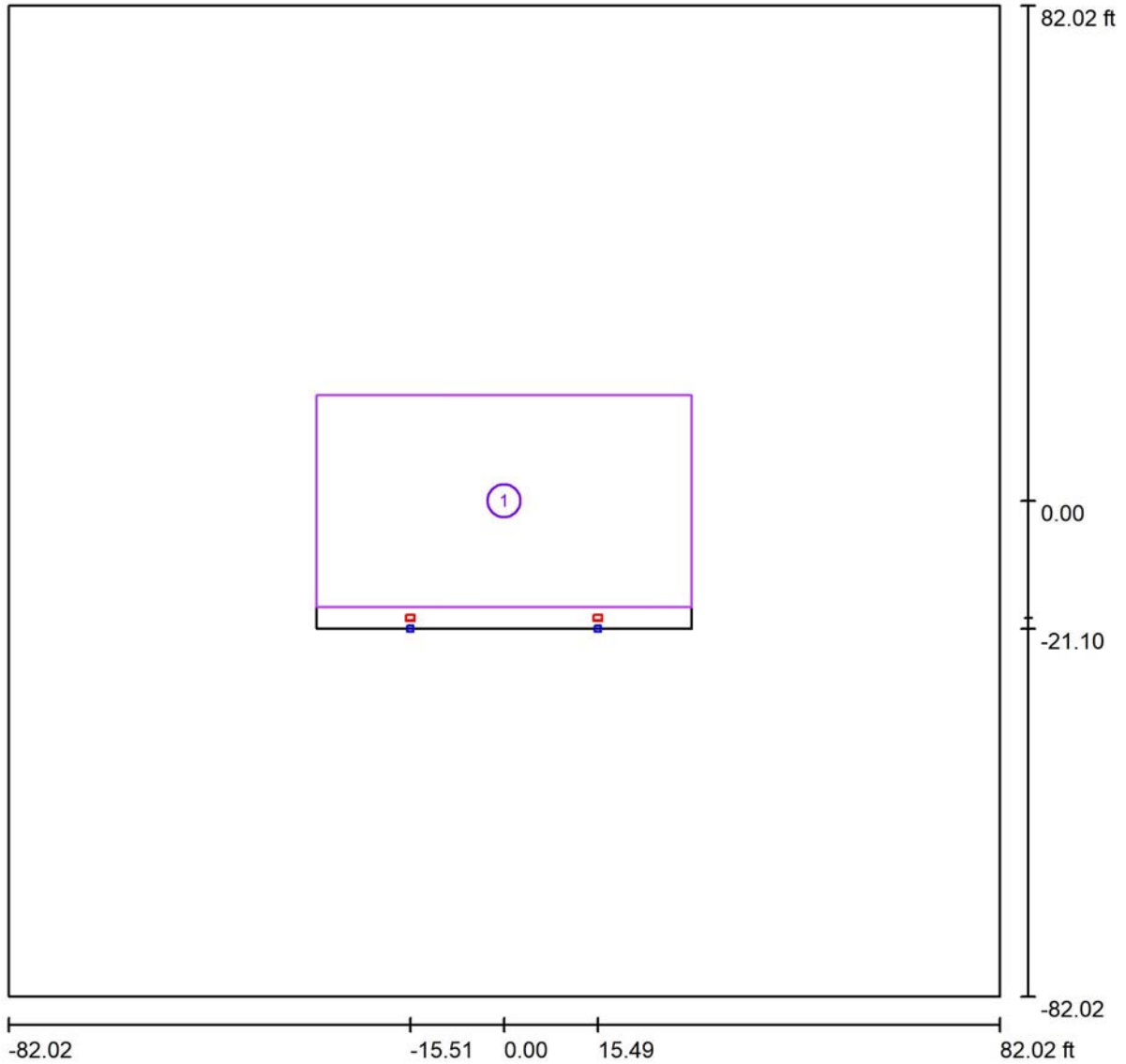
33311 lm, 271.0 W, 1 x 1 x User defined (Correction Factor 1.000).



No.	Position [ft]			Rotation [°]		
	X	Y	Z	X	Y	Z
1	-15.500	-19.300	20.000	7.0	0.0	0.0
2	15.500	-19.300	20.000	7.0	0.0	0.0



Exterior Scene 1 / Calculation Grid (Coordinates List)



Scale 1 : 358

List of the Calculation Grids

No.	Designation	Position [ft]			Size [ft]		Rotation [°]		
		X	Y	Z	L	W	X	Y	Z
1	Calculation Grid 62X35	0.000	0.000	0.000	62.000	35.000	0.0	0.0	0.0

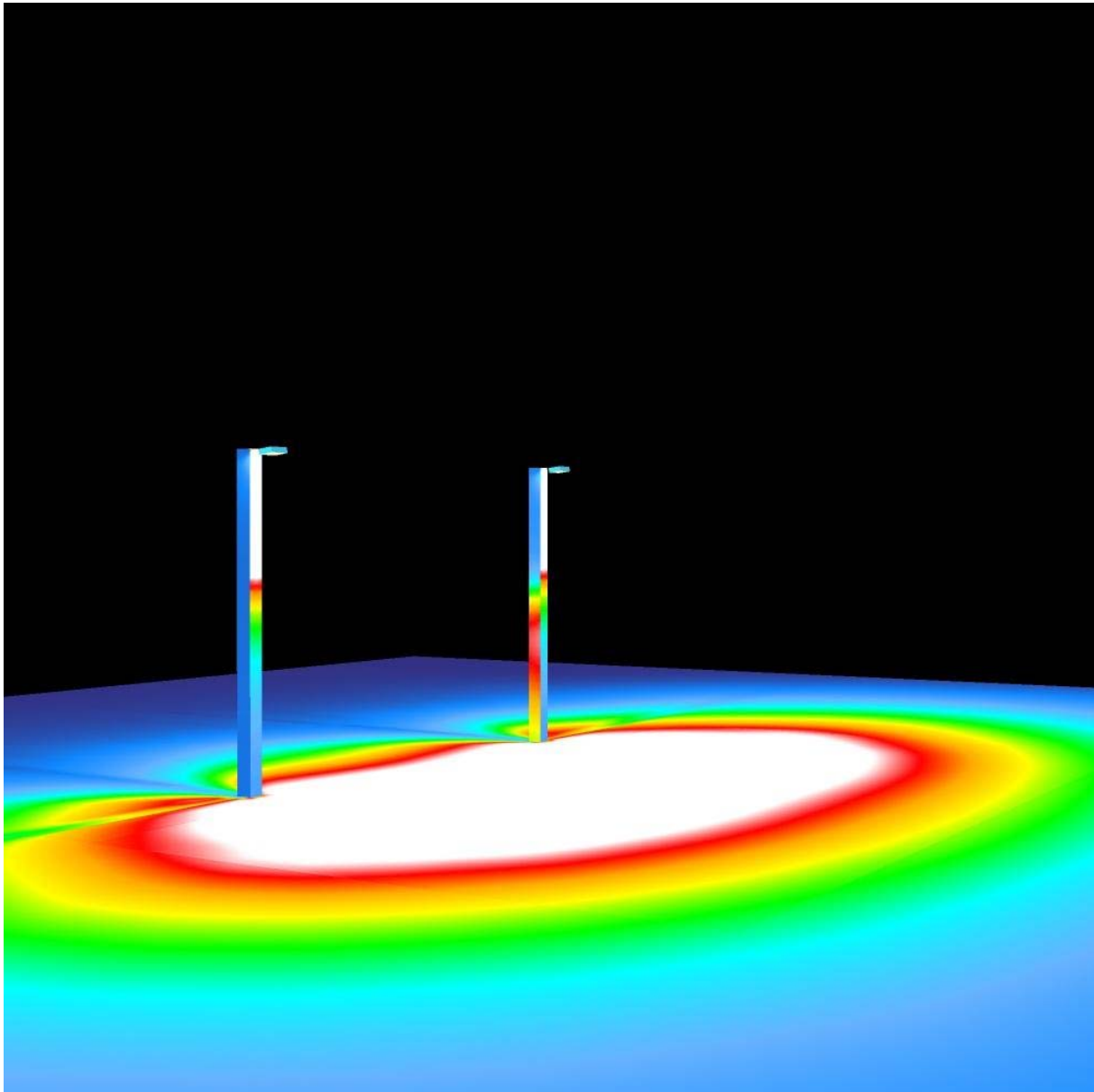


Exterior Scene 1 / 3D Rendering





Exterior Scene 1 / False Colour Rendering



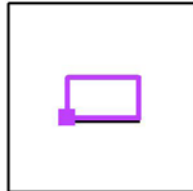
0 1.25 2.50 3.75 5.00 6.25 7.50 8.75 10.00 fc

Exterior Scene 1 / Calculation Grid 62X35 / Value Chart (E, Perpendicular)



Values in Footcandles, Scale 1 : 136

Position of surface in external scene:
Marked point: (-31.000 ft, -17.500 ft, 0.000 ft)



Grid: 13 x 7 Points

E_{av} [fc]	E_{min} [fc]	E_{max} [fc]	u0	E_{min} / E_{max}
10	5.04	15	0.49	0.34