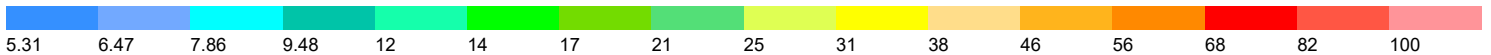
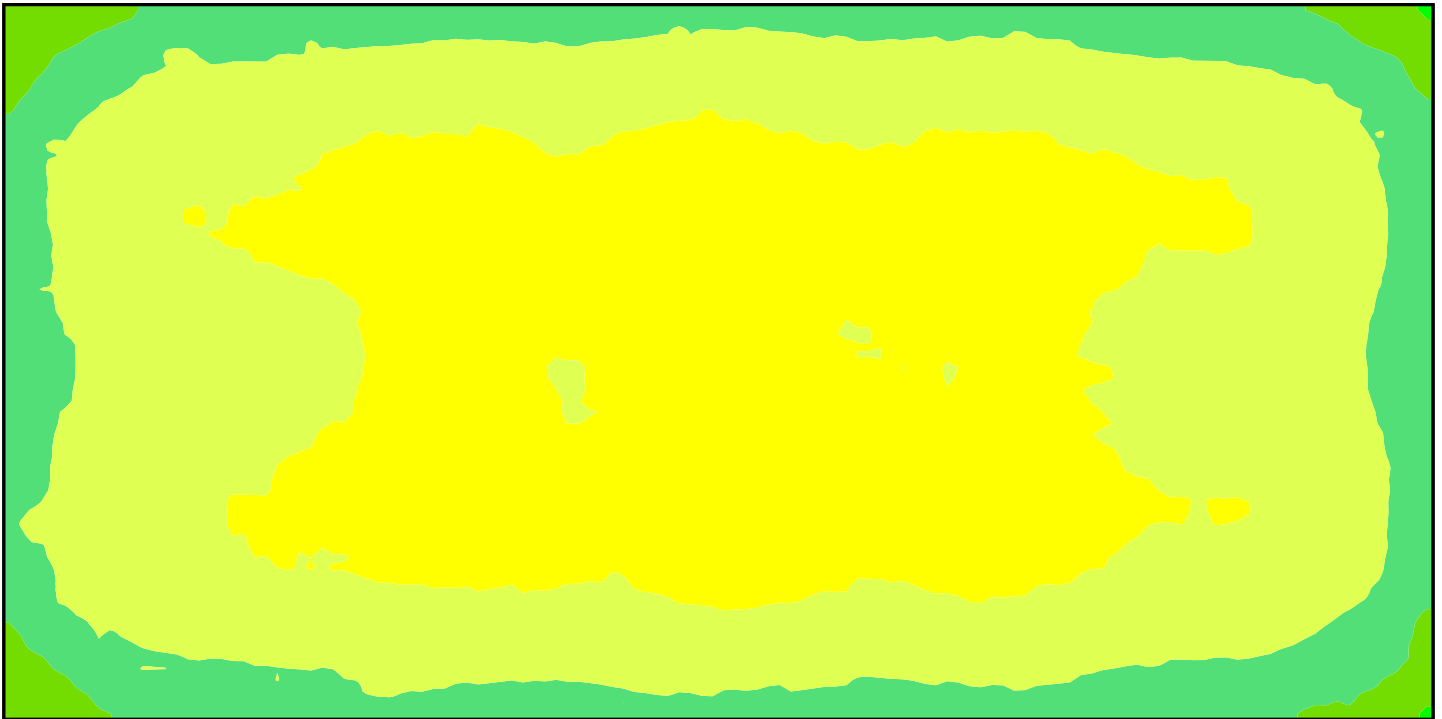


50' x 100' Indoor Riding Arena 20' MH - 10 SYMO 150s 28.7fc - 2.01 Max/Min



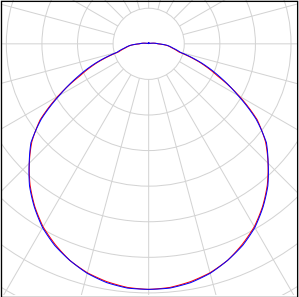
This photometric report will be generated using methods recommended by the Illuminating Engineering Society of North America (IESNA). The calculations in this report will be based on data provided by a third party. The accuracy of this photometric report is dependent on the accuracy of the data provided. Enduser environment and application (including, but not limited to voltage variation and dirt accumulation) can cause actual photometric performance to differ from the performance calculated using the data provided. This report will be provided without warranty as to accuracy, completeness, reliability, or otherwise. In no event will Access Fixtures be responsible for any loss resulting from any use of this report.

Content

50' x 100' Indoor Riding Arena

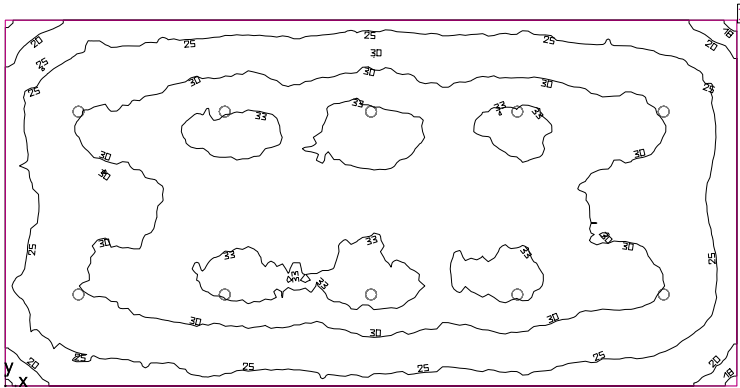
Luminaire list.....	3
Site 1	
Building 1	
Storey 1	
Manufacturing Facility	
Summary.....	4
Luminaire layout plan.....	5
Workplane (Indoor Riding Arena) / Perpendicular illuminance (adaptive).....	6

50' x 100' Manufacturing Facility

Quantity	Luminaire (Luminous emittance)		
10	Access Fixtures - SYMO 150 AF55XLED-8500 L240 150W 5000K High-bay Luminaire with Refractor Lens Luminous emittance 1 Fitting: 1xLED Light output ratio: 99.89% Lamp luminous flux: 19113 lm Luminaire luminous flux: 19091 lm Power: 150.9 W Luminous efficacy: 126.5 lm/W Colorimetric data 1x: CCT 3000 K, CRI 100	See our luminaire catalog for an image of the luminaire.	

Total lamp luminous flux: 191130 lm, Total luminaire luminous flux: 190910 lm, Total Load: 1509.0 W, Luminous efficacy: 126.5 lm/W

Indoor Riding Arena



Clearance height: 20.000 ft, Reflection factors: Ceiling 75.0%, Walls 75.0%, Floor 20.0%, Light loss factor: 0.80

Workplane

Surface	Result	Average	Min	Max	Mean/Min	Max/Min
1 Workplane (Indoor Riding Arena)	Perpendicular illuminance (adaptive) [fc] Height: 0.000 ft, Wall zone: 0.000 ft	28.7	16.9	33.9	1.70	2.01

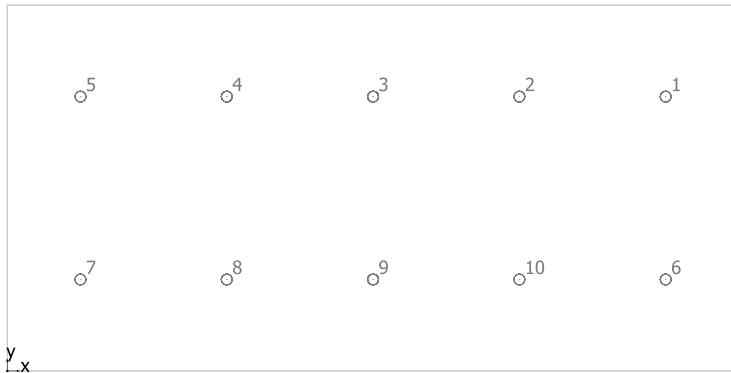
#	Luminaire	Φ (Luminaire) [lm]	Power [W]	Luminous efficacy [lm/W]
10	Access Fixtures - SYMO 150 AF55XLED-8500 L240 150W 5000K High-bay Luminaire with Refractor Lens	19091	150.9	126.5
Total via all luminaires		190910	1509.0	126.5

Lighting power density: 0.30 W/sq ft = 0.10 W/sq ft/10 fc (Floor area of room 5000.12 sq ft)

Consumption: 4150 kWh/a of maximum 16300 kWh/a

The energy consumption quantities do not take into account light scenes and their dimming levels.

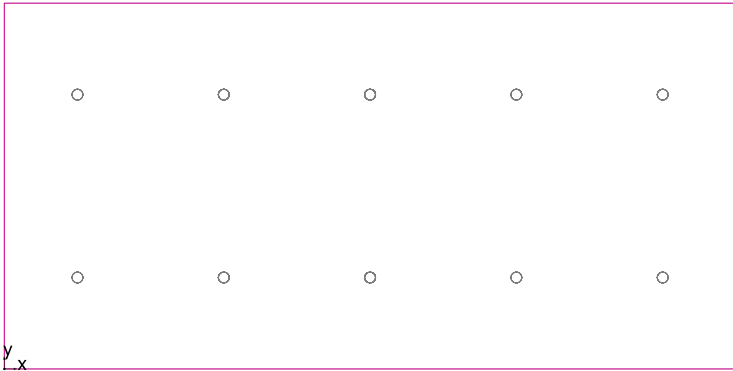
Manufacturing Facility



Access Fixtures SYMO 150 AF55XLED-8500 L240 150W 5000K High-bay Luminaire with Refractor Lens

No.	X [ft]	Y [ft]	Mounting height [ft]	Housing rotation [°]	Light loss factor
1	90.000	37.500	20.000	180.0	0.80
2	70.000	37.500	20.000	180.0	0.80
3	50.000	37.500	20.000	180.0	0.80
4	30.000	37.500	20.000	180.0	0.80
5	10.000	37.500	20.000	180.0	0.80
6	90.000	12.500	20.000	180.0	0.80
7	10.000	12.500	20.000	180.0	0.80
8	30.000	12.500	20.000	180.0	0.80
9	50.000	12.500	20.000	180.0	0.80
10	70.000	12.500	20.000	180.0	0.80

Workplane (Indoor Riding Arena) / Perpendicular illuminance (adaptive)



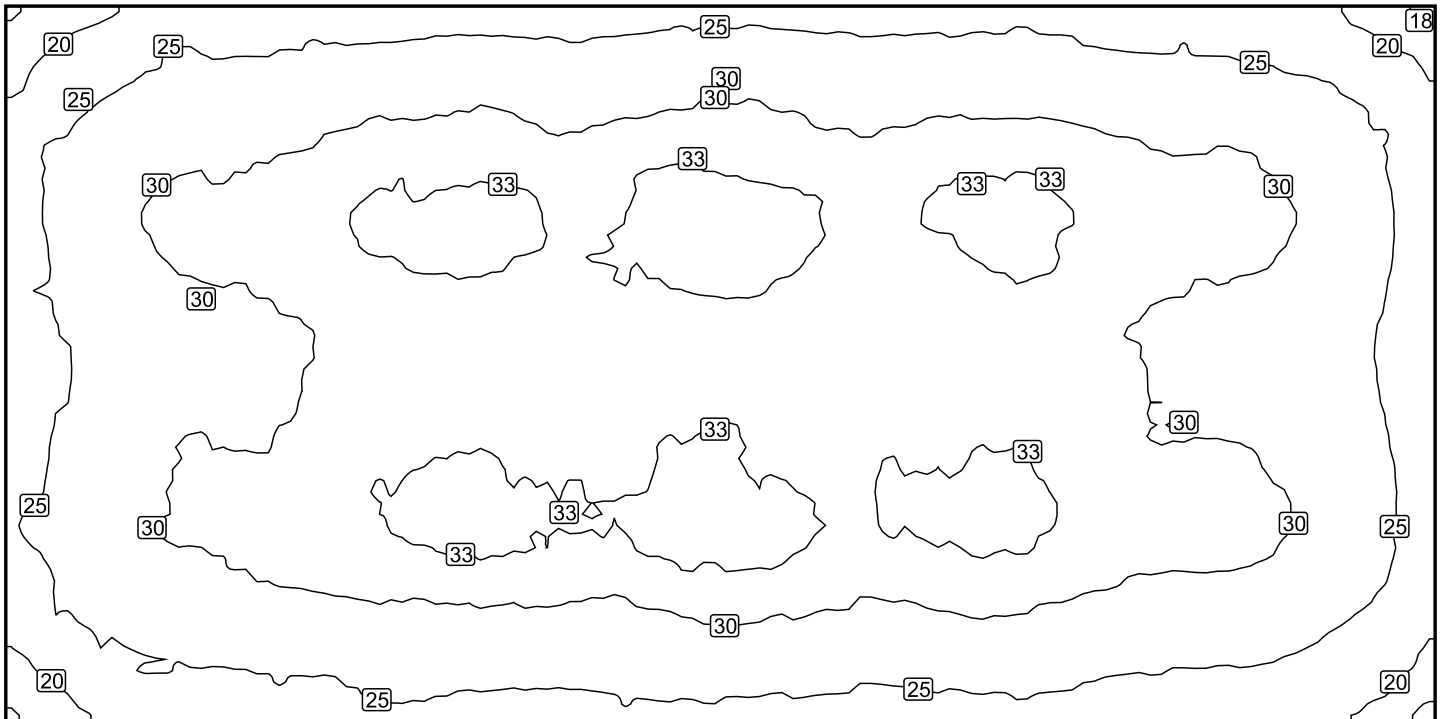
Workplane (Manufacturing Facility): Perpendicular illuminance (adaptive) (Surface)

Light scene: Light scene 1

Average: 28.7 fc, Min: 16.9 fc, Max: 33.9 fc, Mean/Min: 1.70, Max/Min: 2.01

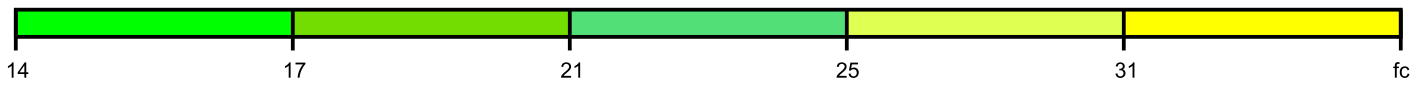
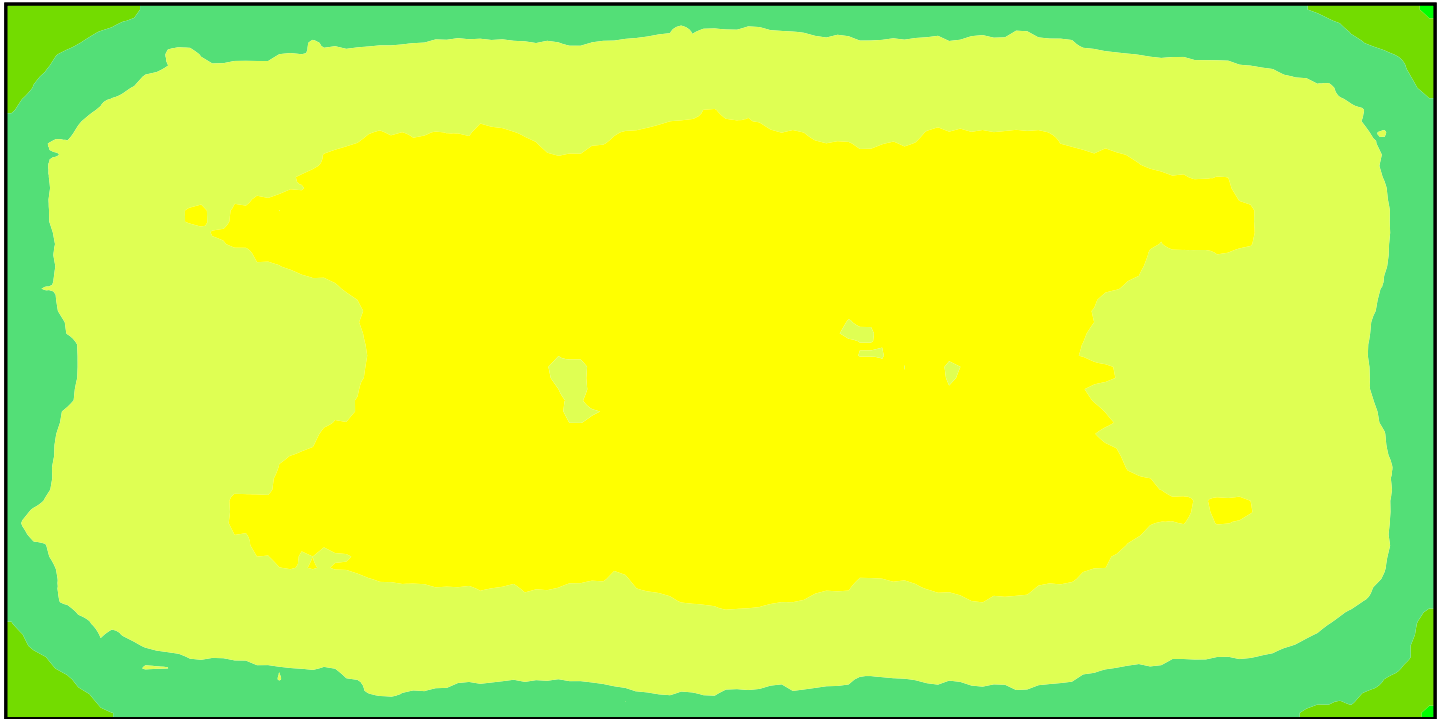
Height: 0.000 ft, Wall zone: 0.000 ft

Isolines [fc]



Scale: 1 : 161

False colors [fc]



Scale: 1 : 161

Value grid [fc]

(19)	+21	+24	+24	+24	+25	+25	+25	+25	+25	+26	+26	+25	+25	+25	+26	+25	+24	+24	+23	+22	(19)
+22	+25	+27	+27	+28	+29	+29	+30	+28	+29	+30	+30	+29	+28	+29	+29	+29	+28	+28	+27	+26	+22
+25	+28	+30	+30	+31	+32	+32	+32	+31	+32	+33	+32	+32	+31	+32	+32	+32	+31	+30	+30	+28	+24
+25	+28	+30	+31	+31	+33	+33	+33	+32	+33	(34)	(34)	+33	+32	+32	+33	+32	+31	+31	+30	+28	+24
+24	+28	+29	+30	+30	+31	+32	+32	+32	+32	+32	+32	+31	+31	+32	+32	+31	+30	+30	+29	+27	+24
+23	+26	+28	+29	+30	+31	+32	+31	+31	+31	+31	+32	+31	+31	+31	+31	+31	+30	+29	+29	+27	+24
+24	+27	+29	+30	+30	+31	+32	+32	+31	+31	+32	+32	+32	+32	+32	+32	+31	+30	+30	+29	+28	+24
+25	+28	+30	+31	+31	+32	+33	+33	+32	+32	+33	+33	+32	+33	+33	+33	+32	+31	+31	+30	+28	+25
+25	+28	+30	+30	+31	+31	+32	+32	+32	+32	+33	+33	+32	+32	+32	+32	+32	+30	+30	+30	+28	+24
+23	+26	+27	+28	+28	+29	+29	+29	+29	+29	+30	+30	+29	+29	+29	+30	+28	+28	+27	+27	+25	+22
(19)	+22	+23	+24	+24	+25	+26	+25	+25	+25	+26	+26	+25	+25	+25	+26	+25	+24	+24	+24	+22	(19)

Scale: 1 : 161