



Operator Jonathan  
Telephone  
Fax  
e-Mail

## Table of contents

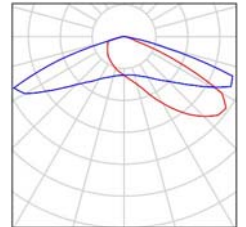
<b>AFL- 60' Round Outdoor Riding Arena ZM-2021-1183</b>	
Project Cover	1
Table of contents	2
Luminaire parts list	3
<b>AF72XLE450-T4M1-V5 4000K-Area Light</b>	
Luminaire Data Sheet	4
<b>Exterior Scene 1</b>	
Planning data	5
Luminaires (layout plan)	6
Luminaires (coordinates list)	7
Calculation Grid (Coordinates List)	8
3D Rendering	9
False Colour Rendering	10
<b>Exterior Surfaces</b>	
<b>Calculation Grid 1</b>	
Value Chart (E, Perpendicular)	11

Operator Jonathan  
Telephone  
Fax  
e-Mail

## AFL- 60' Round Outdoor Riding Arena ZM-2021-1183 / Luminaire parts list

4 Pieces AF72XLE450-T4M1-V5-4000K-Area Light  
Article No.:  
Luminous flux (Luminaire): 58416 lm  
Luminous flux (Lamps): 58511 lm  
Luminaire Wattage: 460.6 W  
Luminaire classification according to CIE: 100  
CIE flux code: 25 63 96 100 100  
Fitting: 1 x V5 4000K (Correction Factor 1.000).

See our luminaire  
catalog for an image of  
the luminaire.

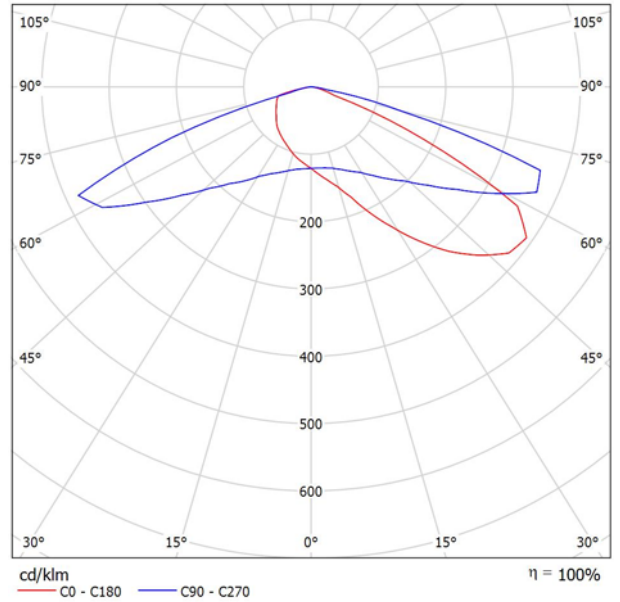


Operator Jonathan  
 Telephone  
 Fax  
 e-Mail

**AF72XLE450-T4M1-V5 4000K-Area Light / Luminaire Data Sheet**

Luminous emittance 1:

See our luminaire catalog for an image of the luminaire.

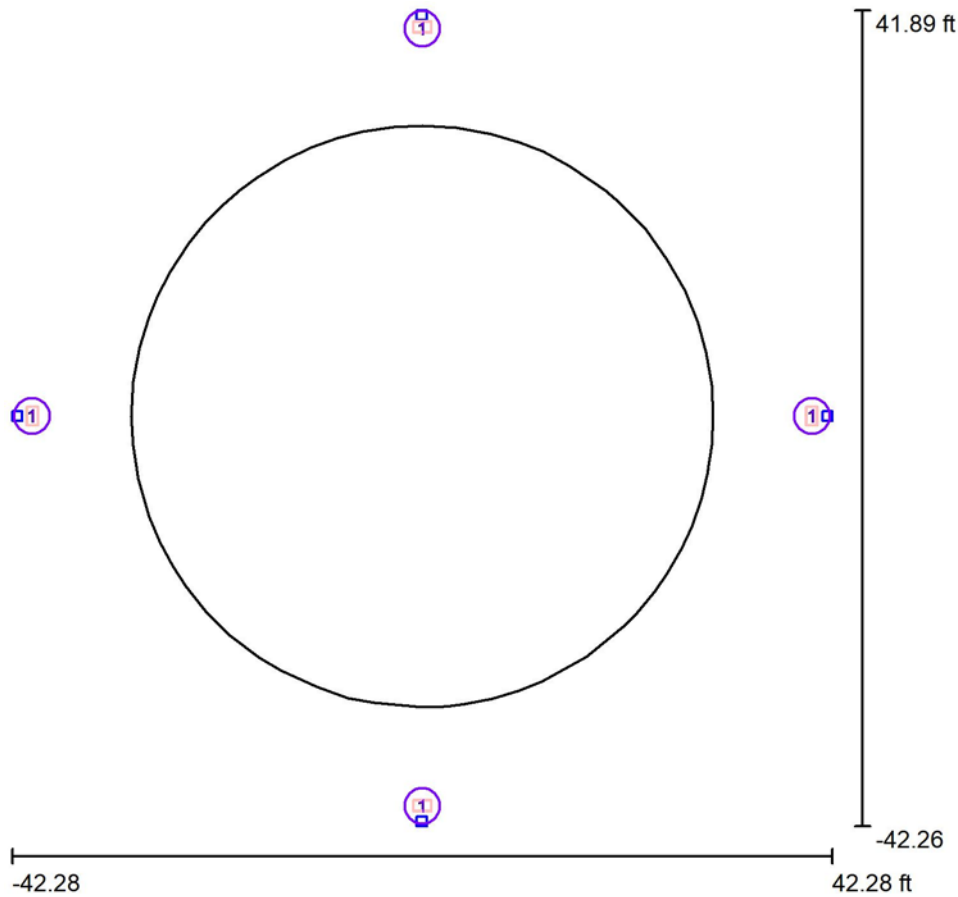


Luminaire classification according to CIE: 100  
 CIE flux code: 25 63 96 100 100

Due to missing symmetry properties, no UGR table can be displayed for this luminaire.

Operator Jonathan  
 Telephone  
 Fax  
 e-Mail

**Exterior Scene 1 / Planning data**



Maintenance factor: 0.90, ULR (Upward Light Ratio): 0.0%

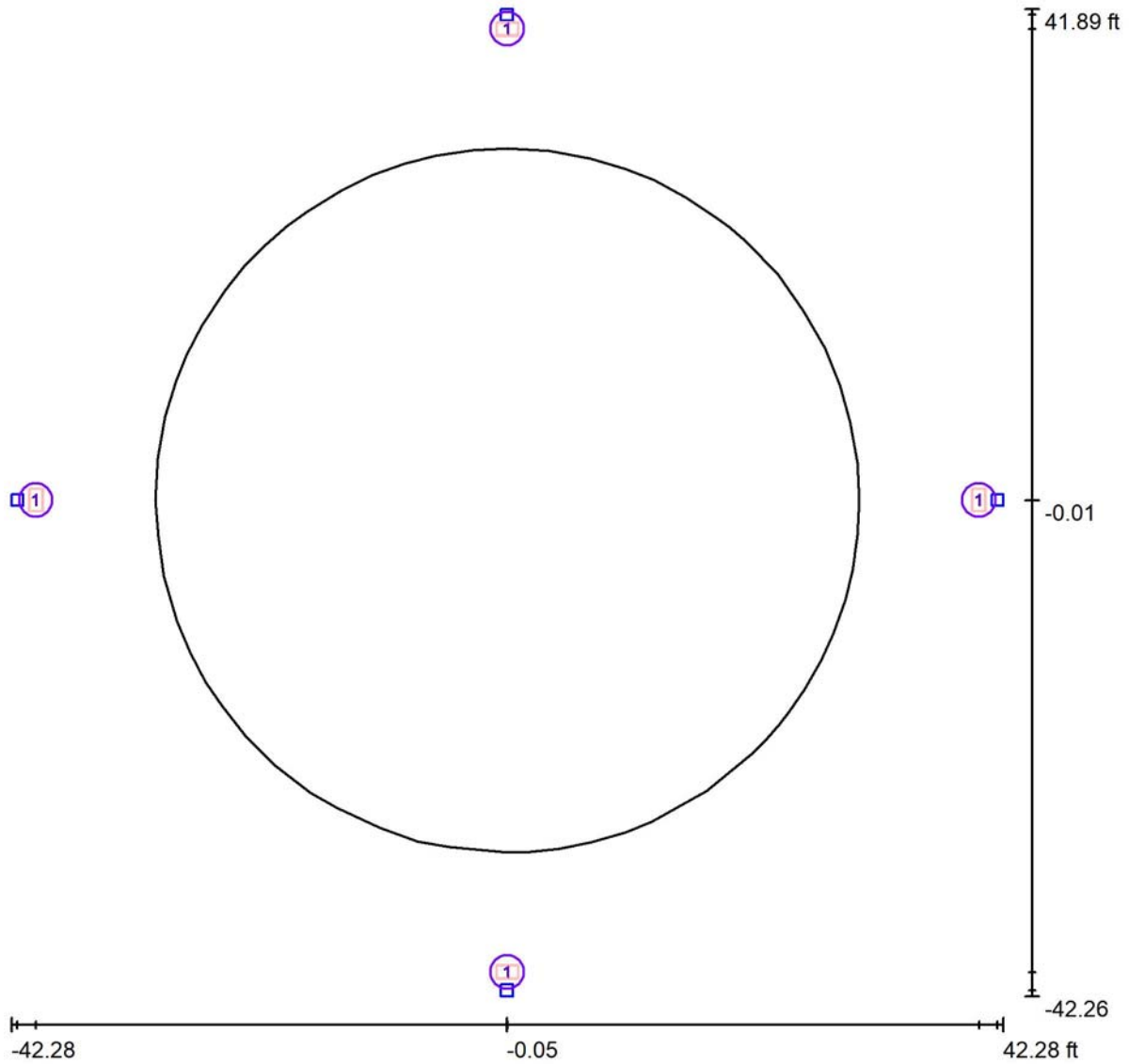
Scale 1:238

**Luminaire Parts List**

No.	Pieces	Designation (Correction Factor)	Φ (Luminaire) [lm]	Φ (Lamps) [lm]	P [W]
1	4	AF72XLE450-T4M1-V5 4000K-Area Light (1.000)	58416	58511	460.6
			Total: 233665	Total: 234044	1842.4

Operator Jonathan  
 Telephone  
 Fax  
 e-Mail

**Exterior Scene 1 / Luminaires (layout plan)**



Scale 1 : 185

**Luminaire Parts List**

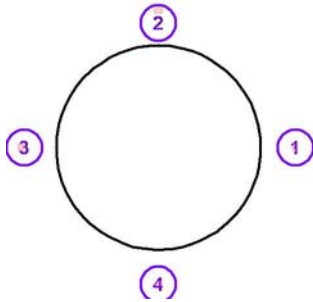
No.	Pieces	Designation
1	4	AF72XLE450-T4M1-V5 4000K-Area Light

Operator Jonathan  
 Telephone  
 Fax  
 e-Mail

**Exterior Scene 1 / Luminaires (coordinates list)**

**AF72XLE450-T4M1-V5 4000K-Area Light**

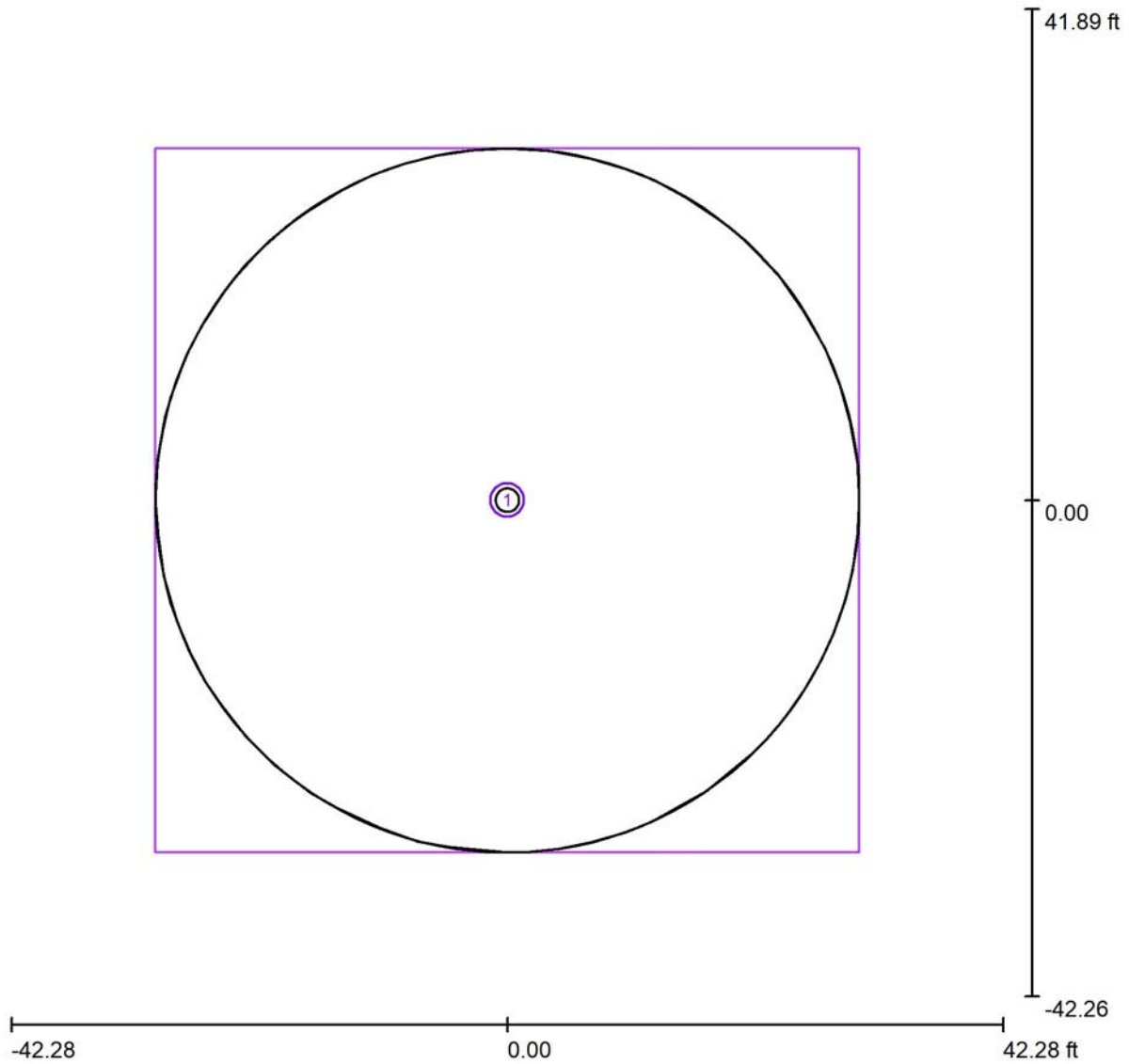
58416 lm, 460.6 W, 1 x 1 x V5 4000K (Correction Factor 1.000).



No.	Position [ft]			Rotation [°]		
	X	Y	Z	X	Y	Z
1	40.205	0.000	20.000	0.0	-10.0	180.0
2	0.000	40.205	20.000	0.0	-10.0	-90.0
3	-40.205	0.000	20.000	0.0	-10.0	0.0
4	0.000	-40.205	20.000	0.0	-10.0	90.0

Operator Jonathan  
 Telephone  
 Fax  
 e-Mail

**Exterior Scene 1 / Calculation Grid (Coordinates List)**



Scale 1 : 185

**List of the Calculation Grids**

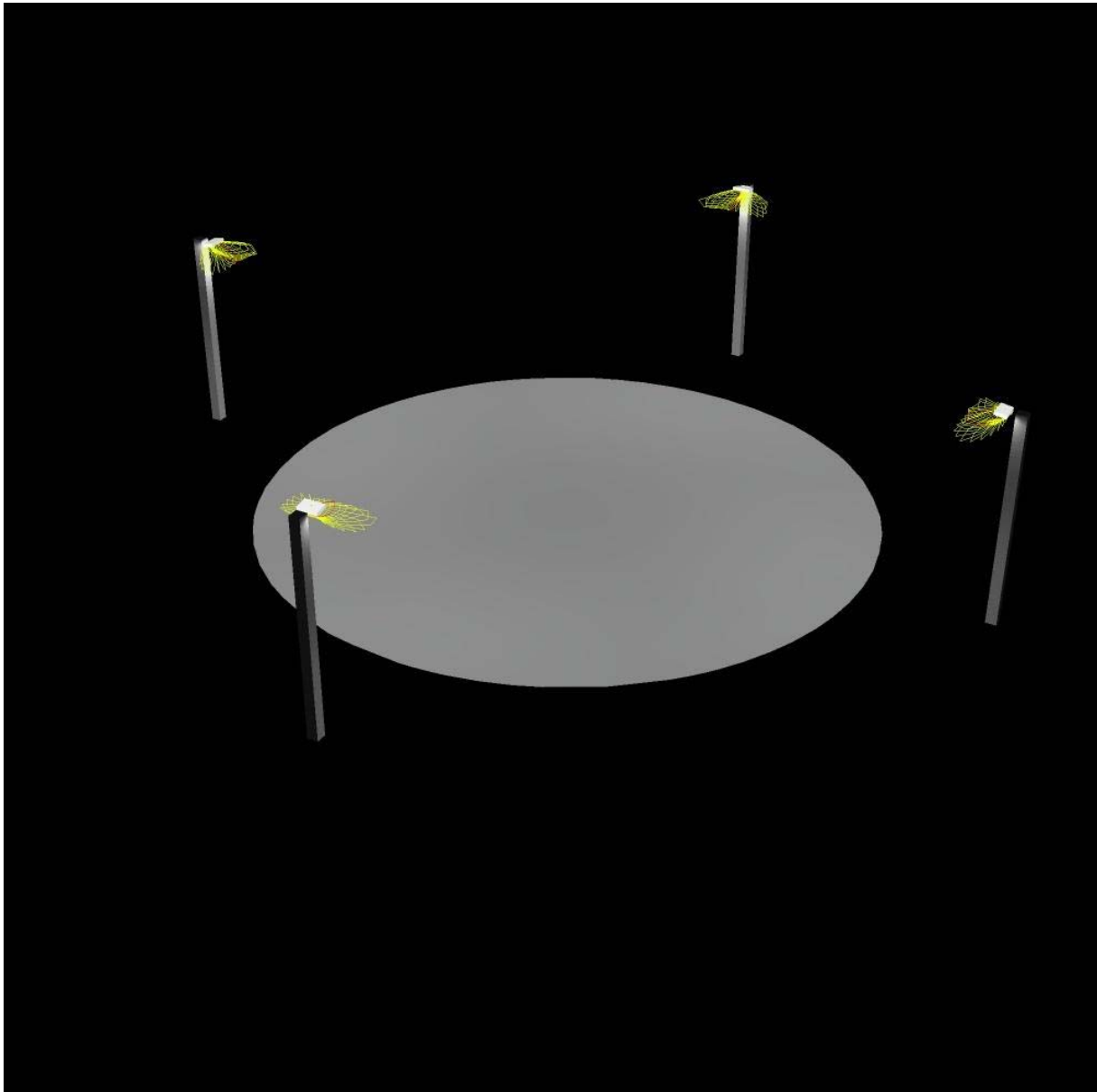
No.	Designation	Position [ft]			Size [ft]		Rotation [°]		
		X	Y	Z	L	W	X	Y	Z
1	Calculation Grid 1	0.000	0.000	0.000	60.000	60.000	0.0	0.0	0.0





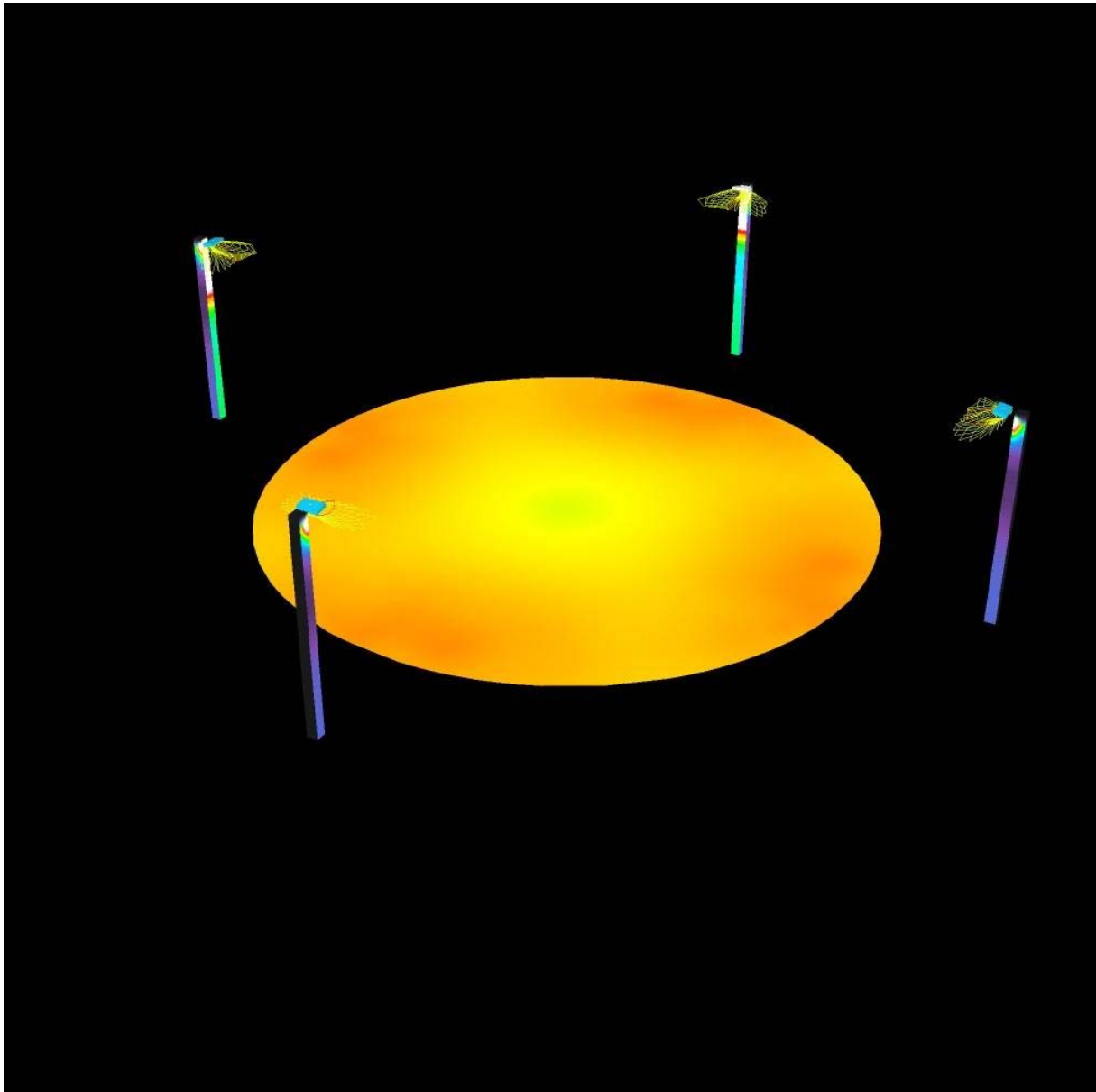
Operator Jonathan  
Telephone  
Fax  
e-Mail

**Exterior Scene 1 / 3D Rendering**



Operator Jonathan  
Telephone  
Fax  
e-Mail

### Exterior Scene 1 / False Colour Rendering

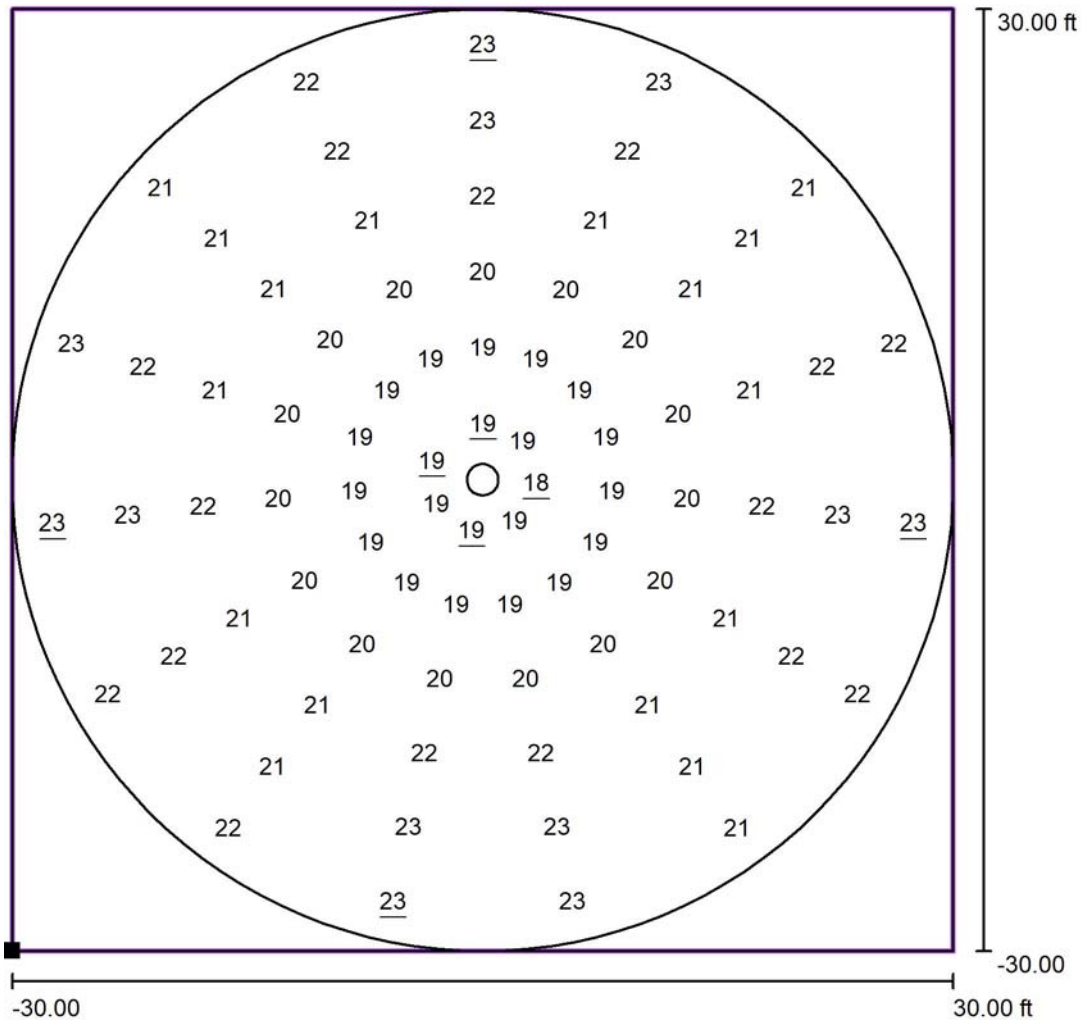


0      3.75      7.50      11.25      15.00      18.75      22.50      26.25      30.00

fc

Operator Jonathan  
 Telephone  
 Fax  
 e-Mail

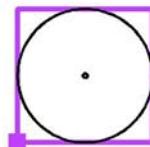
**Exterior Scene 1 / Calculation Grid 1 / Value Chart (E, Perpendicular)**



Values in Footcandles, Scale 1 : 147

Not all calculated values could be displayed.

Position of surface in external scene:  
 Marked point: (-30.000 ft, -30.000 ft,  
 0.000 ft)



Grid: 15 x 6 Points

$E_{av}$ [fc]	$E_{min}$ [fc]	$E_{max}$ [fc]	$u_0$	$E_{min} / E_{max}$
21	18	23	0.90	0.80