

This photometric report will be generated using methods recommended by the Illuminating Engineering Society of North America (IESNA). The calculations in this report will be based on data provided by a third party. The accuracy of this photometric report is dependent on the accuracy of the data provided. End user environment and application including, but not limited to voltage variation and dirt accumulation can cause actual photometric performance to differ from the performance calculated using the data provided. This report will be provided without warranty as to accuracy, completeness, reliability, or otherwise. In no event will Access Fixtures be responsible for any loss resulting from any use of this report.



Operator Jonathan  
Telephone  
Fax  
e-Mail

## Table of contents

### **AFL-Basketball Half Court Lighting ZM-2020-1150**

Project Cover	1
Table of contents	2
Luminaire parts list	3
<b>FLB320-T4M1-V5 50K-Backlight shielding</b>	
Luminaire Data Sheet	4
<b>Exterior Scene 1</b>	
Planning data	5
Luminaires (layout plan)	6
Luminaires (coordinates list)	7
3D Rendering	8
False Color Rendering	9
<b>Exterior Surfaces</b>	
<b>Ground Element 1</b>	
<b>Surface 1</b>	
Isolines (E)	10
Value Chart (E)	11
<b>Calculation Grid -20FT from Court</b>	
Value Chart (E, Perpendicular)	12

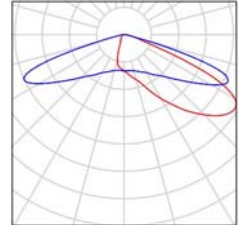


Operator Jonathan  
Telephone  
Fax  
e-Mail

### AFL-Basketball Half Court Lighting ZM-2020-1150 / Luminaire parts list

2 Pieces FLB320-T4M1-V5 50K-Backlight shielding  
Article No.:  
Luminous flux (Luminaire): 33549 lm  
Luminous flux (Lamps): 33846 lm  
Luminaire Wattage: 307.2 W  
Luminaire classification according to CIE: 100  
CIE flux code: 24 61 95 100 99  
Fitting: 1 x V5 5000K (Correction Factor 1.000).

See our luminaire catalog for an image of the luminaire.



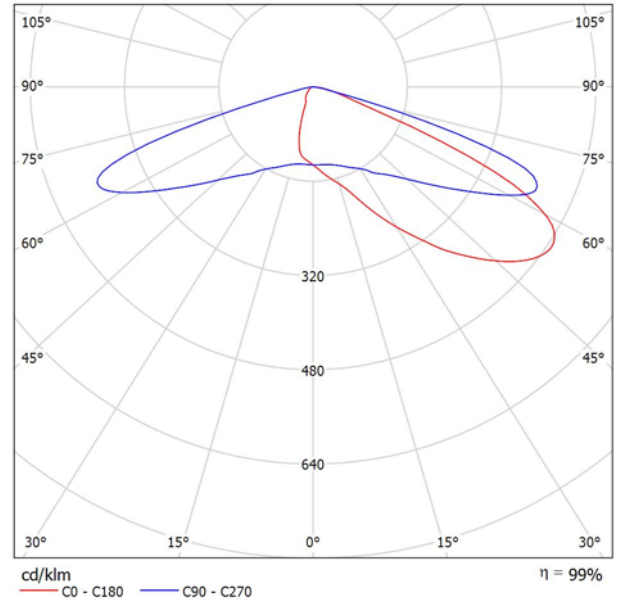


Operator Jonathan  
Telephone  
Fax  
e-Mail

## FLB320-T4M1-V5 50K-Backlight shielding / Luminaire Data Sheet

Luminous emittance 1:

See our luminaire catalog for an image of the luminaire.



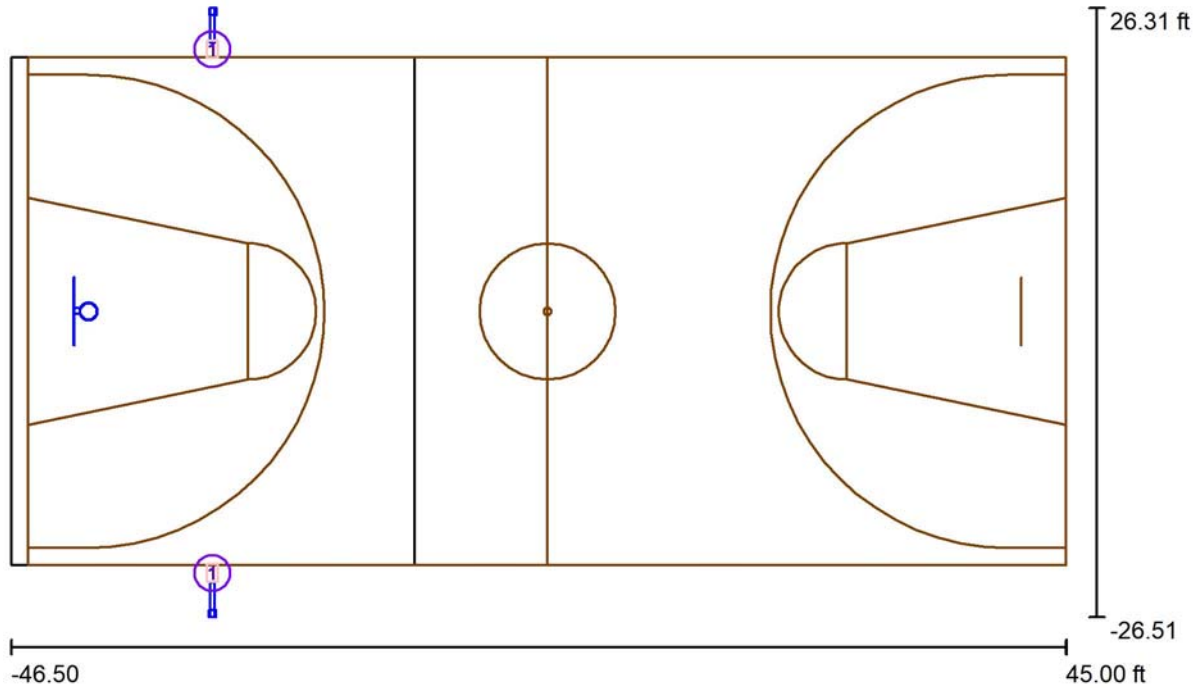
Luminaire classification according to CIE: 100  
CIE flux code: 24 61 95 100 99

Due to missing symmetry properties, no UGR table can be displayed for this luminaire.



Operator Jonathan  
 Telephone  
 Fax  
 e-Mail

**Exterior Scene 1 / Planning data**



Light loss factor: 0.90, ULR (Upward Light Ratio): 0.0%

Scale 1:200

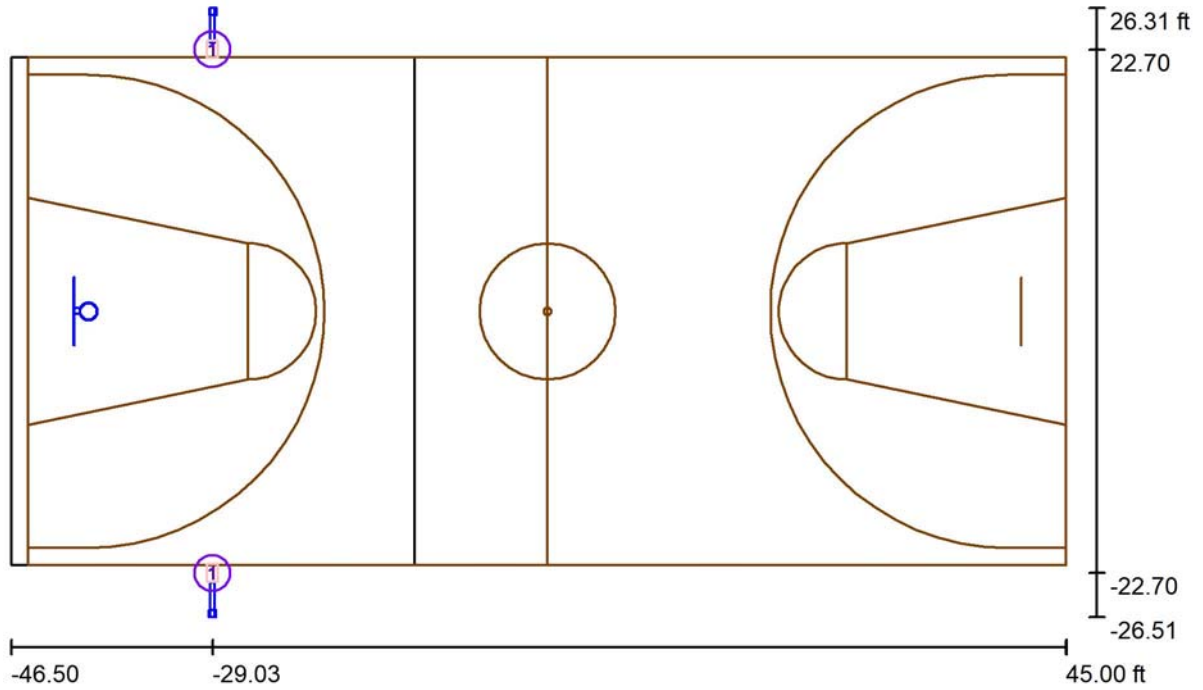
**Luminaire Parts List**

No.	Pieces	Designation (Correction Factor)	Φ (Luminaire) [lm]	Φ (Lamps) [lm]	P [W]
1	2	FLB320-T4M1-V5 50K-Backlight shielding (1.000)	33549	33846	307.2
Total:			67099	67692	614.4



Operator Jonathan  
 Telephone  
 Fax  
 e-Mail

**Exterior Scene 1 / Luminaires (layout plan)**



Scale 1 : 200

**Luminaire Parts List**

No.	Pieces	Designation
1	2	FLB320-T4M1-V5 50K-Backlight shielding



Operator Jonathan  
 Telephone  
 Fax  
 e-Mail

**Exterior Scene 1 / Luminaires (coordinates list)**

**FLB320-T4M1-V5 50K-Backlight shielding**

33549 lm, 307.2 W, 1 x 1 x V5 5000K (Correction Factor 1.000).

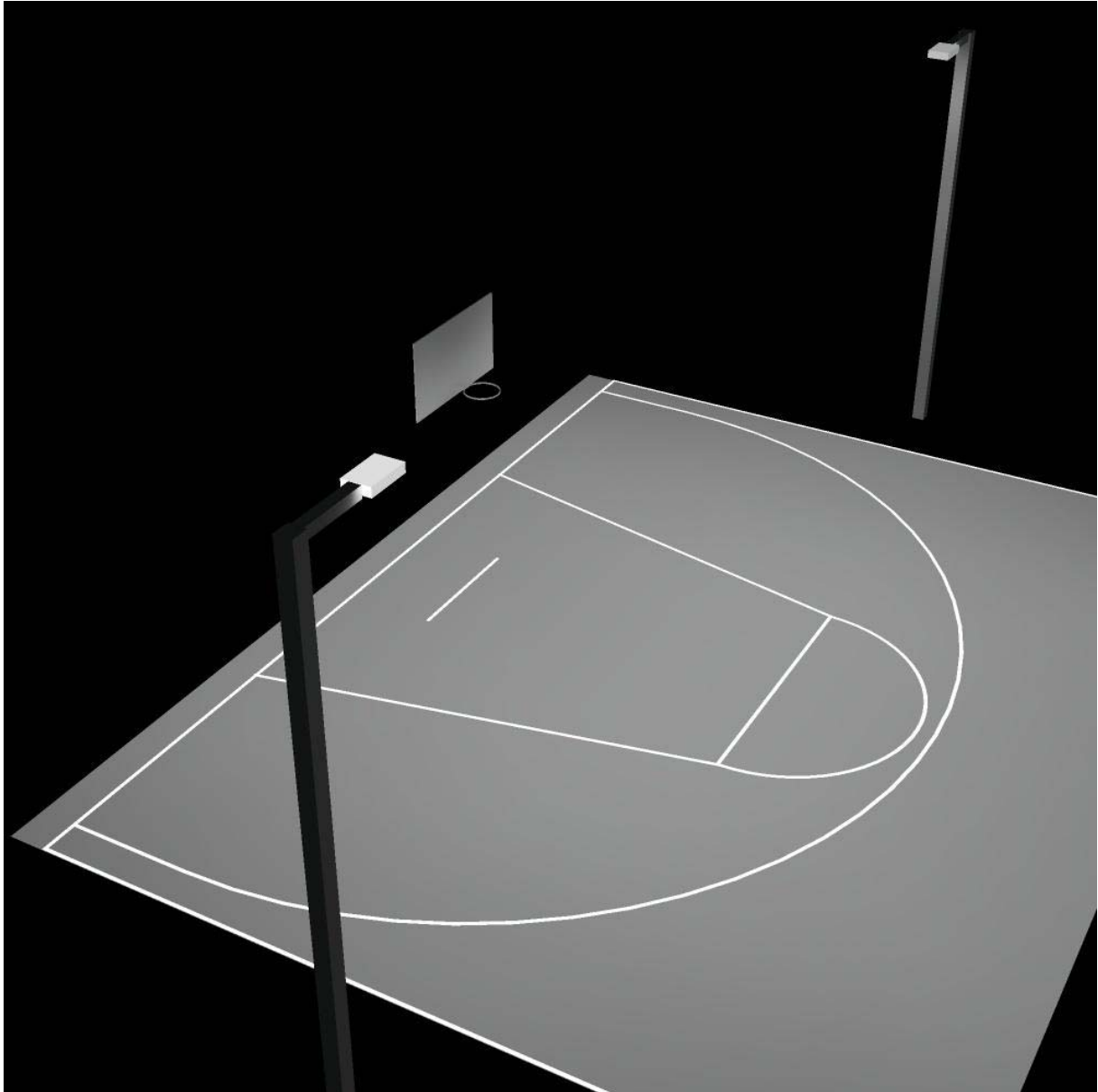


No.	Position [ft]			Rotation [°]		
	X	Y	Z	X	Y	Z
1	-29.025	22.700	20.000	0.0	0.0	-90.0
2	-29.025	-22.700	20.000	0.0	0.0	90.0



Operator Jonathan  
Telephone  
Fax  
e-Mail

**Exterior Scene 1 / 3D Rendering**

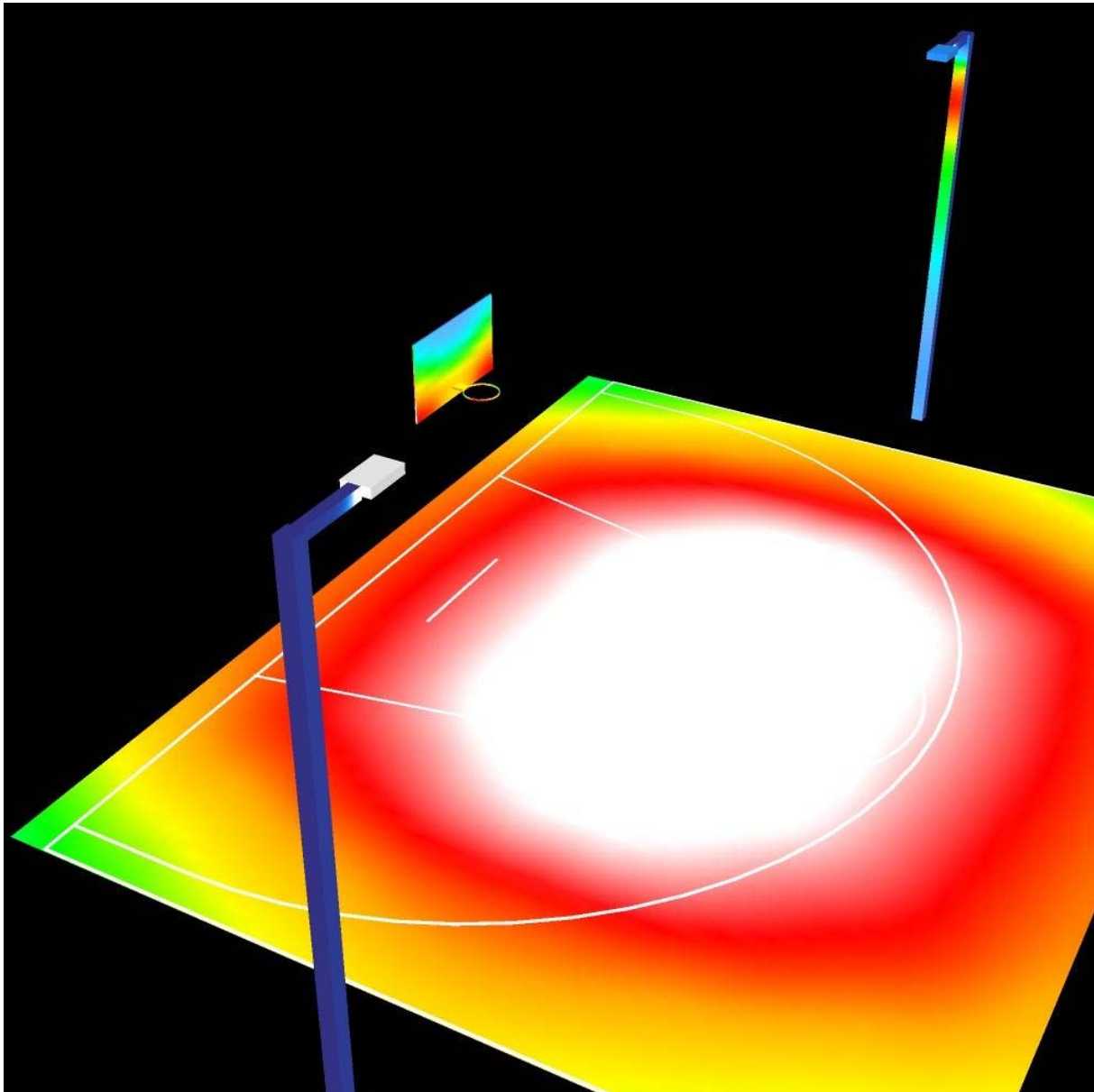






Operator Jonathan  
Telephone  
Fax  
e-Mail

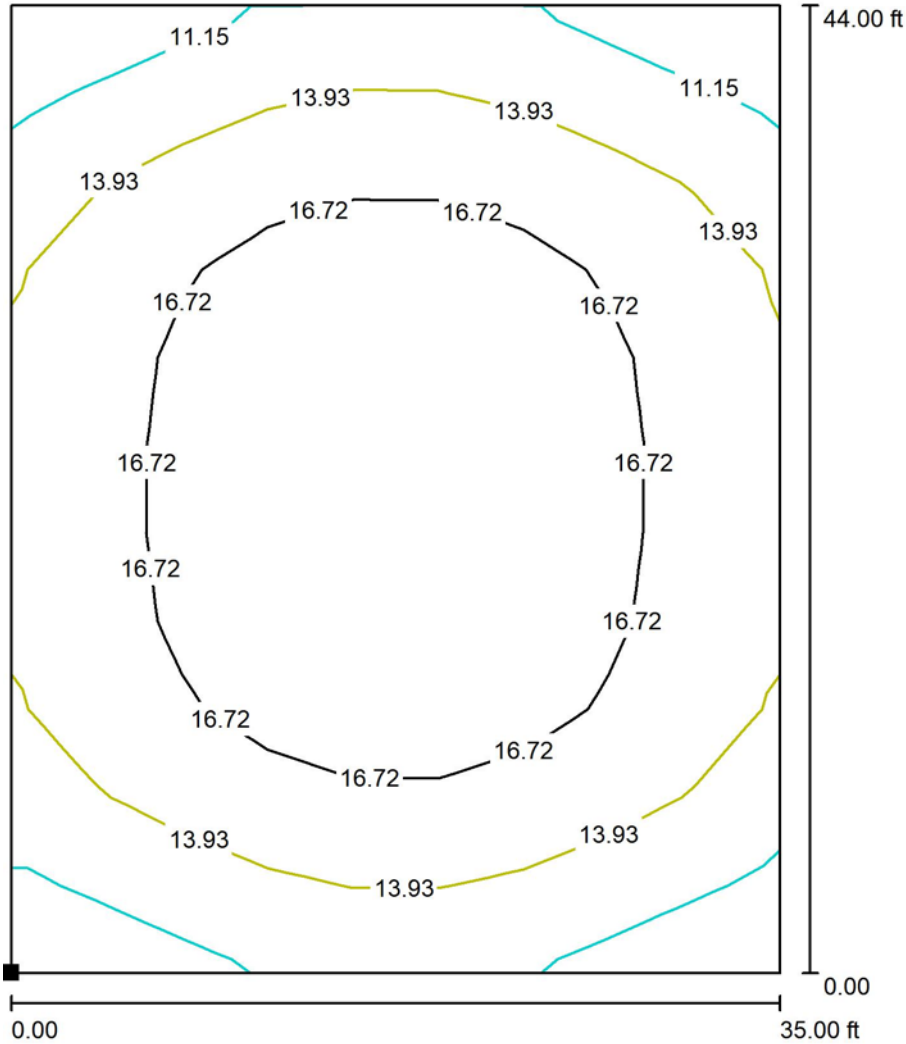
Exterior Scene 1 / False Color Rendering



0 2.25 4.50 6.75 9.00 11.25 13.50 15.75 18.00 fc

Operator Jonathan  
 Telephone  
 Fax  
 e-Mail

**Exterior Scene 1 / Ground Element 1 / Surface 1 / Isolines (E)**



Values in Footcandles, Scale 1 : 105

Position of surface in external scene:

Marked point:

(-46.500 ft, -22.000 ft, 0.000 ft)

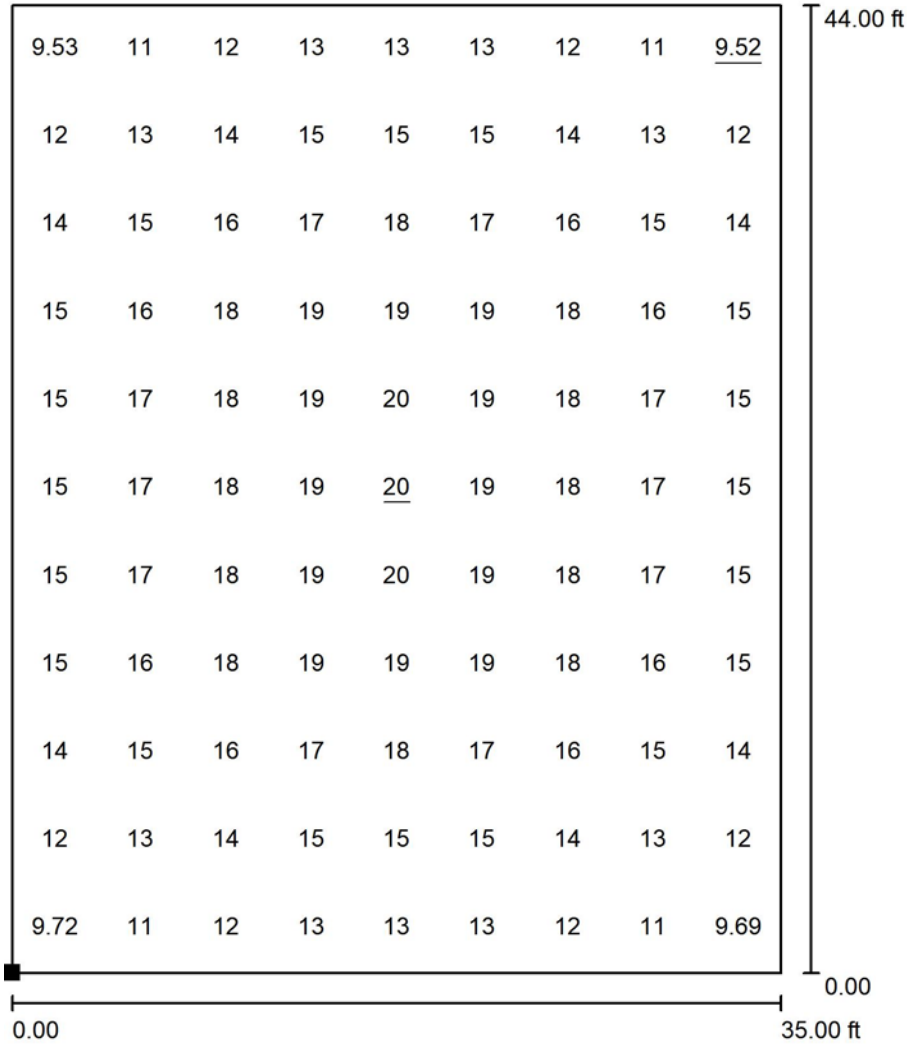


Grid: 9 x 11 Points

$E_{av}$ [fc]	$E_{min}$ [fc]	$E_{max}$ [fc]	u0	$E_{min} / E_{max}$
15	9.52	20	0.620	0.482

Operator Jonathan  
 Telephone  
 Fax  
 e-Mail

**Exterior Scene 1 / Ground Element 1 / Surface 1 / Value Chart (E)**



Values in Footcandles, Scale 1 : 105

Position of surface in external scene:  
 Marked point:  
 (-46.500 ft, -22.000 ft, 0.000 ft)



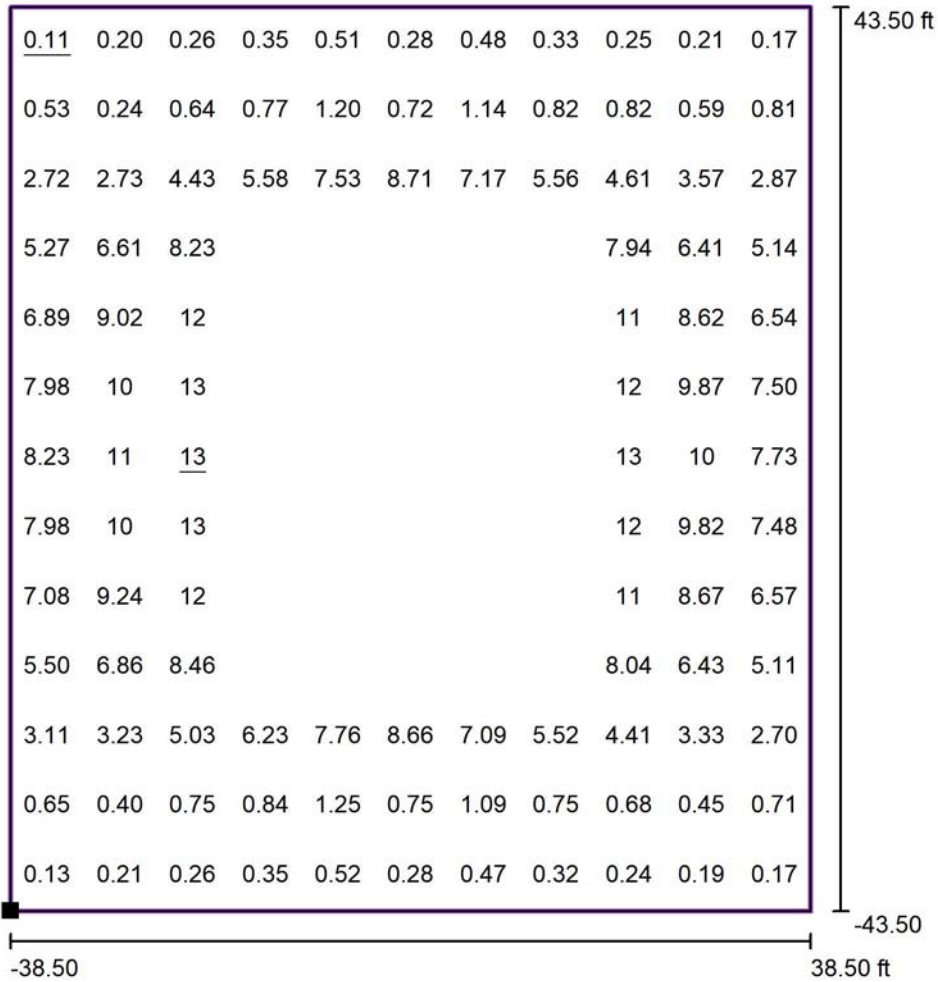
Grid: 9 x 11 Points

$E_{av}$ [fc]	$E_{min}$ [fc]	$E_{max}$ [fc]	u0	$E_{min} / E_{max}$
15	9.52	20	0.620	0.482



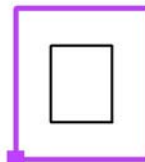
Operator Jonathan  
 Telephone  
 Fax  
 e-Mail

**Exterior Scene 1 / Calculation Grid -20FT from Court / Value Chart (E, Perpendicular)**



Values in Footcandles, Scale 1 : 222

Position of surface in external scene:  
 Marked point: (-66.771 ft, -43.515 ft,  
 0.000 ft)



Grid: 108 Points

$E_{av}$ [fc]	$E_{min}$ [fc]	$E_{max}$ [fc]	u0	$E_{min} / E_{max}$
4.70	0.11	13	0.02	0.01