

TEFA, CONA, & LUVO Square Flat Top Amber Bollard Lights

L70 **147,000 Hours**

Access Fixtures TEFA, CONA, & LUVO turtle friendly bollard lights are designed to replace HID lighting systems up to 70w MH or HPS for wildlife or security applications requiring monochromatic AMBER light. LEDs operate between 585 and 595nm, greater than 560nm required for wildlife protection. These fixtures are ideal for retail centers, industrial parks, schools and universities, public transit and airports, office buildings and medical facilities.

Specifications and Features:

Housing:

Extruded Aluminum Housing with Flush Mounting Base & Vandal-Resistant Screws, Flat Top, Internal Ballast Tray for Easy Maintenance. Bollards Can Be Cut to Custom Lengths Upon Request.

Listing & Ratings:

CSA: Listed for Wet Locations, ANSI/UL 1598, 8750
IP65 Sealed LED Compartment.

Finish:

Textured Architectural Bronze or Black Powdercoat Finish Over a Chromate Conversion Coating. Custom Colors Available Upon Request.

Style:

IES Type III or V Clear Prismatic Borosilicate Glass Refractor, Specially Designed Aluminum Cone Reflector or Internal Louvers

Lens:

Clear Polycarbonate Vandal-Resistant Lens

Mounting Options:

Mounting Kit with 8" Anchor Bolts, Included.

AmberLED:

Aluminum Boards

Wattage:

Array: 14.5w, System: 17w; (70w HID Equivalent)

Driver:

Electronic Driver, 120-277V, 50/60Hz; Less Than 20% THD and PF>0.90. Standard Internal Surge Protection 2kV. 0-10V Dimming Standard for a Dimming Range of 100% to 10%; Dimming Source Current is 150 Microamps.

Warranty:

5-Year Warranty for -40°C to +40°C Environment.

See Page 2 for Projected Lumen Maintenance Table.

Amber LED



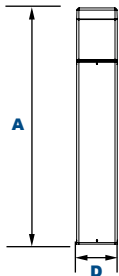
IES Type V Glass
AF33XBOSFG3Q &
AF33XBOSFG5Q



LED Cone Reflector
AF33XBOSFRLQ



Square Louvers
AF33XBOSFSLQ



Dimensions

Length (D)	7" (177mm)
Height (A)	41 3/8" (1,051mm)

Order Information Example:

AF33XBOSFRLQF1X15UAMZ36SF

	F	1X15	U	AM			
Model	Optics	Wattage	Driver	CCT	Color	Height	Options
AF33XBOSFG3Q =Square Flat Bollard with IES Type III Glass	F =Wide Beam Spread	1X15 =15w	U =120-277V	AM =Amber	Z =Bronze B =Black C =Custom (Consult Factory)	(Leave Blank) =42" Standard Height 36 =36" Height 30 =30" Height	SF =Single Fuse DF =Double Fuse SP =Surge Protection GF1 =GFCI Outlet, 15A, 120V BU =Battery Backup, 90 Minutes
AF33XBOSFG5Q =Square Flat Bollard with IES Type V Glass							
AF33XBOSFRLQ =Square Flat Bollard with LED Cone Reflector							
AF33XBOSFSLQ =Square Flat Bollard with Square Louvers							

Project Information:

Project Name: _____ Fixture Type: _____

Complete Catalog #: _____ Date: _____

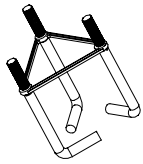
Comments: _____

Certification & Listings:

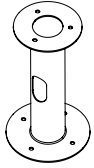


L70
25°C **147,000 Hours**

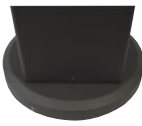
Accessories & Replacement Parts:



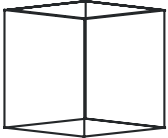
BOLAN



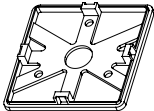
BOLRM



BREBASE*



BOLPCS



BOSEBASE

*Shown Mounted

Mounting Accessories (Order Separately, Field Installed)

AF33XBOLAN4 Mounting Kit, Includes Bracket & Three (3) 4" AnchorBolts

AF33XBOLAN8 Mounting Kit, Includes Bracket & Three (3) 8" AnchorBolts

AF33XBOLAN12 Mounting Kit, Includes Bracket & Three (3) 12" AnchorBolts

AF33XBOLAN15 Mounting Kit, Includes Bracket & Three (3) 15" AnchorBolts

AF33XBOLRM Root Mount Kit

AF33XBREBASE* Bollard Retrofit Base Kit Adapts New Bollards to Most Existing Bolt Patterns. Fits all LEPG Bollards. Die Cast with Powdercoat Finish, Hardware

Included: 1 1/2" Dia. x 1 1/2" H
*Specify Color: Z=Bronze, B=Black, C=Custom (Consult Factory)

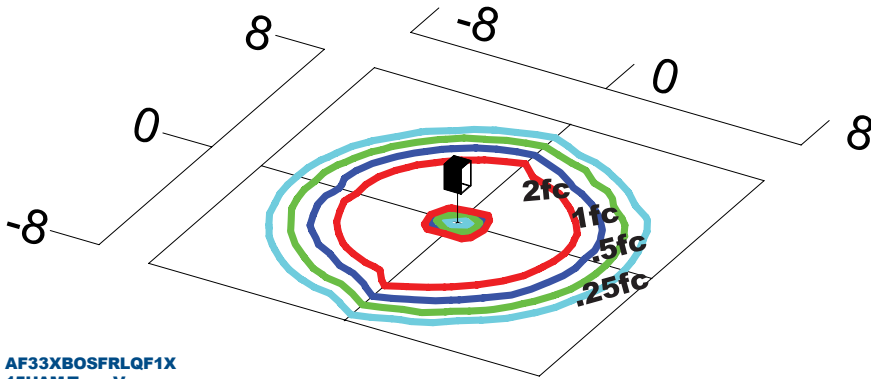
Replacement Parts (Order Separately, Field Installed)

AF33XBOLPCS Replacement Square Polycarbonate Vandal-Resistant Lens

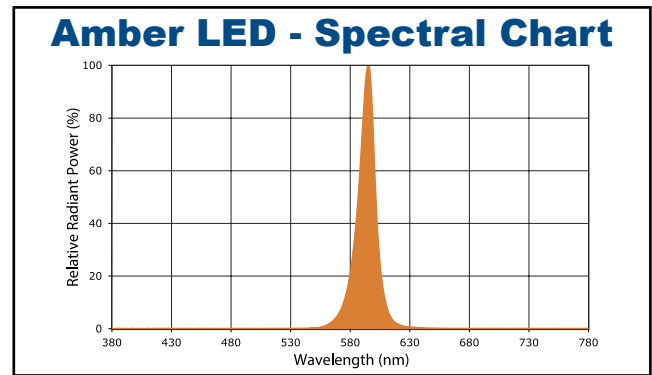
AF33XBOSBASE* Die Cast Base Plate with Powdercoat Finish Over a Chromate Conversion Coating.

*Specify Color: Z=Bronze, B=Black

Photometric Data



AF33XBOSFRLQF1X
15UAM Type V
Grid in feet, Mounting Height = 3.5 ft.



Photometric Performance

LED Board Watts	Drive Current (mA)	Input Watts	Optics	Amber LEDs				
				Lumens	LPW	B	U	G
LED 15w	116	17	AF33XBOSFG3 Type III Glass	277	16	0	2	0
			AF33XBOSFG5 Type V Glass	270	16	0	2	0
			AF33XBOSFL Louvers	187	11	0	1	0
			AF33XBOSFRL Cone Reflector	360	21	0	2	0

Projected Lumen Maintenance

Data shown for Amber LEDs			Compare to MH			
TM-21-11	Input Watts	Initial	25,000 Hrs	50,000 Hrs	100,000 Hrs	Calculated L70@ 25°C
L70 Lumen Maintenance @ 25°C / 77°F	17	1.00	0.95	0.90	0.80	147,000
TM-21-11	Input Watts	Initial	25,000 Hrs	50,000 Hrs	100,000 Hrs	Calculated L70@ 50°C
L70 Lumen Maintenance @ 50°C / 122°F	17	1.00	0.89	0.78	0.55	67,000
TM-21-11	Input Watts	Initial	25,000 Hrs	50,000 Hrs	100,000 Hrs	Calculated L80@ 40°C
L80 Lumen Maintenance @ 40°C / 104°F	17	1.00	0.92	0.85	0.70	66,000

NOTES:
1. Projected per IESNA TM-21-11. Data references the extrapolated performance projections for the 116mA base model in a 25°C ambient, based on 10,000 hours of LED testing per IESNA LM-80-08.
2. Compare to MH box indicates suggested Light Loss Factor (LLF) to be used when comparing to Metal Halide (MH) systems.