

CONO 26 Round Flat Top Bollard Light, 4000 Kelvin, 120-277v



SKU: AF38XMBL0126W27V40KD

Product Tags: [Bollard](#), [LED](#)

Product Page:

<https://www.accessfixtures.com/p/cono-26-round-flat-top-bollard-light-120-277v/>

Product Description

CONO 26 Round Flat Top Bollard Light, 120-277v is an all-purpose LED commercial bollard light.

Efficient Construction: LEDs are mounted facing down and reflector delivers light where it is needed and wanted.

Frosted Lens: Frosted polycarbonate lens reduces and eliminates glare.

Far-Reaching Optics: This bollard light distributes 1 footcandle up to 9 feet away.

Features

26 system watts

- L70 @ 50,000 hours - UL, CuL, DLC listed - 80+ CRI - Bronze powdercoat finish - Die-cast aluminum housing - Over 115 lumens per watt - Polycarbonate diffuser lens - 0-10v dimmable - 4000K - 3,000 lumens

All mounting hardware including anchor bolts included

- 42" tall - 5.5" diameter Access Fixtures Warranty

Access Fixtures is proud to assemble high quality, long lasting lighting products which are covered by a 5-year warranty. In accordance with our warranty policy, we will offer repair, replacement, or refund for qualifying claims. Please contact our friendly customer service team, located in Worcester, MA, to address any questions or concerns you may have. We can be reached at 800-468-9925 Monday-Friday 9-5 EST or via email at sales@accessfixtures.com. Click here to view Access Fixtures' [complete warranty policy](#). Need a Photometric Analysis for Your CONO 26 Round Flat Top Bollard Light, 120-277v Project?

A photometric analysis creates a computer simulation of a particular project. No matter what you are lighting, a photometric analysis is an easy way to quantify light levels before purchasing. When a report is generated, a lighting specialist will walk you through it so you know exactly what you will be receiving. Photometrics include average and minimum footcandles, uniformity ratios, spacing, light trespass info, and more. Plus, the cost of the study is refunded back to you when you purchase the fixtures. Call us at 800-468-9925 for more information about ordering a photometric analysis for your project.

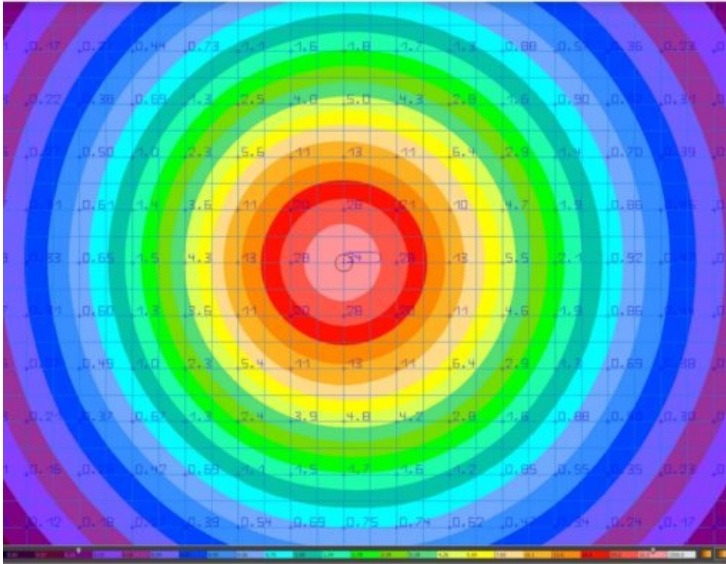
Ready to Order CONO 26 Round Flat Top Bollard Light, 120-277v or Speak to a Lighting Specialist?

You can place your order online, here. Or, if you want additional information, give us a call at 800-468-9925. Does your project require multiple fixtures? Ask us about quantity discounts. Our team of friendly expert lighting specialists are available to provide what you need to purchase fixtures and illuminate your project with confidence.

Product Attributes

- Dimensions: 45 × 11 × 11 in
- Weight: 25 lbs
- Availability: Typically ships in 2-4 weeks
- Light Source: 4000K - Cool White
- Available Finishes: Bronze
- Housing: Die cast aluminum housing
- Lens: Frosted polycarbonate lens
- Light Source Included: LED Array Included
- Light Source Lumens: 3,000
- Listings: CuL Listed, DLC Listed, UL Listed
- Mounting: Mounting kit with anchor bolts Included.
- Rated Life: 50,000+ Hours
- Size: 5.5"
- Style: Round Flat Top
- System Watts: 26
- System Watts Filter: 20w - 49w
- Voltage: 120-277v
- Warranty: 5-Year Limited Warranty

Product Gallery



CONO 26 Round Flat Top Bollard
1fc up to 9' away



