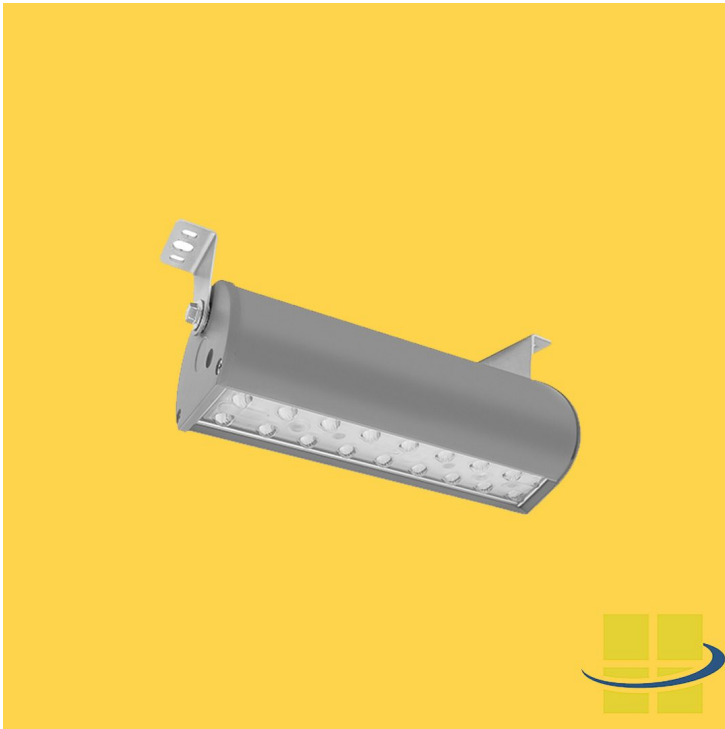


EPTA 40w 590nm Amber LED Linear Lights, Turtle-Safe, EXTREME-LIFE



SKU: AF88XLEC40L-AMB

Product Tags: [LED](#), [Linear LED](#), [Turtle-Friendly](#), [Wildlife-Friendly](#)

Product Page:

<https://www.accessfixtures.com/p/epta-40w-590nm-amber-led-linear-lights-extreme-life/>

Product Description

EPTA 40w 590nm Amber LED Linear Lighting Features:

- 3.5 lbs - 11.30L x 4.53W x 5.12H - 590nm Amber (wildlife and turtle friendly)

100-277VAC 50/60Hz

- Nominal power 40W-160W - 700 mA - Modular system - each fixture can be linked together. Contact for more info - Marine grade finish - all exposed metal is 304 stainless steel meaning all fixtures can be installed at sea-side projects

Surface-mounted, knuckle mount or suspended

- End brackets, full brackets, wire pendant, or knuckle mount mounting -
- Operating temperature: -40°C~+50°C - T1S, T5M, T5W, T40D, T60D, T90D
- optics - Black or Gray color options - Finished in durable powder coat paint -
- Corrosion-resistant polyester powder painted 100µm thickness - Meets
- 1000-hour salt spray certification - L70 @ 200,000 hours - DLC, IP66 rated,
- IK08 rated, CUL, CE, CB, SAA, RoHS, TUV rated EPTA 40w 590nm Amber

LED Linear Lighting Options:

- 1-10v dimming - 347-480v - Microwave motion sensor - Photocell MINI - 3', 6',
- 12', 18' power cord - Back light shield Access Fixtures Warranty

Access Fixtures is proud to assemble high quality, long lasting lighting products which are covered by a 5-year warranty. In accordance with our warranty policy, we will offer repair, replacement, or refund for qualifying claims. Please contact our friendly customer service team, located in Worcester, MA, to address any questions or concerns you may have. We can be reached at 800-468-9925 Monday-Friday 9-5 EST or via email at sales@accessfixtures.com. Click [here](#) to view Access Fixtures' [complete warranty policy](#). Need a Photometric Analysis for Your EPTA 590nm Amber LED Linear Lighting Project?

A photometric analysis creates a computer simulation of a particular project. No matter what you are lighting, a photometric analysis is an easy way to quantify light levels before purchasing. When a report is generated, a lighting specialist will walk you through it so you know exactly what you will be receiving. Photometric studies include average and minimum footcandles, uniformity ratios, spacing, light trespass info, and more. Plus, the cost of the study is refunded back to you when you purchase the fixtures. Call us at 800-468-9925 for more information about ordering a photometric analysis for your project.

Ready to Order or Speak to a Lighting Specialist?

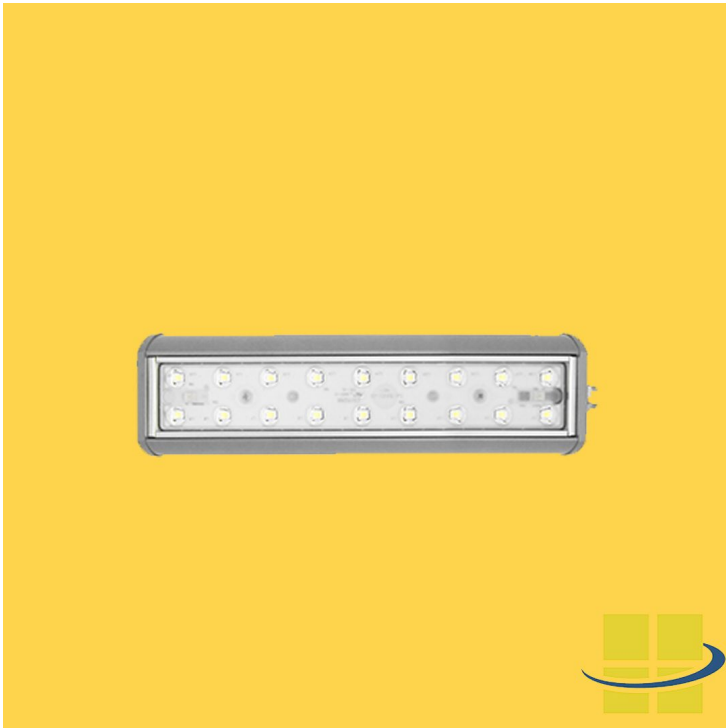
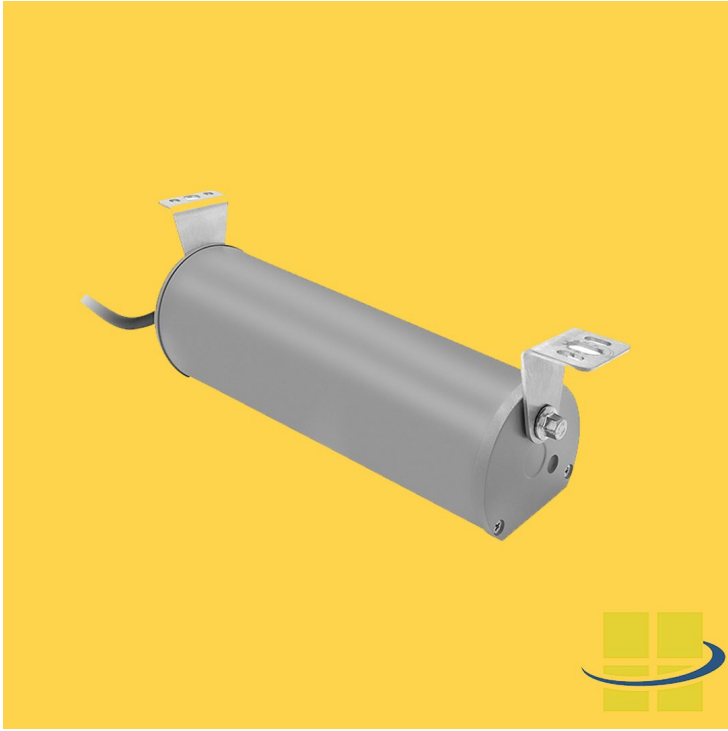
You can place your order online, [here](#). Or, if you want additional information, give us a call at 800-468-9925. Does your project require multiple fixtures? Ask us about quantity discounts. Our team of friendly expert lighting specialists are available to provide what you need to purchase fixtures and illuminate your project with

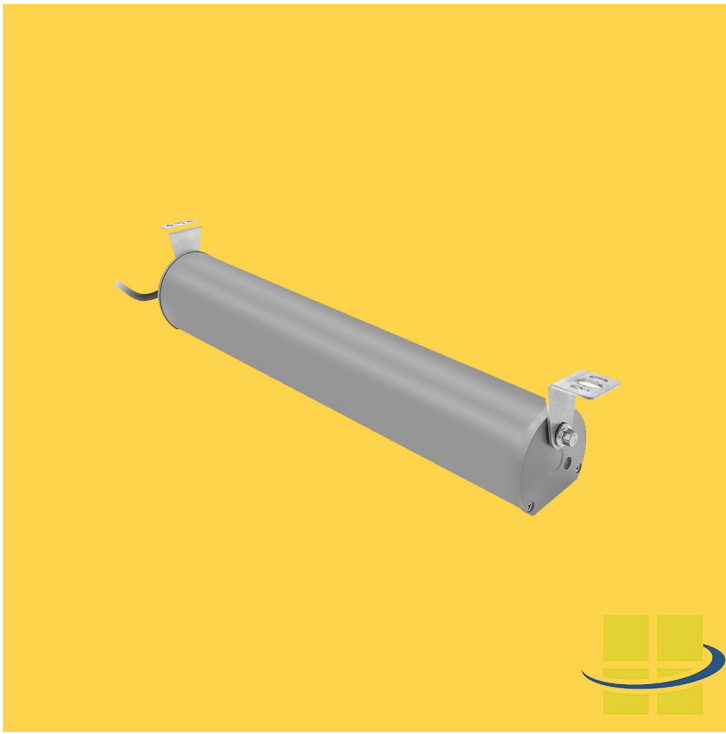
confidence.

Product Attributes

- Dimensions: 15.94 × 4.53 × 5.12 in
- Weight: 4.6 lbs
- Application: Linear Light Fixtures, Turtle Friendly 590nm, Wildlife Friendly 590nm
- Availability: Typically ships in 3-4 weeks
- Light Source: 590nm Amber
- Available Finishes: Black, Gray
- Housing: Extruded aluminum housing
- Light Source Included: LED Array Included
- Listings: IP66, RoHS Compliant, CB, CE, CuL Listed, DLC Listed, IK08, SAA
- Mounting: Knuckle Mount, Surface Mount, Suspension Mounting
- Product Family: EPTA
- Rated Life: L70 @ up to 200,000 Hours
- Style: Linear
- System Watts: 40w
- Voltage: 120v, 208v, 240v, 277v, 347v, 480v
- Warranty: 5-Year Limited Warranty

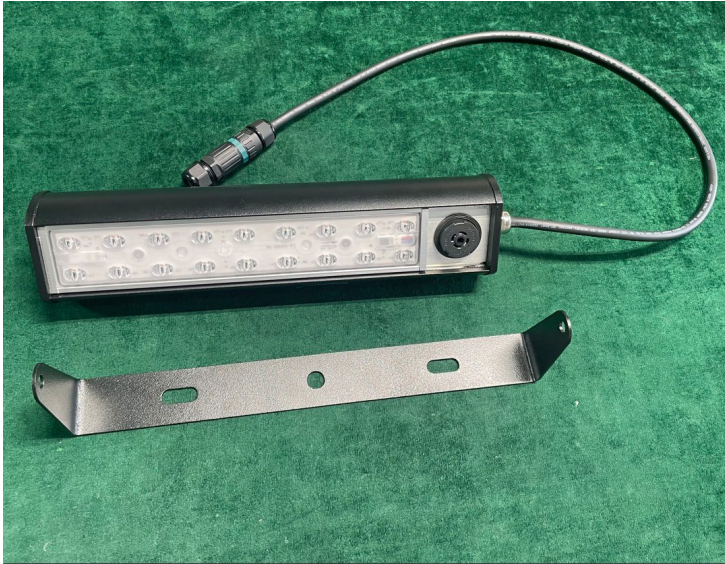
Product Gallery











EPTA LED Linear Light Fixture with Quick Connect Wires for Linking Shown with Bracket Mount



EPTA Linear LED Light Fixture with Knuckle Mount



