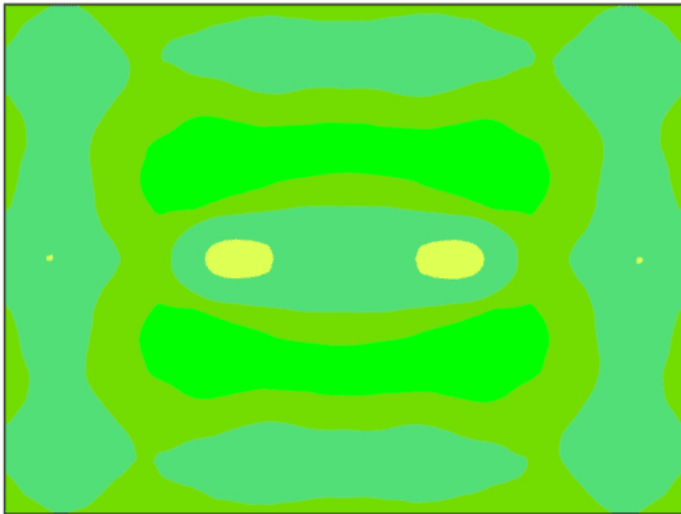


Outdoor Riding Arena LED Lighting 150'x200', Avg 20fc, 30' Pole



SKU: ARENA150X200AF72XAF33XFLE750FLE900-10POLES-20FC

Product Tags: [Arena](#)

Product Page:

<https://www.accessfixtures.com/p/outdoor-riding-arena-led-lighting-150x200-avg-20fc-30-pole/>

Product Description

This Access Fixtures 150'x200' Outdoor Riding Arena LED lighting package comes complete with (10) 30' poles, plus (12) sports lights: (2) APTI 750 and (10) APTI 900. This outdoor riding arena package produces 10,778 watts, avg. 20fc, and 1.84 max/min uniformity ratio. This is a simple and cost-effective illumination system to get you riding immediately. The extreme life of 200,000+ hours L70 rating

translates to virtually maintenance-free usage. Minimized energy and low to no maintenance results in the perfect mixture of performance, efficiency, and sustainability.

Precision Design for Optimal Light Levels

This horse riding arena package is designed for a 150'x200' area. This layout provides 20 average footcandles and a max/min (uniformity) ratio of 1.84 - which assures a brightly illuminated arena with no shadows or glare.

Reliable Energy-Efficient LED Outdoor Arena Fixture

This **150'x200' Outdoor Riding Arena** LED lighting package includes (12) weatherproof, energy-efficient LED extreme-life sports lights - (2) APTI 750 and (10) APTI 900 and all required mounting components. The modular construction features interchangeable components that are all but indestructible. If however, repair were needed, modules can be replaced individually. Boasting a total of 1,455,300 light source lumens, this package reduces energy cost by at least 50% when compared to old-fashioned incandescent or pulse start-metal halide. View [Horse Arena & Equestrian Arena Lighting](#) for more information

Luminaires: APTI 750, APTI 900 LED Sport Lights with Slip Fitter Mounts

Number of Luminaires: 12

Total Light Source Lumens: 1,455,300

Fixture Wattage: 769w, 924w

Rated Life (L70): 200,000+ Hours

Optics: Type 5 wide beam spread

Weights: 60.32 and 65.92 lbs each

Fixture Dimensions: 41.93" x 24.98" x 2.76" and 46.65" x 24.98" x 2.76"

Housing: Die-cast aluminum housing with corrosion-resistant polyester powdercoat. Finish meets 1,000-hour salt-spray certification per ASTM B117/ISO 9227:2012. Modular LED design with IP67 rating

Listings: IP67, UL Listed, CuL Listed, RoHS, ENEC, CB, IK08

Dimming: 0-10v dimming included in all fixtures

Voltage Compatibility: 120v-277v

Warranty: 5-Year Warranty

Assembled: United States

Ultra-Strength 30' Square Steel Poles

The straight square steel pole used in this package ships complete with a mounting template, base plates, anchor bolts, and base covers. If your horse arena is located in a high wind area such as Florida, Georgia, the Carolina's, Louisiana, and the Caribbean, or in other coastal areas - ask us about EPA (Effective Projected Area) wind ratings and wind tolerances. Installations in these areas may require heavier poles or alternative designs. Our engineers can provide data and pole recommendations for any location.

Number of Poles: 10

Pole Height: 30'

Shaft Size: 5" x 7" square

Gauge: 7-Gauge

Installation: Anchor-Based

Number of Anchor Bolts: 4 per pole

Base Plate Dimensions: 11" x 1"

Base Plate Anchor Bolt Circle: 10.6"-12" diameter steel

Anchor Bolt Dimensions: M22 x 33"

Tenon: 2 3/8" Tenon

Finish: Baked-on, textured, architectural bronze finish

Base Cover: Square 11.25" x 11.25" x 5" 2-piece steel base cover

Hand Hole: Cast-iron-reinforced hand hole with cover

Specifications: Conforms to ASTM-A 500 Grade B. Minimum yield strength of 46,000 PSI.

Secure Mounting

This package mounts (12) fixtures with 2 3/8 vertical tenons onto (2) double bullhorn mounts and (10) 30 foot poles. For more information about the fixtures, mounts, or the poles in this package, call **800-468-9925** or email **customerservice@accessfixtures.com**.

Prompt Delivery of Your Arena Lighting Package

Arena LED Lighting packages typically ship in 2-4 weeks. We ship your poles from the Access Fixtures production facility location closest to you. Stock does fluctuate, so call **800-468-9925** for an exact lead time.

Access Fixtures Arena Lighting Provides Exactly What You Need

Access Fixtures high performance lighting specialists use the most advanced photometric software to ensure you get the perfect arena lighting. As the premier expert in arena lighting, Access Fixtures has designed arena lighting for dressage, outdoor & indoor arenas, polo arenas, as well as home arenas across the US and the Caribbean. Few arenas have identical needs. Some regions have local ordinances regulating light trespass, glare, and light pollution. Packages for coastal regions benefit from custom adaptations to compensate for wind, salt spray, and other local weather conditions. If you have any questions, our knowledgeable high performance lighting specialists in Worcester, MA are available to walk you through your arena LED lighting project. Call us today at **800-468-9925** to discuss your project. You can also email us at **customerservice@accessfixtures.com**.

Access Fixtures Warranty

Access Fixtures is proud to assemble high quality, long lasting lighting products which are covered by a 5-year warranty. In accordance with our warranty policy, we will offer repair, replacement, or refund for qualifying claims. Please contact our friendly customer service team, located in Worcester, MA, to address any questions or concerns you may have. We can be reached at 800-468-9925 Monday-Friday 9-5 EST or via email at sales@accessfixtures.com. Click here to view Access Fixtures' [complete warranty policy](#). Ready to Order Outdoor Riding Arena LED Lighting 150'x200', Avg 20fc, 30' Pole?

You can place your order online here. Or, if you want additional information, give us a call at **800-468-9925**. Our team of friendly, expert high performance lighting specialists are available to provide what you need to purchase fixtures and illuminate your project with confidence.

Product Attributes

- Dimensions: 150 × 200 × 30 in
- Weight: 100 lbs
- Application: Arena Lighting
- Availability: Typically ships in 6-8 weeks.
- Available Finishes: Bronze
- Average Footcandles: 20
- Ballast/Driver: 700mA Driver
- Color Rendering Index (CRI): 70+, 80+, 90+
- Components: Bullhorn, Pole, Slip Fitter Mount, Sports Luminaire
- Housing: Die-cast aluminum housing with corrosion-resistant polyester powder. Finish meets 1,000-hour salt-spray certification per ASTM B117/ISO 9227:2012. Modular LED design with IP67 rating.
- Indoor/Outdoor: Outdoor
- Light Source Included: LED Array Included
- Listings: IP67, CB, CuL Listed, ENEC, IK08, RoHS, UL Listed
- Max/Min Uniformity: 1.84
- Mounting: Slip Fitter, Slip Fitter on Double Bullhorn
- Number of Fixtures: 12
- Number of Poles: 10
- Pole Height: 30 Feet
- Product Family: APTI
- Rated Life: 200,000+ Hours
- Warranty: 5-Year Limited Warranty
- Light Source: 3000K - Neutral White, 4000K - Cool White, 5000K - Bright White
- Voltage: 120-277v

Product Gallery

