

APZA 40 590nm Amber LED Turtle Friendly Post Top Light



SKU: AF88XBAC40-S-L

Product Tags: [Dark Sky Friendly](#), [LED](#), [LED Amber](#), [Post Top Lights](#), [Turtle-Friendly](#), [Wildlife-Friendly](#)

Product Page:

<https://www.accessfixtures.com/p/apza-40-590nm-amber-led-post-top-light/>

Product Description

APZA 590nm Amber LED Post Top Light Notes:

- APZA LED post top lights will vary from images provided based on wattage -
- APZA LED post top light dimensions are provided in the attached product pdf

APZA 590nm Amber LED Post Top Light Features:

- Die-cast aluminum housing - IP66 wet location rated - 10KA Surge protection standard - CSA listed - Operating temperature -40°C to +50°C, -40°F to 122°C -
- 1-10v Dimming - 5-Year limited warranty APZA 590nm Amber LED Post

Top Light Selections:

- Select Finish - bronze, black, white, or gray - Select Mount - 2 3/8" or 2 7/8" vertical tenon - Select Optics - Type I, Type III or Type V Diffuser Optics APZA

590nm Amber LED Post Top Light Options:

- Option - Backlight blockers - Option - RAL finishes available with MOQ - Option - Photocell - Option - Programable microwave occupancy/daylighting sensor - Option - Emergency power supply - Option - Works with DALI, PWM or DMX controls - Option - 10-Year limited warranty Access Fixtures Warranty

Access Fixtures is proud to assemble high quality, long lasting lighting products which are covered by a 5-year warranty. In accordance with our warranty policy, we will offer repair, replacement, or refund for qualifying claims. Please contact our friendly customer service team, located in Worcester, MA, to address any questions or concerns you may have. We can be reached at 800-468-9925 Monday-Friday 9-5 EST or via email at sales@accessfixtures.com. Click here to view Access Fixtures' [complete warranty policy](#). Need a Custom Photometric Analysis Project?

A photometric analysis is a custom computer simulation of your particular project. This service provides average footcandles at various heights, max/min (uniformity) ratios, minimum footcandles, light trespass levels, and more. For exacting lighting specifications, a photometric analysis helps you ensure light levels before making a big purchase. One of our lighting specialist will walk you through the process so you know exactly what you will be receiving. Call us at 800-468-9925 or customerservice@accessfixtures.com for more information about ordering a photometric analysis for your project.

Ready to Order or Speak to a Lighting Specialist?

You can place your order online or if you want additional information, give us a call at 800-468-9925.

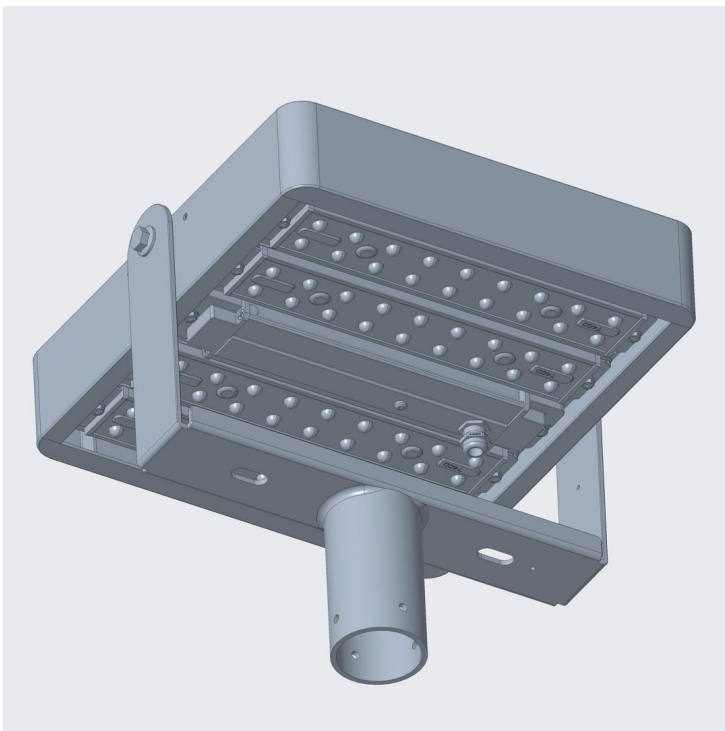
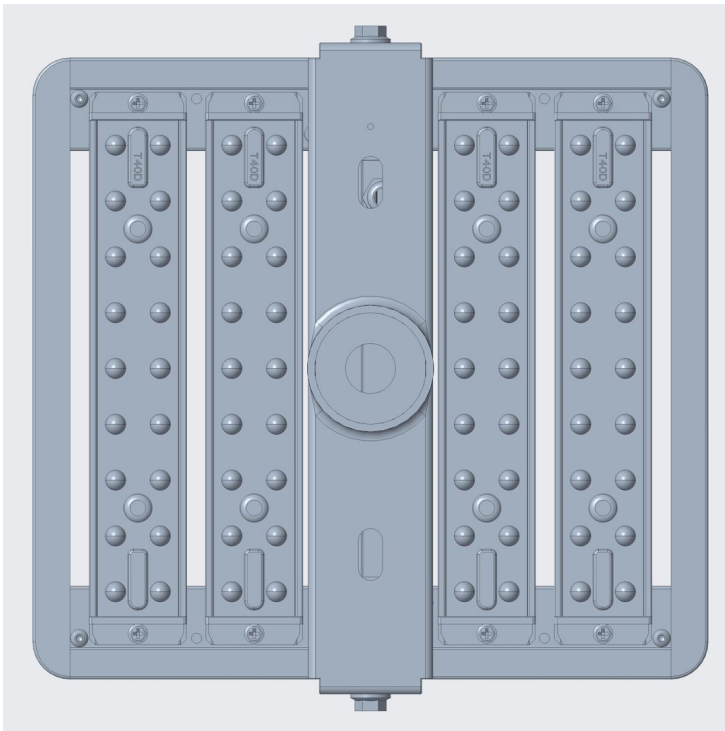
Does your project require multiple fixtures? Ask us about quantity discounts.

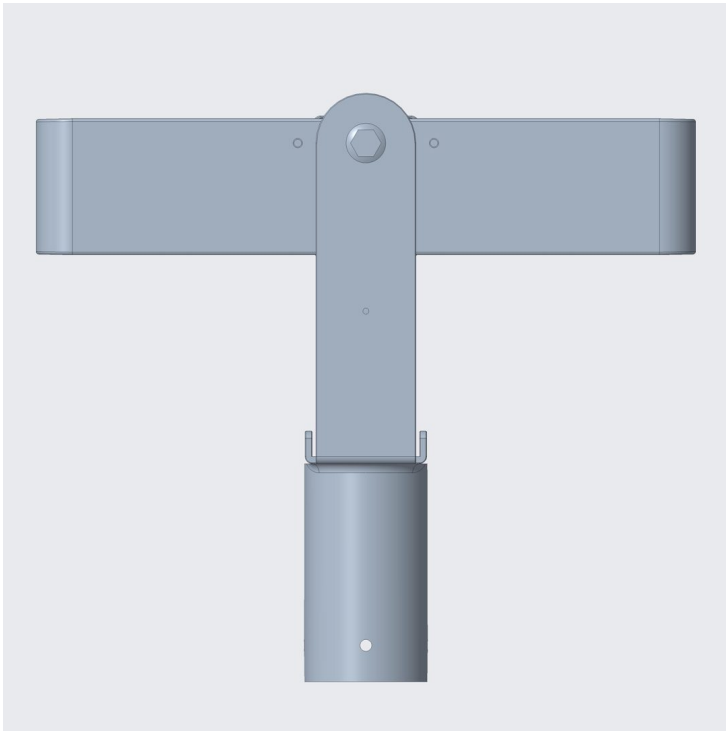
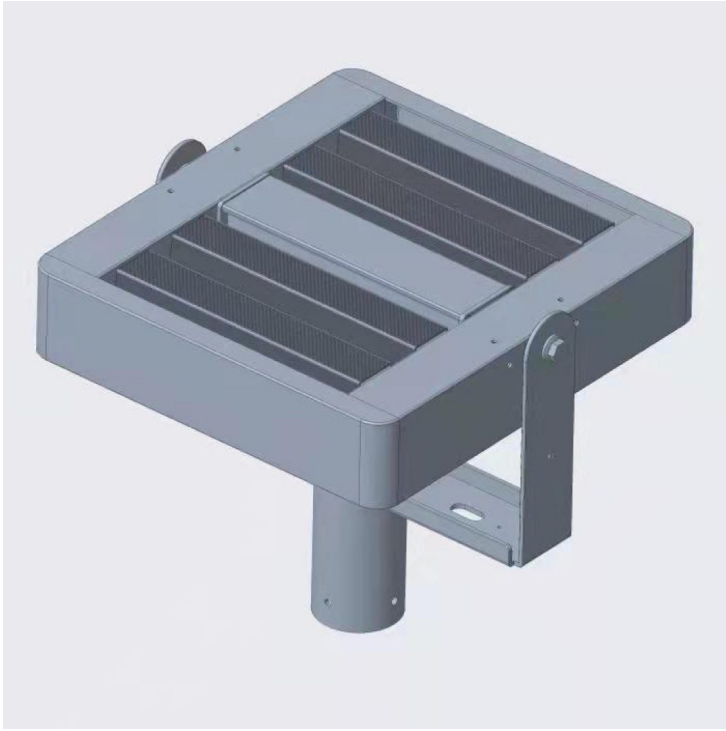
Product Attributes

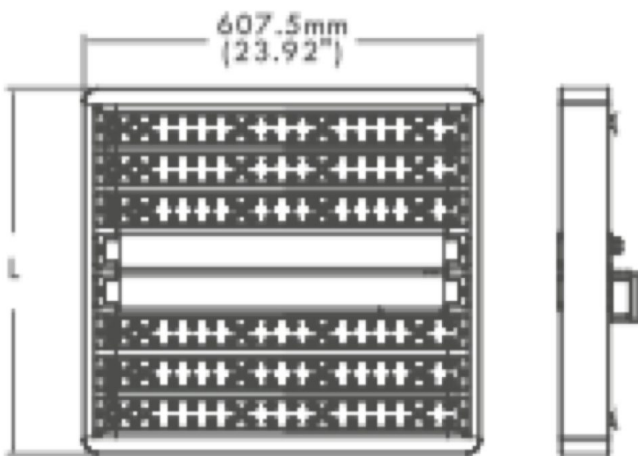
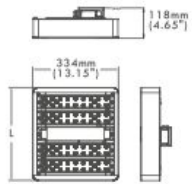
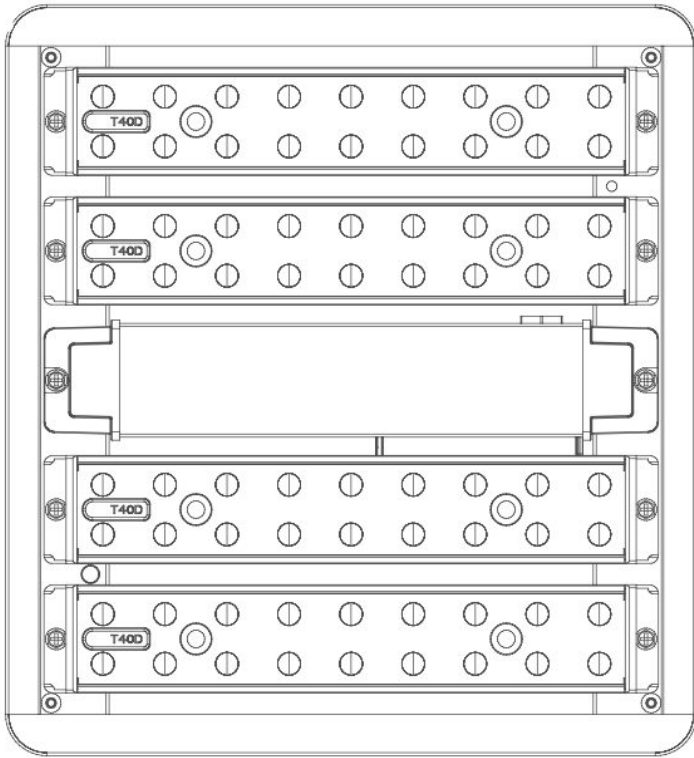
- Dimensions: 17 × 17 × 10 in
- Weight: 12 lbs
- Availability: Typically ships in 2-4 weeks
- Light Source: 590nm Amber
- Available Finishes: Black, Bronze, Gray, White, Custom RAL
- Housing: Built-in heat sinks, Extruded aluminum housing
- Lens: Polycarbonate
- Light Source Included: LED Array Included
- Light Source Lumens: 3,400
- Listings: IP67, ASTM B117/ISO 9227:2012, CE, CSA: Listed for wet locations, FCC Listed, IK08, SAA
- Mounting: Mounts on 2 3/8" Verticle Tenon, Mounts on 7 7/8" Verticle Tenon
- Product Family: APZA
- Rated Life: 66,000 Hours
- System Watts: 40
- Voltage: 120v, 208v, 240v, 277v
- Warranty: 5-Year Limited Warranty, Optional 10-Year Limited Warranty

Product Gallery









Product data have been exported from - [Access Fixtures](#)
Export date: Thu Jun 1 1:32:36 2023 / +0000 GMT