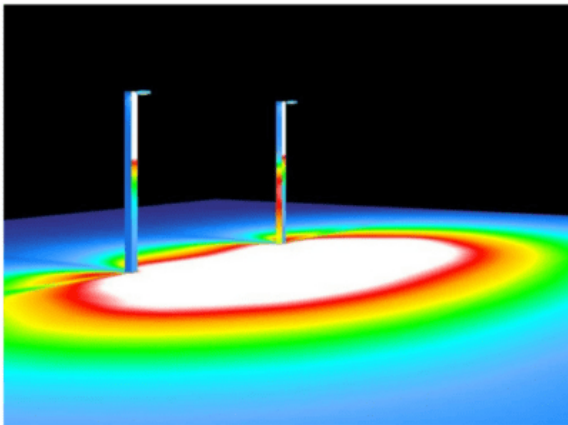


## Bocce LED Lighting with 2 Poles - 3 Courts 12' x 62' - 10 fc 2.00 max/min



**SKU:** AF72XBOC12x621FLB280L2P202-FC11-1

**Product Tags:** [Bocce](#)

**Product Page:**

<https://www.accessfixtures.com/p/bocce-led-lighting-with-2-poles-3-courts-12-x-62-10-fc-2-00-max-min/>

### Product Description

The Bocce LED Lighting with 2 Poles - 3 Courts 12' x 62' - 10 fc 2.00 max/min is a bocce court lighting solution for homeowners and recreational facilities.

**Extreme Life:** This bocce court lighting package is L70 rated at over 200,000 hours.

**Dark Sky Compliant:** This package is dark sky compliant in 2200K or 3000K and

full cutoff style.

**Choice of Finish:** APTA fixtures are available in bronze, white, black, or gray.

APTA Features:

**Luminaires:** 2) APTA 280 LED Sport Lights with Slip Fitter Mounts

**Number of Luminaires:** 2

**Fixture Wattage:** 285

**Rated Life (L70):** 200,000+ Hours

**Optics:** T4M1

**Weights:** 27.51 lbs

**Fixture Dimensions:** 32.99" x 12.99" x 2.76"

**Housing:** Die-cast aluminum housing with corrosion-resistant polyester powdercoat. Finish meets 1,000-hour salt-spray certification per ASTM B117/ISO 9227:2012. Modular LED design with IP67 rating.

**Listings:** IP67, UL Listed, CuL Listed, RoHS, ENEC, CB, CB, IK08,

**Dimming:** 0-10v dimming included in all fixtures.

**Backlight Shield:** to minimize light trespass, Included

**Voltage Compatibility:** 120-277v

**Warranty:** 5-Year Warranty

**Surge Protection:** (optional)

Pole Features:

**Number of Poles:** 2

**Pole Height:** 20 feet

**Shaft Size:** 4" x 4" square

**Gauge:** 11-Gauge

**Installation:** Anchor-Based

**Number of Anchor Bolts:** 4 per pole

**Base Plate Dimensions:** 10.5 x 10.5" x .75" thickness

**Base Plate Anchor Bolt Circle:** 8"-11" diameter steel

**Anchor Bolt Dimensions:** M22 x 33"

**Tenon:** 2 3/8" Tenon

**Finish:** Baked-on, textured, architectural bronze finish.

**Base Cover:** Square 10.75" x 10.75" x 4" 2-piece steel base cover

**Hand Hole:** Cast-iron-reinforced hand hole with cover

**Specifications:** Conforms to ASTM-A 500 Grade B. Minimum yield strength of 46,000 PSI.

## Secure Mounting

This package mounts one fixture on each pole tenon with a secure slip fitter mount. For more information about the fixtures, mounts, or the poles in this package, call 800-468-9925 or send us an email at [customerservice@accessfixtures.com](mailto:customerservice@accessfixtures.com).

## Access Fixtures Warranty

Access Fixtures is proud to assemble high quality, long lasting lighting products which are covered by a 5-year warranty. In accordance with our warranty policy, we will offer repair, replacement, or refund for qualifying claims. Please contact our friendly customer service team, located in Worcester, MA, to address any questions or concerns you may have. We can be reached at 800-468-9925 Monday-Friday 9-5 EST or via email at [sales@accessfixtures.com](mailto:sales@accessfixtures.com). Click here to view Access Fixtures' [complete warranty policy](#). Ready to Order Bocce LED Lighting with 2 Poles - 3 Courts 12' x 62' - 10 fc 2.00 max/min?

You can place your order online here. Or, if you want additional information, give us a call at 800-468-9925. Our team of friendly expert lighting specialists is available to provide what you need to purchase fixtures and illuminate your project with confidence.

## Product Attributes

- Dimensions: 32.99 &times; 12.99 &times; 2.76 in
- Weight: 27.51 lbs
- Light Source: 3000K - Neutral White
- Availability: Typically ships in 6-8 weeks.
- Available Finishes: Black, Bronze, Gray, White
- Ballast/Driver: 700mA Driver

- Color Rendering Index (CRI): 70+, 80+, 90+
- Components: APTA Sports Light, Pole, Pole Base Cover
- Features: Sports Court Package
- Lens: Type 4 Medium
- Light Source Included: LED Array Included
- Listings: IP67, CB, CE, CUL, ENEC, ErP, IK08, LM79, RoHS, SAA, UL
- Mounting: Slip Fitter
- Product Family: APTA
- Rated Life: 200,000+ Hours
- Reflector: Optical Polycarbonate
- Sports Level of Play: Recreation
- Average Footcandles: 10
- Max/Min Uniformity: 2.00
- Number of Courts: 3
- Number of Fixtures: 2
- Number of Poles: 2
- Pole Height: 20 Feet
- System Watts Filter: 200w - 499w
- Vendor: AF33X, AF72X
- Warranty: 5-Year Limited Warranty
- Voltage: 120-277v

## Product Gallery

## Bocce LED Lighting

- 2) APTA 280
- 2) 20' Poles



## APTA 280 LED Slip Fitter Mount

